



# HOME EXPRESSIONS

## Get to those last minute chores before winter sets in

Don't batten down the hatches for winter yet - there's lots of work still to be done, inside and out.

Conifers  
✓ Plant now after carefully

preparing the site. This will ensure strong and healthy growth for many years.

hedges. Clumps of debris allow pests and diseases to lie dormant over winter before causing havoc next year.

### Geraniums

✓ While they can survive to the first frosts, prepare geraniums for winter now by moving them to a frost-free greenhouse or inside window sill. The latter should be sunny but not in a well-heated room. A lack of light will cause geraniums to drop their leaves.

Lawn  
✓ Clear fallen leaves.  
✓ Trim new grass back to two inches high.

### Plant Care

✓ All frost-prone plants should be brought inside.

Keep checking for mold or rot - the expression "one rotten apple..." applies to any stored produce.

✓ Bulbs, tubers and corms should be dried and stored.

✓ Complete plants can be overwintered in a greenhouse or anywhere frost cannot reach them.

### Repairs

✓ Make repairs to all garden fences, gates, brickwork and paths before winter sets in and creates additional damage.

### Tools

✓ Clean, oil and store all tools carefully and safely. Repair now rather than wait until needed.

### Harvesting

✓ Gather and store the last of your potato and carrot crops and keep picking apples and pears as they ripen. Never

store any produce when damp and always ensure that the storage area is well ventilated.

✓ Keep checking for mold or rot - the expression "one rotten apple..." applies to any stored produce.

### Hedges

✓ Clear the area beneath

## Invisible Fencing® PET CONTAINMENT Super Fall Sale



Call now and take advantage of our **Fall Special \$100. off "ICT50" & "ICT100" System Purchase** up to October 31, 1993. Not valid with any other promotions or discounts.



- Approved by 8 out of 10 Veterinarians in an independent survey
- Two Year Warranty
- 60 Day Money Back Guarantee

### Invisible Fencing creates a boundary your dog can't jump over or dig under

For over 20 years, more than 250,000 dogs and their owners have come to enjoy the many benefits of Invisible Fencing® Brand Pet Containment systems.

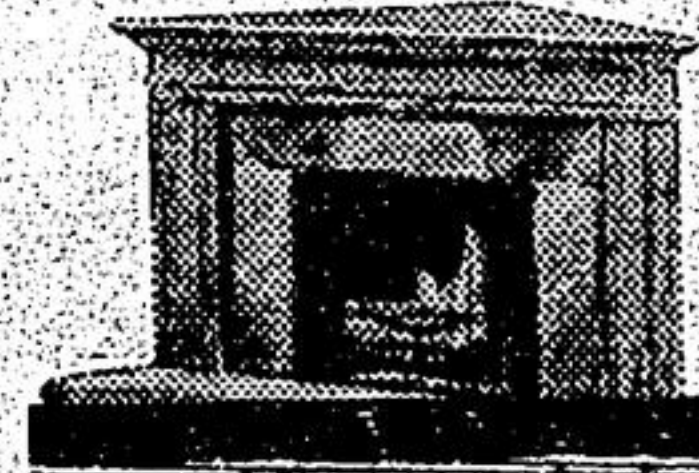
Here's How it Works: A thin antenna wire is buried underground along the boundaries you set, which sends a harmless radio signal to the receiver-collar your dog wears. Through a proven combination of conditioning and radio technology, your dog is trained to respect his boundaries.

## INVISIBLE FENCING of South Eastern Ontario

1-800-661-6286

Present this ad for \$100.00 OFF your purchase  
"See you at the Home Show"

## FIREPLACE MANTELS



for all decor (solid wood, stone like, marble)  
Custom Mantels & Art  
very reasonable  
478-8873

# Carpet & Drapery New Location

by **Patti-Lynn Interiors**

5402 Main St.,  
Stouffville (next to Angie's Eatery)

## OPENING SPECIALS

### \*CARPET - 3 for 1 Sale

Carpet, underpad, installation (min. 25 yds.)

### ONE LOW PRICE

### \*LEVOLOR BLINDS - up to 50% off

SAVE 15% ON

### \*DRAPERY & AREA RUGS

We'll pay the GST & PST

1-800-267-0063

640-0640

Mon. - Thurs. 9-6  
Fri. 9-9  
Sat. 9-6

## BILLIARDS DARTS & GAME TABLES

**BLACK BEAUTY**  
3/4" slate  
leather  
pockets  
**\$1399.00**

with accessories  
available in Pool or Snooker  
\*Now available in wood grain finish

**CLASSIC**  
leather  
pockets, solid  
oak turned  
legs & oak  
rails

4x8 - \$2495.00 pool/snooker  
4-1/2x9 - \$2795.00 pool/snooker  
with accessories

### NEW NORTH AMERICA'S #1 SELLING TABLE "OLHAUSEN"

12' Deluxe Oak Shuffle Board \$1599.00  
Brunswick Air Hockey (4'x6") \$ 699.00  
Econo Air Hockey (2'x4') \$ 179.00  
Cutec 2 pc. cues-fiberglass  
Reg. \$119.95 case incl. Sale \$ 89.95  
Belgian Aramith Pool or Snooker Balls \$ 89.95 set

Largest Dart, Flight & Shaft  
Selection North of Toronto

### BETZ POOLS LTD.

5688 MAIN STREET  
STOUFFVILLE 640-1424