

Thinking of **SELLING OR BUYING?**  
 16 years experience  
**June 477-0011**  
 Williamson  
 REMAX ALL STARS REALTY INC.

Stouffville Tribune

# Weekender

Auto Exclusion  
**Jaguar**  
 REPAIR SPECIALIST  
 172 BULLOCK DRIVE, UNIT 31  
 MARKHAM  
 471-8660

## Province to aid airport landers

TRACY KIBBLE  
 Staff Reporter

Residents in the rural community of Altona-Glasgow have gained provincial government support this week in an on-going battle to stop Ottawa

from selling excess Pickering Airport lands.

Three provincial MPPs joined forces in the legislature Thursday to squelch Ottawa's plan to sell 5,100 acres of land it no longer needs.

"The federal government has no conscience at all," announced Durham York MPP Larry O'Connor, who joined parliamentary assistant to the Minister of Agriculture, Paul Klopp and Huron MPP, Jim Wiseman in a private member's resolution Thursday.

"The (feds) haven't thought twice about throwing these people out into the cold — these people are seniors, single moms and disabled," O'Connor said.

The resolution calls on the

federal government to "stop this premature plan to dispose of surplus federal lands in the Pickering area until a comprehensive long-term strategy is developed."

During a legislative debate Thursday a resolution was passed to urge the feds to hold off on its plans to sell the land until a long-term strategy and consultation process with tenants, lower levels of government and environmental groups.

"Now we can work together for the good of the planning process and this resolution shows the importance of working with people" who are affected by this land sale, O'Connor said.

"As the senior government, Ottawa has a special responsibility to act in harmony with the wishes of provincial and local governments," a media release stated.

The MPPs insisted that if the government has waited this long to sell surplus land, it can wait until a visionary, comprehensive land use strategy is brought forward.

"We believe that if the lands the federal government owns are not going to be used for an airport, then another long-term solution should be found for their use," the release stated.

O'Connor and Wiseman have been working closely with affected residents and concerned community organiza-

tions. The government has supported their efforts to protect the tenants, the community, the agricultural land and the environmentally sensitive areas located on the 18,600 acres of land owned by the federal government.

"What's at risk here are people's livelihoods, their homes and their sense of belonging to a community," Klopp said.

The resolution to urge the federal government to stop the land sale passed in the legislature with full support of the government and the Liberal caucus.

"Right now tenants are on a 30-day notice. They can't even plan their Christmas dinner," O'Connor said.

### Waste days a success, town says

Close to 1,000 vehicles passed through Whitchurch-Stouffville's household hazard waste depot last month, town officials stated last week. Public works director Paul Whitehouse said 940 vehicles turned out at the three-day depot this year, which ran from Oct. 23-25 at the Recreation Complex. There were 301 vehicles on Thurs., Oct. 23; 272 vehicles on Fri., Oct. 24 and 367 vehicles on Sat., Oct. 25, Whitehouse said. The depot is one of nine stations set up across York each year — a \$1 million regional program where residents can safely dispose of and recycle household hazardous wastes such as old paints, thinners, medicines, cleaners, batteries and tires.

Last year, 781 local residents unloaded 12,960 gallons, or nearly 60,000 litres of wastes so the numbers are expected to be substantially higher this year. During last year's depot, Stouffville residents also turned over more than 1,100 car batteries and tires plus paint, motor oil and pesticides, gas cylinders, needles and syringes.

The final results of this year's depot will be available through York's environmental services department later this year.

—Tracy Kibble

## Citizens vent anger at candidates meeting

BRUCE STAPLEY  
 Correspondent

Pointed remarks, accusations of partisan questioning, and expressions of disgust from those in the capacity audience marked the occasion as six of the eight candidates for the fed-

eral riding of Markham-Whitchurch-Stouffville squared off at Parkview Village Tuesday night.

Candidates at the event, which was put on by the Whitchurch-Stouffville Chamber of Commerce, were grilled

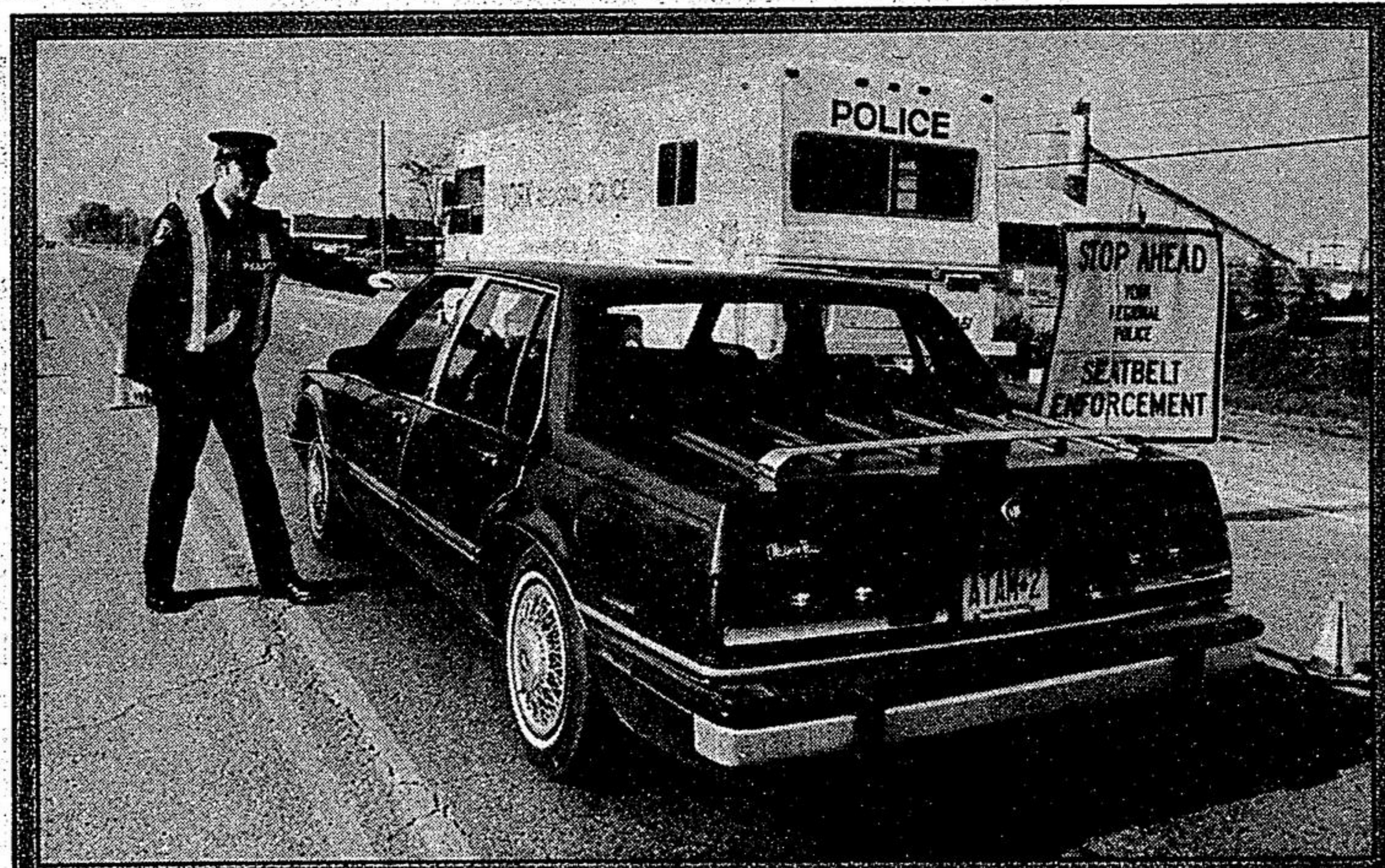
during a question and answer period. The frequent criticisms of each other by the candidates led Stuart Bellamy, a senior citizen in attendance, to interrupt moderator Jim Mason at one point. "Will you please ask the candidates to answer the questions instead of running all the other candidates down — it's disgusting!" said Bellamy to a cheering audience.



Incumbent Progressive Conservative MP Bill Attewell defended his party's economic platform, saying that free trade had created 200,000 jobs while contributing to a trade surplus of \$19 billion. He said the GST was playing a vital role in deficit reduction.

But Attewell took an aggressive stance on the Liberal job creation scheme, insisting the plan would end up costing the provinces and the municipalities. "The Liberals would spend \$6 billion on job creation. Four billion of that amount would come from the provinces and the municipalities, and we know they're broke," he said to a cheering audience. He added during the question session that the Liberals weren't tackling the deficit issue, and that he was afraid they would try to "spend their way" out of the current economic stall. "The (Ontario) NDP government tried that and failed," said

(Please see page 7)



### Seatbelt safety reminder

York Region police were on Main Street, Stouffville, enforcing seatbelt laws last night. Police officers were reminding residents of the importance of wearing seatbelts.

**MARKVILLE MAKES IT HAPPEN!**

|   |   |  |  |   |
|---|---|--|--|---|
| <p><b>BRAND NEW 1994 SABLE GS WGN</b> BEST PRICE <b>\$18,999</b></p> <p>OR LEASE FOR <b>\$379/mo.</b> 24 MONTHS</p> <p>INCLUDES: 3.8L V-6, A/C, P/W, P/L, cruise, buckets &amp; console &amp; more. (MSRP 28,286) Stk. #1197C</p> | <p><b>BRAND NEW 1994 EXPLORER SPORT 4X2</b> BEST PRICE <b>\$23,399</b></p> <p>OR LEASE FOR <b>\$399/mo.</b> 24 MONTHS</p> <p>INCLUDES: 4.0L V-6, A/C, P/W, P/L, cruise, aluminum wheels, trailer, low package &amp; limited rear slip axle. (MSRP 25,329) Stk. #1260T</p> | <p><b>BRAND NEW 1993 EXTENDED AEROSTAR 4 WD EDDIE BAUER</b> BEST PRICE <b>\$23,999</b></p> <p>OR LEASE FOR <b>\$399/mo.</b> 24 MONTHS</p> <p>INCLUDES: Quad captains chairs with leather, loaded, 1/1one, rear A/c &amp; more. (MSRP 28,286) Stk. #1206T</p> | <p><b>BRAND NEW 1993 VILLAGER LS</b> BEST PRICE <b>\$24,691</b></p> <p>OR LEASE FOR <b>\$429/mo.</b> 24 MONTHS</p> <p>INCLUDES: 976A Pkg., Quad seats, Rear A/C, alum. wheels, high level audio, p/seats &amp; much more. (MSRP 27,195) Stk. #1319</p> | <p><b>BRAND NEW 1994 LINCOLN CONTINENTAL</b> BEST PRICE <b>\$35,888</b></p> <p>OR LEASE FOR <b>\$599/mo.</b> 24 MONTHS</p> <p>INCLUDES: Leather buckets, moon roof, keyless entry, convenience group &amp; much more. Stk. #1102L</p> |
|---|---|--|--|---|

**NEW SERVICE HOURS**  
 Mon., Thurs., Fri. 7:30 a.m. - 5:30 p.m.  
 Tues., Wed. 7:30 a.m. - 8:30 p.m.

**4072 HWY. #7 MARKHAM 470-7044**  
 METRO'S NEWEST LINCOLN MERCURY DEALER NEVER KNOWINGLY UNDERSOLD. Tel: Line 798-7025