

Real Estate

Advertising Section - published twice weekly for the Markham Economist and Sun/Stouffville-Uxbridge Tribune, a division of Metroland Printing, Publishing and Distributing Ltd.



GEORGE MILLER FINANCIAL SERVICES INC.

9.99
10 years

MORTGAGE SAVINGS
\$\$\$\$\$\$

8.99
5 years

940-6007
(24 Hours)

MORTGAGE RENEWAL

No Cost Transfers

MALCOLM D'SOUZA

502-2267
(Toronto Line)

Call 24 hr. Rate Line for best rates

* Rates subject to change. Applicants to qualify



TOWN OF WHITCHURCH-STOUFFVILLE

TENDER FOR PURCHASE NO. WS-92-20

OFFERS FOR THE SALE OF PROPERTY

KNOWN AS PART LOT 2, PLAN 51

IN THE TOWN OF WHITCHURCH-STOUFFVILLE

(6 CHURCH STREET, STOUFFVILLE)

Sealed tenders, in the envelope provided, clearly marked as to contents, will be received by the Clerk's Department, Municipal Offices, 19 Civic Avenue, Stouffville, Ontario, L4A 7Z6, until:

WEDNESDAY, DECEMBER 23rd, 1992, 3:00 P.M., LOCAL TIME

for the sale of the property and frame house known as 6 Church Street, Stouffville, being the last house on west side of street adjacent to the Stouffville Lawn Bowling Centre Green and Club House.

*Building Size: approximately, 1640 square feet in total
820 square feet - ground floor
820 square feet - first floor
(plus basement crawl space of approximately 820 square feet)

*Lot Size: 40 feet by 82.5 feet, total lot area of 3,220 square feet

*Zoning: R2 Single Family Residential

*Conforming: considered legally conforming to By-law 87-34 for lot size

A certified cheque made payable to the Town of Whitchurch-Stouffville, in the amount of \$1,000.00 shall be submitted with the Tender. It will be returned in full without interest or deduction if the Tender is not accepted. The Tender deposit of the two highest Tenders shall be retained until a Tender has been formally accepted.

Tender documents may be obtained from the Clerk's Department, at the above-mentioned address, between 8:30 p.m. and 4:30 p.m., local time, Monday to Friday.

Any inquiries with regard to the Tender shall be directed to the Deputy Clerk, Miss Michele Skinner (416) 640-1900 or (416) 895-2423 and with regards to property to Mr. John Crawley (416) 640-6527.

The highest or any Tender need not necessarily be accepted by the Town of Whitchurch-Stouffville. A confidential minimum reserve bid for the property has been established by the Town and the Town reserves the right not to accept any Tender in an amount less than the reserve bid.

OLD MARKHAM - NEW HOMES



- Enclave of 9 Custom Crafted Homes
- Location 16th Avenue & Mintleaf Gate, Markham
- 3,039 sq. ft. - 3,282 sq. ft. - Lots up to 60' wide x 230' deep
- 5 Bedrooms, Nanny's Quarters, 3-1/2 Baths, Fabulous Kitchens
- Occupancy Summer 1993
- From \$319,900
- Built your way by Aviron Homes



For Brochure Package Call

Nancy Sears

Sales Representative

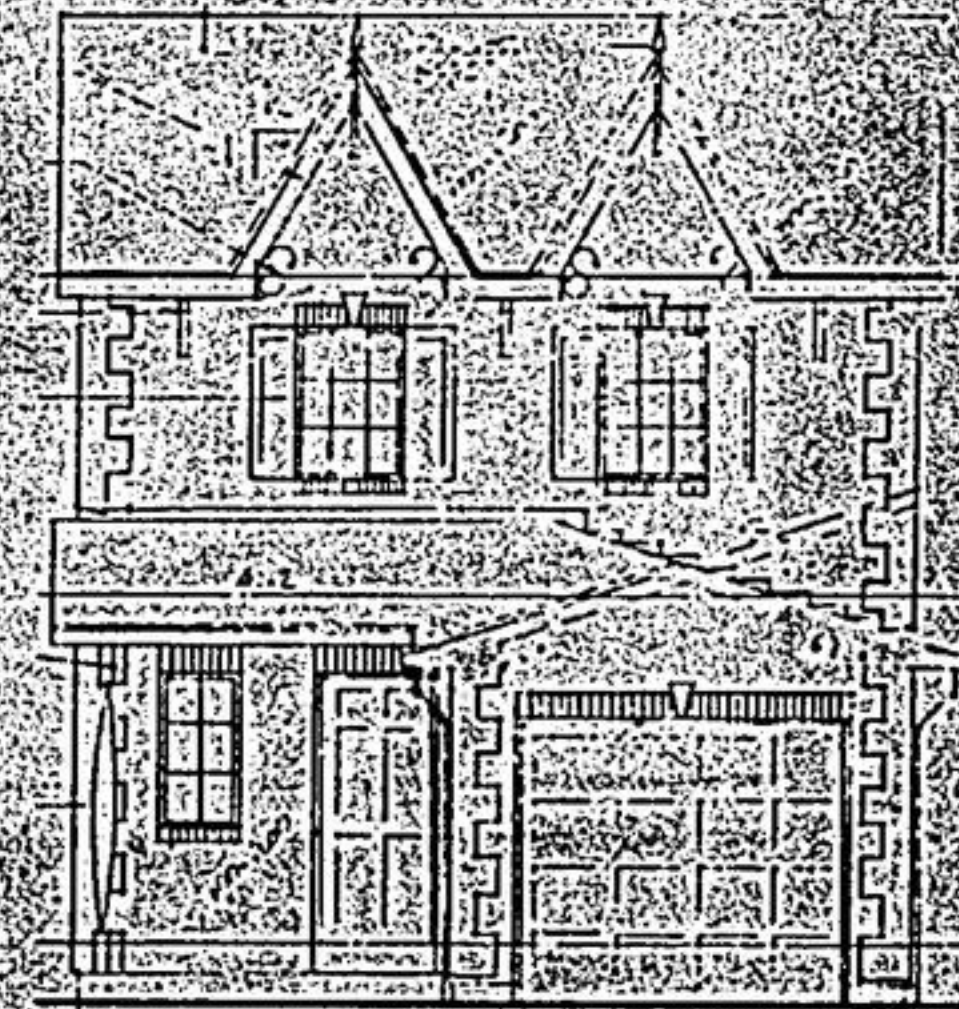
321-3536

Re/Max Genesis Ltd. Realtor



ONLY A FEW LEFT

from
\$149,900
In Historic Uxbridge



1485 sq. ft.

All Brick
Walk-out basements included.
Beautiful Mature Trees
Walking Distance to Main St.
Sports facilities, Hospitals, Schools & Shopping

Ivory Forest Homes
298-8823

IMC REAL ESTATE INC., REALTOR



2 GREAT CONDOS 2 RAYMERVILLE DRIVE

This superb 1202 sq. ft. 2 bdrm., 2 baths, penthouse suite has a terrific unobstructed south/west view from both the solarium & balcony. It includes 2 underground parking, appliances and a locker. Vendor will consider all offers.

\$184,900. With an unsurpassed view from the balcony of this 1124 sq. ft. 2 bedroom, 2 bath suite, you can see the budding of the morning sunrise. The master contains 4 pce. ensuite & spacious walk-in closet.

LAND - LAND - LAND

\$249,000 buys you tranquility on beautifully treed 5.5 acres. Build your dream home or retain existing small bungalow - tenant will stay. Prime acreage on Hwy. 48 will consider any offer.



UNIONVILLE BEAUTY WHAT A PRICE!

\$440,000. Fabulous executive all brick 4 bdrm. home on 50' x 121' uniquely landscaped lot in the Bridle Trail. Main flr. laundry, fam. and sunrm. with skylights. Spacious Hollywood Kit. leading to custom cedar deck. Over \$75,000 in extras and upgrades.

For the above properties please call

Dwight Davis, Sales Representative 696-9000 or 377-5290



Loretta Lavell
Sales Representative

UNIQUE & CHARMING!

Fabulous location in town Stouffville.
Cathedral ceiling, skylight, open concept,
8' cedar hedge. Complete privacy.

Just listed at: **\$208,000!!**

Loretta Lavell
Bus. 640-1200



474-1212 L 640-1200