

Real Estate

Advertising Section - published twice weekly for the Markham-Economist and Sun/Stouffville-Uxbridge Tribune, a division of Metroland Printing, Publishing and Distributing Ltd.

COLDWELL BANKER - EXPECT THE BEST COLDWELL BANKER - EXPECT THE BEST



LEE REAL ESTATE
A MEMBER OF THE SEARS FINANCIAL NETWORK
Expect the Best™ 473-2224
STOUFFVILLE 642-2224



Sherry Hayes
Sales Representative



**WAS \$269,000
NOW \$239,000**

Wonderful Century home, featuring wood floors, large country kitchen, stone fireplace with Elmira insert. Located in Claremont on a beautiful mature 2/3 of an acre.



THE SETTING

Slightly rolling 62 acres of land. Spring fed ponds, approx. 2.5 acres are groomed, balance is wooded. Serenity, security & splendor are being offered in the setting.

THE PLOT

An elaborate estate for entertaining. Life on this estate will be a pleasure, your guests will enjoy dining in the formal separate dining room, and after dinner, they may relax in the sunken living room while the children take a dip in the inground pool.

THE ENDING

This country estate property is being offered at only \$749,000 and may be yours by offering



**BACKS TO GOLF COURSE
APPROX. 1 ACRE
INLAW SUITE**

For you, first class is a way of life. For you there is the finest home elegant & distinctive. The main home features ceramics & hardwood floors, a grand circular staircase leads your way either upstairs or down to the partially finished basement. The master bedroom features a spacious ensuite with oversize jacuzzi and shower stall. The inlaw suite features a separate entry, kitchen, hardwood & ceramic floors and walkout to a balcony. Seeking the ultimate in a home, call now to arrange an appointment to view.



**LET REAL ESTATE
WORK FOR YOU**

- Location, location, location
- Approx. 5 acres of land
- Located on Major Mackenzie - Mkm.
- 330' frontage
- Includes a 3 bedroom home, small barn and a few greenhouse's
- Invest in this Lucky find at only \$399,000.

THIS HOME

THIS VIEW



**FOR ONLY
\$106,900!!**

- 1-4 pc. bathroom
- Large deck overlooks lake
- Located on Lakeshore Drive
- Eat-in kitchen
- Recently updated home
- In Whitchurch/Stouffville
- Livingroom & 1 bedroom

To view the above properties or for a free evaluation on your own property call Sherry Hayes, sales representative
Coldwell Banker Lee Real Estate

COLDWELL BANKER - EXPECT THE BEST COLDWELL BANKER - EXPECT THE BEST



RE/MAX
Scugog Realty Limited
an independent member broker

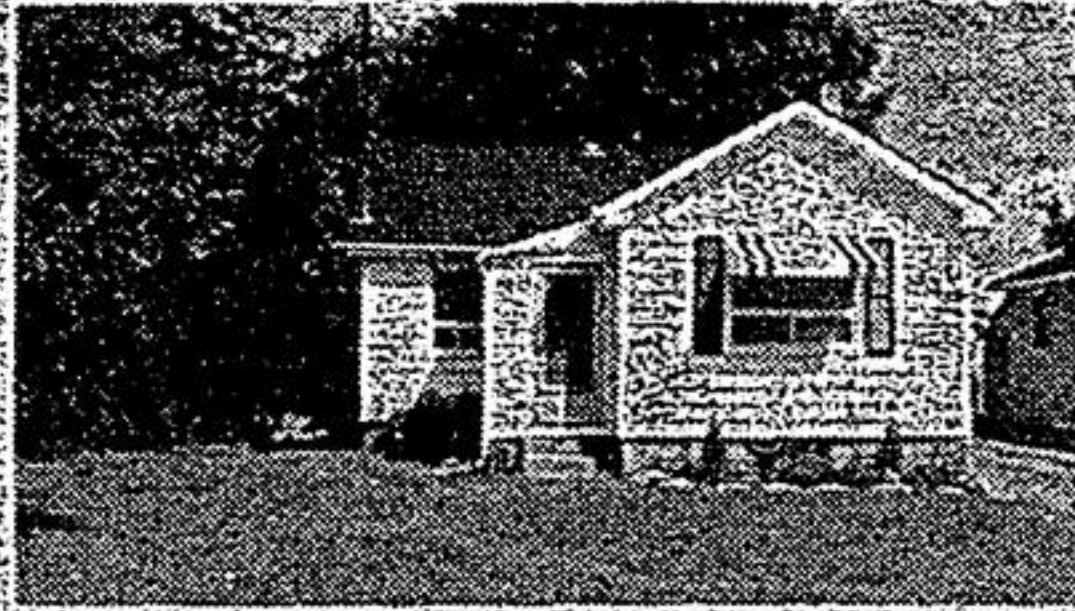
9 main street south, box 1298
uxbridge, ontario, L9P 1P7

852-6143

Tor. line, 510-1284



Lee Weldon
Associate Broker



**UXBRIDGE - \$144,900
COUNT THE PLUSES!**

Mature neighbourhood ✓ Close to school & hospital & bus stop ✓ Recent thermo windows ✓ 2 baths ✓ updated kit. ✓ wood floors in l.r. & d.r. ✓ Finished basement ✓ Lovely lot ✓



"WE DON'T LIST THESE EVERY DAY!"
N/E Ballantrae - 1 acre backing farm. BUILDER'S OWN BUNGALOW - 2300 sq. ft. mostly fin. lower level with w/o - 3 bdms - plus office - Fireplaces in l.r. & family room - 2-1/2 baths - Huge dining room - Recent deck, landscaping & circular paved drive! \$279,000.



**"POWER OF SALE - UXBRIDGE
\$172,900. MUST BE SOLD"**

3 bedroom backsplitt - 2-1/2 baths - Fenced rear yard - Hardwood floors - Fireplace & glass walk-out from family room. Just needs T.L.C!



UXBR. "WHEN THE LOT MEANS A LOT!"
Approx. 2400 sq. ft. 4 bedroom clay brick on gorgeous pool size lot. Wonderfully large kitchen with glass exit to big south deck. Great south walk-out. Basement with POTENTIAL GALORE. PARTY ROOM OR IN-LAW SUITE! LIST \$259,900. See & appreciate!



**OLD UXBRIDGE - \$129,900
POWER OF SALE**

Century features such as pine plank floors, high baseboards, high ceilings, original staircase, living rm., dining rm., country size kitchen, 3 bdms., all freshly painted, new flooring, new basement floor, beautiful 200' deep lot.



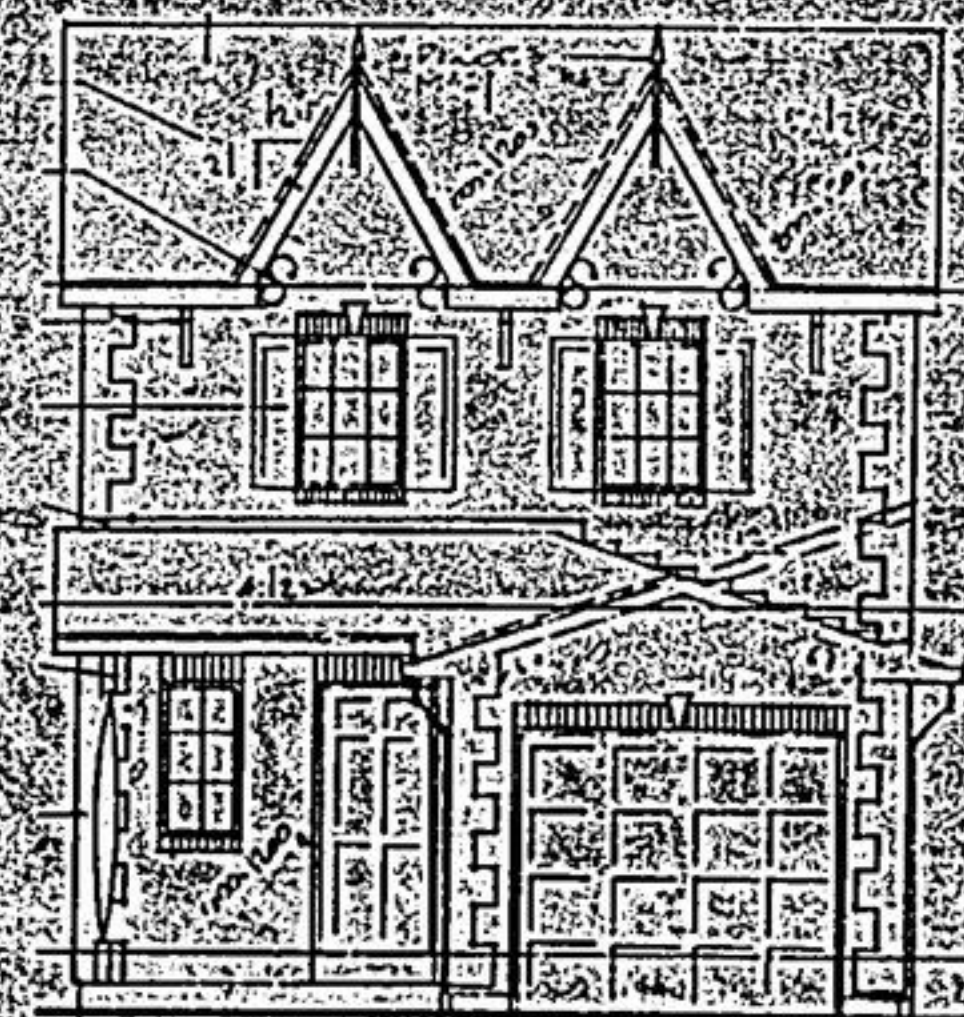
**NEED A SHOP? UXBRIDGE AREA
\$149,900. JUST LISTED**

Custom built '88 - 1200 sq. ft. 2 bdrm., chalet-style, full basement, 1-1/2 baths, 25' x 27' heated drywall shop, 12'6" ceiling, 50' x 264' treed lot, 2 driveways.

Call Lee Weldon, Associate Broker
510-1284 or 852-6143
Remax Scugog Realty Limited

ONLY 6 AVAILABLE

from
\$149,900
In Historic Uxbridge



All Brick
Walk-out basements included.
Beautiful Mature Trees
Walking Distance to Main St.
Sports facilities, Hospitals, Schools & Shopping

Ivory Forest Homes Inc.

298-8823

**IF YOU
ARE LOOKING
FOR THE
FOLLOWING:**

GREAT splits, management and support staff, location, buying and selling tools and systems, friendly atmosphere.

CALL AND TALK TO US!!!!!!!!!!!!!!!!!!!!!!!!!!!!!!



4460 #7 Hwy. Unionville, Ontario 477-2223
LEE REAL ESTATE
RESIDENTIAL REAL ESTATE
EXPECT THE BEST™
24 hr. pager service

5531 Main St. Stouffville, Ontario 642-2224 / 473-2224
RE-LOCATION SERVICES

COLDWELL BANKER - EXPECT THE BEST COLDWELL BANKER - EXPECT THE BEST