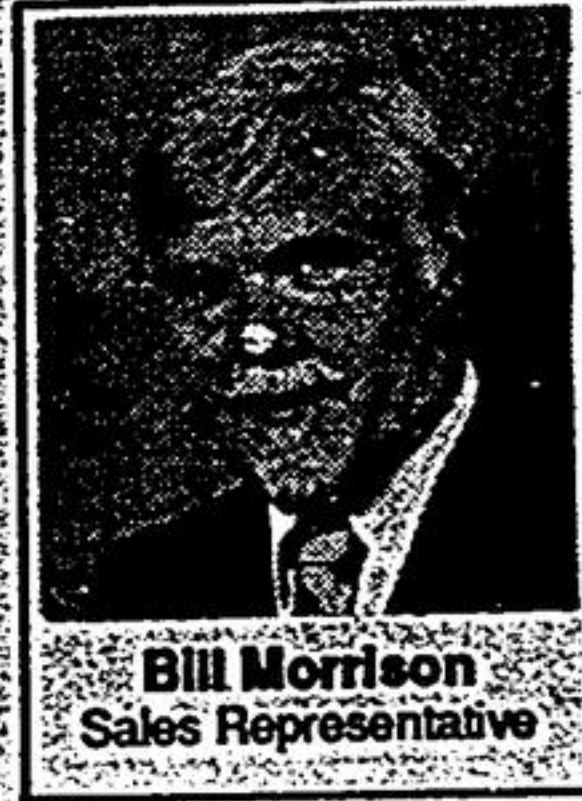




Heidi Morrison
Sales Representative

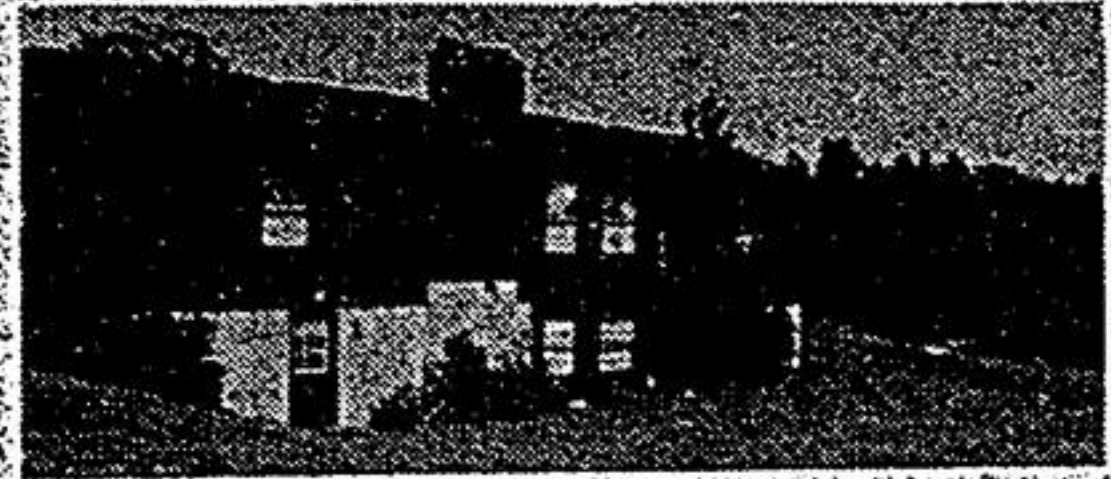


Bill Morrison
Sales Representative



LOVELY RAISED BUNGALOW ON MOST BEAUTIFUL 25 ACRE PROPERTY WITH POND

One of a kind only 1/2 hour from Markham. Suitable for empty nesters, family with teens or 2-family possibility. Lower level is completely finished. Endless potential. 5 year new 24'x42' steel clad building suitable for a multitude of purposes. A definite, "must see" \$349,900.



WHY PAY RENT? 2-BEDROOM CONDO APT. DON MILLS & EGLINTON

Shows like a model. TTC at your door. Minutes to downtown. Extremely well maintained building overlooking ravine. Get into the market with 5% down to qualified purchasers. Watch your investment grow. Listed at \$108,800.



BUNGALOW WITH DOUBLE CAR GARAGE

Only one of its kind being presented in Uxbridge at this time. Ideal for first-time buyers or retirees. No grass to cut; no snow to shovel; allows quality time with your children or time for travel. No need to worry about the property - it will be maintained while you enjoy the "better things" in life. \$161,900.

To view the above properties please call Bill or Heidi Morrison at 649-2231 or residence 852-6513



COUNTRY LANE REALTY LTD.

Hwy. 7A & High Street, Port Perry, Ont.
985-7351

An independently owned and operated member/broker of Coldwell Banker

Expect the Best



REDUCED TO \$284,900 PICTURE THIS

2550 sq. ft. custom built brick bungalow overlooking ravine lot with stream and pond inclusive, main floor family room with fireplace, unspoiled basement with full walkout-cul-de-sac location-Port Perry West-Call 985-7351.



FAMILY WANTED

This 2 storey home is located in town and has just been listed-features include 3 + 1 bedrooms-2 1/2 baths-finished recreation room plus inground pool in private backyard-\$184,500. Please call 985-7351.



HIGHWAY COMMERCIAL/INDUSTRIAL

3 acres including 2300 sq. ft. retail store and office space-approximately 9100 sq. ft. of warehouse area with loading docks-3 bay repair garage-complete with attractive residence on site-listed at \$399,000-Call for details-985-7351.



OAKWOOD AREA-100 ACRES

Fenced, stream, 20 acres bush-1750 sq. ft.-2 year old brick bungalow-full walkout basement-view for miles-severance potential-JUST LISTED at \$299,000.-Call 985-7351.



"SCHOOL HOUSE"

Professionally renovated and expanded to a charming 3 bedroom with living room/dining room combination-main floor family room plus big double garage with workshop on a large rural lot-REDUCED TO \$167,900-Call 985-7351.

POWER OF SALE- INCOME INVESTMENT

In Beaverton-good home on main street-apartment up & down-vacant-listed at \$94,500. Call 985-7351.

POWER OF SALE

Clean 2 bdrm. sided home on quiet street in Beaverton-large lot-listed at \$79,000-Call 985-7351.



MOVE IN AND ENJOY

Large 4 bedroom home-tastefully decorated, it offers everything a family needs-2 1/2 bathrooms-main floor family room with wood burning fireplace and a large, functional kitchen-centre hall planned at \$199,500-Call today 985-7351.



ELEGANT BUNGALOW LOCATED IN ONE OF

Port Perry's most desirable neighbourhoods, this 3 + 1 bedroom home sits on an estate sized lot-graciously decorated-notable features include: stone fireplace, main floor family room and laundry room, formal living/dining room area-double car garage-maintenance free exterior-listed at \$289,000. Call 985-7351.



NEW LISTING

4.93 acres of privacy is the setting for this 3 bedroom bungalow with full finished walkout basement-2 fireplaces-pine country kitchen-only \$149,000. Call 985-7351.



Located at Old Simcoe St./Regional Rd #2-this location gives high traffic exposure to develop your interests-large lot-older 1 1/2 storey home-detached double garage plus large storage garage-listed at \$189,900. Call 985-7351.



OPPORTUNITY

36 acres +/- with very scenic view over Lake Scugog including Century 2 storey brick home and outbuildings-Port Perry-3 miles-LISTED TO SELL-\$289,900.



COUNTRY LIVING, PLUS, PLUS, PLUS!

Port Perry-2 miles-one acre with a 2200 sq. ft. home-main floor family room-large kitchen-fully finished private quarters on lower level-double garage-40' x 30' insulated workshop with loft-many more features-JUST LISTED at \$239,900. Call 985-7351.

COUNTRY PROPERTY SPECIALIST

NEW LISTING \$204,900
Uxbridge area - quiet cul-de-sac, next to parkland, mins. from Wagner's Lake, custom built brick bungalow with huge garage, workshop.

NEW LISTING \$109,000
YES, ONLY \$109,000.
Large Century home in a village setting. Large yard, barn, good solid home. Commercially zoned or just live there! Great starter!

COUNTRY GET-AWAY \$229,000
N/E UXBRIDGE
If you are looking for the unusual, this is it! Lovely home on gorgeous private 10+ acres, apple, blue spruce, maple trees & pond & meadows.

SINIKKA FITZGERALD*
Sales Representative
WINNER OF PRESIDENT'S AWARD OF EXCELLENCE
1991, 1992
47 Brock St. W.
Uxbridge
852-9781
649-2231

COUNTRY PROPERTY SPECIALIST

PRIVATE SALE

5 BDRM. HOME ON 11 ACRES

On the most magnificent ... treed 11 acre estate property in Uxbridge, next to \$750,000 estate homes, on 1.5 acre lots. The property fronts 800 ft. to the paved subdivision road. This 3500 sq. ft. home includes: 5 bedrooms, living room, dining room, country kitchen, family room, TV room, 2 fireplaces, 3 baths, laundry room, 5 walkouts, large balcony, heat pump with central air, central vac. etc. New wall to wall carpeting to be installed. Custom built sauna with shower & dressing area incl. whirlpool bath to be built on the lower level. There is an excellent potential to divide this property into 6-7 estate lots in the near future. Only \$695,000. Shown by appointment. serious inquiries - call 985-0387.

Offers welcome!

AFTER HOURS:

Jannette Peters	Res: 985-3927
Bruce Peters	Res: 985-3009
Denise Kingma	Res: 986-0611
Anita Whitworth	Res: 985-4183
Steven Brower	Res: 986-0687
Gail Scala	Res: 986-5983
Keith Puckrin	Res: 985-2489
Brett Puckrin	Res: 985-2489
Ralph Fairman, F.R.I.C.R.A.	Res: 986-5983
Winda Walsh	Res: 986-4335
Robin Parish	Res: 705-439-2173
Roy Corden	Res: 985-9412
Dianne Hooker	Res: 985-2276
Geoff Cartwright	Res: 985-8163
Peter Davidson	Res: 985-0369
Ann Purvis	Res: 985-0400

MEMBER OF THE ONTARIO & DISTRICT
REAL ESTATE BOARD (M.R.S.E.)
A MEMBER OF THE SEARS FINANCIAL NETWORK