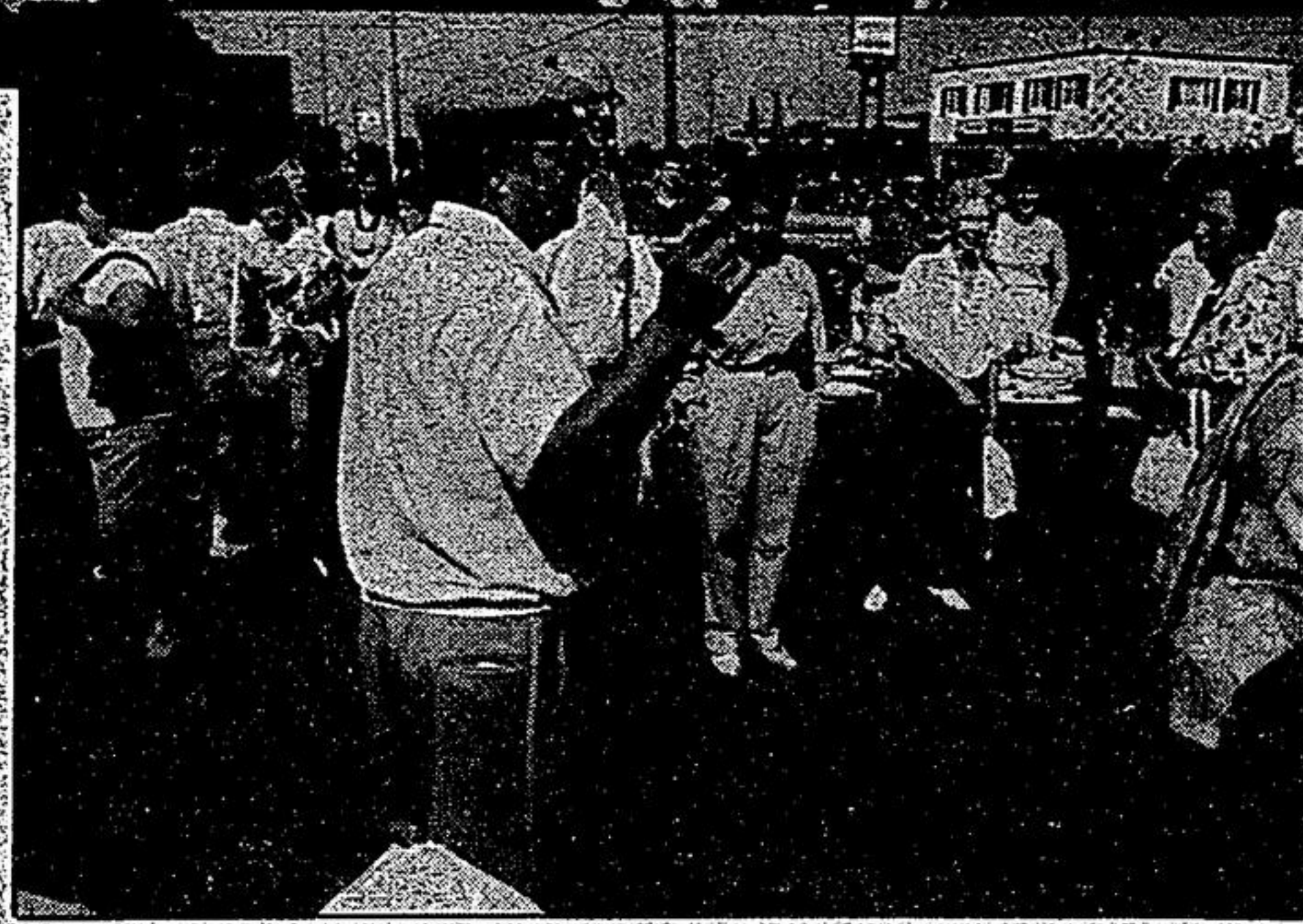


Auction time...



Photo by JOERD WITTEVEEN
Edna Mashinter's moving into a new apartment at Parkview so she auctioned much of the contents of her home last weekend. Above, she talks with friend Viola Elson on the lawn at the sale. At right, auctioneer Stan Polard explains the procedures to the auction crowd. At left, Kay Morrison (left) of Boston, in town for a family reunion, relaxes with June Preston under the shade of a tree in the yard.



Pollution Probe deems fly ash as hazardous

(From page 1)

Ontario Environment Minister Ruth Grier, under her new legislation, has banned the use of municipal waste incinerators as an option for garbage disposal. She has stated that incineration is yesterday's solution to today's problem.

In New York State, however, 18 waste-to-energy incineration plants (where burned refuse is used as fuel) have been operational for more than a decade.

U.S. government officials insist there is no difference to burning waste than there is to burning coal or oil.

But Pollution Probe said no matter how you look at it, fly ash is "still toxic waste."

"Incineration doesn't eliminate landfills" either, Schwartzel said.

She added that "unacceptable" levels of lead are contained in the ash.

"The annual emissions each year (that leave incineration stacks) add up to tonnes of lead that gradually sift down through the neighborhoods," she said.

However, U.S. officials are satisfied that emissions are 99.999 per cent "environmentally safe" after fumes pass through state-of-the-art cleaning equipment.

But Schwartzel said that figure pertains to "what comes out after the ash is removed, which doesn't show the high lead counts."

Incineration plants turn big profits, Swartzel said, which discourages recycling and encourages companies to build the "big sucker."

In Niagara County, where Occidental Chemical burns 600,000 tonnes of municipal waste each year, there is currently no recycling program. However, the plant currently recycles 18,000 tonnes of tin each year, plant officials said.

Red carpet rolled out for Kirkland

Whitchurch-Stouffville will "roll out the red carpet" tonight (Tuesday) for guests from Kirkland Lake.

Mayor Fran Sainsbury said Monday that Kirkland Lake Mayor Joe Mavrinc and Joe McGuinty, president of the corporation which owns the abandoned Adams Mine site, will attend the meeting hosted by Markham Conservative MPP Don Cousens. Other

politicians are also expected to attend the meeting.

Residents will have the opportunity to hear Kirkland Lake's stand on the issue and find out more about the possibility of rail hauling Metro Toronto's garbage to the northern town.

The meeting starts at 7:30 p.m. at the Recreation Complex. Residents are encouraged to attend.

Rider makes pit-stop

Judith Arnold made a pit stop on her cross-Canada journey in Stouffville recently.



ARNOLD

She is riding from St. Johns, Newfoundland to Victoria, British Columbia to raise money and awareness for the Canadian Council of the Blind.

The 26-year-old started her journey in March and hopes to reach B.C. in December.

She is aiming to raise \$500,000 and has raised \$20,000 so far.

Arnold was born with sub-luxated lenses, which is a weakening of muscles that hold the lenses. She sees two or three images of everything.

The Stouffville stop was not on Arnold's itinerary, until she needed to have adjustments made to her saddle. Arnold stopped at Schleese Saddlery Service on Kennedy Rd, rapidly becoming famous in the equestrian world for custom saddle work.

Region

Road safety to improve at Musselman

York Region will improve roadway safety measures on the 9th Line at Musselman Lake.

The region has agreed to erect flashing amber beacons over the 'Sharp Curve Ahead' warning signs at the north and south entrances to the curvy lake road. York's transportation and environmental services committee recommended Thursday that the amber lights be installed in response to safety concerns by

residents. Musselman Lake residents threatened to form a blockade after the latest traffic crash June 7, when a car plunged into the lake causing injury. Some long-time residents say they've witnessed more than 20 accidents on the road because of speeding drivers. This poses a safety hazard for their families, they told Whitchurch-Stouffville council last month.

The region had received a reso-

lution from the town requesting York "immediately erect speed control signage on the 9th Line... and research measures to further reduce the speed in this area." Further investigations led to the following safety measures which are currently underway:

improving warning signs for the southbound approach at the north end of the lake, including the posting of an advisory 20 km per hour speed limit.

replacing vandalized signs,

missing and damaged guide posts.

trimming tree limbs blocking existing signs.

Investigations into accidents at the lake showed a high number of southbound vehicles hitting the guide rail at the north end of the lake, indicating that "motorists may not be fully aware of the severity of the curve in the roadway to the lake," the committee stated in its report to council last week.

Crime Watch

Dish left results in charges

A man has been charged following a complaint from a Whitchurch-Stouffville resident who lost a satellite dish and receiver. The Stouffville man reportedly took the dish to a Markham company at Hwy 7 and Ninth Line for service in September 1991.

When the customer returned for the equipment, valued at \$4,700, he discovered the business was no longer there.

A Markham man, 46, of Washington St., was charged Friday with theft and possession over \$1,000.

Man arrested
A 22-year-old Stouffville

man was arrested at Greens Restaurant early Saturday morning.

The Montreal St. man faces charges of resisting arrest, being intoxicated in a public place and obstructing an officer by giving a false name.

Tractor stolen
Police were called to the Tractor Barn in Whitchurch-Stouffville after a truck and tractor were reported stolen over the weekend.

The theft was reported Sunday afternoon after it was discovered a white truck and a lawn tractor were removed from the parking lot of the Woodbine Ave. business.

**KIDS
EARN
EXTRA
MONEY
BECOME A
CARRIER
TODAY**

Call:
640-2100
(Stouffville)

Attention Flyer Advertisers
We can deliver your flyers for as little as 4¢ a piece. So far this year we have delivered 15,594,552 flyers door-to-door in Markham, Unionville, Milliken, Stouffville, Uxbridge, Clarendon, Dickson Hill, Locust Hill, Gormley, Goodwood, Victoria Square, Brougham, Hagerman Corners, Box Grove, Cedar Grove, Buttonville, Sandford, Goodwood, Leaskdale, Greenbank, Udon, Sunderland, Zephyr, Ashburn, Cannington, and all adjacent rural route areas. We can deliver your flyers on the day you want to the area you want - any quantity from 5,000 to 48,000.

For Advertising and Distribution inquiries call:
Retail Advertising at 640-2100
Classified Advertising at 640-2100
Distribution Inquiries at 640-2100
(From Uxbridge 649-2292)
or Fax your inquiries to 640-5477

INSERTS FOR WED. JULY 22/92
National Sports
Shopper's Drug Mart
Woolco
Super Wheels
Home Expressions W
W.S. Chamber of Commerce
Station Fish & Chips
Alkens Pharmacy
Selected Areas Only