



RE/MAX

An international network of independent member brokers

RE/MAX scugog realty limited

144 QUEEN STREET, PORT PERRY

Independent member broker

985-4427 TOR. LINE: 428-1332

184 OFFICES THROUGHOUT ONTARIO



AFFORDABLE WATERFRONT HOME

This 1100 sq. ft. bungalow features over a half acre lot fronting on Lake Scugog. It's had a recent facelift, inside & out, is only 1 hr. commute to Toronto, and is ready for summer possession. Newly listed at \$142,900. Brenda L. Castells* 985-4427. 24 hr. pager.



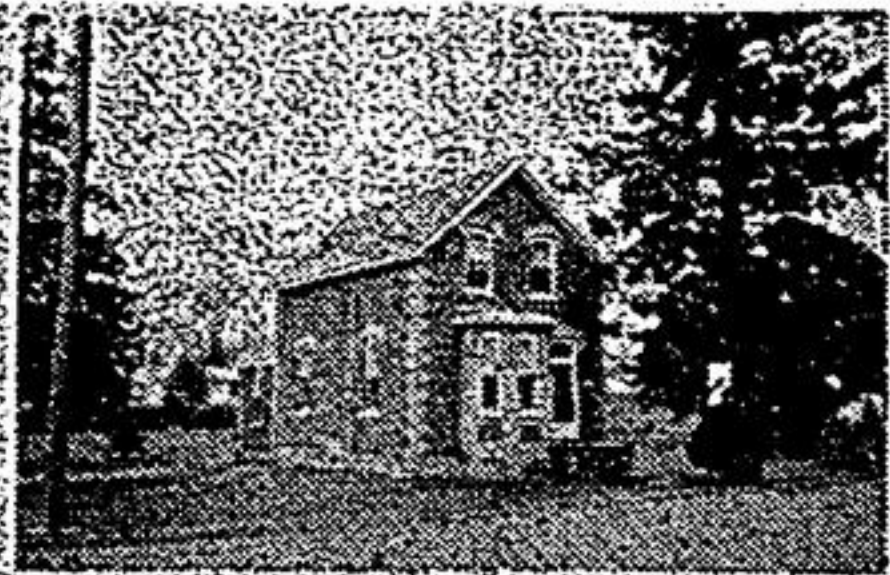
STUNNING CAPE COD!

Gorgeous from top to bottom! Floor to ceiling reclaimed brick fireplace, spacious country kitchen & a spectacular view! \$239,900. Call Robert* or Carolyn* Hall 985-4427 or 985-7718 (res.).



AFFORDABLE COUNTRY!

Beautifully landscaped 1/2 acre lot tastefully decorated 3+1 bedrooms huge fam. room-pool & many other features! \$209,900. Valerie Eden* pager 416-985-4427.



GREAT STARTER! \$89,900
Exceptional 2 storey home on huge lot, in quiet town north of Port Perry ready to move in! Immaculate! Call Valerie Eden* pager 416-985-4427.



SUMMER IS HERE!
Super summer cottage on huge lot good waterfront, just north of Port Perry. In quiet area! Only \$139,900. Valerie Eden* pager 416-985-4427.



\$135,000 SUNDERLAND
Well kept 3 bedroom home, large in-town lot with mature shade and fruit trees. Ideal retirement or family home near shopping, arena, school, medical centre in quiet country town. Mark Puckrin* 985-4427.



Mark Puckrin*

THINKING OF SELLING?
Get your money's worth! Hire an active, full-time Real Estate professional. Serving the greater Sunderland and Port Perry area. Contact Mark Puckrin* 416-985-4427 res. 985-1909.



ONE OF A KIND
Contemporary home on 1/2 acre with 4 bedrooms, 2 1/2 baths. Huge oak kitchen, mn. fr. laundry and more. Call Adrienne Hansen* at 985-4427 or Tor. line 428-1332.

*Sales Representative ** Assoc. Broker



RE/MAX

scugog realty limited

an independent member broker

9 main street south, box 1298

uxbridge, ontario, L9P 1P7

852-6143

Tor. line, 510-1284



LOOKING FOR CHARACTER
Large foyer, winding staircase, at least 6 rooms measuring over 16 ft., unique back stairs & a rear yard with perimeter & inner circle hedge. If you like the uniqueness of older homes, don't miss this one at \$229,000 Jim Wood*.



NO LABOUR HERE
Fully finished basement includes games room, rec. room, 4 bedroom & bath, entrance from the garage offers in-law potential. Large bright kitchen with doors to decks & fields. In town country living for \$209,000 Jim Wood*.



BUY NOW BE PAID LATER
34 acres, edge of Cannington, set up for horses. Century brick home with large principal rooms. Land is draft plan approved for industrial. Prime location for kids, horses, country living & future investment at \$299,000 Jim Wood*.



TRY YOUR OFFER HERE!
Owner says sell! Grandma's house with 1990's updates. Perfect showcase for your antiques. Detached coach house for your hobbies. Hamlet of Goodwood \$199,900 Anne Powell* 852-5450.



HOBBY FARM \$187,000!
1 1/2 acre NE Uxbridge, 5 stall barn, 2 large paddocks, 3 bdrm. Century home with updated plumbing, wiring, windows. Above ground pool. Ideal starter for the horse lover! Anne Powell* 852-5450.



NEW PRICE \$179,000!
Reduced \$20,000! Great opportunity for family business, 10 min. N. of Uxbridge. Charming bungalow, lge. lot, plus 900 sq. ft. take-out restaurant. Work at home! Anne Powell* 852-5450.



\$164,900!!
Immaculate 3 bdrm. raised bungalow in Port Perry. Located close to schools, shopping, waterfront, fenced rear yard, walkout to deck, eat-in kitchen, dining rm., finished basement. Call Dave Beare* 852-6143 24 hr. service.



COPS & ROBBERS
Have been using this building, now it's available to you. Downtown Uxbridge commercial, use your imagination & call to see, offered at \$165,900 Jim Wood*.



REDUCED TO \$219,000!
1 1/4 acre close to Uxbridge. Ideal hobby farm. Small barn, lge. paddock, immaculate, well decorated 3 bdrm. bungalow with spectacular rec. rm. Separate dining. Anne Powell* 852-5450.



HOT THOUGHTS SIZZLE!
In your own pool! \$259,900, 4 bdrms., 2 baths, 2 fireplaces, main floor family room. Extra large bungalow in desired Testa Heights. Carolyn Robinson* Uxbridge. Off. 852-6143, Tor. 510-1284.



UXBRIDGE \$159,900
4 bdrm. semi with basement apartment, low down payment (OAC) lower level rental can finance your way to home ownership. Call Lee Weldon** for details!



WHAT A FIND
Sacrifice at \$199,900, was \$269,900. Vendor wants it sold! Great Century home, large country kitchen with wood stove, main floor family room, master with walkout to balcony, 2 baths, huge lot, backing onto farm land. Just North of Newmarket. Call John Huddart* Tor. line 510-1284.



ON THE RIVER
Great starter, newly drywalled, nice level lot, almost 3/4 acre, freed, good value under \$100,000. Call now John Huddart* bus. 510-1284.



PARK HERE!
10 ACRE RETREAT \$269,900
Deer, Blue Jays and Cardinals! Open concept bungalow! Manicured landscaping, 15 mins. to 404. Carolyn Robinson* Uxb. off. 852-6143, Tor. 510-1284.



Carolyn Robinson*

Re/Max Scugog Realty Ltd. is very pleased to welcome Carolyn Robinson as a Sales Representative. Carolyn always puts 100%+ energy into servicing her clients. We invite you to contact Carolyn at Re/Max Scugog Realty Ltd. 9 Main St. S. Uxbridge. Uxb. 852-6143, Tor. 510-1284.



GOLF ANYONE? \$129,900!!
3 bdrms., large kitchen, maintenance free exterior. Carolyn Robinson* Uxb. office 852-6143, Tor. 510-1284.



TREE LINED STREET! IN THE RIGHT NEIGHBOURHOOD
Lovely backsplit, main floor family room, 2 baths, \$229,900 Carolyn Robinson* Uxb. office 852-6143, Tor. 510-1284.



\$169,900 UXBRIDGE
TRY \$1800 DOWN!
Recent flooring main level, recent high eff. gas furnace, 2 kitchens, 2 baths, woodstove in rec., 3+1 bdrms., central location. Lee Weldon** bus. 510-1284.



THIS ONE IS LOADED!
Careful, one beautiful bungalow, high eff. gas furnace, 2 fireplaces, upgraded windows, intercom, rec room, games room, den, 2 1/2 baths, plush broadloom, enclosed porch, interlock walkway, real value @ \$224,900 Lee Weldon**.



GOODWOOD 1 ACRE
\$214,900
Lee Weldon** 510-1284



UXBRIDGE 3/4 ACRE
\$269,900
Lee Weldon** 510-1284



SANDFORD 1/2 ACRE
\$224,900
Lee Weldon** 510-1284



JOHN HUDDART* 852-9665



DAVE BEARE* 985-0471



Carolyn Robinson* 510-1284



ANNE POWELL* 852-5450



LEE WELDON** 510-1284



JIM WOOD* 852-3237



R.J. SMITH 705-357-3092

*Sales Representative ** Assoc. Broker