

Council

Residents expecting zero tax increase: Roy Graham

TRACY KIBBLE
Staff Reporter

Residents will be looking forward to a zero per cent tax increase in Whitchurch-Stouffville this year, officials were told last week.

Roy Graham, a retiree and former corporate divisional manager, told council, "seniors cannot afford more taxes." He added his overall tax bill, including regional and school board taxes, has increased by 43 per cent since 1987. Graham said large corporations have frozen salaries this year, "for the first time in 100 years," and urged the town to do the same.

He warned council that tax arrears, already at \$3 million,

will increase because people can't afford to pay them.

"I want to see headlines that council approves a budget at the same level as 1991," Graham said.

Graham, who formed a delegation March 24 regarding town pay hikes, criticized officials for handling staff salary increases in-camera, and predicted ratepayers would lose faith in the process if the issue is not re-evaluated. "In this case, silence is not golden," Graham said.

Graham also referred to a March 28 *Tribune* story in which Mayor Fran Sainsbury was quoted as saying staff is being "harassed," by the public because of salary increases

totalling at least \$160,000.

"I resent my delegation being labelled as harassment. Taxpayers have every right to know this," Graham said.

Ward 3 councillor Nick Tatone told Graham that his "knife is not very sharp," and added that there should be a

lot of "good stories on how staff saved the town thousands of dollars," after budget deliberations this week. The budget was unveiled Tuesday after press time.



TATONE

CHATS to improve services

Community Home Assistance for Seniors (CHATS) announced last week it is re-organizing and streamlining its administration to provide better service to local seniors, officials were told.

Chairman Lynelle Hamilton said CHATS, formerly Home Support Services to Seniors, is streamlining its 10 offices to four, which will provide sufficient staffing, extended hours and volunteer back-up for clients at all times.

Whitchurch-Stouffville and Markham areas will now combine efforts to serve both communities at one office, she said.

Hamilton added the organization is still, "committed to allowing seniors the right to maintain the lifestyle they wish in their own homes." However, CHATS, which has been in

existence since 1981 and serves 50 local seniors, will still maintain its occupancy at the Main St. Silver Jubilee Club, Hamilton said.

"(The Silver Jubilee Club) will provide a continued presence for Whitchurch-Stouffville homemakers, volunteers and clients for local events, meetings and distribution of materials," she added.

Hamilton said boundary changes cut expenses of separate offices and will allow the group to expand its services. CHATS, which serves 3,000 York Region seniors, provides homemaking, housekeeping, menu planning, transportation and shopping services, and offers a nutritional meal-on-wheels program twice a week. She added the cutbacks did not affect any jobs within the organization.

Swimmer makes splash at council

A local swimmer has raised \$6,000 for charity and is asking for council's continued support this year.

Angela White, a Musselman Lake teenager, has been a member of the Newmarket Stingrays swim club for six years. During her membership, the young woman has dedicated many hours to raising money for the

York County Hospital in Newmarket. The Stingrays club, which has donated \$33,000 to the hospital over the years, hope to raise more funds this year for the pediatrics ward at York County.

White, who said she spends about 15 hours a week training for different meets in Newmarket, wants the town to donate money for the 200 lengths she

will swim this year for the cause.

Mayor Fran Sainsbury noted that many Ward 1 and Ward 3 residents use York County Hospital instead of the new Markham-Stouffville facility, and congratulated White for her accomplishments. Council voted to discuss an appropriate sponsor amount this week during budget deliberations.

Foodbank

Magee addresses council on local need

(From page 1)

"The money is just not there for them now."

York Region has eight foodbanks and organizers of each community have co-ordinated a network where volunteers meet to discuss the problem and ini-

tiate food drives, Magee said.

"We are not a bunch of good-doers who think we are solving the social injustices in the world; and we know we serve only as a band aid.

"We are just ensuring the people get food and the children

don't go to school hungry," Magee added.

She told a packed council chamber that January's client usage rose 537 per cent; February's, 49 per cent and March, 85 per cent. Magee said the figures are expected to get worse this month.

She is pleading for the 17,000 people who live in Whitchurch-Stouffville to donate one high-protein food item each for the WSF Easter food drive to be held April 8 to 22. She said if everyone donates one item, "we can do this."

For more information about the WSF call Magee at 640-7895. *The Tribune* accepts donations and provided bags in last week's issue for foodstuffs.

WSF Easter drive on now

The Easter Food drive is on at the Whitchurch-Stouffville Foodbank (WSF) and organizers are asking people to help as much as they can.

"It's the responsibility of those who have to help those who don't," Robyn Magee told local officials and a packed council chamber this week. The food drive began Wednesday and runs to April 22. Magee said the bank desperately needs high-protein and high quality foods to ensure children are receiving a nutritional diet. Nearly 50 per cent of people using the WSF are children, and Magee said this is a high ratio compared to other communities.

"We don't want children going to school hungry."

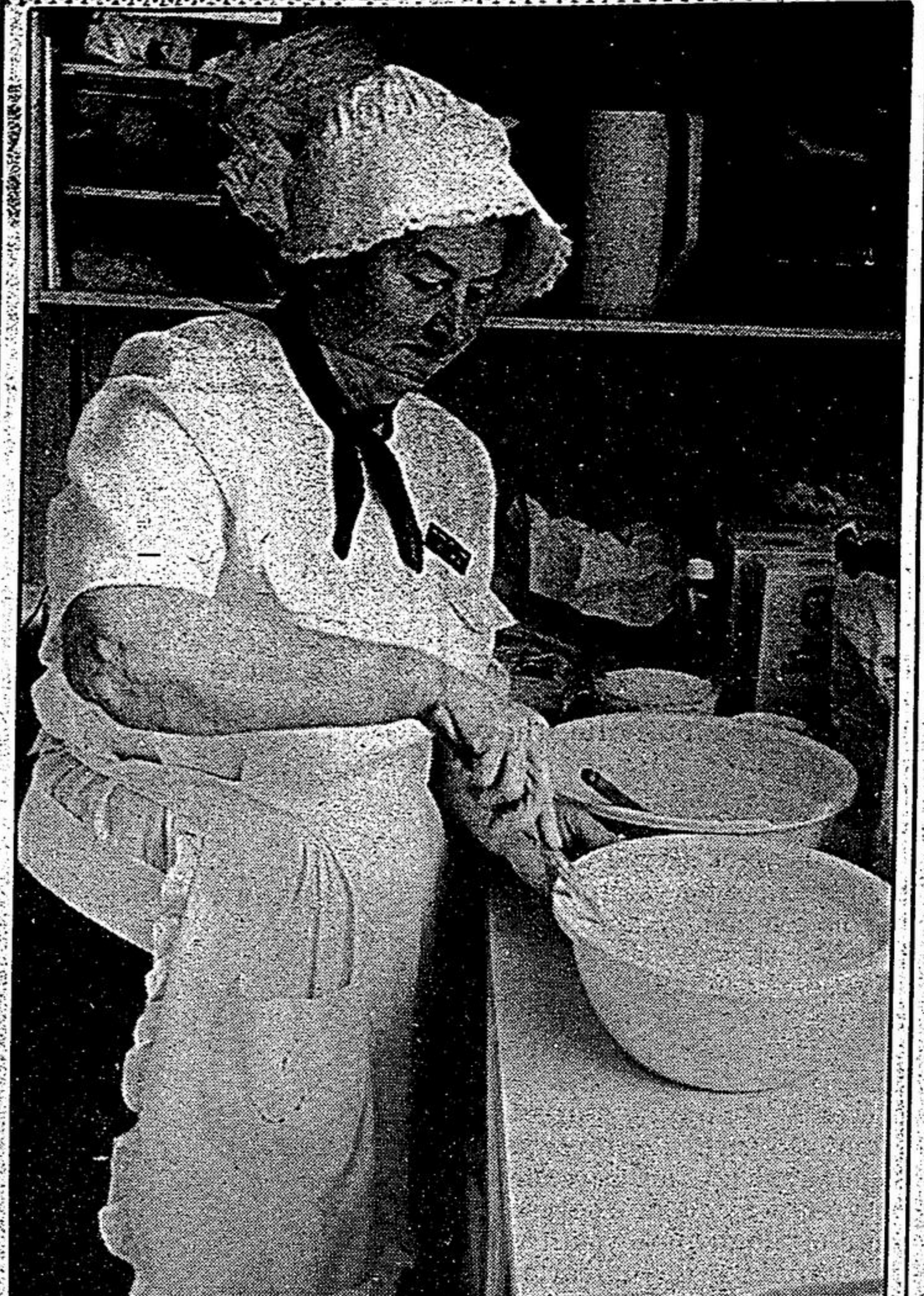
She said beans, fish, peanut butter, cheese, pasta, skim milk powder and canned vegetables are excellent foods to drop off in any of the local bins available in businesses throughout the community. She also said people who hold functions and have food left over - even if it's perishable - can call the WSF, which will gladly pick up anything they may otherwise throw out.

For more information about the WSF call Magee at 640-7895 or drop off your donations at *The Tribune*, IGA, A&P, and the Care and Share Shoppe.

Another winner!

Guy Castonguay is the latest winner in our Great Button Contest.

Guy was spotted in the Stouffville IGA wearing his *Tribune* button by spotter Tracy Kibble.



Photo/ANNETTE BUCHKOWSKI

Batter up!

Volunteer Gladys Clarkson prepares some pancake batter for the crowds at the Whitchurch-Stouffville Museum Maple Syrup Festival pancake brunch this past weekend.

Investigation continuing into youth feud incident

Despite police fears that trouble involving youth unrest may have been brewing as a follow-up to last week's events, it was a quiet weekend in Stouffville.

There were no reports of incidents in the area of Memorial Park, or in the downtown area, where a crowd of youths had gathered last Wednesday as part of an apparent feud involving Stouffville and Markham youths. (See *Tribune Weekender*, April 11)

York Region Police Inspector Wes Bonner told *The Tribune* Monday that his people had been warned there was to be a potentially dangerous gathering of youths this past Friday night. "Police were concerned there might have been problems arising over the weekend, but nothing happened," said Bonner. Cruisers were stationed in Stouffville Friday as a precaution, he said. Bonner confirmed that the recent incidents,

including a scuffle involving youths April 3 in the park, were being investigated by police, but would not say what form the investigation was taking.

"To divulge what we have done so far would interfere with the investigation which is being undertaken," he said.

He added that no charges had been laid to date in connection with the incident, but that police were determined to get to the bottom of it.

Trees to be planted

Beavers, Cubs, Scouts and Ventures will be planting 1,500 trees locally on May 2. The program will take place at the Stouffville Reservoir as part of Trees for Canada program.

The program will be run in conjunction with the town and the Metro Toronto Conservation Authority.

Attention Flyer Advertisers
We can deliver your flyers for as little as 4¢ a piece. So far this year we have delivered 8,259,929 flyers door-to-door in: Markham, Unionville, Milliken, Stouffville, Uxbridge, Clarendon, Dickson Hill, Locust Hill, Gormley, Goodwood, Victoria Square, Brougham, Hagerman Corners, Box Grove, Cedar Grove, Buttonville, Sandford, Goodwood, Leaskdale, Greenbank, Udora, Sunderland, Zephyr, Ashburn, Cannington, and all adjacent rural route areas. We can deliver your flyers on the day you want to the area you want - any quantity from 5,000 to 46,000.

For Advertising and Distribution inquiries call:
Retail Advertising at 640-2100
Classified Advertising at 640-2100
Distribution Inquiries at 640-2100
(From Uxbridge 649-2292)
or Fax your inquiries to 640-6477

KIDS EARN EXTRA MONEY BECOME A CARRIER TODAY
Call: 640-2100 (Stouffville)

INSERTS FOR WED. APRIL 15/92
White Rose
National Sports
Shoppers Drug Mart
* Selected Areas Only