



MARY HOGG Manager Res. 852-3292
 SINEKKA FITZGERALD Res. 852-3874
 STACY KEARLEY Res. 228-8182
 BOB ABBATERUSSO Res. 852-6676



FAMILY TRUST CORPORATION REALTOR

UXBRIDGE

Welcome home



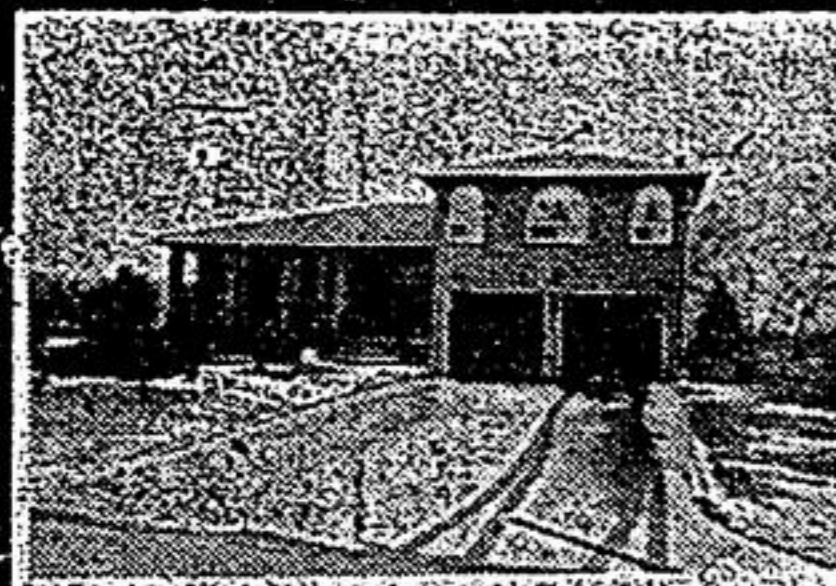
LOIS WATSON Res. 852-9677
 JACK RANDALL Res. 852-3838
 HEIDI MORRISON Res. 852-6513
 CAROLYN ROBINSON Res. 895-1520



NANCY GIBSON Secretary
 JENNIFER KENNY Res. 705-357-2458
 MARLYN McDONALD Res. 705-357-2527
 CORA PEARSON Res. 852-5808



NADIA TORRES Res. 228-2177
 SHEILA DISLEY Res. 473-2963
 BILL MORRISON Res. 852-6513
 MARY LYNNE MCGIVERN Res. 473-2977



NEW PRICE \$219,000
 Very spacious layout, located south of Uxbridge, on a lovely mature 1/2 acre lot! 3 bedrooms, 2 baths, main floor family room and much more. Nadia Torres* office 852-9781 or 642-2126.

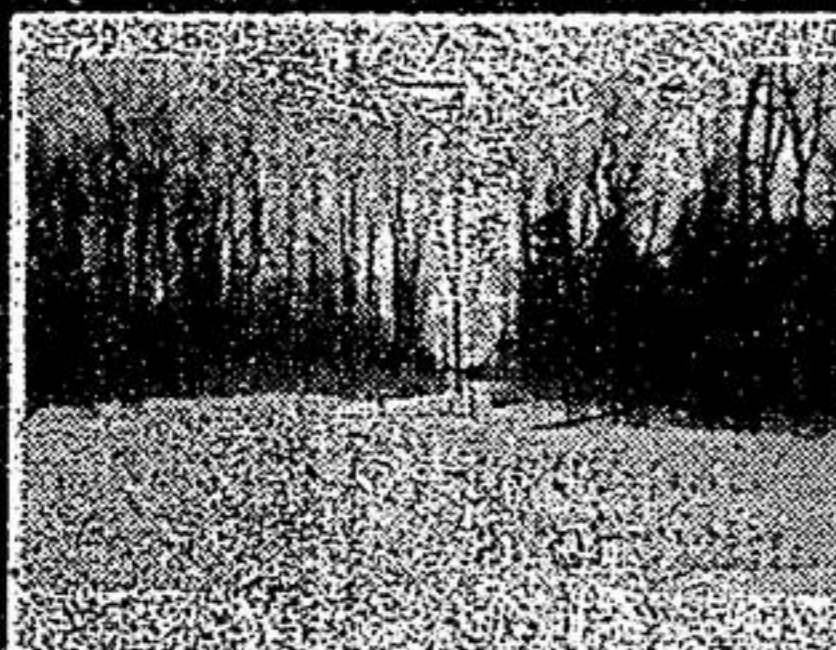


BOB ABBATERUSSO Res. 852-6676

BUILD YOUR DREAM HOME
 Cleared 2.32 acre building lot just north of Uxbridge, surrounded by farmland on quiet road. Twenty minutes to Hwy. 404, reduced \$104,900, Bob Abbaterusso* office 852-9781, 642-2126.



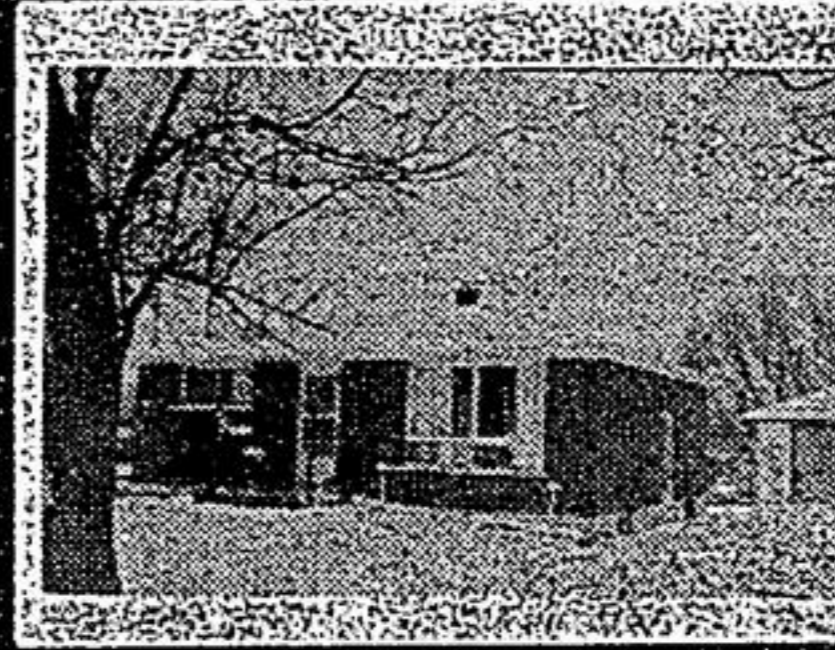
THE SUN THE MOON & THE STARS
 Seem even closer from this 2 storey 4+1 bdrm. with main floor fam. rm., brick fireplace, situated on 9 acres with fabulous view \$279,000 N/E Uxbridge Jennifer Kenny* office 852-9781.



SWEET SECLUSION
 19.5 acres waiting for you to build on, well treed to ensure privacy, open fields at back \$99,900, Cannington, Jennifer Kenny* office 852-9781.



MOVE TO THE COUNTRY
 3 bedroom country charmer, 2 yrs. new, white washed Oak cupboards, plush broadloom throughout, cozy fireplace, mature tree lot \$179,900 N/E Uxbridge, Jennifer Kenny* office 852-9781.



START HERE TO OWN! NORTH OF UXBRIDGE
 \$129,900
 Brick bungalow on lot with mature trees, garage work shop, hardwood floors & full basement. Don't miss this!! Marilyn McDonald* office 852-9781.



COTTAGE TIME!! LOTS!!
 2A - \$35,000 +
 33A \$55,000
 Salmon Lake, Parry Sound, develop your own piece of paradise, water access, ideal canoeing to Georgian Bay. Marilyn MacDonald* office 852-9781.



\$149,500

TAKE ADVANTAGE OF THE LAND TRANSFER TAX REBATE
 End unit bungalow for first time buyers or retiree in Uxbridge. Maintenance free w/plenty of time to pursue your interests. Heidi Morrison* office 642-2126.



\$239,000

REDUCED MUST SELL!!
 20 MIN. NE OF MARKHAM
 4 bedrooms, 2 1/2 baths, 100' x 200' lot, Toronto tel. exchange plus large addition, unbelievable value, bring an offer Heidi Morrison* office 642-2126.



\$153,900

IT'S A REAL BARGOON!
 Just mins. north of Uxbridge in a quaint Hamlet on a mature fenced lot. Upgrades galore & shows to perfection! Not to be missed. Stacy Kearley* office 852-9781 or 642-2126.



\$139,000

ON A 1/2 GORGEOUS ACRE LOT!
 10 min. north of Uxbridge on a dead end rd. abutting a private park. Features are a double garage with a workshop, 4 bedrooms, rec. room, fireplace, dining rm. and more. Stacy Kearley* office 642-2126.



COUNTRY QUIET 25 ACRES \$429,000
 Picturesque horse farm operation just east of Uxbridge. Oversized main floor family room, walk out from dining room, beautiful views. Bob Abbaterusso* office 852-9781, 642-2126.



NO MISPRINT HERE 50 ACRES \$329,000
 Peaceful country property on quiet concession road in Uxbridge township. Ten room sidesplit, setback from road, with ponds and outbuildings. Bob Abbaterusso* office 852-9781, 642-2126.



FARM OPPORTUNITY 200+ ACRES
 Dairy farm 8 km N. of Uxbridge. 170 acres workable, excellent soil, 2 houses, barns & implement sheds. Bill Morrison* office 642-2126 or 852-9781.



A PERFECT 11! ACRES! SOUTH UXBRIDGE
 Private dead end road, custom 4 bdrm., family home, cathedral ceilings, stone fireplace, lots of windows. Bulbs waiting to bloom!! \$429,000. Mary Hogg* office 642-2126.

852-9781 MEMBERS OF TORONTO & YORK REGION REAL ESTATE BOARDS 642-2126

THE MORTGAGE CENTRE

FIRST LINE

MORTGAGE SAVINGS
 \$\$\$\$

10.19%
 5 YEAR

THIS WEEK'S LOW RATE
7.50%
 Variable

MORTGAGE RENEWAL

No Cost Transfers

Rates subject to change
 Applicants to qualify

Call Now ... Vijay Patel / Kapil Patel

Office 940-6007 Home 471-6999

We Provide In-Home Service 7 Days a Week

GEORGE MILLER FINANCIAL SERVICES INC.

AN INDEPENDENT MEMBER OF THE FIRST LINE MORTGAGE NETWORK

THE MORTGAGE EXPERT

A MARKHAM/UNIONVILLE RESIDENT FOR THE LAST 12 YEARS

ARE YOU PAYING BANK RATES?
 Look Here

7.50% - 3 years fully open (based on prime)
 8.59% - 5 years semi open (adjustable rate)
 Up to 95% financing available - free transfers
 2nd mortgages 7.50% (loan to value 75%)

VR MORTGAGES

2810 Victoria Park Ave., Suite 107, Willowdale
 Bus. 499-6910 Evgs./Weekends 475-5656



Amin Hall

SLEEPY HOLLOW GOLF COURSE ESTATES STOUFFVILLE

Approx. 1 acre of land, featuring a 3800 sq. ft. home plus finished basement, sunken fam. rm. with fireplace, custom kitchen with w/o, master bedroom has w/i closet, ensuite, and sitting area, separate formal dining room, den, hot tub, 2 fireplaces, sauna, change room built into the 4 door garage for the inground pool.

\$525,000

Call for appointment 642-0419



Read Us First!

We have the most up-to-date listings available

TRIBUNE ECONOMIST & SUN
 WEEKENDER BEST HOMES
 640-2100 294-2200