

Greetings from Hank & Sina De Groot

When Hank and Sina De Groot decided to make a change in their lives, they did it in a big way.

Former real estate sales representatives and residents of Stouffville, the couple moved back to their native Holland.

Located close to Apeldoorn, the De Groot's picturesque one-acre property is superbly landscaped with ponds, waterfalls and fountains. Although it is situated in a tourist area, the villa is nestled in a secluded spot - a quiet and serene getaway.

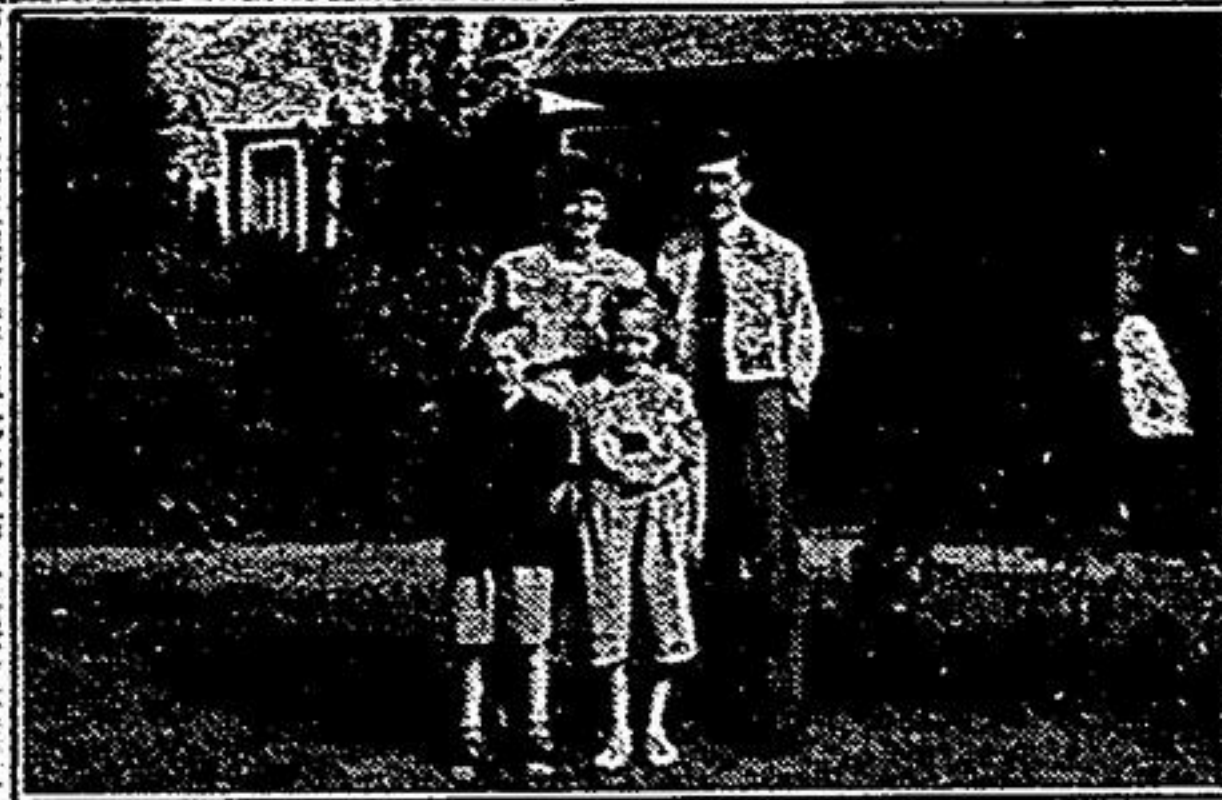
The interior of the inn is a real Dutch treat! The restaurant seats approximately 200, and there are 20 beds for overnight accommodation.

Tastefully decorated in a typical Dutch decor with antiques, pewter and Delft Blue, "De Witte Berken" (translated The White Birch) is a villa with atmosphere.

Yoke Bouwmeister, accompanied by her husband, recently visited the De Groots and spent a lovely day with them at their inn. Yoke reports that the family was very happy to hear news about Stouffville.

"They lead a very busy life, but they love this business," she said. To anyone travelling to Holland, Yoke highly recommends "De Witte Berken". The address is:

Fam. de Groot en Medewerkers.
Oost Ravenweg 8 8162 PJ Epe
The Netherlands
Tel.: 05780 - 12991



Homelife Coventry R.E. Inc.
472-2200



John Pollard
Sales Representative

With today's low, low interest rates:
Now is the time to buy and make your move.
Call John Pollard 472-2200



7 Thatchers Millway
Markham



220 Ivy Crescent
Stouffville



395 Hemlock Cres.
Stouffville



240 Geoffrey Cres.
Stouffville



Re/max County Town Realty Inc.
Fenelon Falls
1-705-887-5440 Toronto Line 686-7030

FOR MONEY IN YOUR POCKET AND BETTER HEALTH,
TAKE A LOOK AT COUNTRY LIVING



Pat Gillogly
Sales Rep.



COBOCONK TOP OF THE TRENT WATERWAYS
Cute as a button and sparkling clean. Great value, full basement, new well and septic. Deep lot. \$89,000.



CLOSE TO FENELON FALLS ON 5+ ACRES
3 bedroom 4 pc. bath separate dining room. Basement & double garage. Walk to water, school, bus at door. \$115,000.



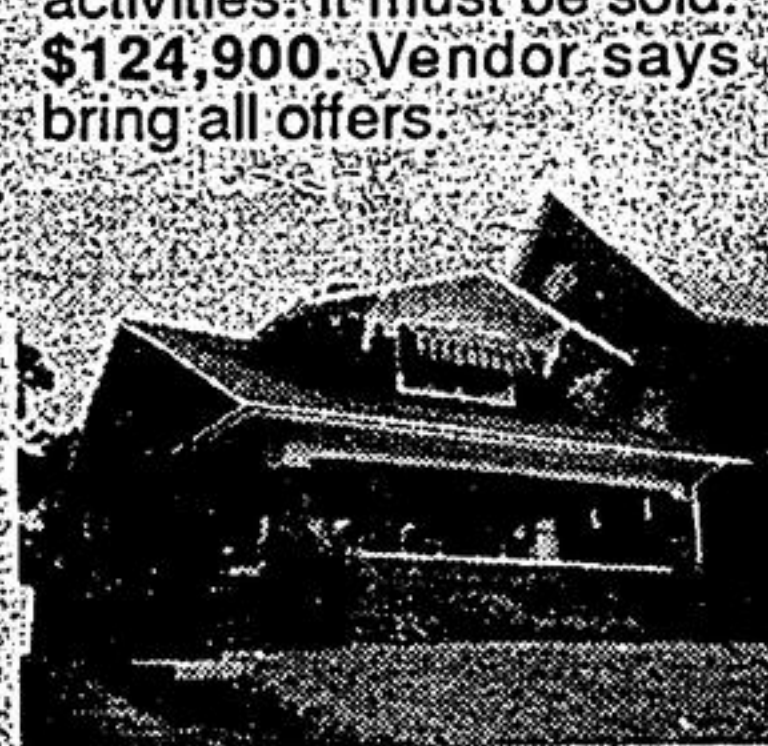
STURGEON POINT AREA - POWER OF SALE
Picture perfect 1 acre lot with 1500 sq. ft., 3 bedroom home, basement and garage, just steps to golf course and water activities. It must be sold. \$124,900. Vendor says bring all offers.



CAMERON LAKE WATERFRONT TRENT SYSTEM
Facing west, 3 bedrooms, super location with sand beach. \$158,000. Owner will hold mortgage with small down payment.



OVER 700 FT. FRONTAGE
On Hwy. 35 at Norland, 147 acres with commercial potential and 1200 sq. ft. home and garage. 9% vendor financing. \$235,000.



GO BACK TO TRADITION
In this 10 room brick home in immaculate condition, central location with great commercial potential. Vendor's health failing, must move. All offers will be considered. \$169,000. New roof '91.



FENELON COMMERCIAL BUILDING
Rental income supports the price. All on 2.87 acre with M1 + 1 zoning, 4000 sq. ft. open space over 20 ft. high with overhead doors + 46 x 25' show room. 3 apartments, 29 new rental storage units and lots of room to build more. Hwy. location. \$545,000.



BALSAM LAKE WATERFRONT HOME
For the executive and family. It's the perfect setting for gracious living and entertaining. Over 1700 sq. ft. on both levels. All on an acre lot with 120 ft. of excellent shoreline, facing south. \$585,000. Call me for more details.



DEVELOPER WANTED
For this beautiful 150 acre parcel of rolling land with a magnificent hardwood bush. Your imagination will run wild. Township and County planning encourages development for conference center, golf course, home sites etc. Property at the south end of Fenelon. \$350,000.

EXCELLENT ACCESS TO BALSAM LAKE
from this wooded lot at Rosedale \$39,900. Vendor will build to suit or trade for cottage on water in Haliburton.

EXCELLENT ACCESS TO CAMERON LAKE
from this wooded sloping 1/2 acre lot in Fenelon. \$64,900. Make an offer.

FENELON FALLS
4 serviced lots in prime residential area. \$59,900. All offers considered.

For information on these properties call Pat Gillogly, Sales Rep., 686-7030 or 1-705-887-5440



RESIDENTIAL REAL ESTATE

COUNTRY LANE REALTY LTD.

Hwy. 7A & High Street - Port Perry, Ont.
985-7351

Expect the Best



COUNTRY LIVING ON 40 ACRES

Large 1 1/2 storey family home with 5 bedrooms, 2 bathrooms, maintenance free exterior, vinyl clad windows throughout. Plus 40 x 52' steel clad workshop. Sunderland area, listed at \$259,500. Call 985-7351.



WATERFRONT WESTERLY EXPOSURE

Cape Cod Style Home-1980 sq. ft., main floor laundry-oak kitchen cabinetry, fireplace-3 bedrooms-2 1/2 baths-large lakefront lot-REDUCED TO \$199,900. Call 985-7351.



REDUCED TO \$119,900- POWER OF SALE

Beautiful, new 3 bedroom bungalow on 1/2 acre lot-main floor laundry-3 walkouts-large deck-great view of the Lake-needs some finishing-Call 985-7351.



GREENBANK VILLAGE

2 bedroom brick bungalow with attached garage-main floor laundry-eat-in kitchen-mature tree lot backing onto park area. Listed at \$134,500. Call 985-7351.

BEAUTIFUL ONE ACRE HARDWOOD LOT

\$59,900-building and septic permits available. For investment or to build your dream home-Call 985-7351.



REDUCED TO ONLY \$159,900

3 bedroom Viceroy home-located at the edge of Port Perry on a 1/2 acre lot overlooking open fields-view for miles-cathedral ceilings-open concept. A Pleasure to Show! Call 985-7351.

AFTER HOURS:

- Janelle Peters Res. 985-3927
- Bruce Peters Res. 985-3009
- Denise Kingma Res. 986-0611
- Anita Whitworth Res. 985-4193
- Steven Brouwer Res. 986-0687
- Gail Scala Res. 985-9395
- Keith Puckrin Res. 985-2489
- Ralph Fairman F.R.I. C.R.A. Res. 985-2160
- Winda Walsh Res. 986-4335
- Robin Parish Res. 705-439-2173
- Roy Corden Res. 985-9412
- Dianne Hooker Res. 985-2276

MEMBER OF THE OSHAWA & DISTRICT REAL ESTATE BOARD (MLS SERVICE)
A MEMBER OF THE SEARS FINANCIAL NETWORK



REDUCED TO \$299,000- POWER OF SALE, SUBMIT AN OFFER

10 acres-over 4000 sq. ft. of living area plus full walkout basement-home approximately 65% complete-located 7 miles from Uxbridge-Call 985-7351