

Councillor Sanders thanks community, supporters

Dear Editor,
 Serving one's community is a most rewarding activity. Working with a community such as we have developed in Whitchurch-Stouffville is indeed a great honor. I am extremely grateful to the

people of Ward 6 who allowed me the opportunity to serve them and to work with them for many years. I am also very appreciative of the support, assistance and co-operation provided to me by members of the Whitchurch-

Stouffville town staff, members of council and many other elected and appointed officials at all levels.

In particular, I especially thank my many supporters and campaign workers who gave so much

of their time over the last few weeks.

The local media, also, are to be congratulated in the democratic process. We are fortunate to have two papers, cable TV and many

high quality media people serving our town. We have a great town. Best wishes to the mayor and council.

Jim Sanders
 Former Ward 6 Councillor

CHATS plans growth, not reduction

Dear Editor,

Last week's article "Sanders Looks to Future" reported that Stouffville may lose its identity if CHATS (Community Home Assistance to Seniors) relocates its office and that seniors may not get the services they need. This article has unnecessarily upset our clients... your readers.

CHATS' priority is to serve seniors the best way we can. Our plans will improve service to clients. Homemaker services will be expanded to evening and weekend service; staff will be available to

respond to emergency service needs.

Yes, we are going to expand staff in a combined Stouffville-Markham office. The new location has not been established. We will keep the community informed as information is available. We believe that our plans will ensure that clients can call us and get an immediate and friendly response to their service requests. That is how we should evaluate the future success of CHATS in the Stouffville community.

Deborah Egan
 CHATS Executive Director

Youth centre column receives support

Dear Editor,

Yes, it's me again and no I'm not her to chew you out about how I think you're wrong about the youth centre.

I'm here to support your idea.

Yes, that's right.

The idea for the youth centre is a "cool" idea.

When the new town council is together they should think this over

more than once.

I hope the turnout in this is for the youth centre.

We (youth) have nothing to do in this town. This idea is one way to help.

I think this idea will go far.

For the volunteers ready to tackle a new project. Take this one down.

Brad Hainschwang
 Stouffville

Editor's Note: Mr. Hainschwang wrote The Tribune following an column that appeared in the summer. He berated the column's criticism of what teens did in their spare time. The letter writer was responding to the Nov. 6 column on a youth centre. Watch the Dec. 4 edition of The Tribune for a further development on this issue.

Grade school students have problems, too!

We've developed special programs for grade school students whose classroom performance is less than desired. They're designed to improve study skills, enhance motivation and deal with specific problems in any subject.

Individual or small group instruction by teachers specially trained and fully certified by the Ontario Ministry of Education.

For more information, call today.

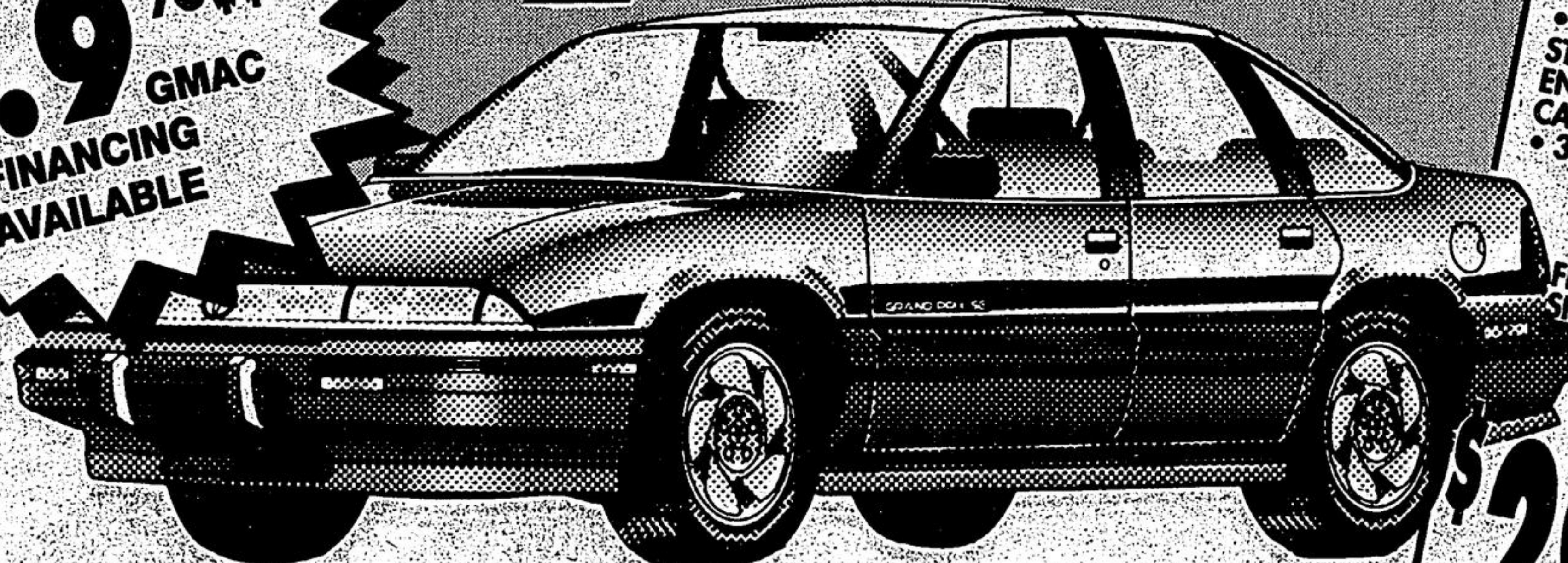


5293 Highway #7, Suite 203
 (at McCowan)
 Markham, Ontario L3P 1B8
 Telephone: 294-8757

Our record speaks for itself.

\$15,899*

2.9%***
 FINANCING
 AVAILABLE
 GMAC



EQUIPPED WITH

- AIR CONDITIONING
- 4 SPEED AUTOMATIC TRANS
- CRUISE CONTROL; TILT STEERING; ILLUMINATED ENTRY SYSTEM • AM/FM CASSETTE • PULSE WIPERS
- 3.1 LITRE V6 ENGINE
- 15" X 6" STYLED WHEELS
- FOG LIGHTS • DUAL MIRRORS • CARPETED FLOOR MATS • BODY SIDE MOULDINGS
- LAMP GROUP
- 45/55 SPLIT FRONT SEATS

\$299⁰⁰
 MONTH***
 PLUS TAXES

ONLY

9 1992 GRAND PRIX SEDAN

25 GRAND PRIX SEDANS LEFT AVAILABLE

AT THIS PRICE.

UNIONVILLE

- PONTIAC
- BUICK
- GMC

HWY. 7 at KENNEDY RD.
 UNIONVILLE

477-1666

"ON THE EDGE OF BIG CITY PRICES"

*Cash sale price, \$750 rebate assigned to dealer. Not available with 2.9% financing. Dealer freight of \$600 plus applicable taxes are extra.
 ***2.9% financing is available up to 12 months, O.A.C. no limit, example \$10,000.00 financed over 12 months will carry for \$846.48 per month, COB \$157.76
 ****Lease rate based on 48 months with 96,000 kms; additional at 6¢. First month lease payment and security deposit required. Subject to dealer freight of \$600, license plus all applicable taxes O.A.C.