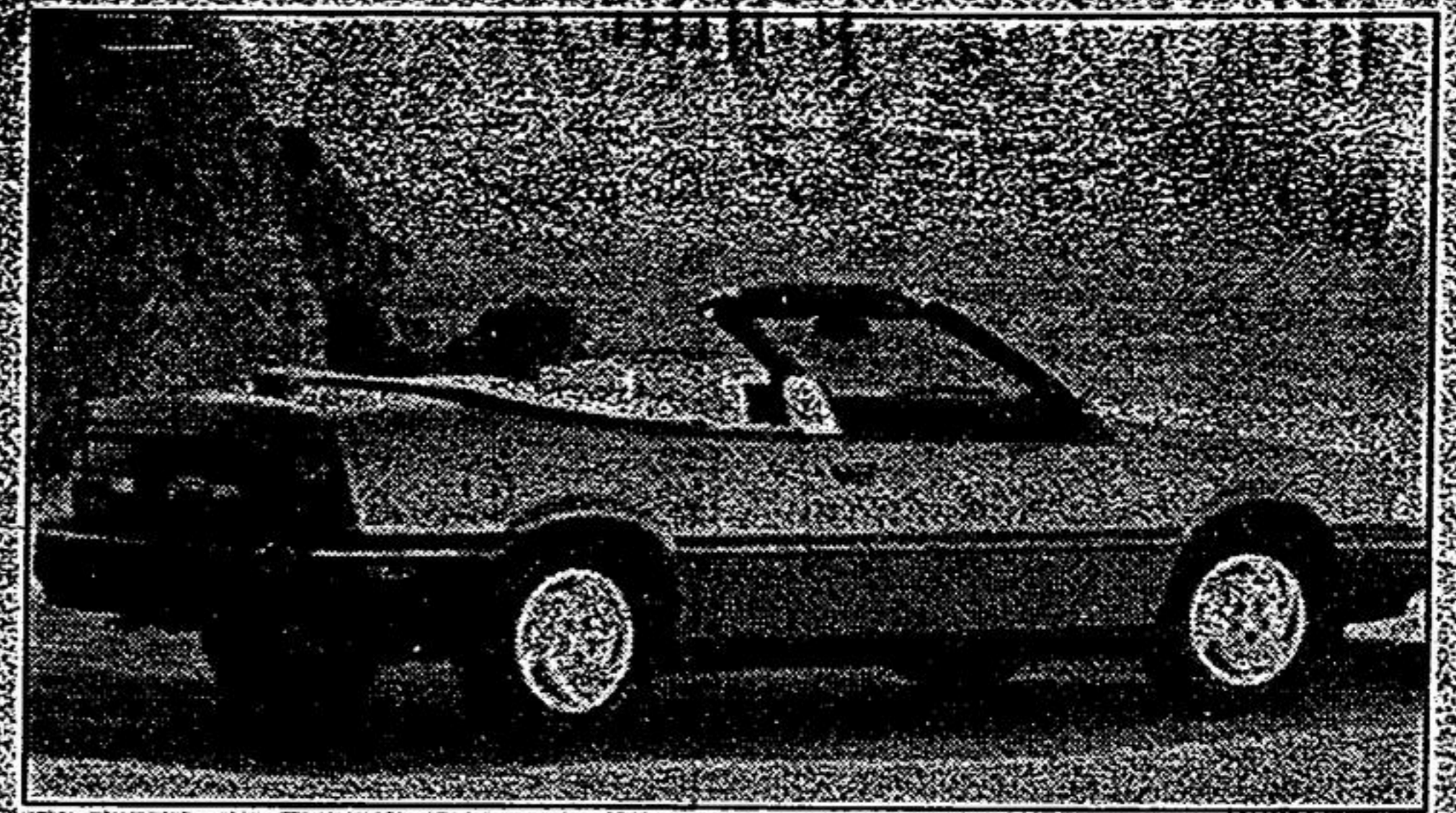




1992 TOYOTA CAMRY SEDAN: Quieter, more spacious and more comfortable, totally re-engineered and re-designed for 1992, the front wheel drive Camry is available with either an all new 2.2 litre 16 valve/twincam four cylinder engine producing 130 horsepower or a 24 valve/quadcam V6 engine producing 185 horsepower. Available in two levels, the '92 Camry features a standard driver-side airbag Supplemental Restraint System (SRS) and optional ABS (Antilock Braking System). The Camry is available with either a five speed overdrive manual or a four speed overdrive automatic transmission.



1992 CHEVROLET CAVALIER RS convertible features reclining front bucket seats in sport cloth.

## Cavalier, Chevrolet's best selling car line, is a top choice with first time new car buyers

The reasons for Cavalier's enduring popularity are many - low initial cost and low operating costs, sporty styling in coupes and convertibles for those who are young, as well as the young at heart, spaciousness in sedans and wagons for families especially with young children, and affordable V6 power.

For 1992, there are several reasons why Cavalier should continue its pace.

The new GM anti-lock brake system (ABS VI) is standard on every 1992 Cavalier. Similar to existing anti-lock systems, ABS VI senses when any of the four wheels start to lock and modulates the brake pressure through a special electronic controller, helping to minimize wheel lockup during braking. The ABS may shorten braking distances on some road surfaces, but more importantly, it helps the driver maintain steering control in a panic stop situation even on slippery roads. Invented by GM, ABS VI has fewer parts than the other ABS systems and it's

with a MacPherson strut coil-spring front suspension with a stabilizer bar. The rear suspension is a trailing arm design with a twist beam, conical coil springs and deflected disc shock absorbers. A rear stabilizer bar is included with the optional FE2 Sport Suspension on Cavalier RS. The Cavalier Z24's special suspension features front and rear stabilizer bars and gas charged rear shock absorbers.

Automatic power door locks are standard on all 1992 Cavaliers. Their operation is simple and automatic when the car is shifted into "drive" (automatic transmission) or reaches 13 KM/H (manual transmission), all doors lock automatically.

Cavalier VL and RS coupes, sedans and wagons feature cloth reclining front bucket seats with integral head restraints and cloth door trim inserts. The Cavalier RS convertible and the

Z24 coupe and convertible feature reclining front bucket seats in sport cloth. Vinyl interior trim is available as optional equipment on Cavalier RS and Z24 convertibles.

**The 1992 Cavalier line includes a full range of two door, four door and wagon models**

considerably less expensive without sacrificing performance.

In use, drivers will notice a reduction in the pedal pulsation normally associated with ABS - a direct result of the innovative closed-loop hydraulic strategy employed by ABS VI.

A new, more powerful 2.2 liter I4 with multi port fuel injection is standard on Cavalier VL and RS models. Rated at 110 HP, the new engine features multi-port fuel injection, a new intake manifold with a tuned runner for each cylinder and an integral fuel rail for the injectors. The integral fuel rail is a unique bottom feed design that permits the injectors to be packaged inside the rail, and allows the fuel to cool the entire injector, not just its internal components. The improved injector cooling provides additional benefits during hot starting.

A 3.1 liter V6 with multi-port fuel injection is standard on all Cavalier Z24 models, and optional in Cavalier RS convertibles and RS wagon models. Horsepower is 140 at 4200 RPM.

All 1992 Cavaliers are equipped

A 5 speed transmission is standard on all Cavalier models, except wagons. The 3 speed automatic is standard on all Cavalier wagons and options in all other models.

New bolt-on full wheel covers are standard on all Cavalier VL and RS models. These wheel covers with specific styling for each series, offer a fresh appearance and are designed to reduce the chance of wheel cover loss.

There are a total of nine exterior colours available in 1992 and base coat/clear coat paint is standard on all models. Silver or red accent striping is standard on Cavalier RS - the colour is determined by the body style and exterior paint.

The 1992 Cavalier line includes a full range of 2 door and 4 door and wagon models, from the economical value leader VL and sporty RS to the performance oriented Z24. The Cavalier Z24 convertible is back by popular demand after a two year absence.

Cavalier's success year after year is an obvious recognition of Chevrolet's traditional value.

**DAVE WOOD MAZDA**  
17365 YONGE ST. NEWMARKET  
895-5747 798-7877

**THE MOST TRUCK FOR YOUR BUCK!**  
**FROM \$7,992\***

\*In-stock units only. Plus P.D.I. FRT. taxes & lic. all incentives applied.  
**SERVICE & PARTS OPEN SATURDAYS**

**SHANAHAN** Newmarket  
Shanahan Ford Lincoln Mercury Sales  
567 DAVIS DR. IN NEWMARKET  
(Across from the Hospital)  
853-5000 798-4858

1992 GRAND MARQUIS

**FULLY EQUIPPED INCLUDING:**  
LS model  
dual power seats  
air conditioning  
handling package  
anti-lock braking system  
high level audio system  
leather trim  
4.6L EFI V8  
power windows/locks  
plus much, much more!

**LEASE FOR \$532\* PER MONTH**  
48 month lease, \$2000 down plus first & security deposit, plus taxes and license, O.A.C.

**NEW MARKET HONDA**  
17315 YONGE ST. NEWMARKET  
PHONE: 898-4500  
TORONTO: 798-7854  
**PRE-OWNED HONDAS**

91 ACCORD EX SEDAN - Blue, 25,000 km, Fully loaded. Balance of factory warranty. Stk: #26119  
90 PRELUDE 4WS Top of the line. Only 53,000 km. Silver. Nice & clean. Stk: #26111  
88 ACCORD EXI Blue 74,000 km. Leather seats. Fully loaded. Stk: #26118  
87 ACCORD H/B Auto, 88,000 km. Blue. Sharp looking car. Stk: #26077  
86 PRELUDE 5 speed, sunroof, red, fully reconditioned. Stk: #26109. SPECIAL \$6995  
**LEASE REPO**  
91 CHRYSLER STEALTH Lots of Power and fast. Only 30,000 km. Make an offer.

**LANTON BROS. LTD. USED CARS**  
135 DAVIS DRIVE IN NEWMARKET  
(Across from the Newmarket Plaza)  
898-4444

1990 GMC TRACKER 4X4 CONVERT 27 K. Stk. #8473. Price includes GST, factory warranty. **\$9600**

1988 HONDA ACCORD LX 4 DR. Stk. #8461. Price includes GST, (year warranty incl.) **\$9600**

**CERTIGARD CARROTHERS SERVICE CENTRE**  
15117 YONGE ST. AURORA  
727-1461

Complete Brake Service,  
Electronic Tune-ups,  
Tire Sales & Repairs,  
Exhaust Repairs,  
Computer Wheel Balancing,  
Cooling System Service,  
D.O.T. Inspections,  
Special 300 pt. Inspection,  
Repairs to all makes.  
**Full Serve Gas Bar**

**KING CITY MOTOR PRODUCTS LTD.**  
CHEVROLET OLDSMOBILE  
IN THE VILLAGE OF KING CITY  
TOLL FREE 1-800-461-1551 LOCAL 416-833-5301

**LEASE SPECIAL**

1991 TRACKER CONVERTIBLE 4 wheel drive. Demo - low kms.  
**\$249.99\*** PER MONTH  
48 mth. lease freight & PDI included. Plus taxes, lic. and \$1000 down. O.A.C.