



RE/MAX scugog realty limited
 144 QUEEN STREET, PORT PERRY
 independent member broker
985-4427 TOR. LINE: 428-1332
(18 OFFICES THROUGHOUT ONTARIO)



12-ACRE HOBBY FARM JUST LISTED

3 bedroom brick Century home, 30' x 50' bank barn, located 8 minutes east of Uxbridge. Won't last long at **\$249,000**. Contact Mark Puckrin*.



\$199,000

Upgraded custom home with numerous features: 3 + 2 bedrooms. Located 35 minutes N/E of Uxbridge on 1/2 acre lot near school, arena, store. Well worth a look if the drive fits your situation. Contact Mark Puckrin* for details.



REDUCED \$10,000

5 acre property with large modern 4 bedroom home, small barn, located 1/2 hour north east of Uxbridge. For complete details contact Mark Puckrin*.

CENTURY HOME, JUST LISTED!
 3 bedrooms, 2 bathrooms, main floor family room with fireplace, large private treed lot. Located 25 minutes N/E Uxbridge in rural community. **\$135,500**. Contact Mark Puckrin*.

GOOD FARMS AVAILABLE

85 acres, 12 minutes from Uxbridge excellent working land, thoroughly renovated home captures country flavour, renovated bank barn, good out buildings. Value that stands comparison at **\$359,000**.

100 acres, Century home with many recent upgrades, excellent bank barn, overlooks miles of country side, located 1/2 hour NE of Uxbridge. **\$369,000**.

78 acres, decent house and barn, 8 acres hardwood bush, balance in hay and pasture. Located 15 min. east of Port Perry. Ideal hobby farm. Vendor willing to hold mortgage. **\$279,000**.

Contact Mark Puckrin* for details
 705-357-3374

WATERFRONTS

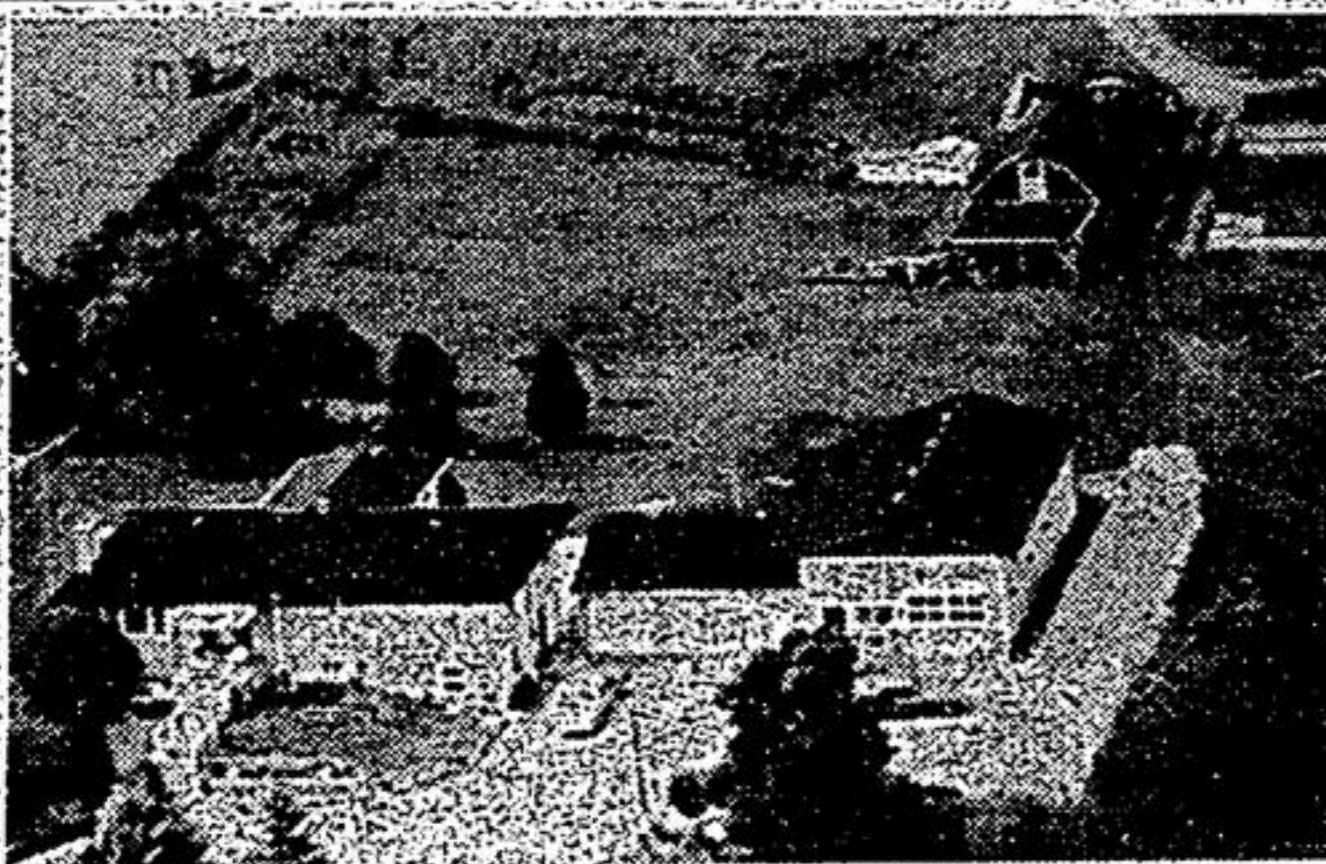
3 1/2 yr. old Viceroy on 3/4 acre lot 15 min. east of Uxbridge. Just listed. **\$208,000**. Year round waterfront cottage, very upgraded, small private lot, gravel beach reduced to sell at **\$149,900**. 10 min. east of Port Perry. 49 acre waterfront lot 1/2 hr. east of Uxbridge. **\$84,900**. Vendor can hold mortgage. Contact Mark Puckrin* for information.

MARK PUCKRIN*, Res. 705-357-3374

PRIVATE

5 minutes north east of Stouffville, 12.2 acres, 3 bedroom house plus 2 bedroom apartment, 3 car garage plus 24x48 workshop, plus barn.

Reduced to \$449,000
TORONTO PHONE
1-416-640-7641



Larry Olson
 Associate Broker
 640-2082



EXQUISITE ONE-HALF STOREY - OLD-STOUFFVILLE

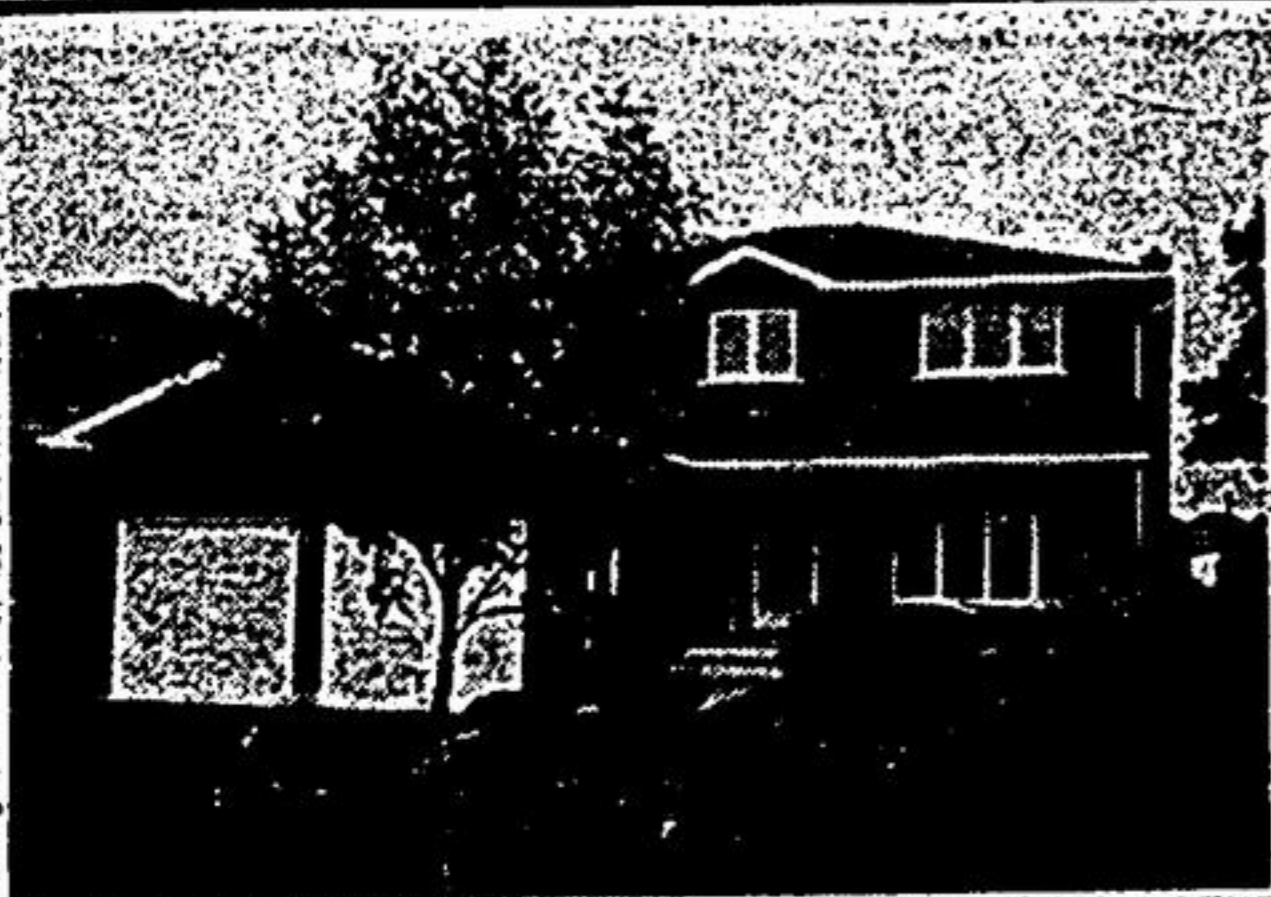
Just listed, price **\$209,900**, large lot, all brick hardwood french doors, Chestnut finishing, orig claw bath tub, 1-3pc, 1-2pc. Special in every way. Open house Thurs. Oct 31, 10:30 to 12:30 call now don't wait! **Larry Olson, Assoc. Broker, 640-2082**



Mary Evelyn, Sales Rep.

Professional Real Estate Services. Personalized to ensure that your purchase/sale is achieved with maximum satisfaction and minimal inconvenience.

Call: **Mary Evelyn, B.A. M.B.A.**
 off. 470-2002, pager 375-8264
 res. 946-1793



BACKS ONTO OPEN FIELDS NOW \$285,000

Fabulous Fairgate home approx. 2450 sq. ft., country kit w/o to cedar deck, spacious 4 brs master br. ensuite ceramics, central air quiet cul de sac location vendor relocating shows great!!! **Kim Reesor***

Gallo Real Estate Ltd.
 640-1200



The Great Pumpkin Mystery

Pumpkins started appearing on the doorsteps of Stouffville homes during the fog-shrouded hours of Saturday morning. Where did they come from? Mike Sherlock from Century 21 Keen Realty solved the mystery. He, along with Goldie Bear, had been out delivering one to every home in his service area as a Halloween surprise for the children.



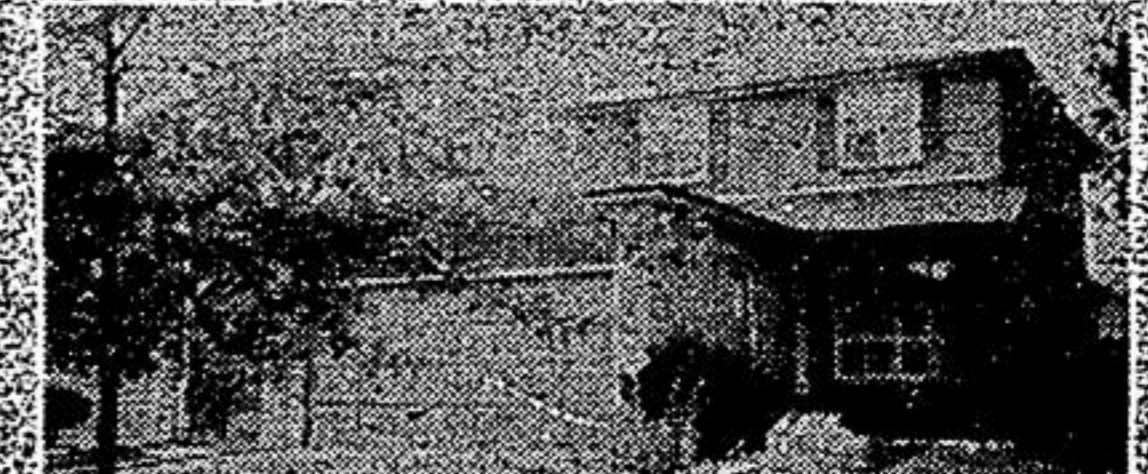
EVELYN MCGIVERY
 Sales Rep.

DON MILLS & EGLINTON

3 bedroom condo on the ravine, 3 appliances, neutral decor. Move-in condition. **\$145,888**. Try an offer. Call Evelyn McGivery, 477-5556. Red Carpet Avey Realty Inc. Realtor.



Sylvia Houghton
 Canada's Top Producer



I'M "S-P-E-C-I-A-L" on "S-P-R-A-G-G"

Approx. 1700 sq. ft. V. Court. V. 16' kitchen & almond cabinets. V. family room & firepl. V. 3 bedrooms, 3 baths, a "10" **\$267,000**. **Sylvia Houghton*, 294-6237, 471-2121**



\$478,000

YOUR DREAM COME TRUE!!!

V. 166' lot V. of Unionville
 V. 3100 sq. ft.
 V. Nanny quarters
 V. Main floor library
 V. Award winning kitchen
Sylvia Houghton*, 294-6237, 471-2121



\$293,000

"PERFECTION ON PRIME COURT"

V. Immaculate & perfect
 V. Ceramic entranceway & kitchen
 V. Sunken family room
 V. A "Botanical Garden"
Sylvia Houghton*, 294-6237, 471-2121



\$343,000

"BEST VALUE" U-N-I-O-N-V-I-L-L-E

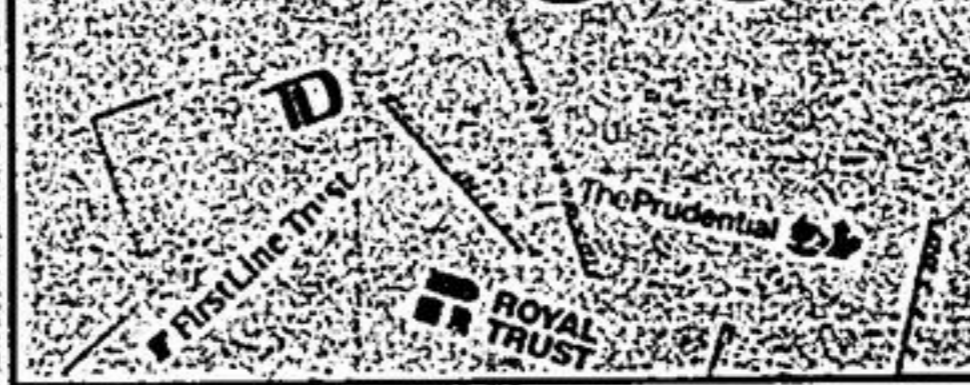
V. 25-22 sq. ft. "Great Gull"
 V. Centre hall plan
 V. huge kitchen & pine cabinets
 V. In Vogue decor
Sylvia Houghton*, 294-6237, 471-2121

LEASE OR LEASE TO OWN

4 bedroom home with in-law apt. in Markville Mall area. Low down payment.

470-0746
 (after 6 p.m.)

Pick a Mortgage



THE EQUITY CENTRE

Your Partner In The Mortgage Market

Your **Direct Line** to a Troop of Canada's Biggest Banks, Trust Companies and Financial Institutions.

- V. Renewals
- V. Switches
- V. 1st Mortgages
- V. 2nd Mortgages

472-8500

27 Main St., Markham N.
Markham, Hwy. 7.