

Showcase of Homes



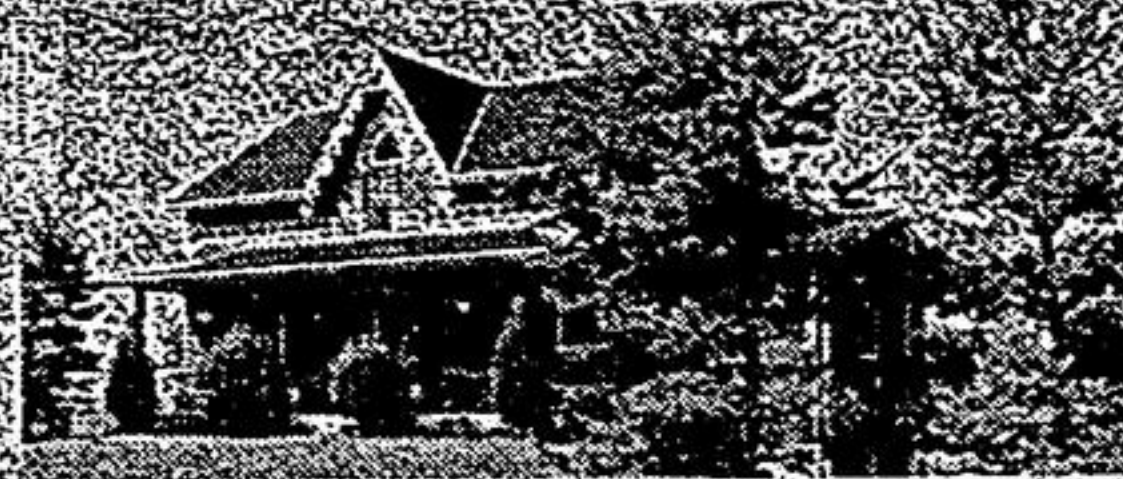
Shelagh Mulveney
Sales Representative
649-3336/649-3102



CLAREMONT



1st ad, 3 + 2 bedrooms, LR/DR w/fireplace, eat-in pine kitchen w/bay window, family room w/stove, large deck, mature lot. **\$284,900.**



3 bedrooms, main flr. family room, LR/DR w/fireplace, finished basement, large deck w/hot tub, creek, dbl. garage, 100' x 300', mature lot. **\$299,000.**

OPEN HOUSE SUNDAY JULY 28 1:00 - 4:00

Near Uxbridge, 1 acre lot & Century home. Drastically reduced to **\$169,900** for sacrifice sale, north on Durham 23 (Lakeridge Rd.) past Durham 21 approx 4 km to sign on east side. (South of Hwy 47) Karin Walsh



Scugog Realty Ltd. 510-1284, 852-6143



OPEN HOUSE JUST REDUCED \$269,500 176 ALDERWOOD ST., STOUFFVILLE

GREENPARK

SAT, SUN, JULY 27 & 28, 1 P.M. - 5 P.M.
4 bedroom, ceramic throughout, mahogany trim, greenhouse kitchen fireplace, central air, many more features.
If you are looking for a "Home" come & see 640-7931.

PRIVATE
5 minutes north east of Stouffville
12.2 acres, 3 bedroom house plus 2 bedroom apartment, 3 car garage plus 24' x 48' workshop, plus barn.

\$465,000
TORONTO PHONE
1-416-640-7641



LAKE SIMCOE

ISLAND COTTAGES

Direct lakefront, approx. 40 min. Markham, ferry service or private boat docking available. Land lease, no taxes, several for sale from **\$45,000 to \$125,000**

Carol Waddell Sales Rep.
Remax Georgina Realty Inc.
472-0639, 476-7706,
1-800-263-7435



**** REDUCED **** MARKHAM - 1 ACRE

- Highway #7 & McCowan
- Industrial/Commercial
- Allows automotive, outside storage
- 50% coverage includes 5,600 sq. ft. building
- Was \$1,350,000. Now \$975,000.

STEVE DOYLE
449-1710



RESIDENTIAL REAL ESTATE

COUNTRY LANE REALTY LTD.

Hwy 7A & High Street, Port Perry, Ont.
985-7351

Expect the Best



BLACKWATER - \$149,900

3 + 1 bedroom brick bungalow, eat-in kitchen - dining room - rec. room finished in pine - very private backyard. Call 985-7351.



SCHOOL'S OUT

Time to make your move... to this immaculate brick home offering air conditioning for the summer and 2 fireplaces for the winter - eat-in kitchen - enormous dining room - inviting private park-like setting. Listed at **\$219,900**. Call 985-7351.



REDUCED TO \$189,900 GREENBANK

Beautifully maintained, brick & aluminum bungalow, large front entrance, eat-in kitchen plus dining room with walkout to deck, 3 bedrooms, 1 1/2 baths professionally finished, large rec. room with pine wainscoting and pine entertainment centre, 4th bedroom down, large lot. Call 985-7351.



STEPS FROM THE LAKE STEPHENSON'S POINT PORT PERRY

Beautiful contemporary style, 3 bedroom bungalow, on a large tree lined lot, huge kitchen with oak cabinetry, cathedral ceiling and fireplace in living room, main floor laundry, wrap around deck. Just reduced to **\$259,900**. Call 985-7351.

JUST REDUCED TO \$289,000
4 miles north of Port Perry on Durham Rd. #2, mostly cleared with some bush and pond site, frontage 2 roads. Vendor will assist in financing. Call 985-7351.



\$439,000 - 95 ACRE FARM

5 bedrooms - family room with fireplace, modern country size kitchen with walkout to deck, huge master bedroom with ensuite, painted barns and out-buildings, located 4 miles north of Port Perry. Vendor will assist in financing. Call 985-7351.

BUILDING LOT - EXCELLENT VIEW

3 mi. from Port Perry. Listed at **\$109,000**. Vendor financing available. Call 985-7351.

AFTER HOURS

- | | |
|-------------------------------|-------------------|
| Janelle Peters | Res. 985-3927 |
| Bruce Peters | Res. 985-3009 |
| Denise Kingma | Res. 986-0611 |
| Anita Whitworth | Res. 985-4193 |
| Steven Brouwer | Res. 986-0687 |
| Gail Scala | Res. 985-9395 |
| Keith Puckrin | Res. 985-2489 |
| Ralph Fairman - F.R.I. C.R.A. | Res. 985-2160 |
| Winda Walsh | Res. 986-4335 |
| Robin Parish | Res. 705-439-2173 |
| Roy Corden | Res. 985-9412 |
| Dianne Hooker | Res. 985-2276 |

MEMBER OF THE OSHAWA & DISTRICT REAL ESTATE BOARD (MLS SERVICE)

A MEMBER OF THE SEARS FINANCIAL NETWORK

REDUCED TO \$150,000 POWER OF SALE

3 bedroom home with dining room, detached 20 x 40 garage, heated with 12 ft. door, Lge. lot. Call Marj Tripp, Associate Broker 416-985-7606, Century 21 Success Inc.

NEW HOME

All brick raised bungalow, Oak cabinetry, Lake access & super view. Must be seen at **\$155,000**. Call Marj Tripp, Assoc. Broker, 416-985-7606, Century 21 Success Inc.

LAKE SCUGOG COTTAGE

Private treed lot, 2 bdrm, 4 pc bath, lots of possibilities at **\$120,000**. Others also available. Call Marj Tripp, Assoc. Broker, 416-985-7606, Century 21 Success Inc.

STOUFFVILLE GARDENS RINGWOOD DRIVE

Business office
condominium for rent
Hwy 48/47 area,
brand new completely
finished, incl. air cond.,
bathroom & kitchenette,
700 sq. ft. \$700. month
(incl. taxes, maintenance &
insurance)
475-6192

RE/MAX IMPERIAL REALTY LTD., REALTOR 640-4960
37 SANDIFORD DR., STOUFFVILLE 473-1070
Sales Representative Associate Broker

**REDUCED OVER \$20,000
HOME ON THREE LOTS**

9TH LINE NORTH
Excellent potential land value. Now reduced to **\$194,000!!** Price includes immaculate 2 bdrm home with fabulous view in Stouffville. Also includes two lots for the future. Call Courtney Newmarch, 640-4960.

Courtney Newmarch

**REDUCED -
1 DAFOE ST. ZEPHYR**
Quality custom built home just 20 minutes north of Stouffville. 58 acres, 58 mins., double garage. Best value in the area and now reduced to **\$199,900**. Call today before this one is gone. 640-4960.

Courtney Newmarch

PERFECT STARTER
Charming 3 bdrm. home in heart of Stouffville. 75' x 112' lot. Huge kitchen. Immaculate home shows pride of ownership. Call today for your appointment to view this lovely home. Courtney Newmarch, 640-4960.

Courtney Newmarch

"INVESTMENT BARGAIN"
2 bedroom home on quiet street. Two lots: 50' x 125' and 66' x 224'. Excellent future potential. Rent now and cash in later. Only **\$155,000!!** Call Courtney Newmarch, 640-4960.

Courtney Newmarch

**LAND ASSEMBLY -
MARKHAM**
Excellent land development potential in heart of Markham. Price includes existing bungalows. Lot sizes start 1/2 an acre. Call Courtney Newmarch, 640-4960 for information package.