

**AFFORDABLE HOBBY FARM**  
6 1/2 acres south of Utica. It features a 3 bedroom house, 4 stall horse barn, pond & stream and only asking \$229,900. Robin Timmins\*, 985-0690.

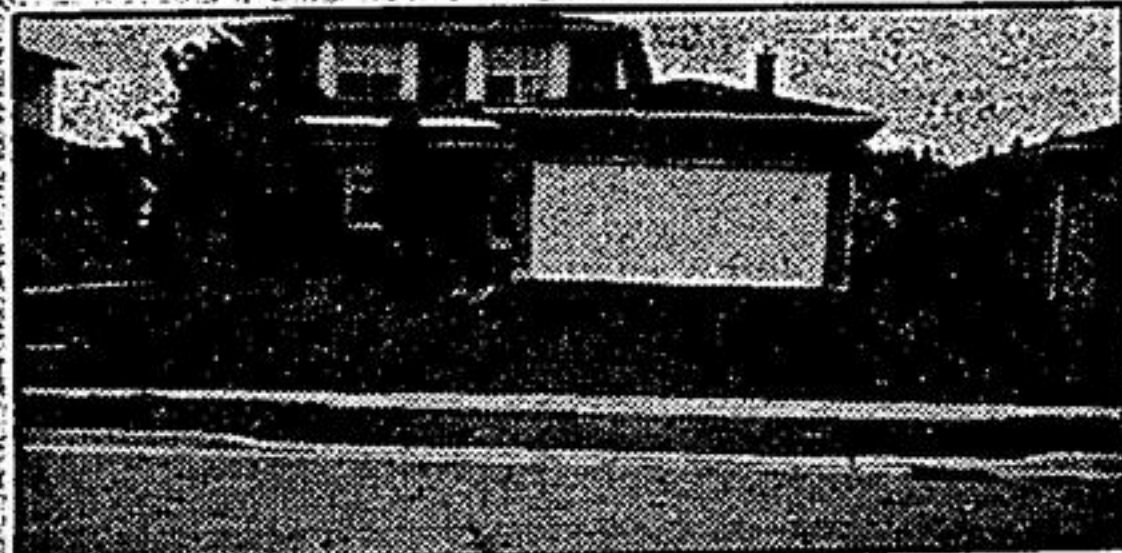


**EXCELLENT VALUE! \$124,900**  
2 bedroom starter home. Just steps from Lake Scugog. Home has been almost completely redone. Beautiful treed lot, paved drive. If your lifestyle includes boating & fishing, call me. Robin Timmins\*, 985-0690.

**POWER OF SALE!**  
32.94 acres, 3 ponds, well, hydro and very private. Just 10 minutes north of Port Perry. Just listed at \$142,900. Robin Timmins\* 985-0690



**\$199,900 - VALUE PLUS!!**  
West of Port Perry with Highway 7A frontage on 1.34 acres, 3 + 1 bdrms., 2 bathrooms, Jacuzzi, fireplace in formal dining room plus main floor laundry room & family room. Large office for the executive businessman with walk-out to a 30' x 80' workshop for the hobbyist or small family owned business that would need the highway exposure! Privately treed - A MUST-SEE!



**\$189,900 - PORT PERRY LOCATION**  
Beautifully decorated 7 1/2 yr. old 2 storey on full town water & sewer services. Features include 3 + 1 bdrms., finished basement with woodstove bricked setting, gas heat, main floor family room with walk-out to deck & inground pool (can be removed if wanted) + 3 bathrooms & dining room. Close to schools & town. Call Tammy Silverman\* 985-4427 or 985-0690



**SUPER BUY!**  
4 bdrms., 3 baths, main flr. fam. room with walkout to deck on huge lot in Blackstock. \$159,900.



**PRIDE OF OWNERSHIP!**  
Shows when you look at this 1650 sq. ft. bung. on Scugog Island, 3 bdrms., formal l.r. & d.r., lg. oak kitchen with walk out, 3/4 acre estate lot. \$247,500.

**POWER OF SALE - INDUSTRIAL LOT**  
Must be sold: 3.05 acre industrial lot in Port Perry. M2 zoning allows many uses. \$175,900. Adrienne Hanson\* Bus. 985-4427, Res. 985-2829



**RE/MAX scugog realty limited**

144 QUEEN STREET, PORT PERRY

Independent member broker

**985-4427 TOR. LINE: 428-1332**

184 OFFICES THROUGHOUT ONTARIO



3 bedroom bungalow & 28' x 60' garage on 1.6 acre treed lot, Hwy 7, Mañilla. Asking \$132,900



99 acre working farm, Sunderland area, sound 2 1/2 storey brick home, good barns and out-buildings. Listed \$345,000.

**PORT PERRY?**

For those of you who have never visited the Port Perry area, it is a town of about 5000 people located on the shores of Lake Scugog. The area was first settled in the late 1820's. I have been told many times by visitors it reminds them now of what Stouffville, Markham, Unionville were like 15 - 20 years ago. The downtown makes for a pleasurable stroll, complete with a park and pier at the end of the main street. Somewhat limited residential growth, no doubt, will ensure a stable community and maintain high property values for years to come. Port Perry is located a comfortable 45 minute drive N/E of Metro Toronto, due east of Bloomington Side Road. We offer a full range of country, town and waterfront properties. Direct inquiries to Mark Puckrin, active in the great Port Perry marketplace since 1988.

**SPACIOUS 2 STOREY**

3 bedrooms, 2 bathrooms, main floor family and laundry rooms, large new deck, pool, large lot located east of Sunderland within 1 hr.'s drive to Metro. \$132,900.

Mark Puckrin\* Res. 705-357-3374

**FARMS AND ACREAGES WITH HOMES**

- 85 acres excellent buildings, good working farm, \$419,000  
- 25 acres with rolling hardwood bush, cedar bush & pasture. Now \$259,000. Vendor looking for an offer.  
- 100 acres with brick Victorian house, bank barn, maple bush, private location, \$339,000.

**REDUCED FOR QUICK SALE!**

2 bedroom winterized cottage with canal access to Lake Scugog, 75' x 200' lot. \$104,900.



Mark Puckrin\*

**Call Mark at 985-4427 or 1-705-357-3374**

**LOTS OF ACREAGES AVAILABLE**

99' x 180' back lot with access to Lake Simcoe. \$32,900.

114' x 230' waterfront lot, Lake Scugog, just reduced to \$84,900.

0.92 acre lot 15 minutes N/E Uxbridge on Durham Rd. 23' high, well drained lot ideal for walkout basement, now \$67,000.

Rural 3/4 - 1 acre lots available within 20 minutes of Uxbridge from \$55,000 to \$57,000. Keep in mind that due to the Official (Land Use) Plan of Ontario in its present form, the number of rural lots allowed is limited and supply is dwindling. If you're interested, get while the getting's good.

43 acres, bush, stream, driveway in private high building site, 1/2 hr. drive N/E of Uxbridge, \$139,900.

48 acres, 2/3 bush, 1/3 pasture, 5 minutes east of Sunderland, \$115,000. In most cases with reasonable down payment. Vendors willing to hold mortgages. Call for complete details. Mark Puckrin\*, Res. 705-357-3374.



**ASSUMABLE MORTGAGE ONLY \$11,000 DOWN!**

Cute 2 bedroom, 1 1/2 storey home in small village. Low taxes & low heating costs, close to shopping! Maintenance free! Only \$129,900



**SCUGOG ISLAND - LAKE ACCESS!**

Large 3 + 1 bedroom sidesplit home, family room with fireplace & walkout to pool & patio. Large country lot in good area! Reduced to \$164,900.



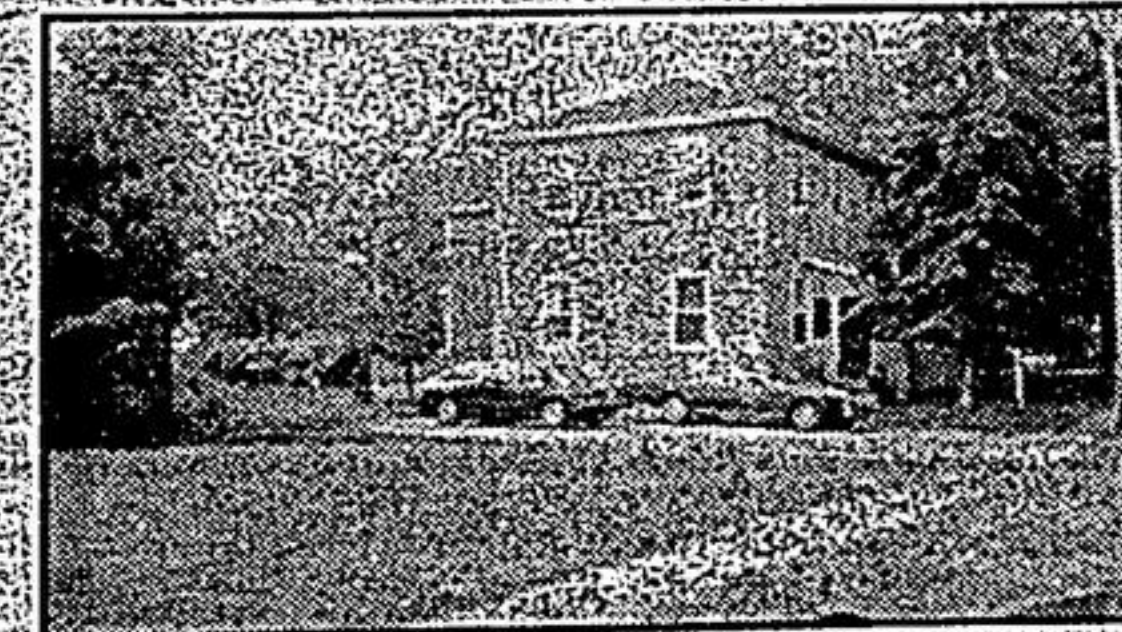
**ENJOY SUNSETS ON THE LAKE!**

From the huge deck of this large bungalow! Many great features, nestled in beautiful wooded lot, sand beach & exceptional area! Reduced to \$349,000. Call Valerie Eden\*, 985-4427.



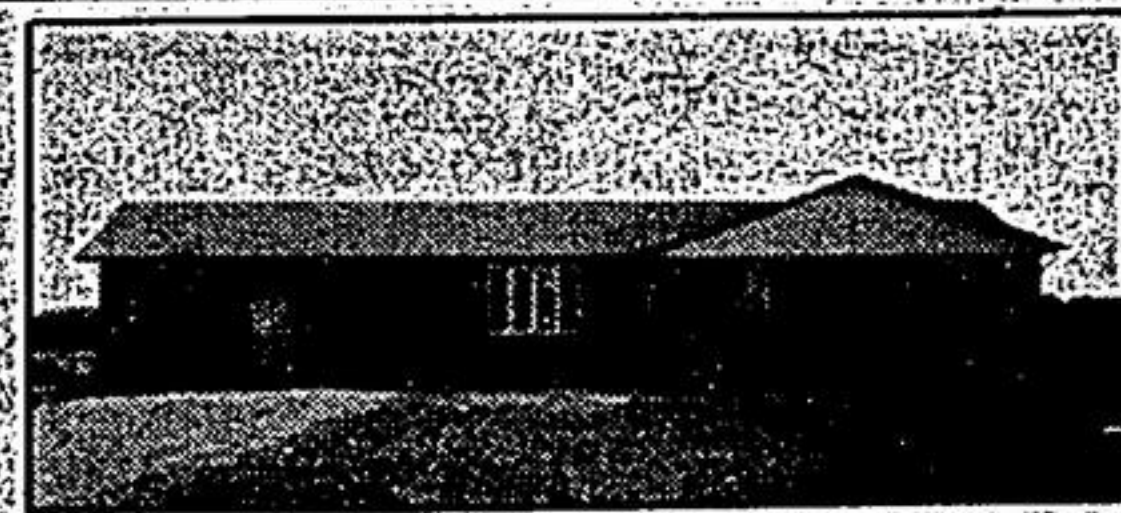
**FARM - 28 ACRES!**

Southeast Uxbridge, 5 bedrooms, Century brk home, barn, maple drive, family room with fireplace, see Lake Ontario. Asking \$344,900. Call Ken Middleton\* at 985-4427.



**INVESTMENT OPPORTUNITY**

C-6 zoning, legal non-conforming Triplex. All units self contained. Showing good return. \$259,900. Don Harper\* 985-3159.



**BEST OF EVERYTHING**

\$199,900

Immaculate 3 + 1 bedroom quality built family home in Seagrave boasts spacious rooms, oversized double garage, finished family room, on 160' x 200' lot backing on to green space & across from park, tennis court.



**VIEW LAKE**

Drive a little, save a lot more! 3 bedroom bungalow with full basement, 70' road frontage overlooking Lake Scugog. This truly is a perfect starter. \$98,500. Don Harper\*, 985-3159.



**CLASSIC COTTAGE PROPERTY - \$129,900**

Main cottage could be year round home, + 1 bedroom guest house, garage, storage shed, drilled well on gorgeous 1/2 acre treed & fenced lot at Scugog Point. Good lake access. Lynda Kendry\*, 985-4427.



**PORT PERRY STARTER**

2 bedroom newly renovated home situated on a large lot. Oversized garage / workshop. Move in condition. \$149,900. Don Harper\*, 985-3159.



**LEEWIND CONDOMINIUMS**

Offers 2 bedrooms, 2 baths, utility room, kit. & living room, 1259 sq. ft. plus attached garage. Situated on over 3 acres and on the shores of Lake Scugog. It has plenty to offer. Close to downtown. Just listed at \$204,900. Call Don Harper\* 985-3159.



**PRINCE ALBERT**

A beautiful view boasts this 4 bedroom family home, main floor family room with w/o to large deck. This plus a lot lot more!!! Offered at just \$229,900. You must compare. Don Harper\*, 985-3159.

Sales Representative Associate Broker