

Affordable Housing



OWN THIS LOVELY HOME!
REDUCED TO \$219,000

65x147 ravine lot & spacious bungalow w/ separate bsmt. apt. in older area of Markham for little more than land value. To see for yourself call **Murray Wagg** Sales rep. Bus 640-3131 Res: 640-1214.



GERRY MEHARG LTD.
 MEMBER BROKER



IF YOU'RE JUST STARTING OUT
 This bright, clean 3 bdrm. is a great place to end up! Super location - close to schools, shopping & TTC. And it backs on to park! It's a steal - only **\$199,900.**



Paul Tate
 CRS
 294-1372



INDUSTRIAL - COMMERCIAL - INVESTMENT

T.A. Connell Real Estate Limited

1033 McNicoll Avenue, Scarborough, Ontario M1W 3W6
 (416) 497-1011 FAX: 497-8979

FOR LEASE M.L.S.

- 1012 sq. ft. - Fronts on Midland \$6.75 ft. net. Sublet to Feb. 28, 1993.
- 1620 sq. ft. - West Beaver Creek - \$5.50 ft. net. Sublet to Jan. 31, 1992 - Sandwich Shop use now.
- 5199 sq. ft. - 2 dock doors - 40% office - \$5.75 ft. Sublet to Nov. 14, 1993. West Beaver.
- 1310 sq. ft. - Drive in door - Woodbine/John \$818.75 mo. Sublet to Aug. 30, 1993 - 3 mos. free net rent.
- 140 Bentley Dr., 10,300 sq. ft. - 20% office. 4.75 ft. net. 2 drive & 1 truck door. Upscale interiors
- 250 Shields Crt. - 2108, 4216 & 6324 sq. ft. \$6.50 ft. net. Glass precast bldg. - A/C offices.
- 5736 Finch Ave. E. - Great exposure! 1270, 5246 & 14949 sq. ft. - Good rates.

"130 & 160 KONRAD CRES."

Woodbine/14th Ave

2359' to 9218' sq. ft. \$6.00 ft., 15% office. Drive & truck-level doors, new complex.

"ROYAL CREST BUSINESS CENTRE"

Warden/14th Avenue

909 to 2000 sq. ft., 100% office, upscale building. Some free rent.

Carole Bell - Anne Connell - Jill George 497-1011

FOR SALE REDUCED TO \$695,000

M.L.S.



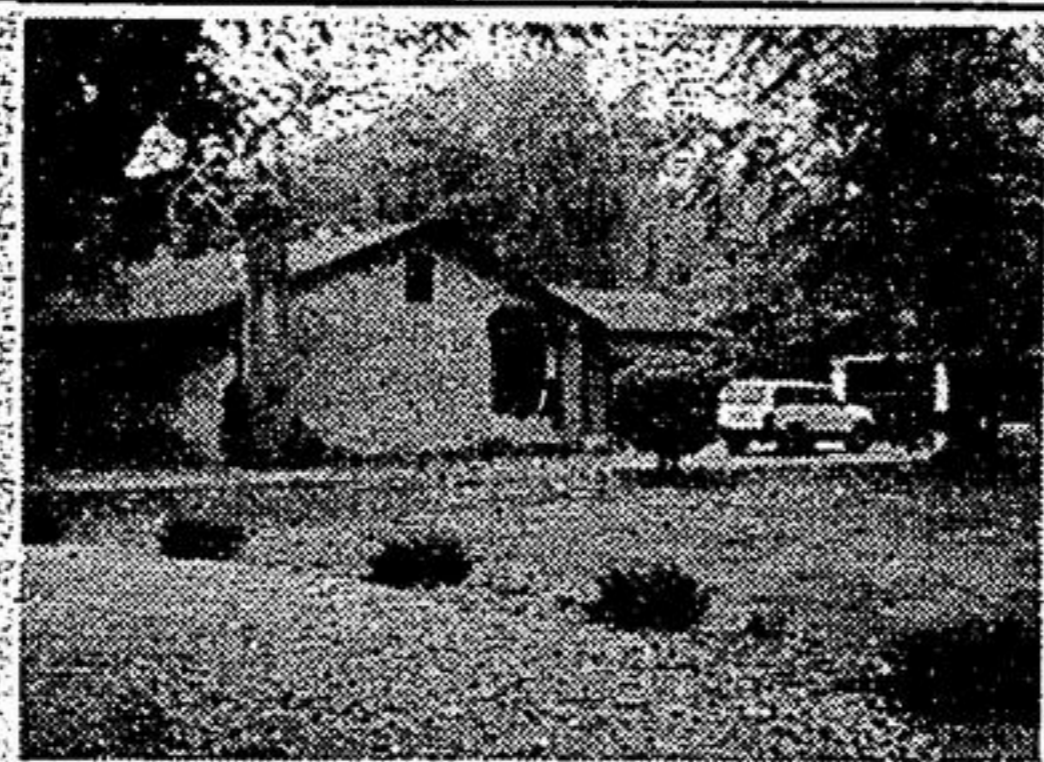
Totally renovated Century building.
 51 Main Street Markham N.

OPEN HOUSE - TUESDAY, NOVEMBER 6, 1990
 11:00 A.M. TO 1 P.M.

CAROLE BELL OR JILL GEORGE
T.A. CONNELL REAL ESTATE LIMITED 497-1011

BELIEVE IT OR NOT 1 ACRE LOT IN STOUFFVILLE

A chance to live in town yet a country property, up to 200' frontage, only few left out of 25 lots, town water, bldg. restrictions, 7 mi. to Markham. Very rare opportunity from **\$239,900.**



CLASS OF ITS OWN - \$249,900.

Picture perfect on this mini-estate 1/2 acre, brick bungalow, cedar hedging, red iron fencing, stunning Hollywood kitchen with built-ins galore, ing. pool, 24 x 36 insul/hd. garage (furnace) with own central vac, gorgeous decor. Only minutes to Stouffville. Just listed. P.S. even has TV satellite dish.

Remax Markville Realty Ltd.
 471-6600



Jim Payne
 Sales Rep.
 471-6600
 640-1768

ROLL BACK THE TIME!

Stouffville - 60 yr. brick detached 2 storey, wood trim galore. 3 bedroom, w/o off 2nd floor, hardwood floors, high ceilings, craftsmanship quality. In town location @ **\$207,900.**



Diane Blackburn
 Sales Rep.
 471-6600
 24 hr. pager



Susan Higgins
 Sales Rep.
 471-6600
 24 hr. pager



A GREAT FAMILY HOME WITH ALL THE GADGETS. PLUS, A PREMIUM PIE-SHAPED LOT!!

✓ Front window ✓ Front porch ✓ Interlocking walkway ✓ Upgraded broadloom ✓ Main floor fam. rm. ✓ Regal entryway ✓ Master ensuite bath ✓ Walk-in closet ✓ Central air ✓ Central vac ✓ Built-in bookcases ✓ Multi-car driveway ✓ Asking **\$249,900.**

TOWN HOME \$168,500 "A BEAUTY"

Cathedral ceiling, sep. dining room, 3 bedrooms, main floor family room w/o to private patio, parquet floors, appliances. Just move in!

Remax Markville Realty Ltd.
 471-6600

FOR SALE BY AUCTION

WED., NOV. 7 - 1:30 P.M. COMMERCIAL REAL ESTATE AUCTION at 248 Scugog St. Hwy. 7A in PORT PERRY. Zoned C4 large 100' frontage X 162' deep, 2 storey office bldg., 3 offices upstairs, reception area & 4 offices downstairs also computer room. Shown by appointment. For zoning details or flyer call **ORVAL McLEAN AUCTIONS (705) 324-2783 LINDSAY** or 1-800-461-6499.

SAT. NOV. 10 - 3 P.M. MORTGAGE SALE REAL ESTATE AUCTION of commercial property at 64 Russell St. W., LINDSAY. Zoned RC1 commercial - residential lot 62 x 115 with 2 storey brick office building. Extensively renovated in 1989 with new wiring, plumbing, insulation; presently 4 office stes. with 2 pc. washrooms. **IDEAL** for offices, retail store, boutiques, lawyer, dentist, accountant, doctors or income property. 7 parking spaces, excellent downtown location on busy street. Terms: property selling as is subject to reserve bid: \$5000. at sale, balance 30 days or approved purchaser could assume 1st mortgage. Vendor will hold 2nd mortgage with no interest or payments for 1 year. You could take this over for about \$25,000. View early to arrange financing. Open house SAT. NOV. 3, 11 to 3 and from 11 a.m. sale day. Phone (705) 324-2783 **ORVAL** or **BARRY McLEAN**, Auctioneers.

ROYAL LEPAGE

AURORA



FIELDSTONE COUNTRY HOUSE
\$595,000. Located just south of Uxbridge on quiet winding road. 3-1/2 treed acres with stream. Enjoy the 3 stone fireplaces, large spacious principal rooms, 4 bdrms., 4 baths. **Joan MacDougall, 773-6340.**

*Sales Representative
ROYAL LEPAGE REAL ESTATE SERVICES LTD.



CLASSIC CENTRE HALL

\$554,900. 2 superb treed acres on quiet cul de sac. Minutes to 404. Maple floors, marble faced fireplaces. French doors enhance the country atmosphere in this 2765 sq. ft. home. **Joan MacDougall, 773-6340.**



SMALL TOWN LIVING

\$190,000. High on a hill with fenced country garden. Perfect spot for young families. Bay windowed kitchen, rec. room, 3 bdrms., 1-1/2 baths. Mt. Albert, 15 mins. to 404. **Joan MacDougall, 773-6340.**