

RE/MAX® IMPERIAL REALTY LTD., REALTOR **640-4960** *Have the Crowd!*
 37 SANDIFORD DR., STOUFFVILLE • Sales Representative • Associate Broker



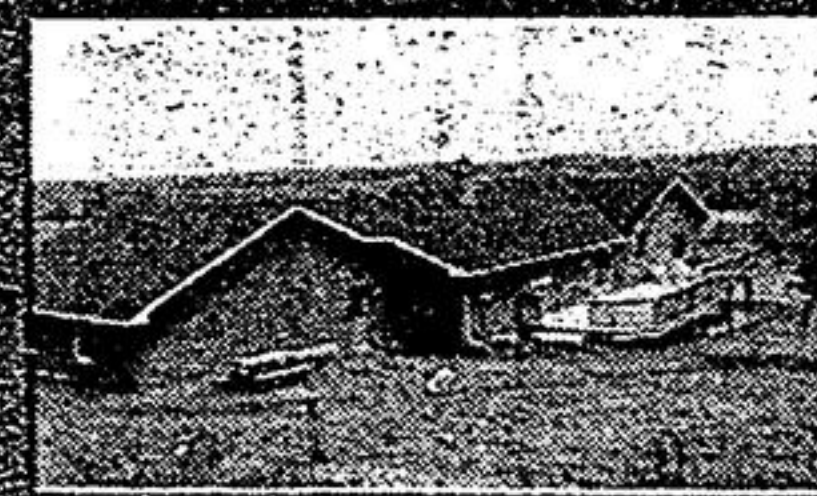
INVESTING
BALLANTRAE
JESSE THOMSON RD.
 \$689,000

Fab 3600 sq. ft. on an acre on forested 4.4 acre lot! Gracious front porch spans entrance. Multiple fireplaces. 2nd fl. laundry. Gourmet kitchen. French dr. w/o to deck. Master bdrm. features 4 pc. wash. with jacuzzi and w/o to deck. Nestled in the Vivian Forest region, wildlife abounds! A triple car garage, separate quarters, plus much more. This space is too small to list! Call it's just what you've always wanted! Call Anne McLean 640-4960.



GORGEOUS VICTORIAN
STYLING

On over 2 one acre lot backing on permanently protected lands with mature trees. The home features an open concept kitchen and family room. Custom designed brick fireplace. 2 1/2 baths. The attached 3 car carriage house features a terrific loft. Great for hobby room, office, entertainment or what have you. The stream along the property rear makes a great picnic area. View this soon! Call Earl Elson 640-4960, res. 985-7190.



CUSTOM BRICK
BUNGALOW ON THE
HILL!!

Approx. 3/4 of an acre. 2500 square feet walk out basement, walk out from kitchen & master bedroom. 2 sided fireplace, whirlpool, triple garage. Canac kitchen listed at \$349,900. It's a beauty!! Call Sherry Hayes 640-4960/399-2672.



BRAND NEW
STOUFFVILLE
 2800 sq. ft. fresh paint, front porch, granite, oak, vinyl, double garage, finished top floor, hardwood floors, finished \$319,900. Call Anne McLean 640-4960.



IF YOU ARE THINKING
 buying a home or trying to sell yours, call us for a free consultation and appraisal. Properties are moving. Garry or Trish 640-4960.



EARL ELSON
 ASSOC. BROKER



ALAN ELSON
 SALES REP.

STOUFFVILLE AREA
 1 acre building lot close to park, adjoining open fields, gas, hydro, water available. Build at your convenience call Al or Earl Elson 640-4960.

BETTER BUYS IN
BALLANTRAE!!

1-3 bdrm. br. bung. 1/2 A. lot \$274,900.

2-3 bdrm. br. bung. 1/2A. lot \$284,900.

3-2 bdrm. br. bung. 80' x 99' lot \$189,900.



10 ACRES

3 bdrm. home only 2 yrs. old. 7 stall barn on shop. Petition moveable. Some mature bush, rest open with paddocks. Call Alan Elson 640-4960.



10 ACRES

2800 sq. ft. home, custom built quality south of Uxbridge. Approx. 8000 Christmas trees planted plus workshop storage. Call Alan Elson 640-4960.



WOW!! WAS \$299,900
NOW \$219,900 WHAT A BUY!!!
 1/2 of an acre, 30' x 40' workshop with lot. Immaculate 3 bedroom brick bungalow, hardwood floors, fireplace, w/o to deck. First bid at \$219,900. Call to view Sherry Hayes 640-4960/399-2672 (West of Uxbridge).



\$139,000!

Last week was \$147,000! This lovely upgraded home on a country lot is priced to sell! N.O.W! Call Garry or Trish Knott 640-4960.



4 LIST \$299,900 SOLD \$299,000
 Call now Don Muir 640-4960.

RE/MAX®
OMEGA REALTY LTD.
 898-1211 773-9335
 473-2701

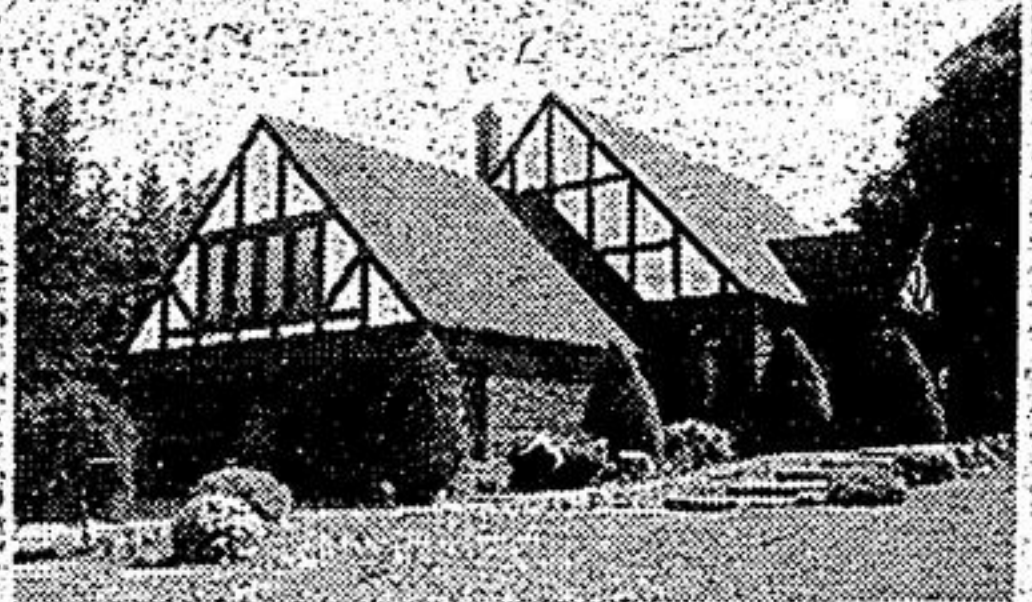
JOHN GREEN
 SALES REP.

VALERIE SCHOENROCK
 SALES REP.



BEAUTIFUL SETTING ON 1/2
ACRE \$169,900

Mt. Albert, good solid home, 3 plus bedrooms, treed lot.



A TOUCH OF CLASS \$399,000

Spectacular home, soaring cathedral ceilings, fully equipped gourmet kitchen with Jennair, double whirlpool, 2 fireplaces, family room overlooks living & dining room. Finished basement. Sprinkler system, satellite dish.



FOR THE EXECUTIVE \$399,000

Prestige home in Sharon, lots of extras and upgrades, 4 bdrms., whirlpool in master, 1/2 acre lot.



A STEAL FOR \$359,900

Quality plus; Scarlet O'hara staircase, 4 bdrms., separate dining, w/o basement, whirlpool & much more.

For information on the above properties call John Green, Sales Rep. or Valerie Schoenrack, Sales Rep., 898-1211 or 773-9335.

FAMILY TRUST CORPORATION REALTOR

The Witches & Warlocks
 at
Family Trust
Stouffville and Uxbridge

Are up to their old tricks again

Halloween contest for the best dressed house (Exterior)

To enter your home, call 640-2082 or 552-9781 by Oct. 29/90

REDUCED \$100,000!! REDUCED UNIONVILLE EXECUTIVE WAS \$569,000 NOW \$469,000

Absolutely gorgeous 3200 sq. ft. of luxury. 4 bedrooms, 3 bathrooms, 6 piece ensuite, library, open concept family room with brick fireplace & w/o to 37' deck. Huge sunlit kitchen & breakfast area. Beautiful courtyard. Professionally landscaped. Child safe crescent. Steps to all amenities. Open house every weekend 1-5 p.m. Vendor says sell. For more information call Ina Williams, Sales Rep., 470-8570, 479-9853.

Homelife Guardian Real Estate Ltd.

PHILIP MIHOREAN & ASSOCIATES LTD.

NEWMARKET NEW OFFICES
\$3.00 Sq. Ft. Gross
 Choose 8000 sq. ft. finished or 3000 sq. ft. finished to suit.
 Near Hwy. 404.
 Call Mr. Rosner 477-1777
 Philip Mihorean & Assoc.

RE/MAX

YORK GROUP REALTY INC. REALTOR

LAST CHANCE TO BUY THIS 48+ ACRE HORSE FARM 10 MINS. FROM HWY. #404
\$1,500,000 • \$1,399,000 • \$999,000
NOW \$799,999

OPEN HOUSE FOR AGENTS THURSDAY, OCT. 25 11 A.M. - 2 P.M.

PUBLIC OPEN HOUSE SUNDAY OCT. 28 1 P.M. - 4 P.M.

Picturesque setting large 4 car detached garage plus huge loft and storage. Large century barn with 6 large box stalls + staff quarters. Refurbished 2400 sq. ft. Century home.
 Directions: Hwy. 404 to Davis Drive east to Woodbine north on Woodbine to Mt. Albert (signed East to Conc. 7 to signs)
 Call: Marion Rafferty, Associate Broker
 Office: 773-6163
 Res: 1-416-727-6980
 Pager: 1-800-263-2019 ID 114

