

RE/MAX IMPERIAL REALTY LTD., REALTOR **640-4960**
 37 SANDIFORD DR., STOUFFVILLE *Sales Representative



Sherry Hayes
Sales Rep.
640-4960
399-2672

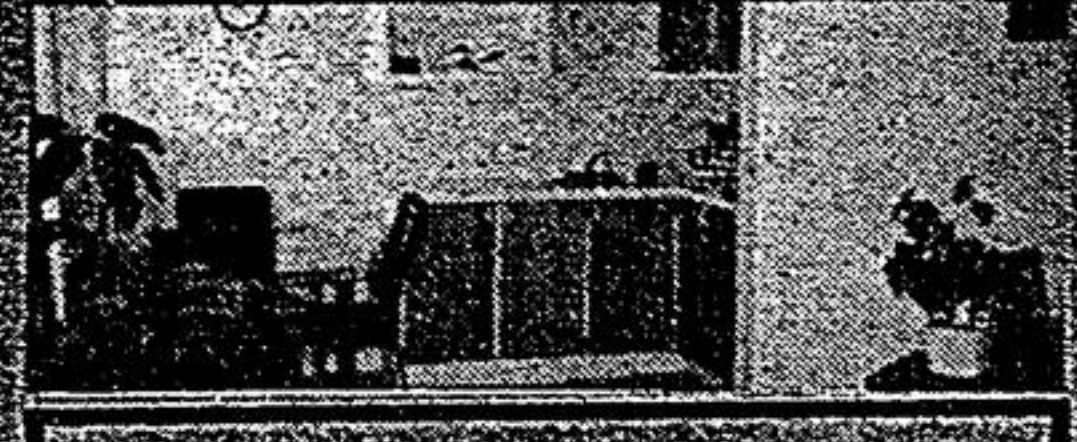
VENDORS SAY SELL! SELL! SELL!!!



IT DOESN'T GET ANY BETTER FOR \$259,900!!!!
 *Challenges comparison!!!
 *Views for miles
 *Inground pool *2 fireplaces
YOU SHOULD SEE THE SOLARIUM!!!



LISTED AT \$152,000



LISTED AT \$134,900

* 40' X 150' LOT * Includes a cottage *Whitchurch-Stouffville * Listed at \$104,900



PREMIUM LOT

In Stouffville
 *Ceramics, hardwood flrs.
 *Spacious w/o kitchen
 *Security system
A MUST SEE

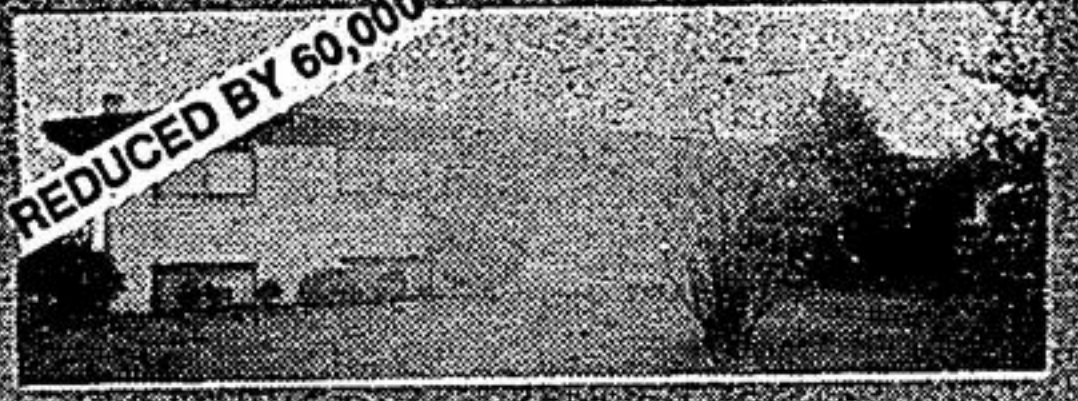
THESE VENDORS SAID SELL! SELL!

THINKING OF SELLING????? SHERRY HAYES, Sales Rep., may be reached at 640-4960 or just leave a message at 399-2672 and your call will be returned A.S.A.P.



VIVIAN SIDE ROAD!!

Just west of Hwy. 48
 over 2 acres
 *w/o basement
 *2 kitchens



NOW \$229,000

*Inground pool
 *1 acre * 200 ft front
 *West of Uxbridge
 *Cathedral ceilings
 *Fireplace, rec. rm



NOW \$239,900

*30 x 40'
 *extremely well maintained
 *bungalow * 1-28 acres
 *Hardwood floors * w/o dining room
 *Fireplace



NOW LISTED \$429,900

*1 acre * custom brick reproduction
 *w/o basement, hardwood flrs.
 *French doors, skylights, Jacuzzi
INCREDIBLE OPPORTUNITY AT THIS PRICE!



2.72 ACRES - NOW ONLY \$399,900

***WE WANT AN OFFER!!!!**
 *gorgeous custom built home
 *birch kitchen cupboards
 *w/o from kitchen and basement
 *finished basement! *Stouffville area

FOR INFORMATION ON THE ABOVE PROPERTIES, SPEAK TO SHERRY HAYES, SALES REP. AT 399-2672/640-4960



HOUSE ON THE PRAIRIE
 10 acre 3 bedroom, 2 yr. old, walk out basement, barn, paddocks, pasture, some bush. Come and have a look. Call Alan Elson*, 640-4960.



EARL ELSON ASSOC. BKR.
ALAN ELSON SALES REP.
STOUFFVILLE AREA \$159,900
 They saved the best for last! 1 ac building lot, open fields, Toronto phone line, gas, water, hydro, paved street. Super for walk out basement. Call Earl Elson** or Alan Elson* 640-4960.

SEAGRAVE
 3 bedroom home, steel workshop on 1 ac lot, great view of the Lake. Paved road access and closing flexible. Call Earl* today.

BUILDING LOTS
 2 available, adjoining, Uxbridge area, 3/4 acre size permits available. Great investment. Call Earl Elson*, 640-4960, Res. 985-7190.

4 BEDROOM
 In town, full services. Only \$209,000. 10-3/4 mortgage.

ENTREPRENEURS Take over the business* presently operating at a profit, small investment!
HARDWOOD BUSH 8 acres Stouffville. Call Earl Elson*, 640-4960, Res. 985-7190.

*Sales Representative
 **Associate Broker



BUNGALOW!!
 Large mature lot on quiet street. 2+ bdrm, all brick with finished basement. In-law potential! \$225,000. Patricia Knott*, 640-4960.



Serving The Haliburton Highlands
1-705-457-3696



WAS \$159,900. NOW \$139,000
 Approx. 1-1/2 hrs. drive from Markham. Head Lake (Norland), cottage. John & Mary Hincks*



COTTAGE WITH LOTS OF SIZZLE!
 Haliburton Lake. Southern exposure and sand beach. Reduced for quick sale. \$129,450. Robert Heinze*/Sharon Lynch*



WAS \$149,000 NOW \$144,500
 Approx. 2 hrs. drive from Richmond Hill, Big Glamor Lake, cottage. John & Mary Hincks*



IS PARADISE LOST?
 Not in Haliburton. \$129,000. Buys a 3 bed. cottage with sauna & 320 ft. of lakefront! Peter Epps*



WAS \$134,900, NOW \$119,000
 Approx. 1-3/4 hrs. drive from Newmarket, 3 br. bungalow on 10 acres. John & Mary Hincks*



TIRED OF LIVING!
 Renew yourself in this 2 bedroom house, across the road from the river, giving access to 2 lakes; the price? A low, low \$119,900. Bill Smith*

- WOODED ACREAGE**
- \$13,000 10 acres, Bobcaygeon Road
 - \$16,500 1.6 acres, Hwy. #503
 - \$27,500 6 acres, Davis Lk. Rd.
 - \$27,500 5 acres, Davis Lk. Rd.
 - \$89,900 Lakefront on 310' on 10 acres. John & Mary Hincks*
 - \$69,900 Reduced!!! 204 Feet of shoreline, completely treed lot, only one cottage past this lot for privacy and quiet. Year round for 4 season enjoyment. Robert Heinze*/Sharon Lynch*
 - \$109,900 Tranquility 166' waterfront & well kept, winterized cottage. Dorothy MacKenzie-Payne*
 - \$134,450 Love at first sight! 125' sand beach with 3 bdrm. cottage, boathouse/garage & more. Fullfill your dreams. Sharon Lynch*/Robert Heinze*
 - \$89,900 Quiet, quiet, quiet. Cabin with 200+ feet on small jewel of a lake. Year round road. Just reduced. Robert Heinze*/Sharon Lynch*

HUNTERS TAKE NOTE! 10 acres on paved road adjoining 2500 acres of Crown Land at only \$28,000 or 47 acres at \$37,000. Peter Epps.

HUNTING SEASON IS COMING! -10 acres on water \$69,900. 100 acres next to Crown Land \$69,900. 6 acres near Crown Land & numerous lakes \$29,500. Dorothy MacKenzie-Payne*

LOTS IN THE CITY TOO HIGH! We have 2 left \$24,900. and \$26,500. Peter Epps.*

1-705-457-3696