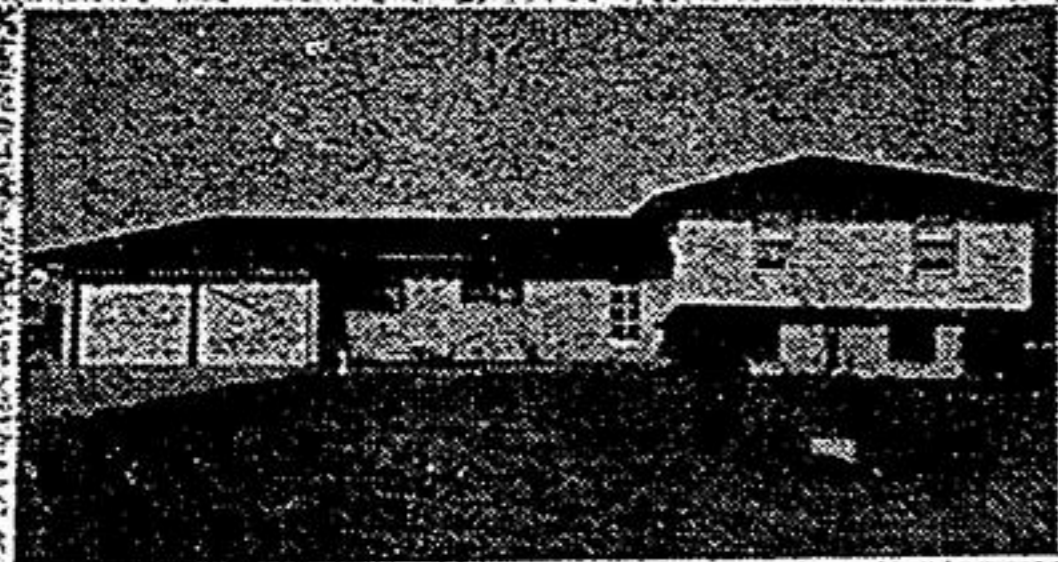




985-8041 - 139 QUEEN ST., UNIT 2, PORT PERRY



OPEN HOUSE SUNDAY JULY 22
1:30 - 3:30 PM.

Hobby farm, 10 acres with 6 stall horse barn, 4 bdrm. sidesplit home. Living rm. and dining rm. overlooking family rm. with wall to wall fireplace. Master bdrm. with 3 pc. ensuite. Inground pool. 11% mortgage. Listed at \$334,900.
Your hostess: Marj Tripp
Directions: Port Perry Durham Rd. 2 North to County Rd. 28 East to Rd. 16 and South 1/2 mile.



APPLE VALLEY PORT PERRY \$182,900 AND MUST BE SOLD
3 bdrms., separate dining rm., 3 baths. Full finished basement. See it today. Bargain priced.

NEW 3 BEDROOM
Brick bungalow, dining room w/walkout to deck, beautiful large oak kitchen, oak railings throughout. Family room and attached garage. Spectacular view of the lake and registered lake access.

WATERFRONT COTTAGE \$154,900
Good sand beach suitable for 4 season weekends. Excellent condition throughout. On 4 ft cement perimeter wall. Best cottage buy in area. Call today!

WATERFRONT HOME 114 FT. ON THE WATER
Three spacious bedrooms, kitchen, living room and dining room combo., 1 1/2 baths. Full basement with rec. room garage. Privacy plus at \$189,900.

HORSE FARM
1/2 mile training stone dust track. Indoor horse pool, 32' radius. Three barns three bedroom brick home. County Rd. 28 Mariposa Twp. Frontage. Inquire today for more details.

FOR ANY OF THE ABOVE ADS CALL MARJ TRIPP SALES REP. AT 985-8041 OR 985-7606 RES.

MORTGAGE CENTRE
FirstLine

SHOP AND COMPARE...

*Competitive Rates
*NO Brokerage Fee
*NO Appraisal Fee
*To Qualified Purchasers

940-6007

GEORGE MILLER FINANCIAL SERVICES INC.

AN INDEPENDENT MEMBER OF THE FIRST LINE MORTGAGE NETWORK



300 HIGHWAY 47
GOODWOOD
640-2400



\$226,000

4 bdrm., main flr. fam. rm., 64' lot, desirable Stouffville neighbourhood. Flexible possession. Let's discuss creative financing options. John Larkin, Broker, 640-2400.



RELAX!

Casual lifestyle can be enjoyed year round in this home. Vaulted ceilings. Spacious liv. rm., country kitchen, 3 bdrms. & den, 2 baths. Beach access. Easy commuting via 404. Call Lynda Sargeant, Sales Rep., 640-2400, 294-5070 (Res.).



A member of the TRILON group

10 BROCK ST. E. UXBRIDGE



WAGNER LAKE - DURHAM RD. 23
3 bdrm. stone/alum., 3 walkouts, beautiful country property, deeded access. \$214,000. Call Valerie Harbour* 852-6118 Tor. 294-6067 Res. 985-0076.

\$229,900 LEASKDALE

3 bdrm. sidesplit, eat-in kit., walkout, double garage on approx. 1 acre. High, landscaped lot. Call Fred Wilson* 852-6118 Tor. 294-6067 Res. 852-7481.

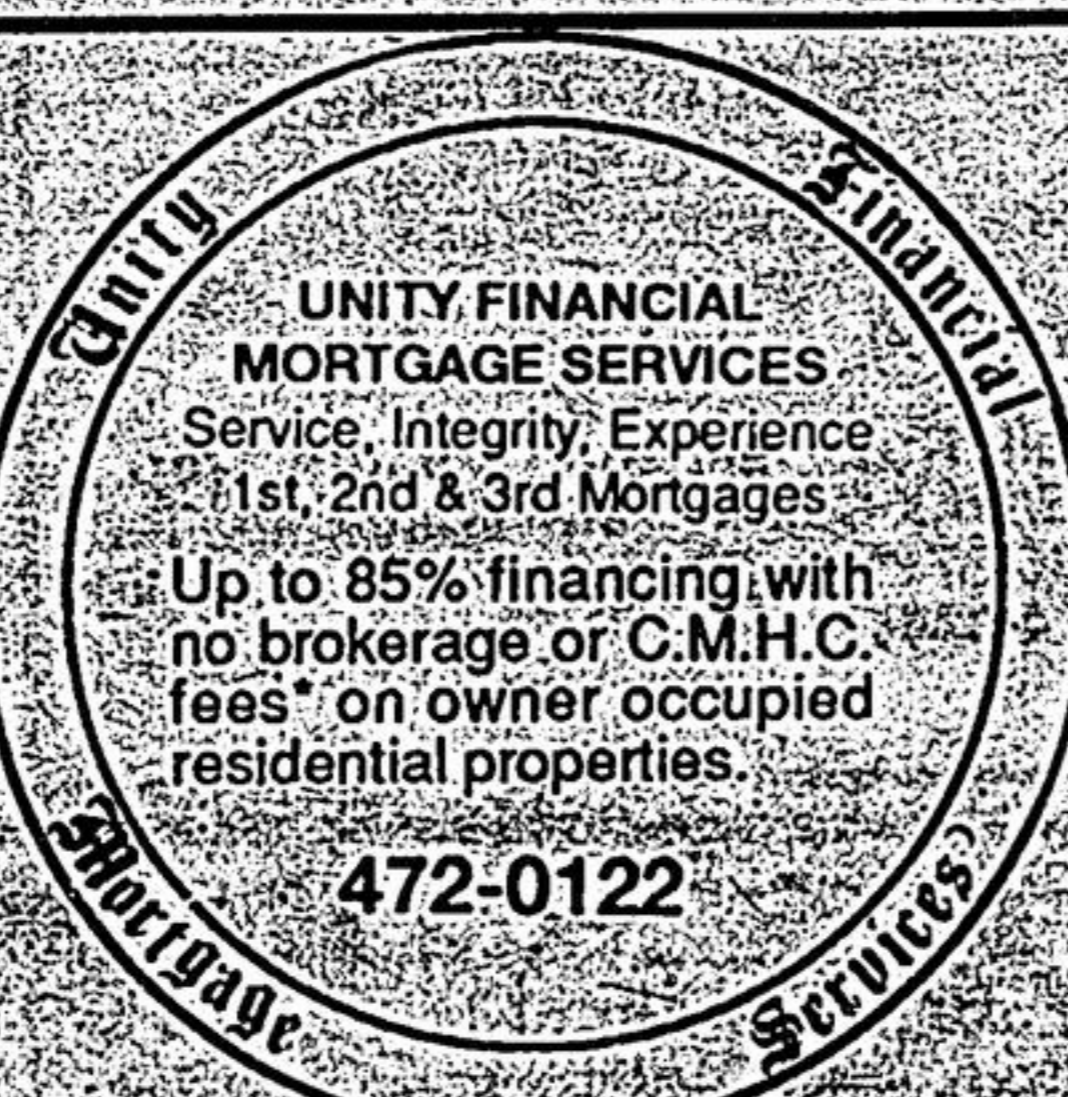
MOVE IN ANYTIME!

\$239,000 Ever popular Tammy model with many upgrades, privacy fencing. Call Lea Bauder* 852-6118 Tor. 294-6067 Res. 852-3419.

LICENSED ABATTOIR

\$850,000 Thriving, fully equipped business on over 1 acre in the town of Uxbridge, paved road frontage & town water. Call Merv Degeer* 852-6118 Tor. 294-6067 Res. 473-2973.

*SALES REPRESENTATIVE
ROYAL LEPAGE REAL ESTATE SERVICES LTD.



37 Main Street North, Suite 205A
Markham, Ontario L3P 1X4

*Not all may qualify



HOMELIFE CAMPION REAL ESTATE LTD. 640-2225
18 Main St. W., Stouffville
(beside Town Hall)



COUNTRY LIVING WEST OF UXBRIDGE

2 bdrm. bungalow, workshop, large lot, List \$179,900. To view call Margaret* or Audra Goeree* res. 642-1575 or bus 640-2225



98 ACRES UXBRIDGE

2 bedroom bungalow, gardener's paradise, great value list \$189,900.

25 ACRES

2 minutes west of Port Perry, unlimited potential, list \$850,000. V.T.B.

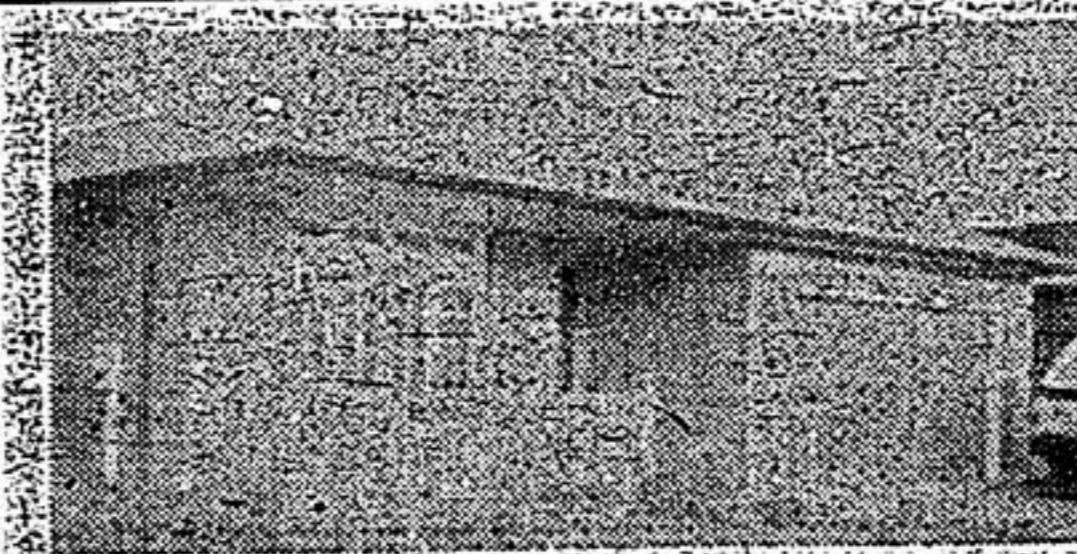


MARG GOEREE



AUDRA GOEREE

For information on above properties call Marg or Audra Goeree, Sales Reps. 640-2225



VISIT THIS "TAMMY"

- central air
- central vac
- intercom
- privacy fence
- 2x6 construction
- fireplace & 3 piece R/I in basement
- immediate possession
- offered at \$229,500
- call Marion Gibson at 852-7946 for viewing



JUST LISTED SANDFORD

Custom built rancher, open concept, 3 large bedrooms, ensuite, walkout, double garage, almost 1 acre, must be seen only \$299,000. Call Shirley Stephenson 640-2225

LAKE SIMCOE WATERFRONT

820 ft. waterfront with over 900 ft. paved road frontage, 13 acres zoned development (ideal estate lots, townhouses, marina complex etc.) Private \$1,495,000 or best offer - will consider trade

(416) 640-8797 (days)
(416) 895-5360 (evgs.)



Sinikka Fitz-Gerald
Sales Rep.
642-2126

CENTURY HOMES FOR YOUR ANTIQUES - UXBRIDGE AREA

3 bdrm. brick Victorian \$236,900. 4 bdrm. circa 1850 + 4 ac. + barns \$222,900. To view these country homes, ask for Sinikka Fitz-Gerald 852-9781, 642-2126.



GRANDMA'S HOUSE - YESTERDAY'S CHARM \$174,900

Victorian beauty - 3 bdrms., updated kit., centre hall plan, outstanding woodwork 5 min. outside Cannington.



EXECUTIVE LIVING IN UDORA AREA \$264,900

Buy of the summer - luxurious 4 bdrm. home on 69 ac. Custom oak kit., ensuite with whirlpool - less than 1 yr. new.

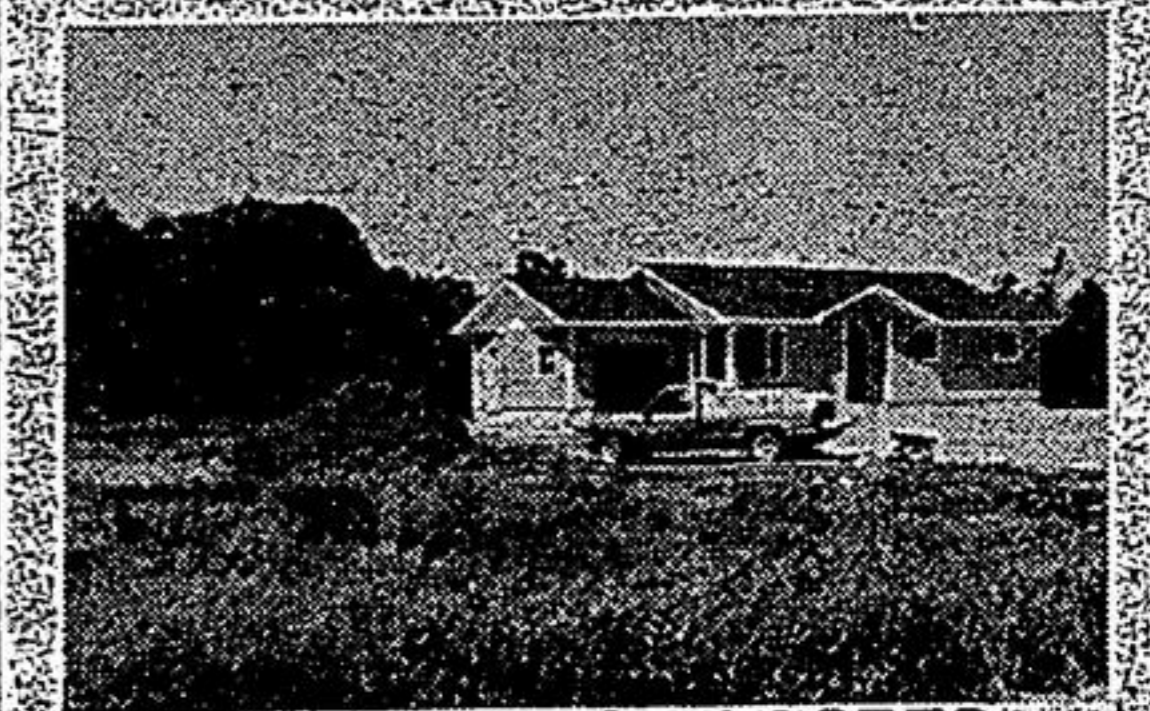
scugog realty limited
independent member broker

144 Queen St.
Port Perry
Office: 985-4427



ESTATE SALE, WATERFRONT

Just listed and priced for fast sale, 3 bdrm. year-round cottage, 10 minutes from Port Perry. Excellent buildings and lot. Vendor wants cash sale. Listed \$189,900. Vendor prefers to take back 1st mortgage up to \$150,000 at 12% for 1 yr. Contact Mark Puckrin, sales rep. 416-985-4427 or Res. 705-357-3374.



NEW HOME ON 4 ACRES \$189,900!

Within 1/2 hour of Uxbridge, 3 bdrm., 2 bath, bungalow, garage, Maple Grove, cedars, pond site. Vendor will assist with financing. Contact Mark Puckrin, sales rep. 416-985-4427 or Res. 705-357-3374.

RURAL BUILDING LOTS

All located within 1/2 hour of Uxbridge. Many with vendor take back mortgages at low rates. Good selection, from \$59,500. Call Mark Puckrin, sales rep. 416-985-4427 or Res. 705-357-3374.

