

Stouffville Tribune

VOL. 102 NO. 22

Metroland Community Newspaper

Wednesday, May 30, 1990

32 Pages

50 cents

Truck traffic hazardous says Mayor

TRACY KIBBLE
Staff Reporter

A decision to transport truck loads of clay for dump-lining at the Keele Valley Landfill Site expansion will cause a number of local problems, says Whitchurch-Stouffville Mayor Fran Sainsbury. York Region Council voted to truck in the clay last week instead of using what is already on the site, after Vaughan Mayor Lorna Jackson complained the pit left from the removed clay would be turned into another pit and set the stage for a future expansion request.

And although Mayor Sainsbury says she can appreciate Vaughan's concerns that Keele Valley is getting too large, she says the move to truck the clay in will be costly and dangerous.

Metro Toronto will pay for 600 truck trips a day back and forth from Gormley Aggregates at Warden Avenue south of Bloomington that will take nearly half a year to complete, Mayor Sainsbury says.

The 26-mile route will take trucks loaded with clay across Bloomington to Yonge Street, up Yonge through Oak Ridges, across King City Sideroad on Keele, through Maple to Major Mackenzie Drive, the mayor says.

But she has concerns the many heavy trucks will damage the newly surfaced Bloomington Road stretch.

"(The region) just paid \$875,000 in 1989 to resurface the road and 600 more truck trips a day will cause the road to deteriorate that much sooner," she maintains.

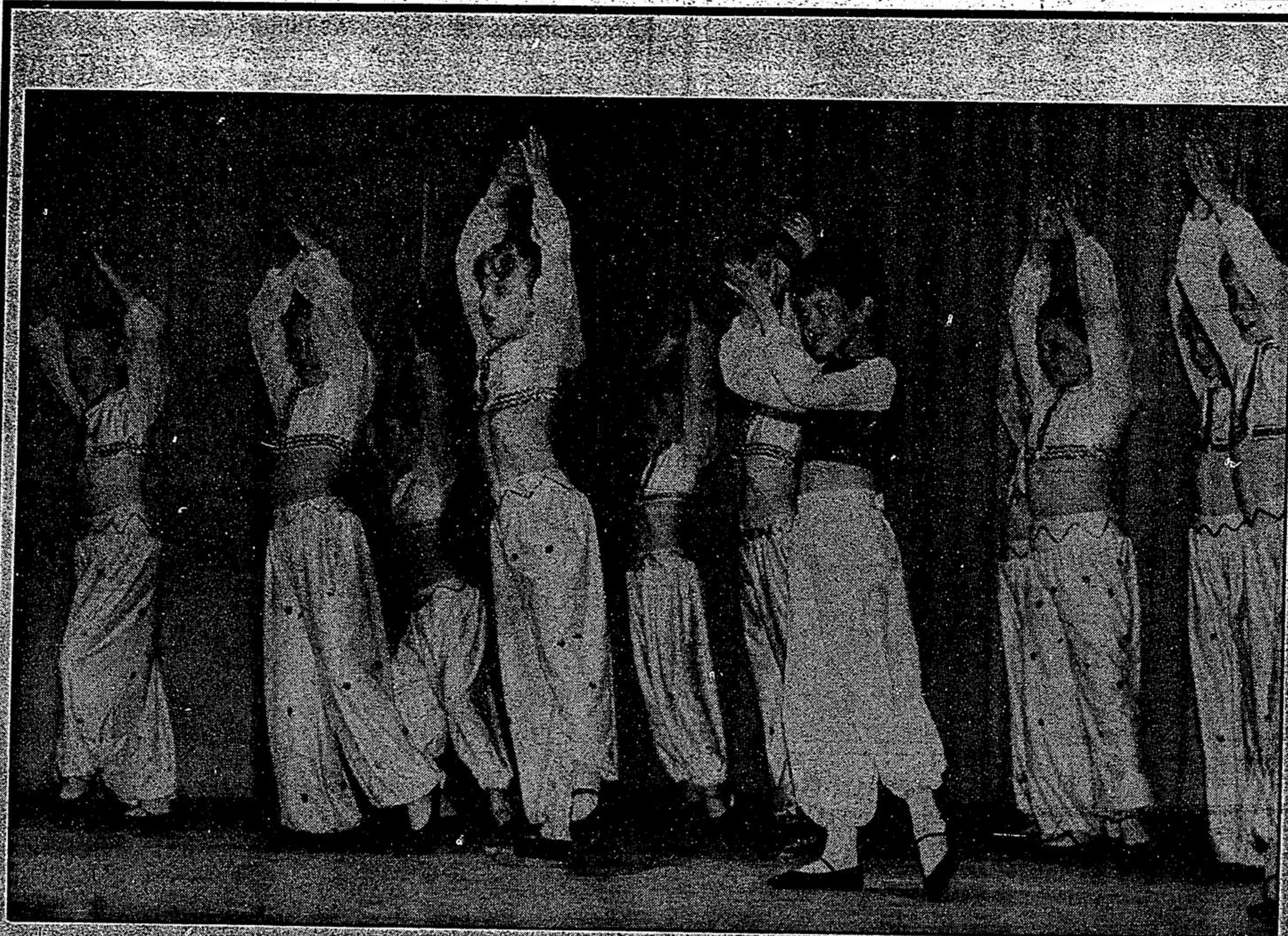
She also stressed concern for children's safety at Whitchurch-Highland's School where school buses will meet with these trucks.

The mayor added that there are no stop lights at the school's entrance and often the truck drivers are speeding.

"Also, the clay from the truck tires coats the road and when it dries it becomes a sea of dust. There is no dust worse than clay dust," Mayor Sainsbury says.

She asked regional officials to ensure a dust suppressant is supplied and wants temporary stop lights erected at Whitchurch-Highlands school.

She also wants York Regional Police to step up enforcement along the trucks' route "until the activity stops."



Dancin' dynamos

A lively chorus of youngsters work their way through a number last Friday at the Stouffville DanceCentre's seventh annual dance recital at Stouffville District Secondary School. Almost 300 children participated in presenting various dance perfor-

mances at the event, mounted by Michele Green, who runs the popular dance centre. A packed house enjoyed two nights of the recital, which this year included a piece entitled 'Friends' which was conceived and choreographed by Ms. Greene.

photo/ANNETTE BUCHKOWSKI

Land battle stalls stoplight bid

A dollar battle between two publicly-funded groups will surely cause the death of yet another Whitchurch-Stouffville resident, claims Sue Sherban, president of the Summitview parents/staff association.

And concerned parents are set to stop the traffic on Main Street in front of Summitview Public School if no action is taken to provide streetlights at the Main/Stouffer street intersection, she says.

Mrs. Sherban is furious negotiations between the York Region Board of Education and the Town of Whitchurch-Stouffville have "come to a standstill" over the price to buy land owned by taxpayers.

And she says the price battle between the two corporations is jeopardizing the children's safety.

"We want (the lights installed) now and we're prepared to picket across Main Street if there is no action by the end of June," Mrs. Sherban says.

The Stouffer/Main Street traffic lights - to be funded and already approved by the province - are desperately needed, as there has already been three adults killed crossing Main Street in front

of the school, she says.

The corner property is owned by the board, while the Town owns College Street and a rear piece geared for a bus-turning route, Mrs. Sherban says.

"The board wants to purchase the land as a trade-off for a portion of the corner property to install lights, but the two can't agree on a price," Mrs. Sherban says.

But the Town will not be undersold on valuable land, says Mayor Fran Sainsbury.

"One acre of serviced land is worth quite a bit of money," the mayor says, and maintains many school board members failed to show at a meeting with town officials to discuss a compromise.

"Half the people from the board didn't even bother to show up for the last meeting," Mayor Sainsbury says.

The mayor says the Town has every intention of fixing the Stouffer Street "jog" across Main Street by widening the patch on the south-east corner but adds the Town will lose a lot of money if it accepts the board's offer of purchase.

But board chairman Harry Bowes blames the negotiation standstill on the Town and says local politicians "releged on a previous deal" to swap land ownership.

"(The Town) wants to put in the lights, but they want us to pay for it. It's the taxpayers money either way you look at it. It goes from one pocket to the other," Mr. Bowes says.

He adds if the Town would agree on a straight swap of land the taxpayers would not be burdened with putting out more money, but he says officials "think their land is worth too much."

"We've told them we're not interested - we simply don't have the money in this year's budget. We had an understanding for the exchange of land but the Town renege on its deal," Mr. Bowes says.

"(Whitchurch-Stouffville officials) have no idea of reality," Mr. Bowes says.

Meanwhile a parents/staff association meeting is slated for June 14 at the school to further discuss strategy should the York Region board and the Town fail to settle the dispute.

CREATION

Local artist
shows her



SPORTS

Todd Townend
races at
SkyDome
See page 14



FAIR FUN

