

Stouffville

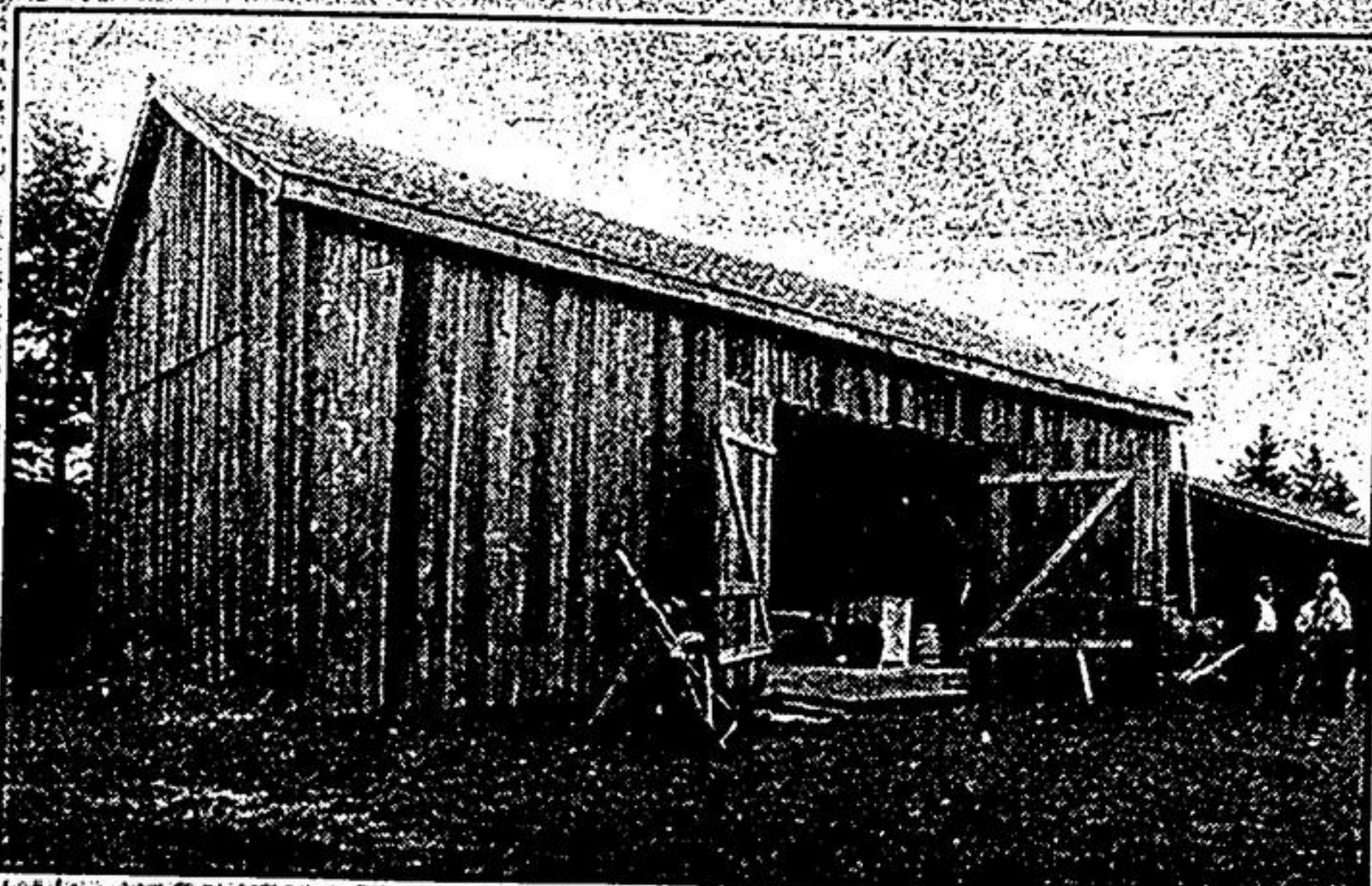
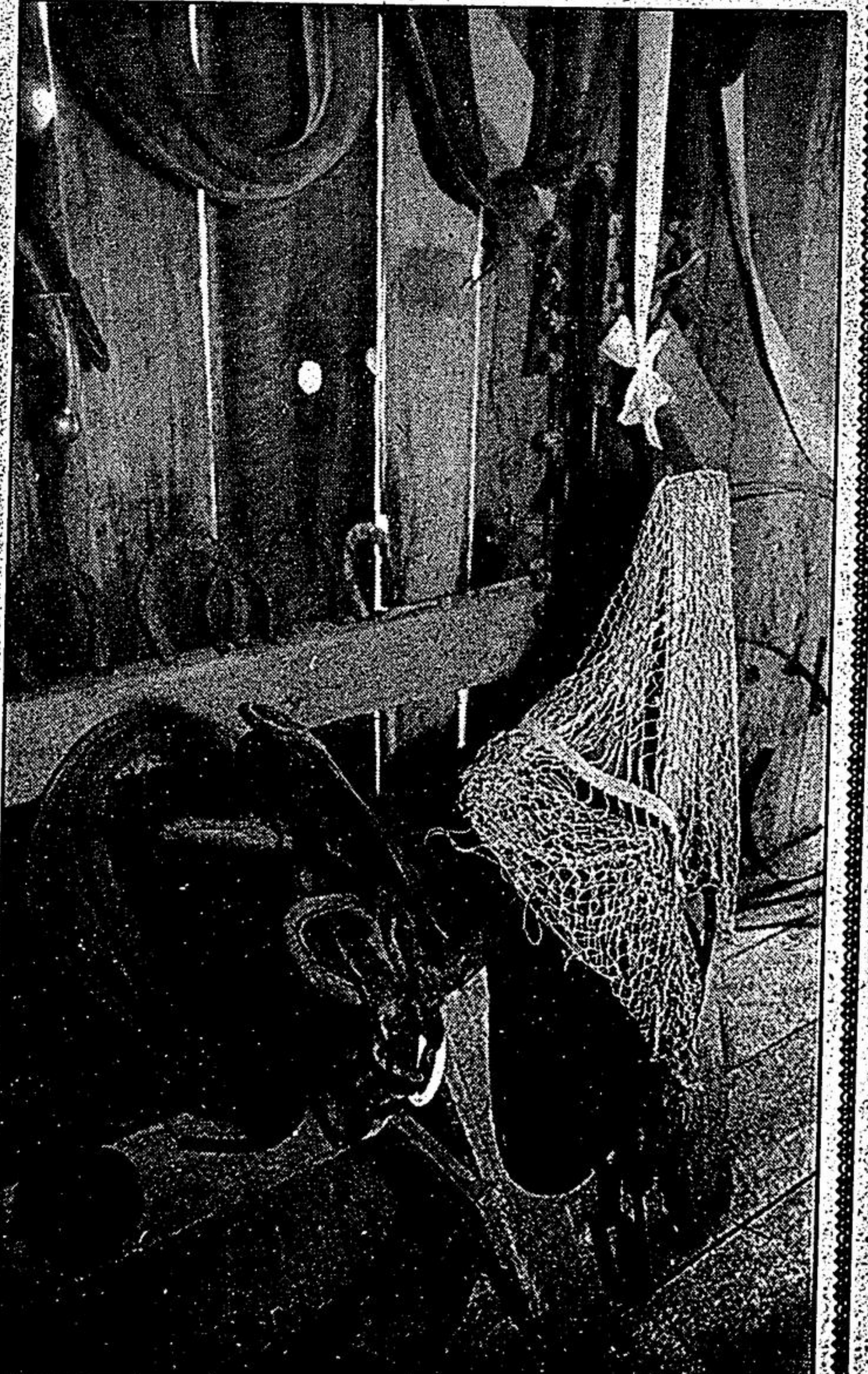
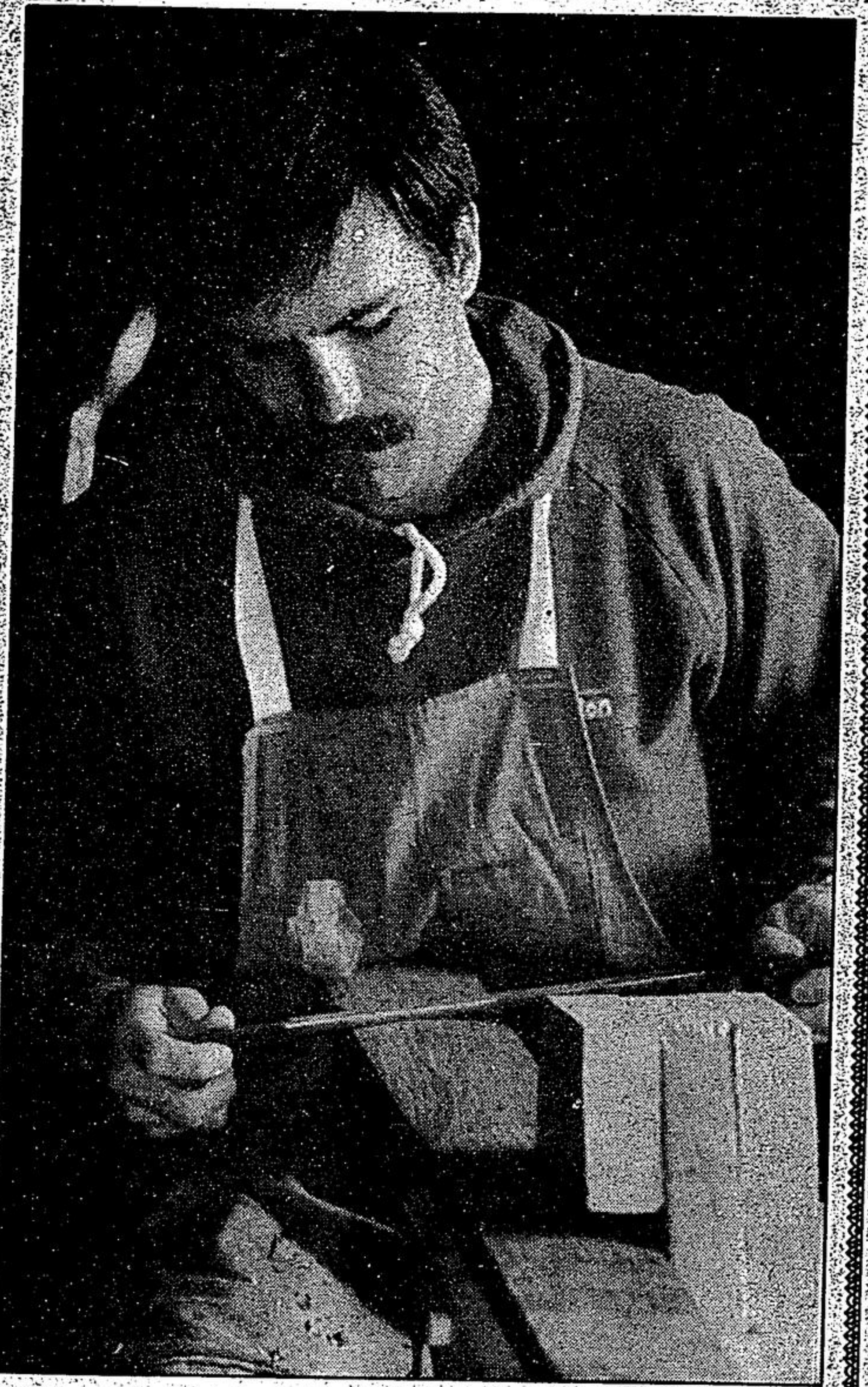
Close-Up

Stouffville museum brings barn back from pioneer past



The Whitchurch-Stouffville Museum opened the 1990 exhibition season with an old-fashioned barn-raising recently. The museum opened its new barn exhibit on Monday. At top, Dennis Bolender puts his 18-month-old

daughter, Anikka, in the driver's seat of an old wagon, while below, Bertha Pattenden was one of many local volunteers who man the museum. At bottom, the new barn, restored to the glory of pioneer days awaits visitors.



*photos by
bill lanning*

The new barn at the museum features many interesting sites. At top, right, carpenter Dan Zaroski prepares pall staves with a knife and shave horse. At right, an old saddle, harness and horse shoes along with other artifacts from days gone by, are on display in the new barn at the museum.