



When The Stars Come Up, Prices Come Down!

Reach For The Stars And Save!

MOST STORES CLOSED MAY 21ST, 1990

BLUE JAYS
DON'T BE DISAPPOINTED
Be an Early Bird!
 PURCHASE YOUR HALF PRICE VOUCHERS EARLY AND EXCHANGE THEM AT THE DOME
BLUE JAYS TICKETS
 TO THE GAMES OF YOUR CHOICE
SEATING SUBJECT TO AVAILABILITY OF TICKETS

SUPER ★ SPECIALS

FROZEN - WHITE OR PINK
A&P
Lemonade
 355 mL TIN
3/.99
 LIMIT 6 PER FAMILY PURCHASE

WITH THIS COUPON **A&P** SAVE 52¢
 FROZEN, BEATRICE - SELECTED FLAVOURS
Classic Ice Cream
 2 LITRE CONTAINER
2.47
LIMIT: 1 cent per coupon Offer valid thru May 19th, 1990. (Feature price without coupon 2.99) S.C. #624

WITH THIS COUPON **A&P** SAVE \$1.00
 REGULAR OR DIET
Pepsi-Cola or 7UP
 Case of 24 - 290 mL TINS (Unit cost 69¢ per 100 mL)
5.99
LIMIT: 1 case per coupon Offer valid thru May 19th, 1990. (Feature price without coupon 6.99) S.C. #624

REGULAR OR DIET
Pepsi-Cola or 7UP
 750 mL BOTTLE (Unit cost 65¢ per 100 mL)
.49
 PLUS 40 PER BTL DEPOSIT

FROZEN, SUPER RIGHT 6-8 OZ PORTIONS **"NEW"**
New York Striploin Steak
22.99

WITH THIS COUPON **A&P** SAVE 50¢
 TOMATO
Heinz Ketchup
 1 LITRE BOTTLE
1.99
LIMIT: 1 bit per coupon Offer valid thru May 19th, 1990. (Feature price without coupon 2.49) S.C. #621

WITH THIS COUPON **A&P** SAVE \$1.00
 SELECTED VARIETIES
Kraft BBQ Sauce
 750 mL BOTTLE
1.99
LIMIT: 1 bit per coupon Offer valid thru May 19th, 1990. (Feature price without coupon 2.99) S.C. #621

POWDERED LAUNDRY WITH BLEACH, SCENTED PHOSPHATE FREE
Tide Laundry Detergent
 8-10 LITRE BOX
7.99

JANE PARKER
Hamburger or Hot Dog Buns
 PACKAGE OF 8
.79

CUT FROM CANADA GRADE "A" BEEF
Boneless Top Sirloin Steak
 7.91/kg
3.59
 lb

JANE PARKER
Golden Pound Cake
 500 g PACKAGE
.99

PRODUCT OF CALIFORNIA
Sweet Ripe Strawberries
 2.84/kg
1.29
 lb

PRODUCT OF U.S.A; RIPE
Sweet Watermelon
 EACH
3.99

A&P COMMITTEE FOR FAIR SHOPPING When it comes to Sunday Shopping the real issue is Fairness. And your Right to Choose.

PRICES EFFECTIVE THRU SATURDAY MAY 19TH, 1990.
 We reserve the right to limit quantities to normal family requirements. Savings shown in this ad based on current Metropolitan Toronto A&P retail prices.
A&P
 A&P FOOD STORES

Here's looking at you!



photo/FICK MADONIK

Uxbridge area lawn bowlers turned out in full force on Saturday to take in opening day action at Uxbridge Lawn Bowling Club. Officials at the local club are trying to attract players of all ages to try the game. Are you the person circled in this photograph? If so, you've won \$25 in our weekly reader contest. Drop by the Uxbridge Tribune office at 59 Albert St. or the Stouffville Tribune office at 54 Main Street West in Stouffville to claim your prize. In the meantime, keep an eye out for our photographers. Here's looking at you!



Shocked
 BY HIGH PRICES?

Give us a Call

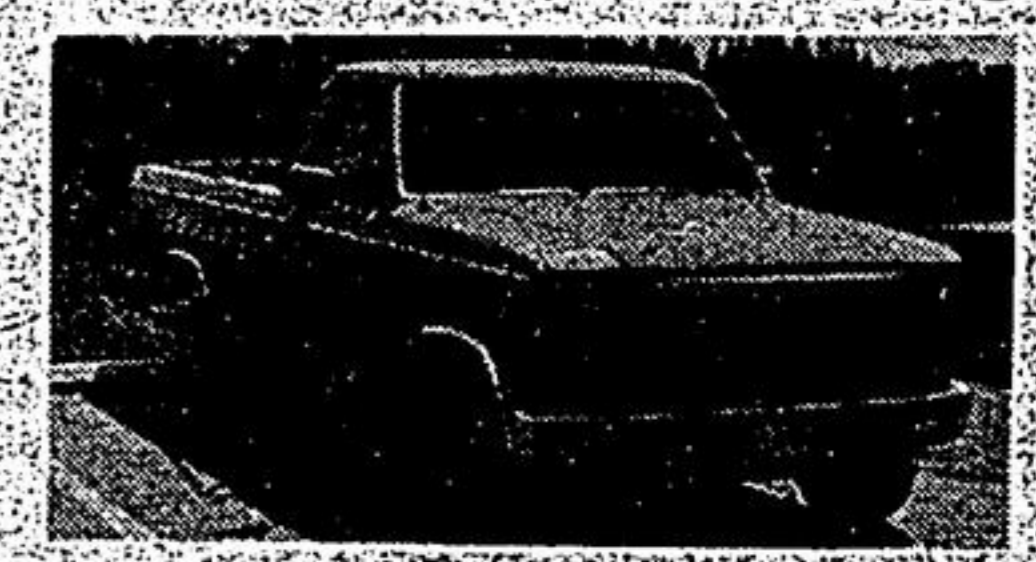
640-8016



1990 Chevy 1/2-ton 454SS Pick-up Limited Edition. This vehicle has no miles and has never been titled.



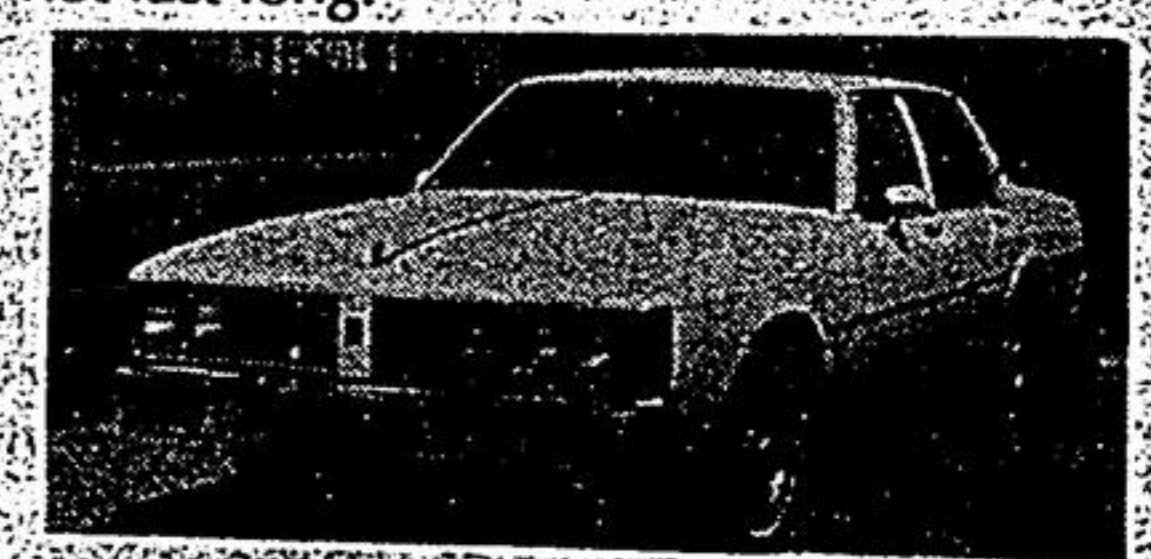
1986 GMC 30 Series 350V8 P.S. P.B., 4 spd. std., 750 x 16 x 8 ply Tires, lug rear 12' aluminum box with roll up rear door. Saftied.



1984 Ford 1/2-ton Pick-up 2-tone blue, a safe & reliable truck. Saftied. Priced to not last long.



1984 Chev "S" Jimmy, 2 wheel drive, very clean unit, owned locally, all new brakes all around. Saftied, economical.



1984 Olds Delta '88 Brougham 4 door sedan, loaded with all GM's fine options white with gray cloth, very clean unit, one owner.

We lease all makes and models for long or short term to fit your pocket book.

Patrick Auto Leasing
 856178 Ontario Inc.

20 Freel Lane, Stouffville

640-8016