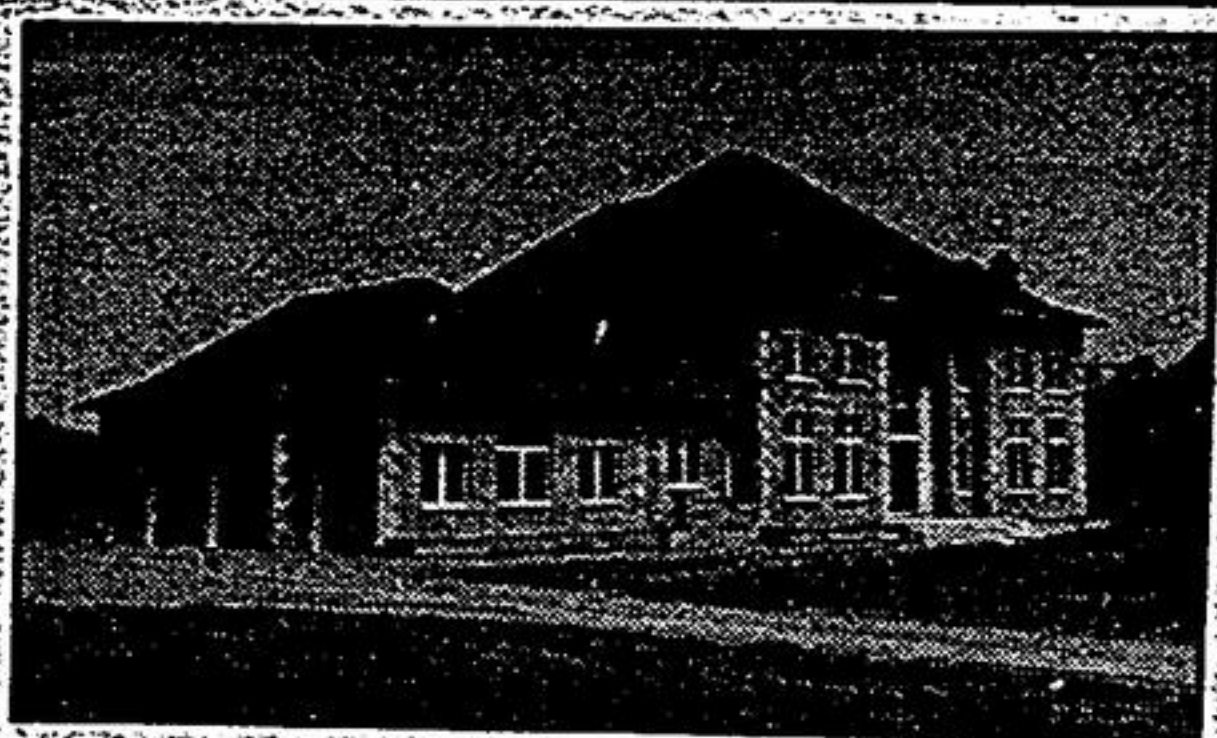




J. Hopson  
B. Sansome

## "CACHET ESTATES" FIRST TIME OFFERED!



\*New Auciello Custom home  
\*5650 sq. ft. superb quality  
\*5 bedrooms/7 bathrooms  
\*4 car garage with openers

\*spectacular grand marble foyer  
\*nanny's apartment c/w  
walkout  
\*beautiful 1 acre lot.



Unionville Branch

Call: Jennifer Hopson 940-4180  
Res: 877-5562  
Bert Sansome 940-4180  
Res: 470-9979  
Sales Representatives



476-4329 478-4777 883-1729



**FISHING - SWIMMING - TENNIS**  
become a life style when you move into this very special home. This dwelling has been well maintained and is perfect for the growing family - 3 bdrms. on ground level - t/p. in the liv. rm. - sep. din. rm. area - full fin. bsmt. w/airtight stove - dbl. garage, dbl. drive - pool size lot. A must to see with Gayle Powell or Bill Moorby, Sales Reps.



### DISTINGUISHED HOME

built with excellence - large spacious living with over 2550 sq. ft. of living space - beautiful fam. rm. w/corner t/p. leads to formal liv. rm. and powder rm. areas master bdrm. sweeps across the upper level with walk-in closet and 5 pc. ensuite - a truly special property @ a value of \$265,900, for viewing call Gayle Powell, Sales Rep.



### 10 ACRES WOODLAND ESTATE

Enchanting describes this 10 acre property, Stouffville North. A warm comfortable fam. rm. is dominated by a floor to ceiling brick t/p. 3 bdrms. of which one is a loft 24'x25'. Mins. to 404, mins. to Stouffville & Markham. Call now Anne Dale & Norm Craven, Sales Reps.



### OPEN HOUSE MAY 6, 1-4 P.M.

Hwy. 48 south of Bloomington. Yes, priced to sell quick. Reduced by \$29,000. Come see this country property in Stouffville. Fruit trees, perennial gardens, backs onto green belt. 3 bdrms., pine floors, stone t/p., French doors. Need I say more? Call Norm Craven, Sales Rep.



### OPEN HOUSE SAT. MAY 5, 1-4 P.M.

Stouffville \$278,000. 3 bdrm. private country home on 138'x290' lot Warden Ave. north of Bloomington. Min. to 404, new carpets, oak moldings, pine floors, fam. rm. with cathedral ceilings, 3 w/os to deck & patio. A pleasure to show. Norm Craven, Sales Rep.

## DRASTICALLY REDUCED LUXURY HOME AURORA

You must see this home. 4 large bedrooms, 4 bathrooms, main floor den, family room and laundry. Huge kitchen with walkout to deck. Walkout from basement. Backs onto ravine. Great view. 3100 sq. ft. Asking \$359,900. A perfect family home. Call 477-2298.



W. FRANK REAL ESTATE LIMITED

112 SCUGOG ST.  
PORT PERRY, ONT.  
985-7386 686-3931

### SCENIC WATERFRONT

1/2 acre beautifully treed building lot. North shore of Lake Scugog. Priced right at \$124,900. Call Cheryl Hill, Sales Rep. 985-7386, 985-0718 or 686-3931.

### NEWLY RENOVATED

Complete gut job, new windows, roof & siding, 2 bedrooms, 80' frontage. Almost ready to move in. Only \$124,900. Call Mark Smith, Sales Rep. 985-7386, 985-3110 or 686-3931.



### BETHANY

4 year old brick and vinyl 3 bedroom backspl. central vac. 100' x 200' lot. GM car pool nearby. Asking \$159,900. Call Bonnie Steel, Sales Rep. 985-7386, 985-3398 or 686-3931.



### 28.54 ACRE TRAILER PARK

East of Port Perry. Seasonal serviced trailer sites. Mixed bush with trails, large pond included. 3 bedroom bungalow & recreation hall. Priced at \$795,000. Contact John Wolters, Sales Rep. at 985-7386, 986-4303 or 686-3931.



### PORT PERRY \$192,900

3 bedroom Century home, modernized essentials, walkout from kitchen, verandah screened by mature shrubs. Call Christine Vanderniet, Sales Rep. 985-7386, 986-0380 or 686-3931.



## TUES. MAY 15 - 7:30 P.M. REAL ESTATE AUCTION FIVE ONE ACRE BUILDING LOTS

East of Valentia on County Rd 18 to 2nd turn right (see signs). Excellent lots with view of Lake Scugog. To view or for flyer call ORVAL McLEAN AUCTIONS 324-2783 LINDSAY

## OUTSTANDING PROPERTY MARKHAM

This is a must see!! One acre exec. home, 5 bed + 2 bed inlaw apt. 20 min. from downtown Tor/3 mins. to downtown Markham. swim pool/tennis court, + many fruit trees. \$\$\$ extras. Call for more details. 472-3807/292-7717.



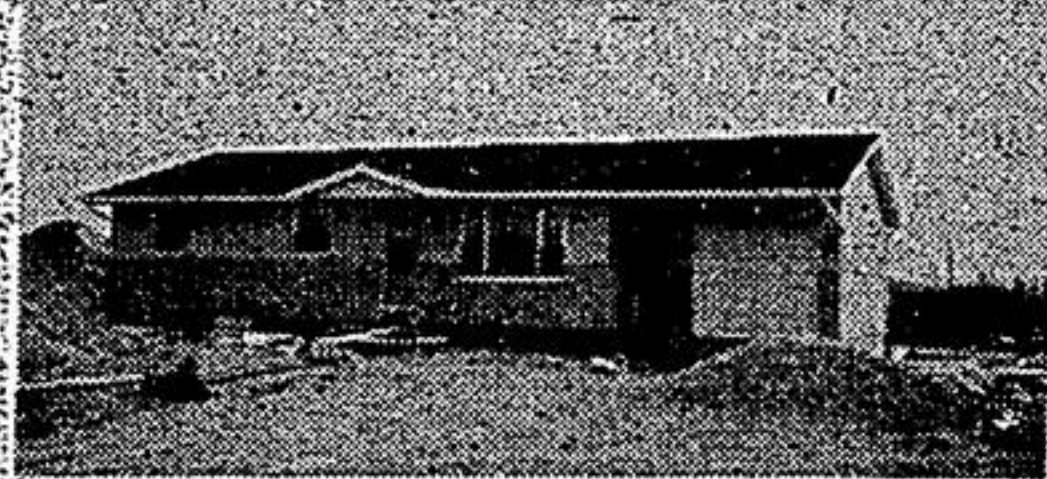
985-8041 - 139 QUEEN ST., UNIT 2, PORT PERRY

### OPEN HOUSES - SUNDAY MAY 6TH - 1-4 P.M.



### NEW BRICK

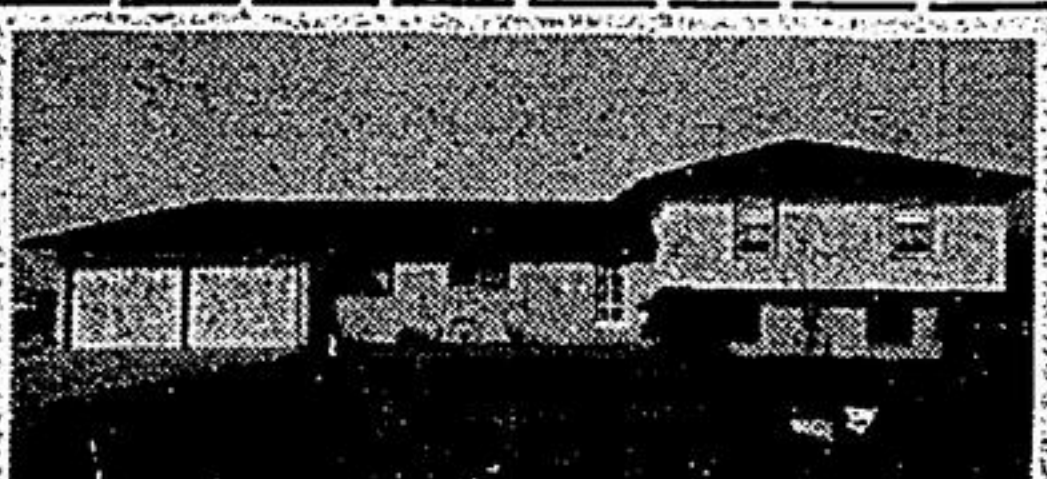
Raised bungalow, dining room, deck, family room, 1/2 acre lot and more at \$198,000. Registered Lake access.



### \$189,000

New brick & alum. bungalow, oak railings, large lot with lake access. A must to inspect.

Directions for above 2 homes - Port Perry Durham Rd. 2 North to Victoria Rd. 28 East to Mariposa Twp. Rd. 16 and follow signs to Washburn Island.



### HORSE FARM

10 Acres - 6 stall horse barn. Exceptional sidesplit, three large bedrooms, eat-in kitchen, dining room, family room with corner fireplace. In-ground pool. Many extras. Just listed at \$344,900.

### WATERFRONT RETIREMENT HOME

\$224,900 - Treed lot 10 minutes from town. See it today.

### \$169,000

With a large mortgage at 11 3/4% and nearly 3 years until maturity. 3 bedrooms, main floor laundry, dining room, spacious country kitchen, rec room with fireplace. A good home for a growing family. Call today.

### BUILDING LOT

With lake access, 80 x 200 - permits available. Listed at \$69,000.

FOR ANY OF THE ABOVE ADS  
CALL MARJ TRIPP AT 985-8041  
OR 985-7506 RES.



HOMELIFE/DURHAM REALTY INC.

248 Scugog St., Port Perry  
985-4406 1-800-668-5858



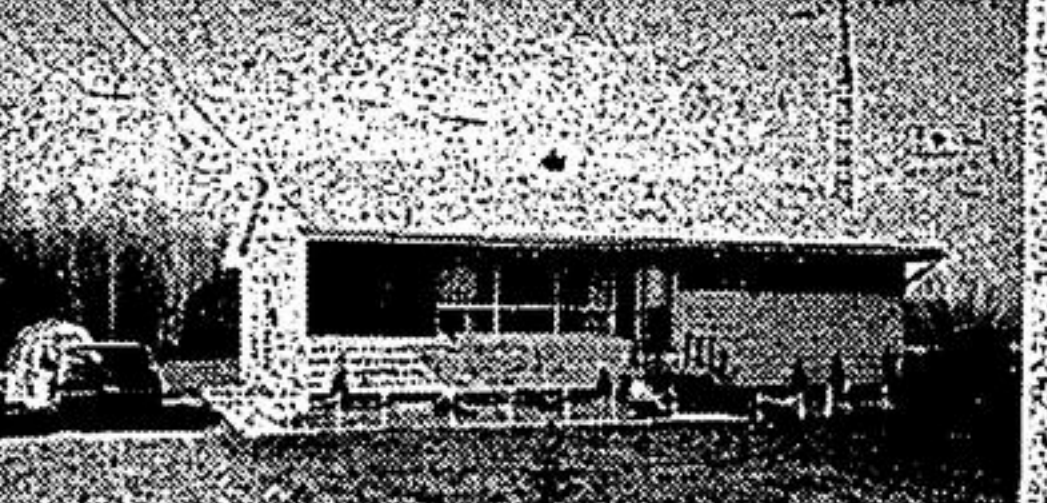
### 40 MIN. TO MARKHAM

Log home, mature trees, lot 120 x 330, 3+1 bedrooms, hot tub, 8 miles east of Port Perry. \$212,500.



### 142 FT. ON CANAL LAKE

Westerly exposure, watch the sunset in the sun porch, wet boathouse, double garage + workshop, sandy shoreline. Be a part of the Trent System, 15 miles east of Beaverton at \$239,900.



### 11 3/4% MORTGAGE UNTIL OCT. 1, 1994

11 3/4% mortgage rate on this dwelling until Oct. 1, 1994. 3 bedrooms, large living room, completely upgraded home, move right in, located 1 mile east of Beaverton, on 1.25 acres for \$169,900.



### WATERFRONT HOME OR COTTAGE

18 miles east of Orillia on Young's Lake, completely new interior, sandy shoreline, excellent for children, listed at \$149,900.

Contact Gord Gallegue Jr., Sales Rep. on any of the above properties. 1-800-668-5858 or 416-985-4406.