



When The Stars Come Up, Prices Come Down!

Reach For The Stars And Save!

OPEN SUNDAY
FROM 10 A.M. TO 6 P.M. AT
MUNICIPALITY OF YORK
• 199 Simcoe Ave., Keswick
• 8190 Bayview Ave., Markham
• 399 Main St. W., Stouffville

SUPER ★ SPECIALS

WITH THIS COUPON **SAVE \$1.11**

SELECTED VARIETIES
Yukon Club Beverages

CASE OF 24 - 200 mL TINS (Unit cost 58¢ per 100 mL)

3.88

LIMIT: 1 case per coupon Offer valid thru April 21st, 1990 (Feature price without coupon 4.99) S.C. #634

SELECTED VARIETIES
Yukon Club Beverages

750 mL BOTTLE (Unit cost 5.9¢ per 100 mL)

2 / .89

PLUS 40¢ PER BOTTLE DEPOSIT

Bright's Pure Apple Juice

48 FL OZ TIN

.89

LIMIT: 4 TINS PER FAMILY PURCHASE

Jane Parker Apple Pie

625 g SIZE

LESS THAN 1/2 PRICE **.97**

LIMIT: 2 PIES PER FAMILY PURCHASE

WITH THIS COUPON **SAVE \$1.00**

WHITE ONLY
Delsey Bathroom Tissue

PACKAGE OF 12 ROLLS

3.99

LIMIT: 1 pkg per coupon Offer valid thru April 21st, 1990 (Feature price without coupon 4.99) S.C. #629

CEREAL
Kellogg's Corn Flakes

675 g BOX

1.99

LIMIT: 2 BOXES PER FAMILY PURCHASE

REGULAR OR LIGHT
Sealtest Parlour Ice Cream

2 LITRE CONTAINER

2.99

SELECTED COLOURS
Kleenex Facial Tissue

BOX OF 150 SHEETS

.89

WITH THIS COUPON **SAVE 30¢**

SMOOTH OR CRUNCHY
Kraft Peanut Butter

500 g JAR

1.69

LIMIT: 1 jar per coupon Offer valid thru April 21st, 1990 (Feature price without coupon 1.99) S.C. #628

CHOICE
A&P Tomatoes

796 mL TIN

.89

CUT FROM CANADA GRADE "A" BEEF
Rib Steak

8.80/kg

3.99

lb

PRODUCT OF CALIFORNIA, PEAK OF THE CROP
Sweet Ripe Strawberries

QUART

1.99

CUT FROM CANADA GRADE "X" BEEF & BONE, OVEN READY
Prime Rib Roast

8.36/kg

3.79

lb

FROM THE TROPICS
Golden Ripe Bananas

1.08/kg

.49

lb

COMMITTEE FOR FAIR SHOPPING When it comes to Sunday Shopping the real issue is Fairness. And your Right to Choose.

PRICES EFFECTIVE THRU SATURDAY APRIL 21ST, 1990.

A&P

A&P FOOD STORES



Photo: DAVID BARNETT

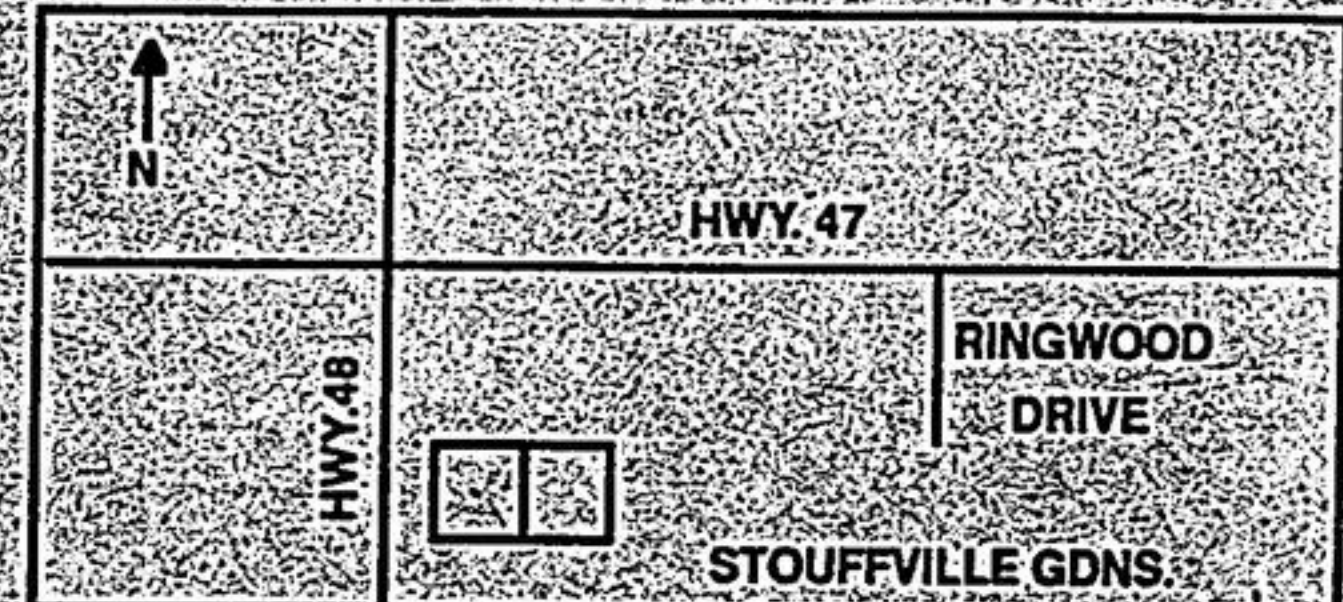
Here's looking at you

The Easter Bunny paid a visit to Port Perry on Sunday to help local children out during an egg hunt. Are you the person circled in this photograph? If so, you've won \$25 in our weekly reader contest. Just drop into the Uxbridge Tribune office at 59 Albert Street and identify yourself. No one claimed last week's prize, but keep an eye out for a Tribune photographer in the meantime. Here's looking at you!



GOLDEN EAGLE ART GALLERIES INC.

18 Ringwood Drive Unit 5, Stouffville, Ont. L4A 8C1
Tel: (416) 642-2279



EARTH DAY CELEBRATION - APRIL 21, 1990

We are honored to invite Her Worship The Mayor of Whitchurch-Stouffville to a Tree Planting Ceremony in celebration of Earth Day on Saturday, April 21, 1990 at 1 p.m.

On display at the Gallery is Robert Bateman's special time limited edition print in celebration of Earth Day, The Air, the Forest and the Watch.



SPECIFICATIONS

Image size.....	23" x 34 1/2"
Overall print.....	28 1/4" x 39 1/2"
Order deadline.....	April 22/90
Delivery.....	May/June 1990
Price.....	\$485.00 unframed
	\$645.00 framed

(Gallery sample or equivalent)

The Air, the Forest and the Watch

OTHER SPECIALS

- 20% OFF high quality custom & conservation framing
 - 20% OFF framed and unframed posters
- These offers are valid Wednesday, April 18, 1990 through to Saturday, April 21, 1990.

COME AND SHARE EARTH DAY WITH US AT THE GALLERY AND BROWSE THROUGH OUR LARGE SELECTION OF LIMITED EDITION PRINTS BY VARIOUS WELL KNOWN ARTISTS.

A gift will be given to the first 100 people on April 21. Refreshments and snacks will be served on *Earth Day*.

BUSINESS HOURS: Monday - Wednesday 10:00 a.m. - 7:00 p.m.
Thursday - Friday 10:00 a.m. - 8:00 p.m.
Saturday 10:00 a.m. - 6:00 p.m.