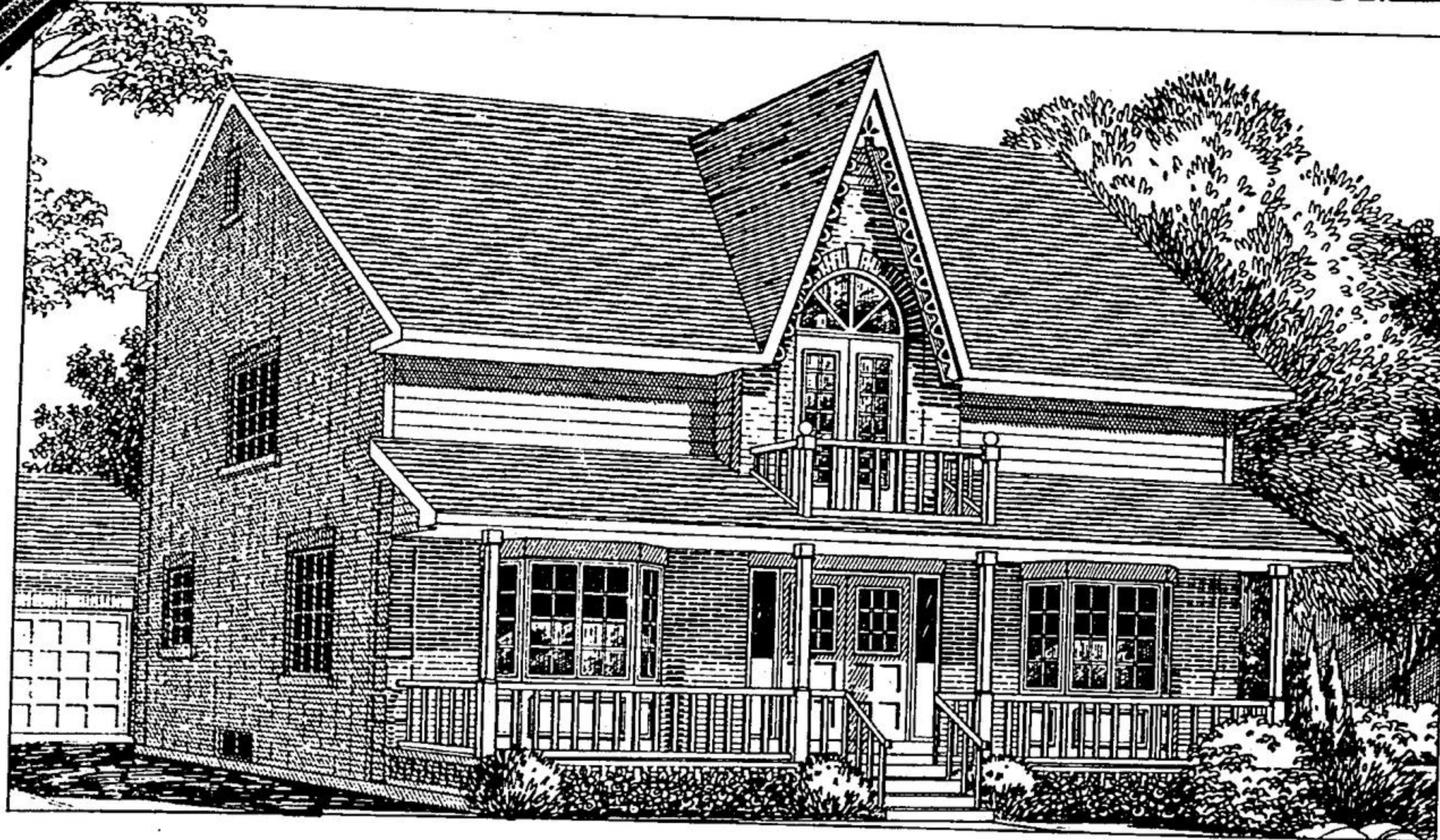


JUST WAIT TILL YOU SEE WHAT'S INSIDE!

VICTORIAN & GEORGIAN STYLE HOMES IN MARKHAM

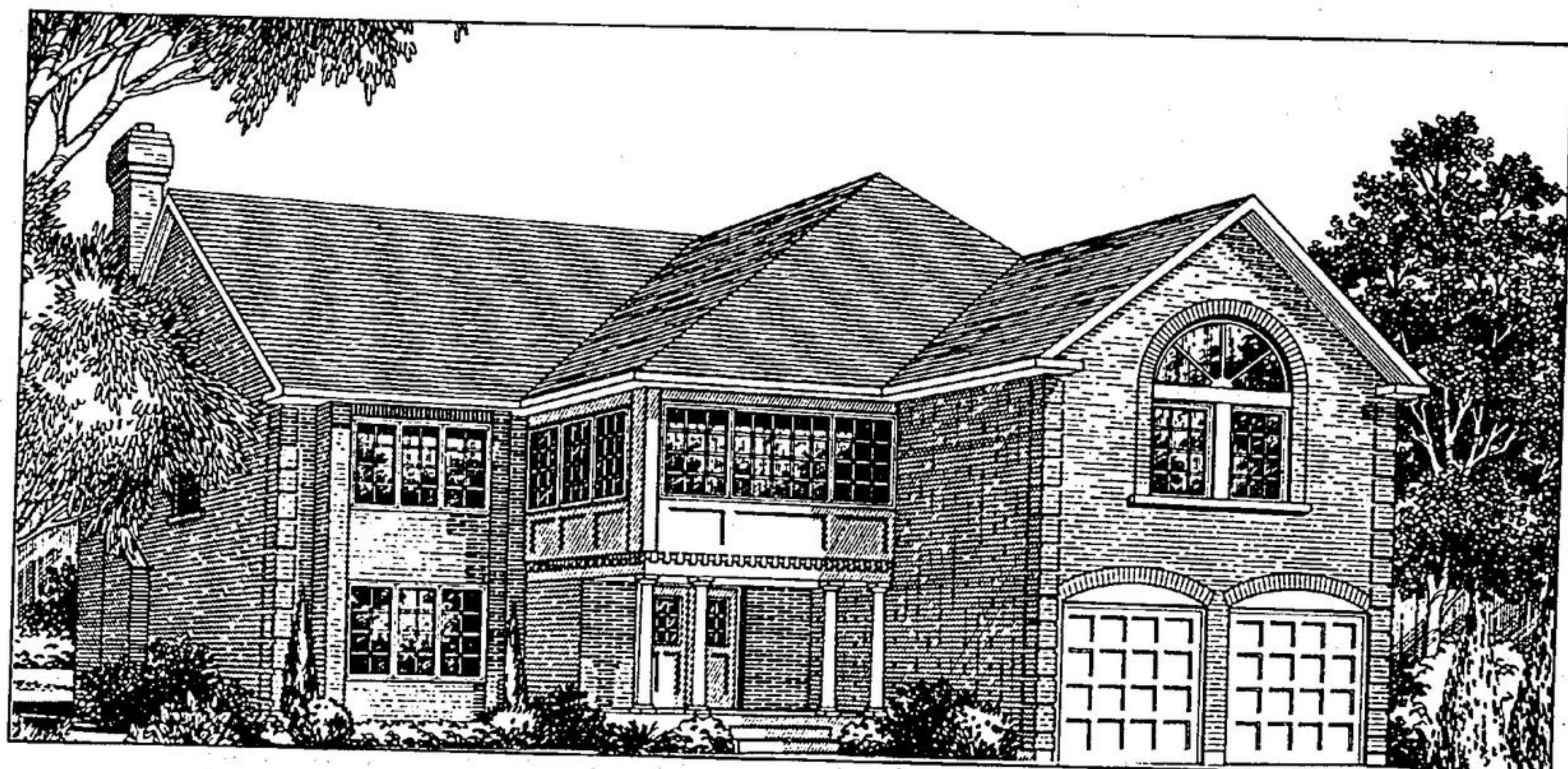


FEATURES

- Located on 2 exclusive Cul De Sacs
- 60' frontage with mature trees
- Marble, ceramics, hardwood
- Extensive use of casement windows
- Plaster Cornice moulding
- Top of the line kitchen cabinets

**9³/₄%
FINANCING
5 YEARS**

- Bevelled glass French doors
- Central air, central vacuum system
- Garage door openers, intercom
- Security system
- Plus many more added luxury features
- Walking distance to historic Main Street



PRICED FROM \$599,000

294-1372



Joanne Bond



Katherine Morgan

Model Homes Open
Mon. - Thurs. 1:00 - 5:00 p.m. Sat. & Sun. 12:00 - 5:00 p.m.
CLOSED FRIDAYS

Avenue Homes extends their congratulations to the Markham Stouffville Hospital

AVENUE HOMES

(HIGHWAY 7 EAST OF HIGHWAY 48 ON SOUTH SIDE)
WATCH FOR SIGNS

