



DIRECT WATERFRONTAGE OF 100' FOR \$89,900.

Build to your hearts desire on Canal Lake. Part of Trent system, close to Bolsover and Kirkfield. Excellent fishing, boating. Ideal for cottage or permanent residence. Call Gord Gallegue Jr., Sales Associate, 985-4406 or 1-800-668-5858.



STARTER OR RETIREMENT WATERFRONT

Completely new interior throughout. 3 bedrooms incl. large master, main floor laundry, eat-in kitchen with oak cupboards. Living room and kitchen overlook direct waterfront on Youngs Lake. \$159,900. Gord Gallegue Jr., Sales Associate, 985-4406 or 1-800-668-5858.



HomeLife/Durham Realty Inc.

INVESTMENT POTENTIAL 20 ACRES

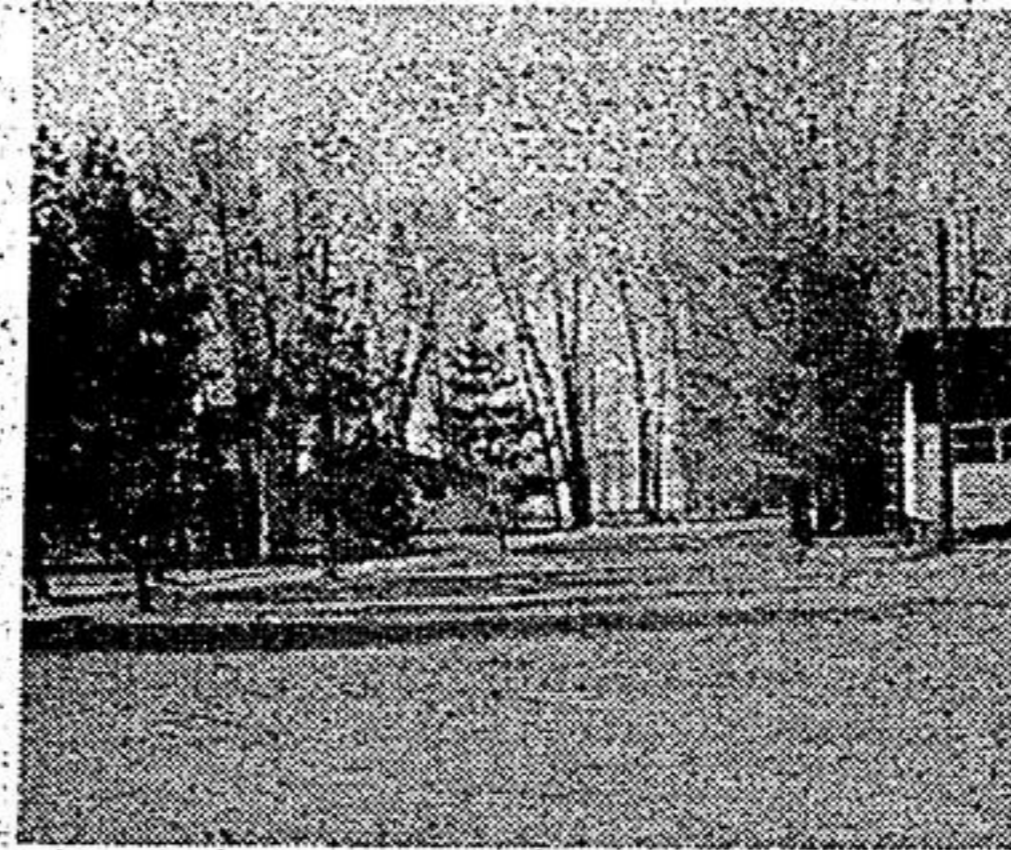


Unique home in amongst area of prestigious properties and industrial land. 644 ft. road frontage on Simcoe St., North Oshawa. Property contains an exceptional 3000 sq. ft. workshop insulated and heated, also a 2nd rental house approx. 1200 sq. ft. This property has tremendous potential, i.e. small business possibilities, storage, estate home with privacy. Commuting distance to Metro. Priced to sell, \$598,800. Call Brett Laycoe, Sales Rep., HomeLife/Durham Realty Inc., 1-800-668-5858.

985-4406
or
1-800-668-5858.

OSHAWA

Excellent Commercial Condominium unit available downtown Oshawa. Unit is approx. 1850 sq. ft. Exceptionally decorated and plenty of parking available in newer commercial mall. Ideal retail outlet or business location at only \$219,900. Call Brett Laycoe, Sales Rep., HomeLife/Durham Realty Inc., 1-800-668-5858.



YOUNGS LAKE BUILDING LOT

Direct 50 ft. frontage on Youngs Lake. Ideal for new starter, retirement home or cottage. Located 15 min. east of Orillia or 25 min. north of Beaverton. \$55,900. Call Gord Gallegue Jr., Sales Associate, 985-4406 or 1-800-668-5858.

RE/MAX
county town realty inc. realtor
P.O. Box 175
Bethany, Ont. L0A 1A0
(705)277-3232 or toll free: 1-800-461-6418



VILLAGE OF BETHANY

2 bedroom century starter home, large lot, pool, detached garage. \$134,900



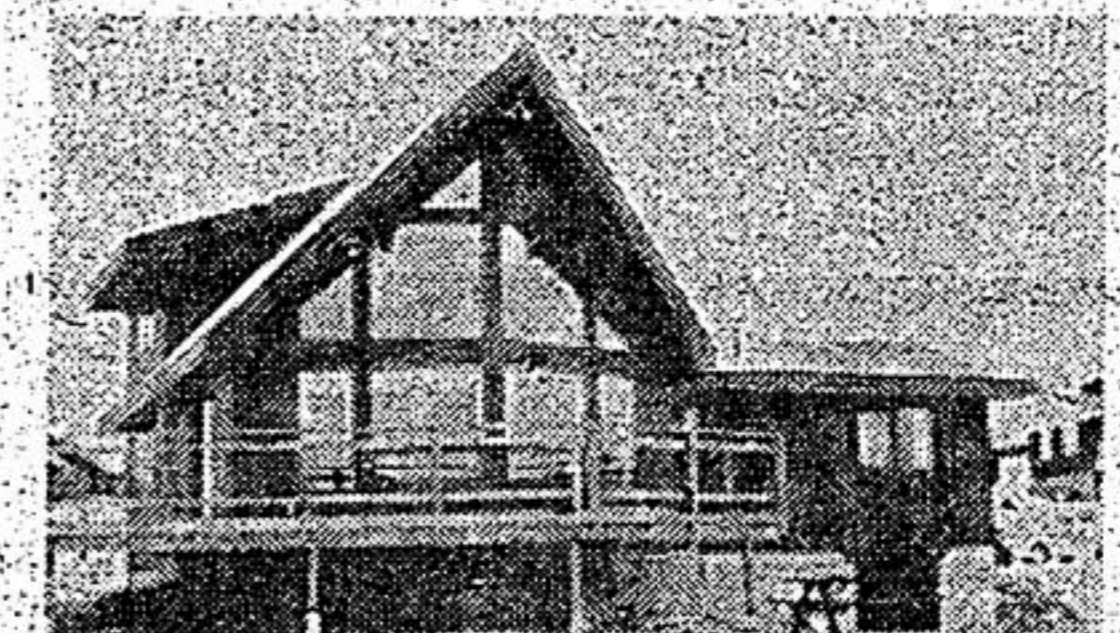
BETHANY HILLS

Fabulous 3 bdrm. bungalow, private fenced country lot, oak kitchen, large deck, fin. fam. room with wood stove, attached garage paved drive. \$209,900.



HOBBY FARM 2-1/2 ACRES

With 3 fenced paddocks, home features 3 bdrms., large eat-in kitchen, hardwood flrs., cent. vac., partially fin. bsmt., small barn with water & hydro. Bethany West, \$194,900.



DEVIL'S ELBOW (BETHANY)

\$224,900. Cedar post & beam & oak flrs., European kit., 3 bdrms., 1-4 pc., 1-3 pc. bath, full unspoiled bsmt. with w/o, 1 acre lot.

Bethany Hills - 46 acres, half clear, incredible view, \$139,900.

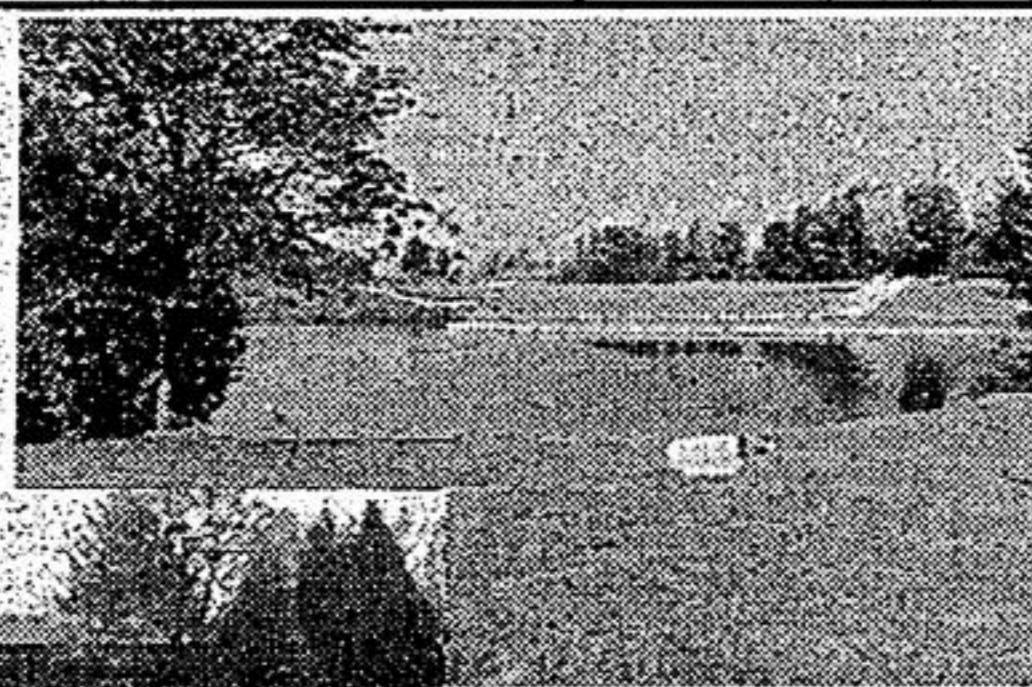
Pontypool - 50 acres, mostly bush, permits available. \$149,900.

JUST LISTED - custom built bungalow, stone exterior, spacious open concept, cathedral ceiling, oak cupboards, ceramic tile flrs., w/o to large deck, dble. car garage, all situated on 3-1/2 acre lot with hardwood bush and stream. \$349,900.

After-hours call Dave Marsh, Sales Rep. 705-277-2703

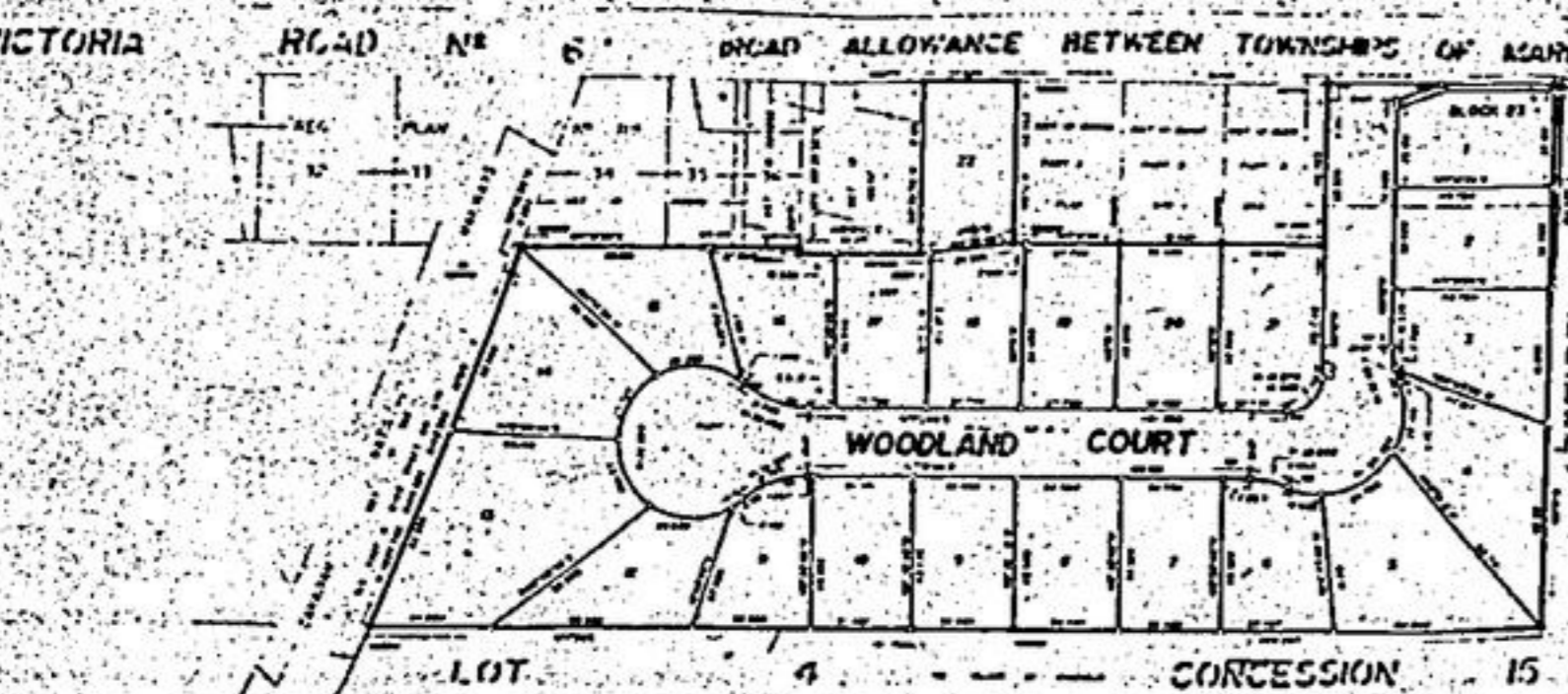
2 COMMERCIAL PROPERTIES??

- *Main St., Stouffville frontage
- *2700 sq. ft. brick detached 2 storey commercial building
- *Retail store (leased) with alarm system, new hardwood floors, office
- *3 bathrooms, 3 bdrms., 2 living rooms, 2 kitchens
- *Also on same property - Park Drive South frontage
- *Double detached garage on double driveway
- *Commercially zoned
- *Access from park to public parking
- *Ideal for frozen yogurt or fast food
- *Service of lot approved in writing by town
- *Architectural drawings of new 2 storey commercial building have been submitted to Town in compliance to building codes specifications.
- *\$479,000 or Best Offer
- Call Platinum Pines Corp. 642-1280



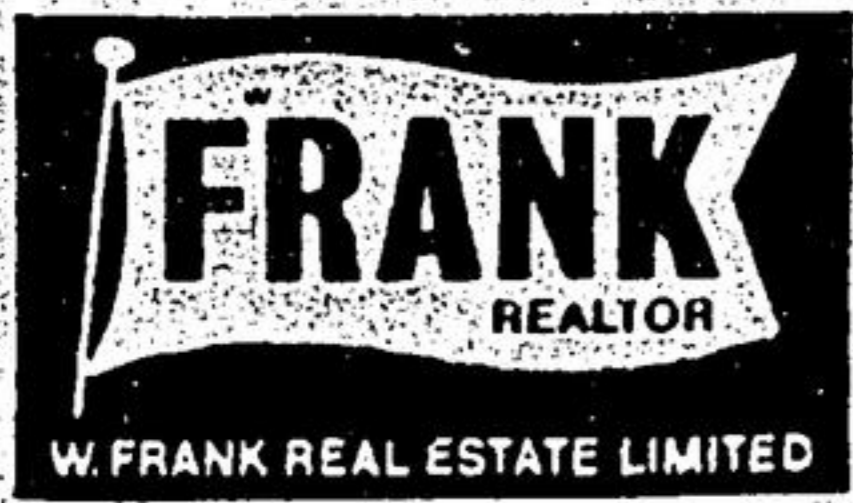
NEW CUSTOM BUILT 2200 SQ. FT. WATERFRONT HOME

Large 3 bedrooms, master with walk-in closets and ensuite with Jacuzzi. Main floor laundry, kitchen with nook area, separate dining, large living room with french doors, main floor family room with wall to wall stone fireplace with heatator. Home completely trimmed out in solid oak. 3 washrooms. 3 walk-outs to beautiful terraced 100 ft. waterfront on Trent system, 5 miles north of Beaverton. \$435,500. Call Gord Gallegue Jr., Sales Associate, 985-4406 or 1-800-668-5858.



DEVELOPMENT PROPERTY

22 lot plan of subdivision in The Village Woodville (East of Beaverton, North of Port Perry). Approx. 10 ac., zoned residential. Ideal for custom built homes this year, listed at \$659,000. Contact Gord Gallegue Jr., Sales Associate, 985-4406 or 1-800-668-5858.



W. FRANK REAL ESTATE LIMITED
PORT PERRY

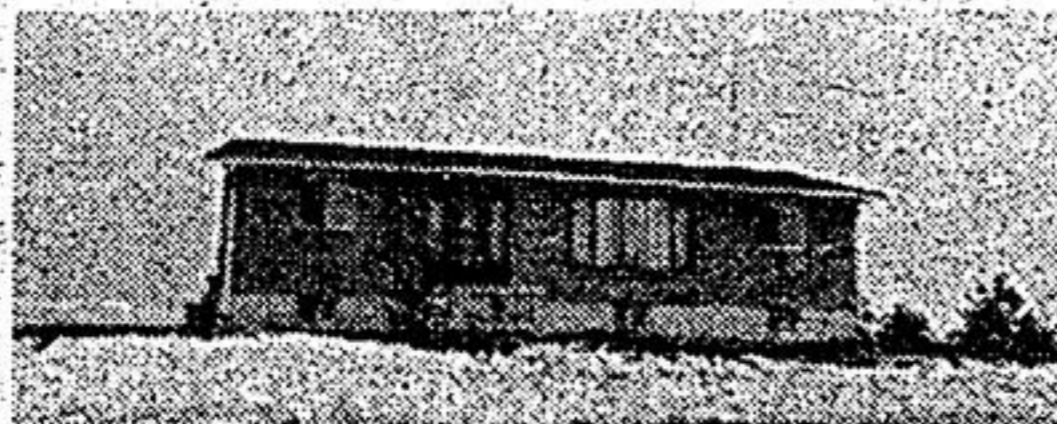


MANILLA VILLAGE

3 bedroom custom built bungalow on 1/2 acre lot with 2 car attached insulated garage. Over 1600 sq. ft. living area on main floor, sun room, main floor laundry, central vac. Only \$184,900. Vendor will assist with financing. Worth your inspection! Call Bruce Currie at 985-7386 or 705-357-3392.

300' WATERFRONT

2.9 acres on Wagner's Lake. Beautiful treed lot. ideal for seasonal home. Priced right at \$210,000. Contact Cheryl Hill at 985-7386 or 985-0718.



BLACKSTOCK AREA - REDUCED

25 acre parcel with trees, 3 bedroom, 4 year old brick home with oak kitchen cupboards, full basement with woodstove, detached block garage/workshop. Easy commuting to Oshawa. Now priced to sell at \$299,900. Call Ernie Duncan at 985-7386 or 986-0055.



STARTER HOMES

2 bedrooms, overlooking the lake, private lots. For only \$129,900 - \$132,900. For more information, call Valerie Hoffmann at 985-7386 or 985-2526.



SASSY SIDESPLIT - ROBLINGLADE ESTATES

Maintenance free exterior, 3 bedrooms, eat-in kitchen, plus separate dining, walkout to 16' x 20' deck, family room with fireplace, 1 1/2 car garage on well groomed corner lot featuring postcard view of Trent water system. At \$209,900 you'll want to stay. Call Debra-Ann Taylor 985-7386 or 985-8881.

100 ACRE FARM, SEAGRAVE \$385,000

5 bedroom, 75 year old farm house, beautiful acreage, 65 acres workable, 35 acres bush. Barn, implement shed. Previously veal calf operation. For more information or viewing call Bonnie Steele at 985-7386 or 985-3398.

WILLIAM'S POINT

Prestige, treed building lots in area of fine homes. Only \$110,000 - \$129,900. For more information, call Mark Smith at 985-7386 or 985-3110.

IMPROVING YOUR ODDS AGAINST CANADA'S #1 KILLER.



HEART AND STROKE FOUNDATION OF ONTARIO

FONDATION DES MALADES DU COEUR DE L'ONTARIO