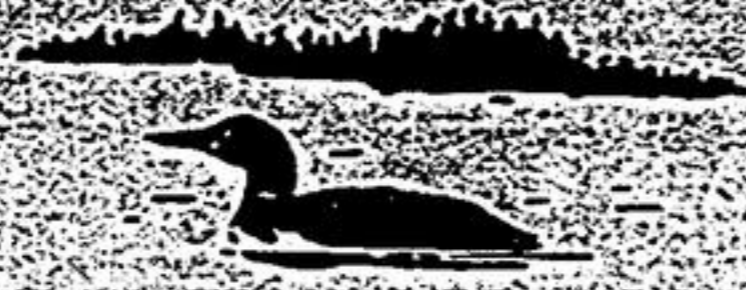


Century 21

HIGHLANDS REALTY INC.

HALIBURTON, ONTARIO
705-457-3696
Serving The Haliburton Highlands



EAGLE LAKE BEAUTY:

This well landscaped riverfront property could be yours! Don't miss viewing the 2+1 bedroom bungalow with fireplace in living room. Large kitchen/dinette, carport & workshop. Enjoy next summer swimming and fishing and just relaxing in your own backyard. Close to shopping and Sir Sam's Ski Hills. Asking \$145,000.

REDUCED, REDUCED, REDUCED!

Was \$226,000 - now \$159,450. Built and decorated to the highest standards. You benefit because vendor says sell. Bring your cheque book!

2 LARGE BUILDING LOTS:

Treed, year round road off Hwy. 121. Lots are side by side. Motivated vendor. \$30,900 & \$34,900.

1 LARGE BUILDING LOT:

Maple Lake area. Nicely treed. Private. \$30,900

PERCY LAKE STARTER:

Enjoy 111' of sand beach! 3 bedrooms, year round road, quiet setting on this picture-perfect lake. Affordable at \$129,450.

BEAUTY BY THE RIVER:

Brand new 3 bedroom home in scenic treed privacy. 154' river frontage. Year round road. Just beautiful! \$158,450. Call today.

GOING... GOING... YES

A 5 acre level, treed building lot with highway frontage for only \$18,000. Not many of these left, so don't delay.

SLASHED OVER \$10,000!

3 bedroom bungalow, 200 amp. hydro, garage, appliances & more. Only \$98,500.

LOG FANCIER REQUIRED:

We have just listed a nice log cabin on year round road, lake frontage over 100 ft. and affordable at only \$99,900.

JUST CREATED:

5 lots on Conseau Lake. 110 ft. frontage, sandy shoreline, nicely treed and facing south, take your pick. All list at \$74,900.

NEED A PROJECT?

We have a 2 bedroom, handyman or investment special at only \$64,900. Located in the Village of Haliburton. Just needs some T.L.C.

MINNIECOCK LAKE:

2 beautiful large lots to choose from, priced at \$89,000 & \$95,500.

HIGHWAY ACREAGE:

2 parcels, 60 acres & 73 acres, both priced at \$39,900.

COUNTY ROAD ONE STARTER:

Excellent home on County Road 1 with easy access to Haliburton & Minden. Can be yours for \$74,900. Call today for more details.

LOTS OF SPACE

In this custom built 3 bedroom family bungalow with rec. room and town location and amenities. \$134,900.

GULL LAKE

15 minutes away from this all season cottage and sleeping cabin on river. \$99,900.

INVEST AND SAVE

In this 4 unit apartment house with good income. Town and Gull River location. \$189,500.

PANORAMIC VIEW

From this waterfront lot on Percy Lake. Plowed road. \$79,900.

MINT FRESH LISTING

Near Hwy. 121, large 3 bedroom home plus fin. rec. room and den on lower level. Deeded access to Lake Kashagwigamog. \$179,000.

LET US INTRODUCE YOU:

To this freehold townhouse being built. 3 bedrooms, fireplace and more. \$139,900.

TRANQUILITY PLUS

While you walk this 100 acres complete with a babbling brook, waterfalls, beaver dam and pond. \$89,900.

MOVE ON UP:

Prestigious lakefront home on Drag Lake. 250' of shoreline, 3 bedrooms, 3 fireplaces and many more quality features make this one of the finer properties available today. At \$235,000, this amount of quality would be hard to duplicate.

BUSINESS OUT OF YOUR HOME:

Commercial opportunity awaits you on Hwy. 503. With minor renovations, you can have the best of both worlds - your own home and business from the same location. Reduced to \$113,900.

WATER ACCESS LOT:

Beautiful well treed lot on year round road for 4 season use, deeded access to Lake Wenona included in asking price of \$27,900.

ALLEN LAKE:

Waterfront lot on beautiful Allen Lake. Vendor is looking for offers. Listed at \$46,900.

A PHONE CALL AWAY:

Lovely waterfront lot on spring fed lake. Hydro and telephone available. Nature lovers call today for more details. Compare at \$69,900.

LOOKING FOR A CHALLENGE?

Shell cottage on Paradise Lake waiting for your finishing touches. Try an offer on asking price of \$79,000.

Country Lane
REALTY LTD.
985-7351
Hwy. 7A & High Street, Port Perry, Ontario



PORT PERRY - WALK TO DOWNTOWN

3 bedroom brick bungalow - fireplace in living room - recreation room with woodstove - walk-out to deck - beautiful, private, fenced backyard with unobstructed view, paved drive, shows to perfection - \$196,500. Call 985-7351.



REDUCED TO ONLY \$151,900. SUNDERLAND STARTER OR RETIREMENT HOME

2 bedroom brick bungalow - eat-in kitchen - cozy fireplace in living room - full basement - attached garage - conveniently located near stores and school. Call 985-7351.



FABULOUS 3000 SQ. FT. BRICK HOME ON 50 WOODED ACRES JUST LISTED

This dream home has many features such as huge kitchen with solid oak cabinetry - family room with wall to wall brick fireplace - formal dining room - 27' master bedroom with 6' Jacuzzi in ensuite plus 3 additional bedrooms - solid pine doors throughout - Pella windows - this 1 year old home overlooks kidney shaped pond. Very priv. location. Worth much more than asking price of \$334,000. Call 985-7351.



QUALITY THROUGHOUT

Large executive 2700 sq. ft., 4 bedroom brick ranch bungalow - gorgeous oak kitchen - built-in oven & range - main floor laundry - family room with fireplace - 3 bathrooms - many more features - all on 2.47 acres, 25 minutes north of Port Perry. Priced at only \$274,500. Call 985-7351.

WANT A WOODED RETREAT?

Build your own custom home on this 47 acre estate of maple, birch and cedar trees - permit available. Just south of Port Perry. \$365,000. Call 985-7351.

EXCELLENT

13 acre parcel with 23 lot size plan - sanitary sewers at lot line - frontage on Hwy. #7. Excellent value at \$449,000. Call 985-7351 for details.

INVESTORS & DEVELOPERS

43 lot residential development plan on 23 acres - edge of small village north of Oshawa. Financing available. Exclusive and listed at \$1,290,000. Call 985-7351 for details.

NEW HOMES - APPLEVALLEY PORT PERRY
Quality construction by well known local builder - 1600 sq. ft. 2 storey brick & aluminum - 3 bedrooms - 1 1/2 baths - walk-out from finished basement - garage and more - \$259,900 - 2000 sq. ft. sidesplit - 3 bedrooms - 2 1/2 baths - main floor family room - fireplace - finished recreation lounge - walk-out from basement - garage - \$289,900.



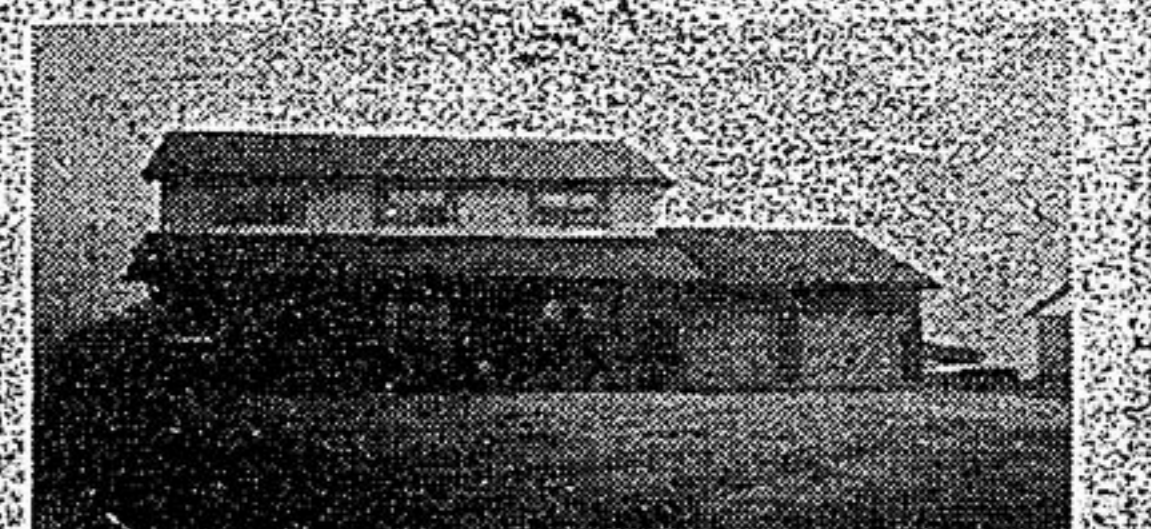
HAND HEWN PINE LOG HOME

On 2 acre private wooded lot - 10 minutes from Port Perry - beautifully landscaped with spring fed pond - home has 3 large bedrooms - 2 1/2 baths - pine loft overlooking kit. and family rm. areas - storage barn - very unique property. Just listed at \$489,000.



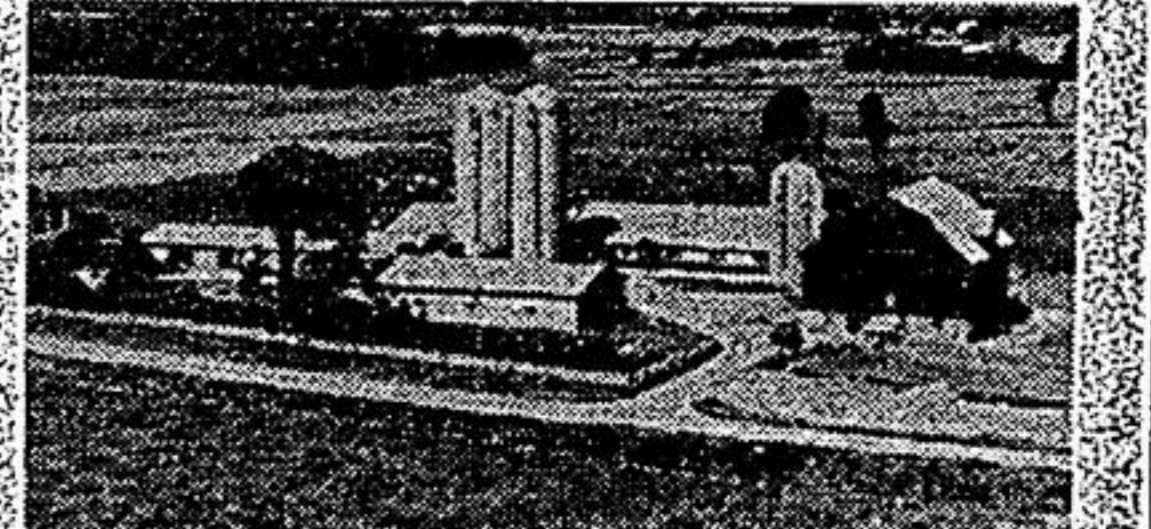
ONLY \$199,900 - WALKING DISTANCE TO DOWNTOWN UXBRIDGE & SCHOOLS

3 bedroom brick sidesplit has dining room - finished recreation room with fireplace - attached garage - hedged lot. Don't miss out! Call 985-7351.



MOVING UP? EXECUTIVE HOME

In Cawker's Creek, Port Perry - 21' x 22' master bedroom with ensuite - 2 additional bedrooms - beautiful, large kitchen - main floor family room - walk-out to 20' x 40' in-ground pool - 1/2 acre lot. Home is absolutely immaculate. Listed at \$369,900. Call 985-7351.



217 ACRE MODERN DAIRY OPERATION

210 acres of excellent producing land - 2 storey, 5 bedroom - all buildings in good repair - vendor will assist in financing at 10% interest - Sunderland area. Listed at \$755,000. Call 985-7351.

SOLD AS A PACKAGE

Located with frontage on Hwy. 7 & 12 and Concession 3, Brock Twp. (Sunderland area), a total of 107 acres of rolling land, bush and creek - suitable for golf course, riding stable, etc. The package is made up of 7 acres of land fronting on the Hwy. \$159,900 - 95 acres of scenic beauty with a 3 bedroom brick bungalow, \$359,900, and 5 acres of legal ABATTOIR. This is a thriving business with room for expansion. The building with all equipment included is \$339,900. For further information call 985-7351.

DIANE HOOKER	Res. 985-2276
ROBIN PARISH	705-439-2173
KEITH PUCKRIN	Res. 985-2489
RALPH FARIMAN	
F.R.I., C.R.A.	Res. 985-2160
WINDA WALSH	Res. 986-4335
ROY CORDEN	Res. 985-9412
GAIL SCALA	Res. 985-9395

OPEN HOUSE SUNDAY 2-5 P.M. UNIONVILLE

3,100 sq. ft. executive home, 4 bedrooms, 2 1/2 pc. and 1 1/2 pc. bathrooms. Main floor den, family & laundry, greenhouse kitchen. Double garage. Lots of upgrades. Circular staircase, open foyer, central air, central vac. Air cleaner, security system. Walk out from kitchen and family room. Corner fireplace in family room. 50' x 120' fully fenced lot. Close to all amenities. \$409,900. Immediate possession. Agents welcome. 479-5848. Call for directions.

PHILIP MIHOREAN & ASSOCIATES LTD.

THE GENEROUS LEASE!

New and attractive industrial space, 40,000 sq. ft. in Newmarket. Will divide. Near Hwy. 404. 15 minutes from 401. \$8,339.50 sq. ft. Lots talk. Mr. Rosner, 477-1777 (days)