

Shop 'til you drop close to the Dome

The say, even the worst memories fade with time and they must be right. Why else would people take a whole day's holiday from work and squander it on shopping?

I'm not talking your local plaza here. I mean the big time, one of those vast shopping centres where you leave your car on one level and spend much of the latter part of the day trying to recall which store it was nearest and whether it was at the hardware store exit or the boring end by the banks, trust companies and mail offices.

Your early enthusiasm is soon dashed by reality as you discover that on your budget, it'll be a very long time before you manage to transcend the self-image you've inadvertently created, a cross between Dear Aunt Agnes and the 'before' pictures in those ads for weight-loss clinics.

It's not that you hate everything you see, just everything you can afford. Reluctantly, you decide that although you may be a Holt Renfrew shopper by inclination, your financial state places you more in the Bi-Way category.

At last you see something you like which is only somewhat beyond your means; you decide to try it on and that's when your troubles really start.

As you enter the store, a wall of



KATE'S CORNER

Kate Gilderdale

sound nearly knocks you over. A clerk stares fixedly at her crimson six-inch nails while conducting a long and complex telephone discussion on the status of her current beau.

Undaunted, you browse among the racks, along with fellow shoppers whose average age must be all of 13.

Having selected the maximum number of garments you're allowed to take into the change room, you suddenly find yourself surrounded by a veritable army of assistants, who seem to have materialized out of thin air, and who are now prepared to fight tooth and nail for your previously unsolicited custom.

With a sigh of relief you stagger into the three-by-three-foot cubicle, scraping your elbows on the walls, only to find that the mirror is on the outside.

At this stage you're already in the early throes of hysteria. How can you go home empty-handed after spending an entire day at

the mall? Can you really face another battle of the zips and buttons trying on other outfits which will be:

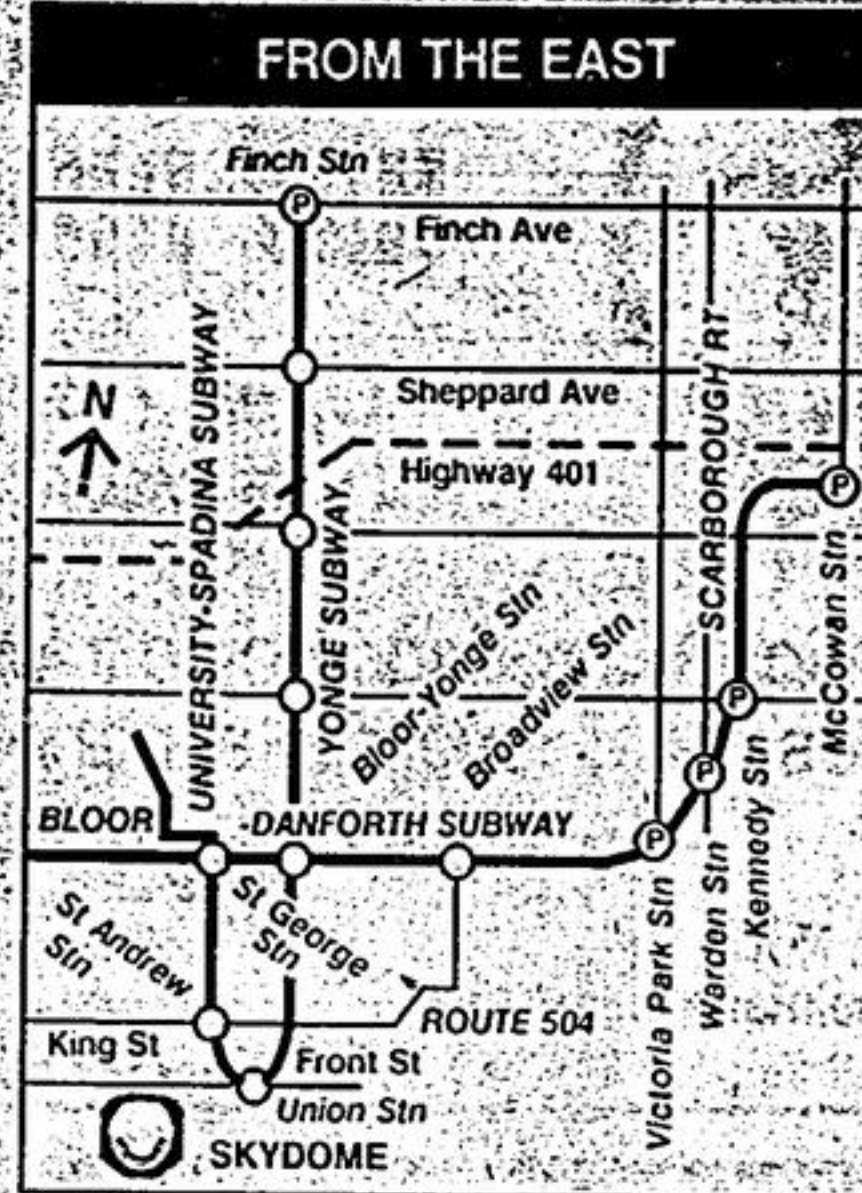
- Too small.
- The wrong color.
- Never, ever worn.

At the end of the day, after the above scene has been re-enacted countless times, you leave the mall clutching an armful of groceries and bags of children's clothing.

You'll easily locate your car now that everyone's left to watch SkyDome's open roof, drench spectators and performers on network T.V. and you drive home a sadder, but (temporarily) wiser person.

"When the going gets tough," claims the car sticker, "the tough go shopping. Even Rambo would turn jelly-faced with the subtle psychological warfare, waged in the name of Canada's number one pastime."

TO THE DOME AND HOME.



Take the Scarborough RT to Kennedy Station, where you board the Bloor-Danforth subway, or you can park (P) at McCowan, Kennedy, Warden or Victoria Park Station.

Transfer at Bloor/Yonge to the south-bound Yonge subway to Union, and walk west to the Dome.

You can also take the 504 (King) streetcar from Broadview Station, stopping at John and Peter Streets. It's a short walk south from there to the Dome.

Here's a handy map that shows you The Better Way to the Dome and Home.

So, cut-out the map and take TTC's convenient and frequent services and enjoy SkyDome.

For further information call 393-INFO.



THE BETTER WAY TO SKYDOME.

Prismatic Decorating Centre



Offer held over until June 17

SAVE UP TO \$4.00 REGULAR PRICE \$34.95



Latex Exterior Primer
 • Excellent hiding and leveling
 • Recommended for use under latex paints
 • Resists blistering on new construction
 • Minimizes staining of new cedar and redwood

Moorewhite Primer
 • Excellent hiding and leveling
 • Can be used under both latex and oil based paints
 • Provides a uniformly sealed surface for prepared chalky and weathered surfaces
 • Resists mildew



MOORWOOD EXTERIOR STAINS
 Quality, Protection & Natural Beauty

SAVE UP TO \$700



solid color exterior stain
 • Masks wood grain, enhances texture
 • Resists cracking, peeling, blistering
 • For shakes, smooth siding, saw-textured lumber, fencing
 • Rich, rustic colors

MoorGard LATEX HOUSE PAINT
 • High hiding, low-alkali stain
 • Long durability and color retention
 • Over 1000 colors and nearly endless color combinations
 • Resists fading, blistering and staining

MoorGlo LATEX HOUSE & TRIM PAINT
 • Outstanding color and gloss retention
 • For all types of exterior surfaces
 • Outstanding gloss and color retention
 • Resists fading, blistering and staining

Moore's HOUSE PAINT
 • Available in high gloss, weather resistant finish
 • Extremely durable with excellent weathering and leveling properties
 • Resists chalking and rusting

Prismatic Decorating Centre

33 Bridal Trail Unionville

Mon., Tues., Wed., Sat., 9 - 5:30

475-7259

Thurs., 9 - 8

Fri., 9 - 6

Doing Landscaping?

Dirt, timber, sod, broken cement, extra trash

Call us for a residential container



You load - We haul containers
PINK FLAMINGO III INC.

888-9030

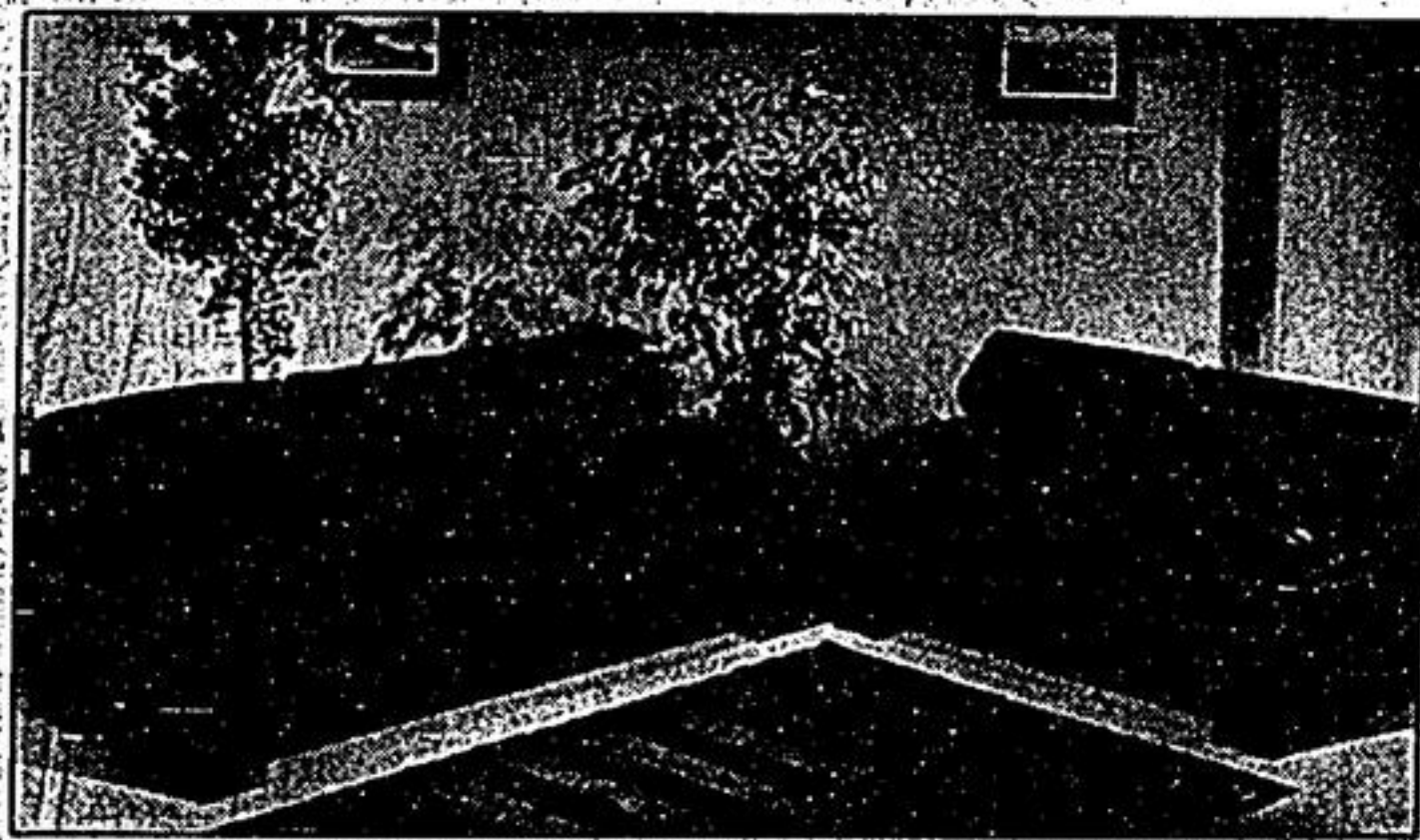


BULK LANDSCAPING MATERIALS AVAILABLE

FURNISHINGS 2001

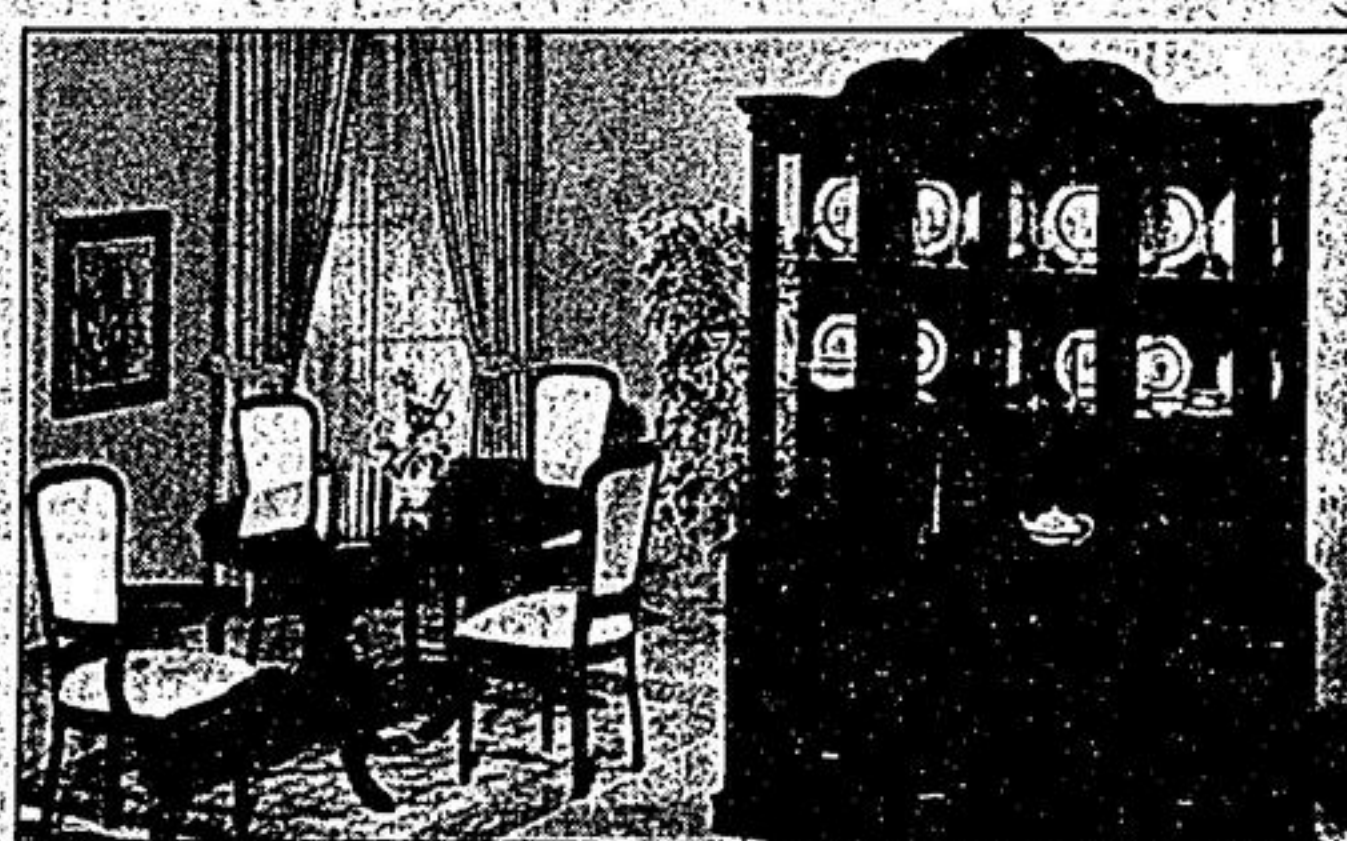
We feature brand names like Sealy, Leda, Craffline, Daveluyville, Statum Designs.

Sealy posturepedic mattresses, designer accessories large selection of custom made furniture.

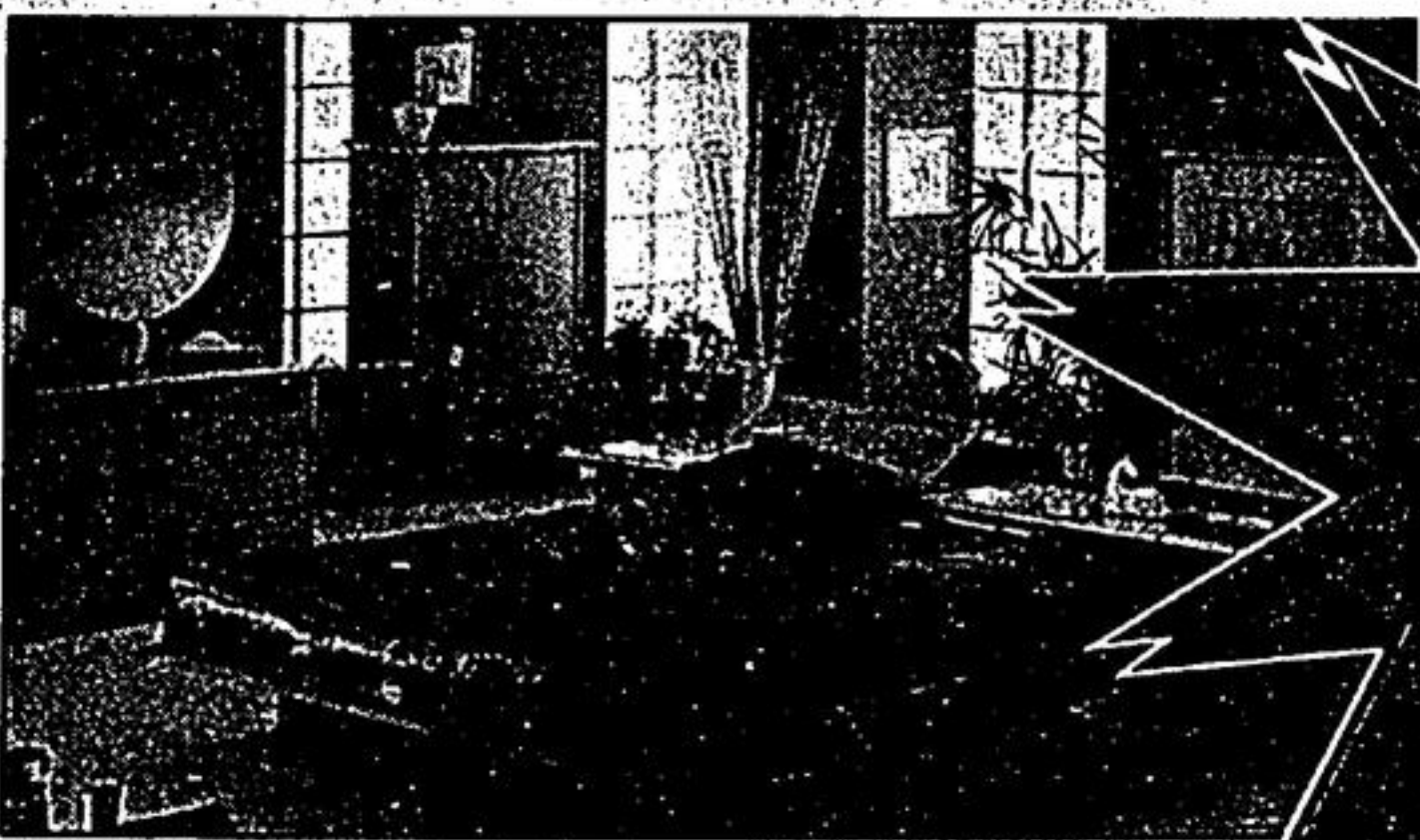


LEATHER SOFA BY SEALY

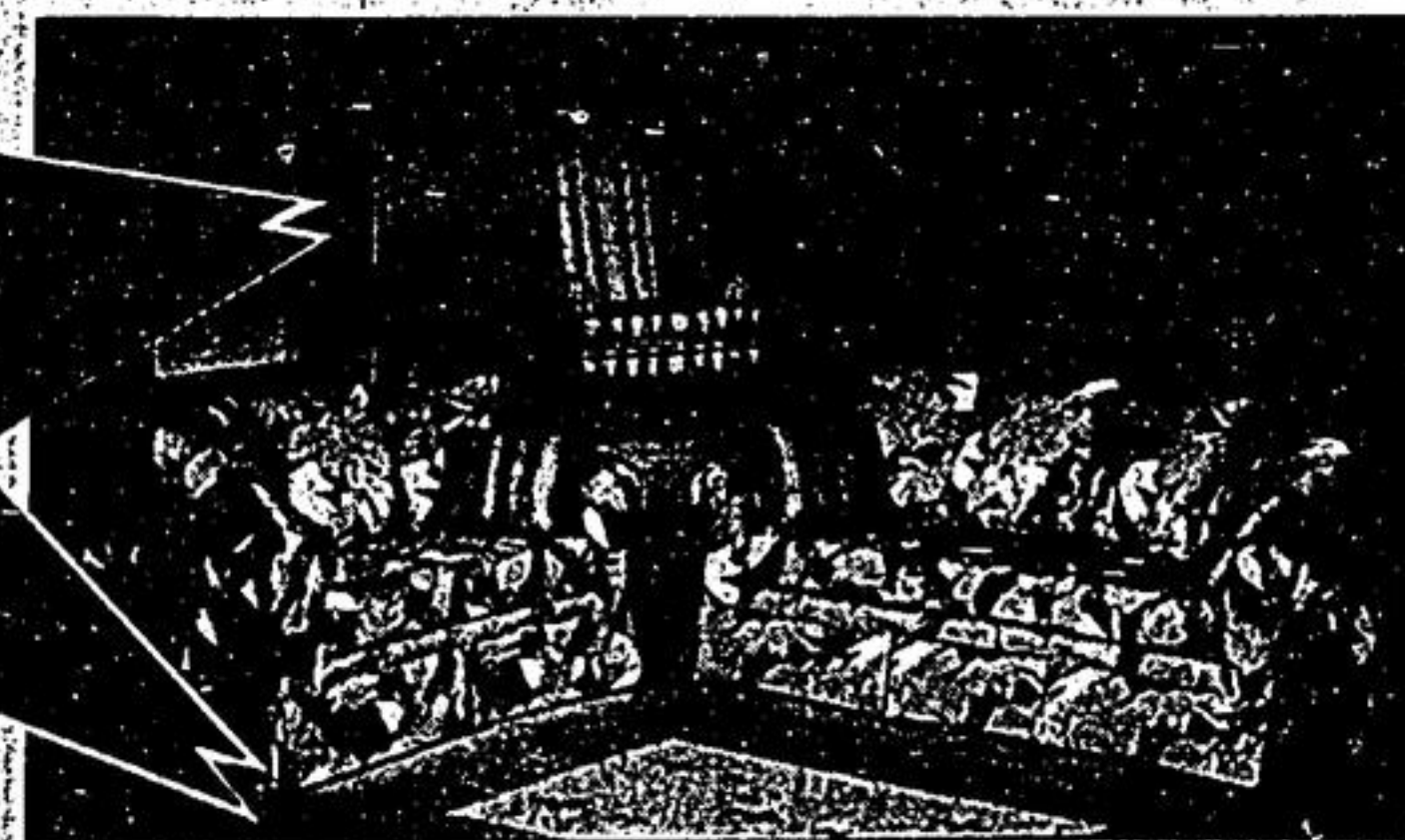
SPECIAL INTRODUCTORY OFFER



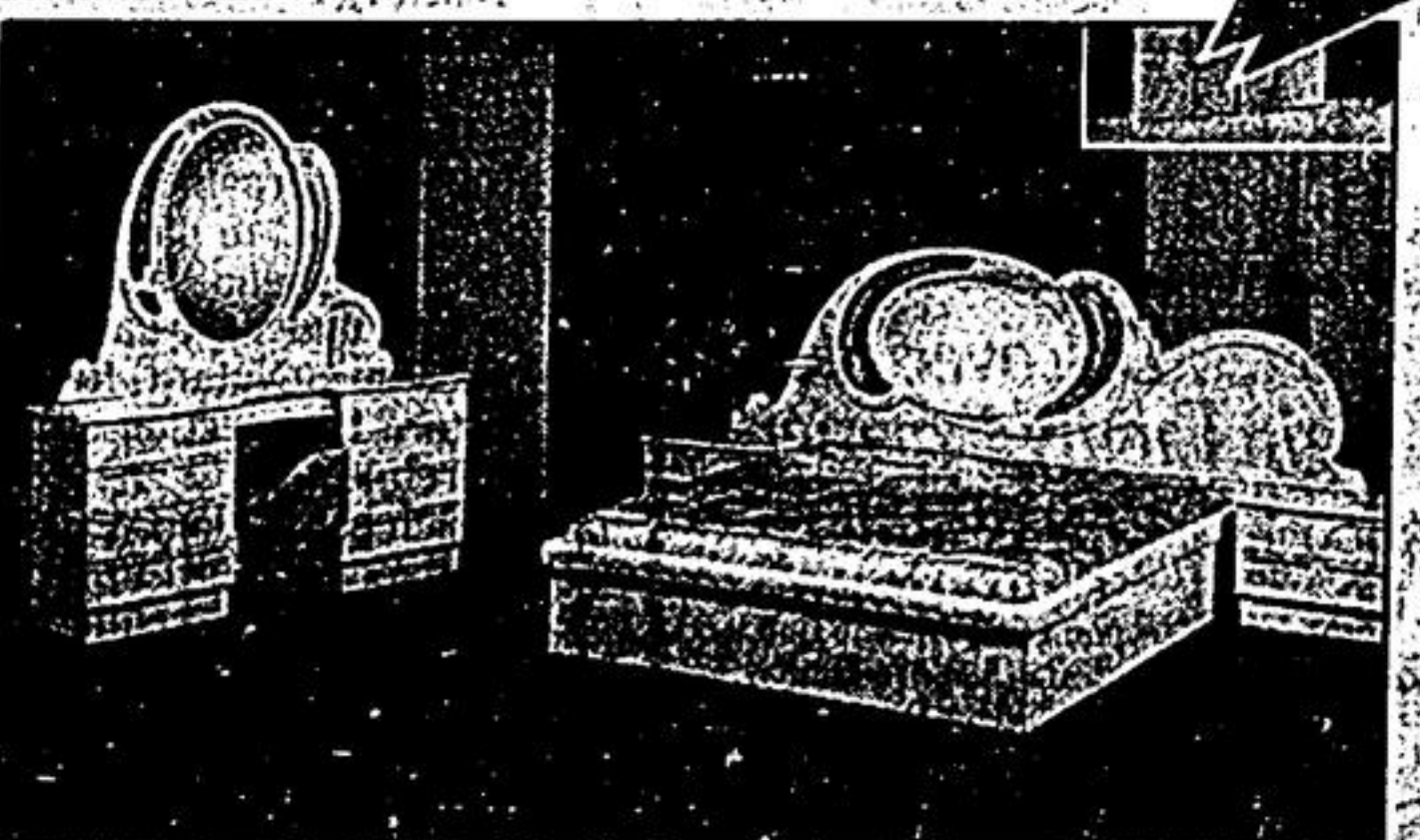
MAHOGANY DININGROOM SUITE



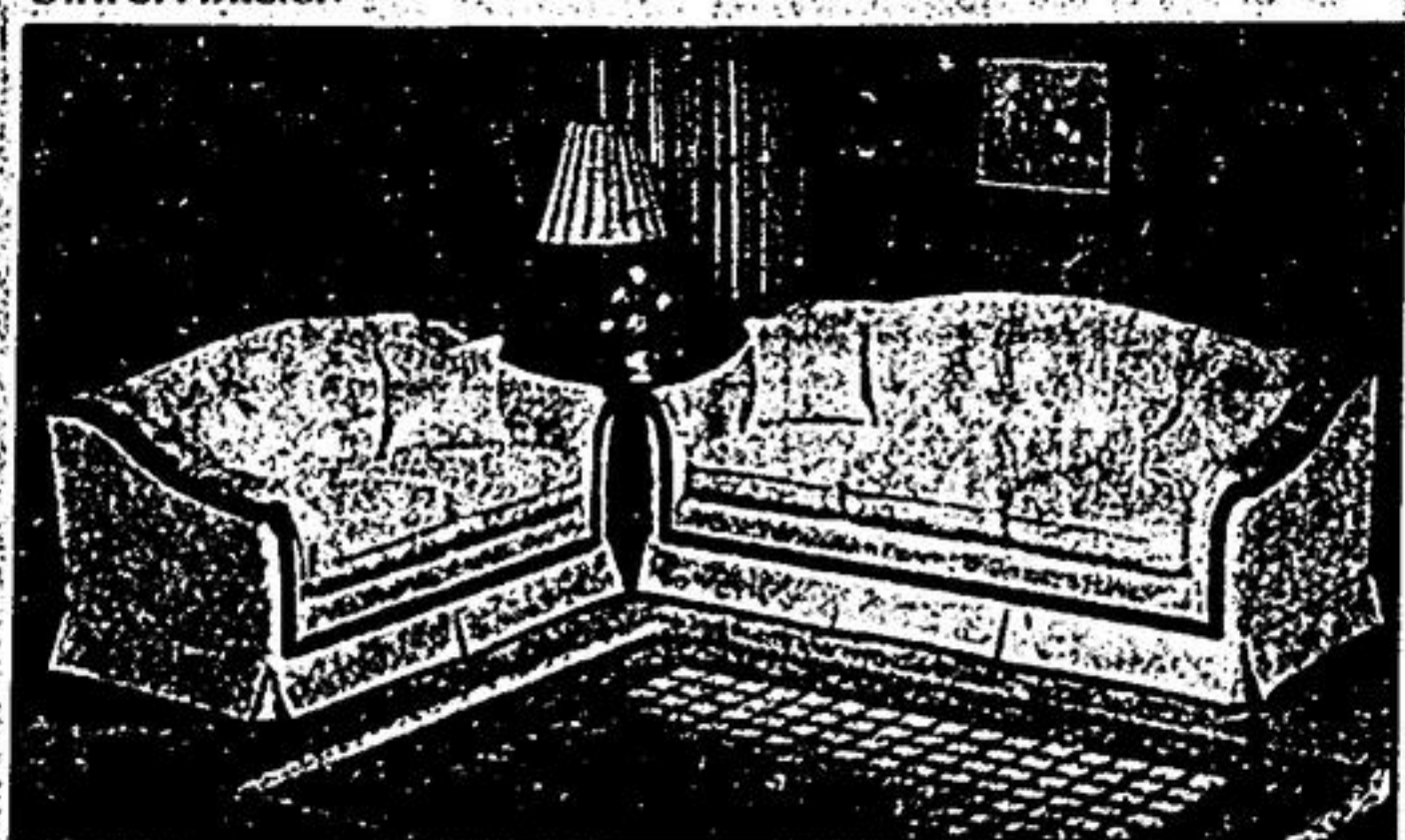
WASHED OAK CONTEMPORARY BEDROOM SUITE BY DAVELUYVILLE



CONTEMPORARY DESIGN EXTREMELY COMFORTABLE BY STATUM DESIGN



ELEGANT IMPORTED ITALIAN BEDROOM SUITE



TRADITIONAL SOFA BY STATUM DESIGN AVAILABLE IN DIFFERENT FABRICS & COLOURS



FREE DELIVERY IN TORONTO AREA
 8407 WOODBINE AVE
 MARKHAM, SOUTH OF HWY 7

JUNE 10, 1989

499-2001