

Anti-abortion drive starts anew. Page A-3



MPP offers his budget views. Page A-5



Local kids are 'sneaky' See Page A-3



Beautiful Jewellery
Barthau JEWELLERS
5 Main St. W., Stouffville 640-4646

The Tribune

Serving Whitchurch-Stouffville & Area

Countrye Tyme Realty Ltd.
COUNTRY PROPERTY SPECIALIST 640-5090
JOHN WHYTALL

VOL 102 NO. 22

A Metroland Community Newspaper

Wednesday, May 31, 1989

30-60 pages

50 Cents

Initial go-ahead

Town considers new hazardous waste program

By DENISE McDONALD
Correspondent

Whitchurch-Stouffville Town Council has agreed in principle to support the implementation of a hazardous waste collection program this fall.

Proposed at last Tuesday's Council meeting by Recycling Group representative Doug Hickman, the Town will co-sponsor a one-day collection of household hazardous waste within the area, providing a 25 per cent commitment to funding can be accommodated in the 1989 budget.

It was indicated the Group would match that 25 per cent. According to Mr. Hickman, the collection would be accomplished by contracting a licenced hazardous waste handler/hauler who would establish a depot where residents could bring their household wastes.

"This company would be responsible for the environmentally sound collection, recycling and disposal of these wastes," he said.

Mr. Hickman pointed out the cost of the program would depend on the amount collected. However, experience over the last six years have indicated total costs would not be expected to exceed \$20,000.

"The Ministry of the Environment has estimated, on average, Ontario households generate three kilograms of household hazardous waste per year," he said. "On this basis, it can be estimated 7.5 tonnes of hazardous waste is generated in Whitchurch-Stouffville annually."

However, it was pointed out this figure was a minimum estimate because farming communities have been known to generate larger amounts due to farm machinery maintenance activity and the use of agricultural chemicals.

"Household hazardous waste is comprised of any materials which, by virtue of their chemical composition, pose an immediate or potential hazard to human health or the environment," Mr. Hickman told Council members.

Included are pesticides, insecticides, paints, oil, solvents, high strength cleansers, and others.

Because town policy does not allow this type of waste to be disposed of in green garbage bags due to incidents of worker injury, residents opt to pour them on the ground or in sewers, council heard.

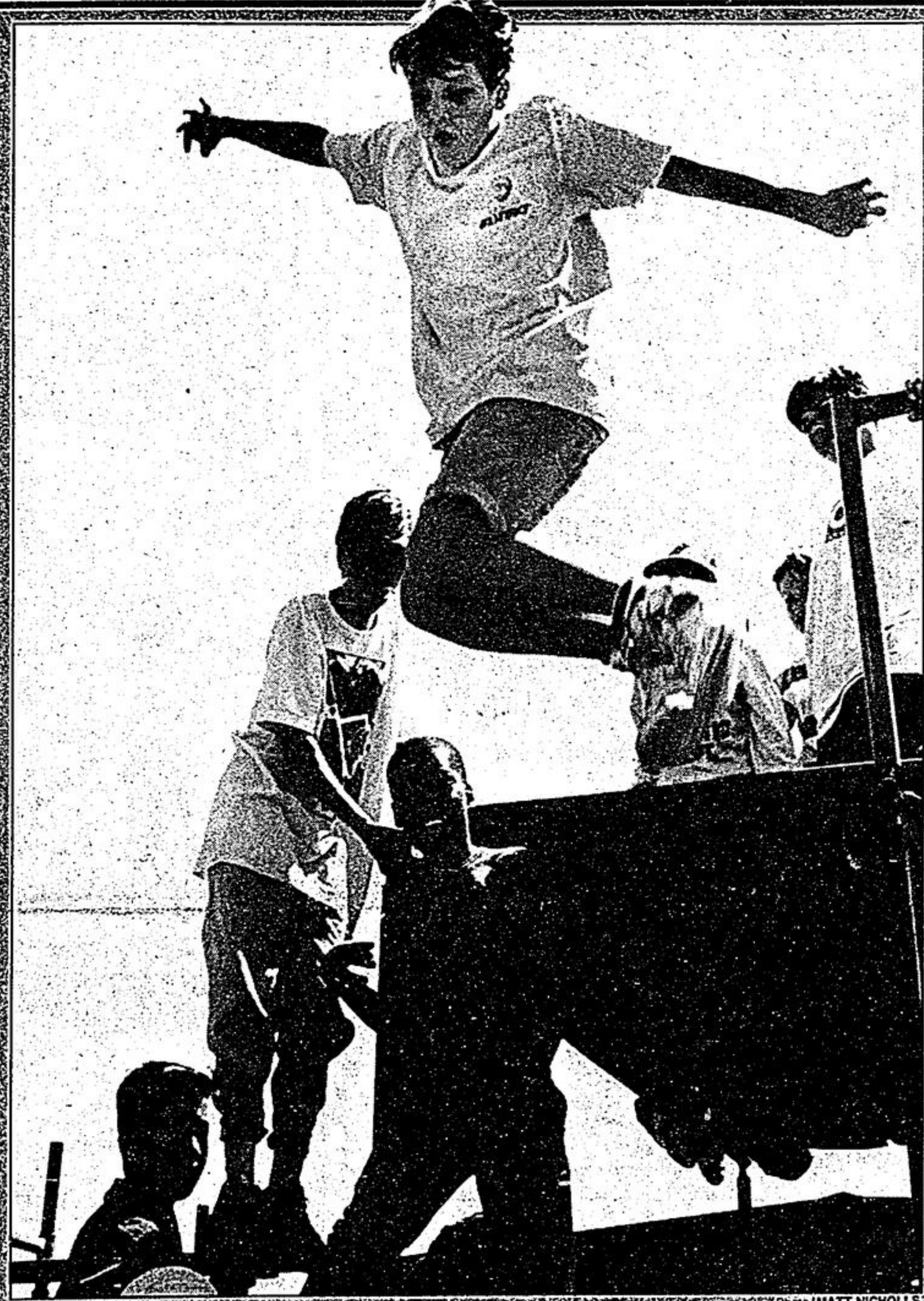
"Our existing waste management system is not capable of handling these materials," said Mr. Hickman. "Therefore, this is an excellent way to gather and dispose of this waste and launch a more permanent program."

As well as approaching the Town to commit to 25 per cent of the program — up to \$5,000 — the Recycling Group has asked Council to submit an application to the Ministry of the Environment to support the remaining 50 per cent.

Possible sites for the location of the depot are yet to be determined. However, the fire hall, the site of the old arena, or the public works yard/recycling depot have been suggested.

The Recycling Group's role will be to conduct publicity and awareness of the campaign; to bring people to the depot," said Mr. Hickman. "The group has amply demonstrated its competence in this regard. Whatever problems were associated with the blue boxes, everyone knew about them."

Said Councillor Nick Tatone: "I'm pretty pleased about the proposal. One of the issues in my campaign was chemical management. Education is the lever to these kinds of programs. It's too bad we're only striving to do it once a year; it should be twice."



Jumping into shape

Students at St. Mark's Catholic School in Whitchurch-Stouffville got the jump on fitness Monday morning by taking part in various activities to highlight the importance of staying in shape. Here student Trevor Hoad, 12, prepares to land on a foam mat after jumping from this raised platform as fellow students look on. Students took part in a number of fitness-related activities after inclement weather postponed the events planned for last Friday.

Library study looks to future

Whitchurch-Stouffville residents will get a chance to tell library officials how the town's library stacks up within the next few weeks.

A needs feasibility study is about to get underway, consisting

of a questionnaire mailed out to all town residents, 175 "user interviews" and 150 phone interviews.

According to library spokesman Marilyn Ferguson, the study will inform officials of the adequacy of current library and art gallery services, resources, programs and facilities, as well as providing a guide for development and improvement through to 1998.

"I think it will give us some direction," says Mrs. Ferguson. "The taxpayers should be taxed for services they want."

The provincial Ministry of Culture and Communications will contribute \$11,300 towards the study with a grant, through its Community Facilities Improvement Program.

The province has also agreed to pay one-third of any library ex-

pansion projects resulting from the study, while the town has earmarked \$25,000 for the same purpose.

The Toronto firm of Chase, Fox, Jones and Associates has been hired to conduct the study, which will be carried out in two phases.

The first phase, to begin in June, will see town residents give their views on existing facilities, along with suggestions for change.

Phase two will determine if new facilities, such as an addition to the existing building, a new branch or a bookmobile, are required.

A public meeting will be held to help determine what, if any, new facilities will be built.

Mrs. Ferguson feels the new study is vital in light of the increase of library use in the past

few years, as well as the town's growth.

"In the past 10 years Whitchurch-Stouffville has grown by around 25 per cent and the library's circulation has also increased by 25 per cent," she said.

The library currently contains 30,000 volumes of material and boasts a membership of 4,500. The annual circulation rate is 101,000 volumes.

According to Mrs. Ferguson, a March, 1989 study showed Ward 5 residents were the most active library users, with Ward 6 second and Ward 4 third.

The study will also help library staff assess new trends that have resulted in hardcover books giving way, in part, to videos, talking books and "how-to" manuals.

"Users are becoming more sophisticated," she says.

SDSS aims for 'wellness'

By MATT NICHOLLS
Correspondent

A new council will be formed at Stouffville District Secondary School in the fall to help promote physical fitness within the school.

The new council, called a "wellness council," will consist of five students and one teacher, says Newmarket High School teacher Sandra Bush. She'll be coming to SDSS in the fall to coordinate the project.

The council will try to get other students more involved with

physical fitness activities, she says.

Currently, Ontario secondary school students need just one physical education credit to get their OAC diploma and most don't continue in physical education after Grade 9, Ms. Bush says.

"This council will help students maintain a good fitness level," she says.

"The council will work together to design physical fitness programs for the rest of

the school," Ms. Bush says. "Students will be selected by staff and will not necessarily be physical education students."

"They aren't always the most fit," she adds.

The new SDSS wellness council is just one of 26 similar councils being incorporated into York region high schools this fall.

"It's important to get an early start to healthy living," says York North MPP Charles Beer of the program.



It's official!

Stouffville's Buckingham Manor was officially opened last Friday with a ribbon-cutting ceremony attended by local dignitaries. The refurbished building, which offers seniors an elegant and charming residence, underwent extensive renovations in recent months. Making it official are (from left) Whitchurch-Stouffville Mayor Fran Sainsbury, Buckingham Manor Co-owner, Manny Simon, Lynette Goodeve (representing Durham York MPP Bill Ballinger) and Markham Riding MP Bill Attewell.