

## New centre to dance

After what director Michele Green describes as "a three-week marathon" of preparation, Stouffville's DanceCentre opened its spacious new facility on Commercial Street on Monday, March 27.

It's a big move forward, with an increase in space to 2,400 square feet from 1,600 for the thriving studio, which offers jazz, ballet and tap for young students as well as adult fitness classes.

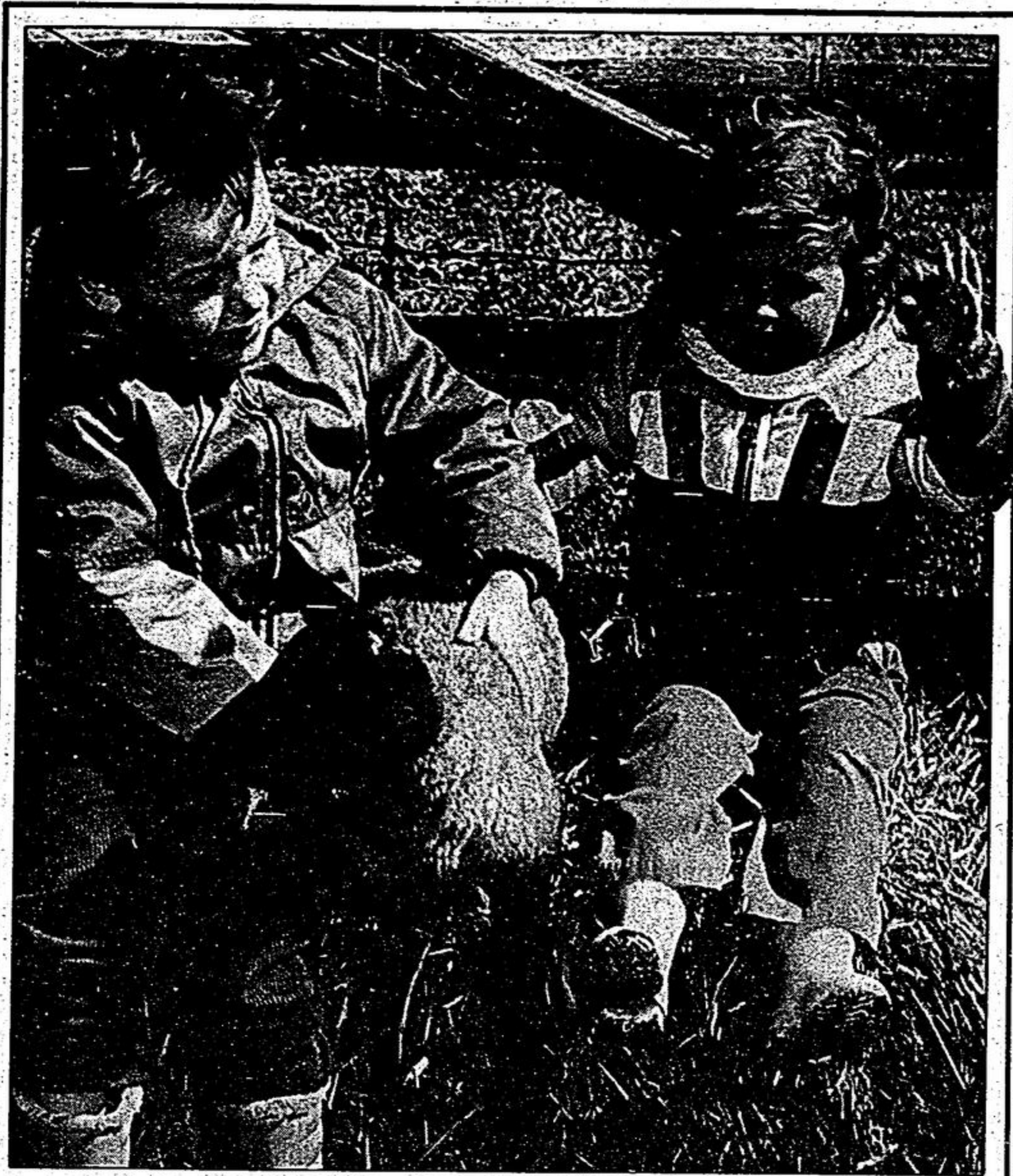
Leading from the outer cloakroom is a comfortable waiting area with chairs, two washrooms and three change rooms.

Also on the ground level is a small studio, while the main studio is on the second floor, together with Michele's office and an additional washroom. The painting and decorating was done by Michele, husband Jim and friends Sue and Hank Rutan. "There's no way we could have done it without their help," she says.

With Jim and Hank coming in every evening and working non-stop, it was a nerve-racking race against time, she admits.

She praises A and S Construction, which pulled out all the stops to complete the facility and G and R Flooring, which worked through Good Friday to allow her to open the following Monday. Building owner David Barthau also has been very supportive, stresses Michele.

The cool greys and blues of the decor give a fresh and airy atmosphere and the upstairs studio boasts full mirrors on both sides, which add to the feeling of spaciousness. "I'm just glad to be settled here," concludes Michele. "It's going to be great to have the extra space and still be in the centre of town."



"Never mind waving, give me a hand!"

April 1 was 'Open Barn Day' on the property of Alan and Esther Powell, 19th Avenue, R.R. 2, Markham. During a five-hour period, more than 80 parents and children dropped by the see

the new-born spring lambs including Matthew Stellan, Thicketwood Blvd., and Jocelyn McDowell, Millard Street, Stouffville.

—Jim Thomas

## Estate homes a golf drive away

WHITCHURCH — Acres of green grass attract the most discriminating of home-buyers.

Little wonder would-be residents are casting envious glances towards Emerald Hills Estates, Warden Avenue,

Whitchurch-Stouffville. Twenty estate homes will be located there, bordering the fairways of Emerald Hills Golf and Country Club.

The lots are one acre in size. The houses are 4,500 square feet and larger.

Prices start at \$950,000.

With all approvals received, work is expected to begin in June, a spokesperson for Good Homes Inc., 80 Fulton Way, Richmond Hill told The Tribune.

Pre-sales are being handled through Re-Max of Richmond

Hill and Markville, Markham. A sales office is on location.

There are five models to choose from. Changes can be made, however, according to the wishes of the purchaser.

For preview information, the number to call is 471-6600.

## B.I.A. sponsors- A Spring Fling

A Spring Fling in September? Hardly.

Gremlins somehow switched dates in The Tribune's story of March 29 related to the Business Improvement Area's upcoming dinner, dance and fashion show at Sleepy Hollow Golf and Country Club.

The date is really April 15 beginning at 7 p.m.

Tickets, (\$25), are available at

Ancheril's Shoes, Classic Collection, Josephine's Fashions & Petite Collection, Graylane Boutique, The Snowbird, The Villager, The Wedding Room, Freckles, The Good Mother, Bermuda Casuals and Sarah Patricia's.

Proceeds from the event will be used to further improve Stouffville's downtown business area from Albert Street to Park Drive.

# WHAT DO YOU REALLY KNOW ABOUT WHERE YOU LIVE

Can you answer these questions?

- 1 What does your municipal clerk do?
- 2 When do you need a building permit?
- 3 How can you make your views known to your council?
- 4 How do zoning by-laws affect you?
- 5 Who can vote in local government elections?
- 6 Who is your councillor?
- 7 Who is your school board member?
- 8 What does a Committee of Adjustment adjust?
- 9 Where does your local government get its money?
- 10 What happens if you don't pay your property taxes?

Find the correct answers, and much more about the community you live in, during

## LOCAL GOVERNMENT WEEK APRIL 10-15

It's the time to find out how your community works for you.



Ministry of  
Municipal  
Affairs  
Ontario John Eakins, Minister

In support of your Local Government Week Celebrations.

# Spring Sale

D Cellular look-alike antenna for CB

**SAVE 33%**

H CB radio fits under dash

**SAVE \$30**

E Personal portable

**SAVE 35%**

I AM/FM all-band portable receiver

**SAVE \$60**

A Mach 6000 speakers

**SAVE \$400 pair**

K AM/FM car cassette player

**SAVE \$60**

F Selection of headphones

**SAVE 50%**

L Diskette storage boxes

**SAVE UP TO 40%**

B Dual-cassette portable

**SAVE \$40**

M Save on double-sided diskettes

**SAVE UP TO 50%**

C AM/FM-stereo portable

**SAVE 25%**

N MS-1800 stereo system

**SAVE \$300**

G 60 cassette wall unit

**SAVE 26%**

O Digital multimeter

**SAVE 25%**

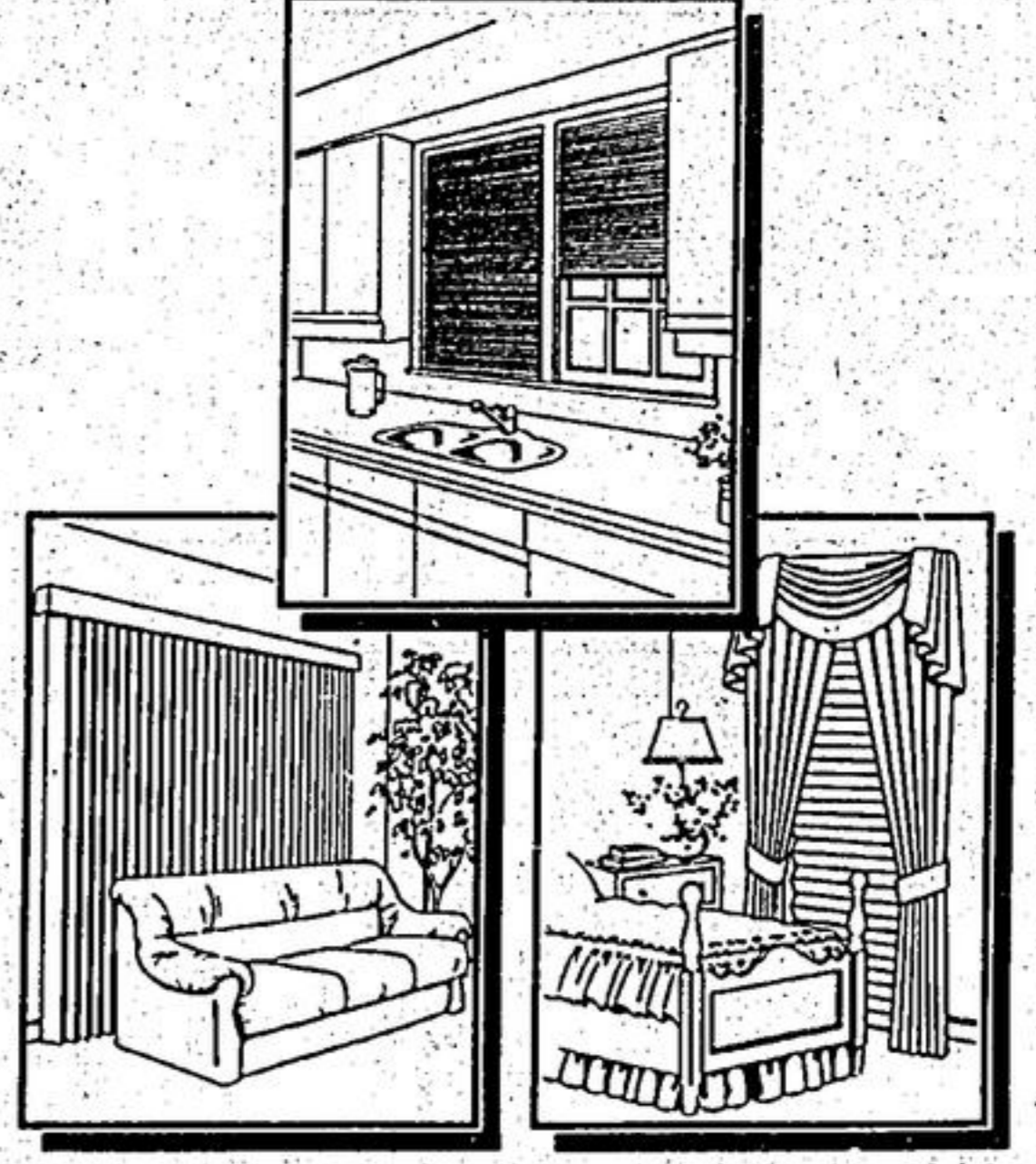
- A) RPH\*:200 watts. 40-8043. Regular 499.95
- B) Synchro-start dubbing. 14-754. Regular 139.95
- C) Compact size. Lightweight, with strap for easy carrying. 12-722. Regular 39.95
- D) Magnet-mount base. 21-992. Regular 44.95
- E) Tape player (14-1039) with light-weight headset (33-2002). Reg. sep. items 90.00
- F) Yellow, blue, red, green. 33-8201/2/3/4. Regular 9.95
- G) Holds all your favourites. 44-8025. Regular 22.95
- H) Compact. LED meter. 21-1509. Regular 99.95
- I) With 9-station memory. 20-221. Regular 299.95
- J) Digital tuning. 12 presets. 12-1924. Regular 159.95
- K) 5 1/4" box holds up to 50 disks. 26-1362. Reg. 24.95
- L) And 3 1/2" box holds up to 30 disks. 26-1381. Reg. 19.95
- M) 5 1/4" error-free diskettes. 10-pack. 26-412. Reg. 18.95
- N) 3 1/2" error-free diskettes. 10-pack. 26-418. Reg. 49.95
- O) With 5-band equalizer, dual tape deck. AM/FM-stereo, turntable, and two matching speakers. 13-8101. Regular 899.95
- P) Measures up to 1000 volts DC and 500 volts AC. Diode check mode. 22-188. Reg. 59.95

Sale prices expire April 30, 1989. Rain checks will be issued if an item is sold out. We reserve the right to correct typographical errors. Batteries/tapes/diskettes/records not included unless specified. \*RPH: recommended power handling.

# Radio Shack

Check the white pages for the Radio Shack store or participating dealer nearest you

## WE DO WINDOWS FOR LESS!



## \$150 CASH BACK

During April, SAVE up to 30% off regular department store prices on selected custom drapery fabrics and blinds.

In addition to these special savings, you will receive \$150 cash back on your purchase of \$2,000 or more.

EXAMPLE	
Reg. dept. store price...	\$3,000.00
LESS: up to 30% .....	\$900.00
CONTOUR SALE PRICE	\$2,100.00
LESS: April's cash back ..	\$150.00
<b>YOU PAY ONLY .....</b>	<b>\$1,950.00*</b>
<b>YOU SAVE .....</b>	<b>\$1,050.00</b>

\*Not all products are 30% off

Call today for a COMPLIMENTARY in-home consultation

- Richmond Hill 883-9922  
Major MacKenzie & Bathurst  
Woodbridge 239-8194
- Thornhill 764-3010  
7787 Yonge Street  
Markham 471-6565  
Village Shoppes

## CANADA'S LARGEST WINDOW COVERING SPECIALIST

# CONTOUR

WINDOW FASHIONS