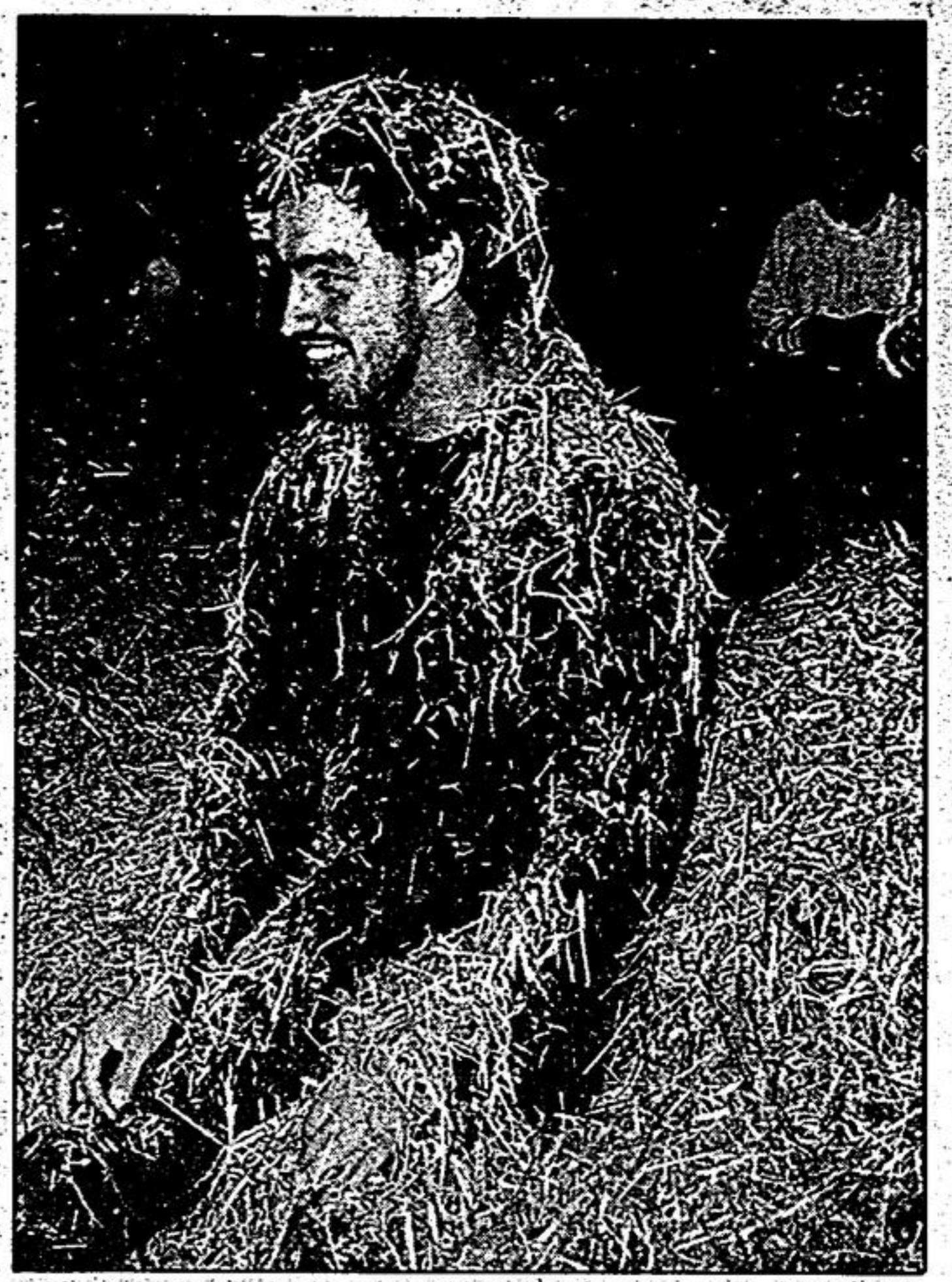


Bales of fun on carrier appreciation day



Above, carriers and their district managers hopped on the hay wagon for a ride '80s style — drawn by tractor instead of horse. Driving the

tractor is Willowgrove day camp employee John Harder. The camp is on McCowan Rd. south of Stouffville Rd.

District Manager Shawn Lyons is all covered in straw after a hay tussle with Economist and Sun and The Tribune carriers. The kids and their supervisors spent the afternoon at Willowgrove day camp in appreciation of their service to the newspapers.

SRVS is skeptical

DEB BODINE CHAMPION
Correspondent

Save the Rouge Valley System chairman Jim Robb is sceptical about the Ontario government's well-hyped, carefully-orchestrated announcement last week.

He says he is "happy to see they're focusing on recycling, recovery, re-use" but is concerned they are "glossing over some very sensitive issues."

Like the future of the Rouge Valley.

When pressed for details at last Tuesday's meeting, Robb says Premier David Peterson replied that his government would "save the Rouge," but that it is not "prejudicing any landfill sites."

Robb is worried that the Rouge Valley will be re-introduced as the Metro contingency site should the waste management system not be operational by 1992.

Making matters worse, says Robb, is a proposed procedural change in the report that could spell death for the Rouge. To expedite the choosing of landfill sites, the report suggests that the province conduct "a detailed, exhaustive and public environmental suitability examination" of all chosen contingency sites.

By circumventing the already established Environmental Assessment Review process, Robb claims the government is free to "do whatever it wants to do."

"Ontario has one of the better environmental assessment processes. Mr. Bradley (minister of the environment) can be proud of that, but what good is it if it is circumvented every time a difficult situation comes along?" he queried.

By looking at each site individually, without comparing it to other sites that are available, Robb says the government can focus on one thing — "Can we engineer this site?"

"The Rouge is still on the table and that is totally unacceptable to the public," he said.

When SRVS suggested eight months ago that a 30-per-cent reduction in the waste stream could be achieved through recycling programs by 1992, Robb says the politicians "laughed" at them.

"They called us Utopians," he said. Now they are saying 25 per cent is an achievable goal.

Robb submits that choosing 1992 as a target date is a very deliberate political move.

"It's very interesting timing. Before, they said we absolutely had to have a landfill site by 1990. Then they pushed it to 1992 — right after the next provincial election."

The environmentalist is also worried about the strong emphasis on the private sector. Allowing a private enterprise to regulate such an important issue, puts the public purse "very much at the control of a major corporation," he said.

Robb says he is not against involvement of the private sector but he sees a danger in putting all the eggs in one basket. Studies indicate that it is not working very well in the United States, he claims.

GENERAL MOTORS

COME
SWEET
IDEAL

9.9%
FINANCING*

SWEETER

UP TO 48 MONTHS
NO LIMIT ON AMOUNT FINANCED
ON ALL NEW GM CARS
PLUS COMPACT PICKUPS,
JIMMY/BLAZER

OFFER EXPIRES APRIL 8, 1989

SWEETER STILL

PLUS† NO EXTRA CHARGE AIR OR NO EXTRA CHARGE AUTOMATIC
OR UP TO \$1000 CREDIT ON SELECTED MODELS
PLUS†† \$750 CASH BACK ON OTHER SELECTED MODELS.

LOOK AT GM TODAY

* Factory installed air conditioning at no extra charge (OR equivalent M.S.R.P. credit where standard equipment). OR take advantage of GM's \$750 reduction from the M.S.R.P. on Skylark and \$500 reduction from the M.S.R.P. on Celebrity, 6000 and Corsair not equipped with air conditioning. OR automatic transmission at no extra charge. OR take advantage of GM's \$750 reduction from M.S.R.P. on Cavalier, Sunbird, S/T-10, S/T-15, S/T Jimmy and S/T Blazer equipped with manual transmission. OR take advantage of GM's \$1000 reduction from M.S.R.P. on Beretta, Corsica, Tempest, Grand Am, Calais and CK Pickups equipped with manual transmission. † Other applies to specially equipped models of new and unused 1989 vehicles as indicated. Any applicable taxes, including federal excise tax, license, and freight charges extra. Offer valid on retail purchases only. Offer applies to vehicles purchased and delivered between January 9, 1989 and close of business August 31, 1989. On CK Pickups, no extra charge automatic transmission offer applies only to 3-speed automatic transmission. CK Pickups equipped with 4-speed automatic transmission will receive an M.S.R.P. credit equivalent to the 3-speed automatic transmission credit. †† \$750 cash back on 1989 Pontiac Grand Prix, Oldsmobile Cutlass Supreme and Buick Regal. \$1000 cash back on 1989 Pontiac Grand Prix, Oldsmobile Cutlass Supreme and Buick Regal (V6 body front-wheel drive models only). You may receive cash back direct from General Motors, otherwise it will be applied to your transaction. Offer valid on retail purchases only. Offer applies to new and unused vehicles purchased and delivered from participating dealers between January 9, 1989 and close of business April 8, 1989. Offer includes dealer participation. See your participating dealer for full details. ††† 9.9% financing offer available on all new and unused 1989 and prior model year cars, S/T-10 and S/T-15 compact pickups, and S/T Jimmy Blazer purchased from dealer inventory from March 14, 1989 through the close of business April 8, 1989. Offer valid on retail purchases only. Factory orders, fleet orders and retail lease orders are ineligible for this offer. The buyer will be responsible for the payment of applicable taxes, including federal excise tax, license and applicable freight charges at the time of the transaction. Offer available only to qualified retail buyers financing their purchases through GMAC on a maximum 48-month financing contract. EXAMPLE: For \$5,000 financed 48 months at 9.9% A.P.R., the monthly payment is \$379.71. The cost of borrowing is \$3,226.08 on approved credit. All credit applications will be subject to approval by GMAC. See your dealer for details. This offer applies up to the full purchase amount of the vehicle.

