

## INCOME TAX RETURNS

(416) 640-1769  
640-1778

**GEORGE W. BRODIE**  
Certified General Accountant

157 MAIN ST. W.  
STOUFFVILLE, ONT.

## Hospital seeks toys for child patients

By KATE GILDERDALE  
Volunteers at Markham-Stouffville Hospital are appealing for donations from private individuals and businesses to provide new toys and equipment for the pediatric ward.

"A lot of the things we need are pretty expensive," noted committee member Cheryl Flint. "We'd like to get a television set, a VCR and tapes, as well as tables and chairs and good quality toys that will last for a reasonable amount of time." Financial donations are also

welcome, and are tax deductible, Mrs. Flint pointed out.

With the opening scheduled for the fall, time is of the essence, and the committee has already been in touch with large companies in the Markham area, some of whom have provided generous support.

They're also members of the Miracle Mart Club, which enables them to collect \$1,000 for every \$300,000 worth of cash register tapes submitted to the grocery store.

Mrs. Flint urges anyone who shops at the store to drop their tapes off at The Economist and Sun in Markham or The Tribune in Stouffville. Most schools in Markham will also pass them on to the committee.

For those making donations of toys, she points out that the ward will cater to children from infancy to age 14, and that books, board games and puzzles for all ages would also be welcome.

Financial donations will be used by the committee to purchase what they need at wholesale prices wherever possible. "We'll recognize any companies that do something for us."

Toys should be easy to maintain, "we're not too keen on stuffed toys, because they're hard to keep clean," says Mrs. Flint.

The ward, which will start out with 11 beds, is expected to expand to accommodate 40 children eventually. "We'll also need a lot of volunteers," she noted, pointing out that with both parents working, in many families, children will often have no visitors during the day.

If you can help out with a donation, or would like to learn more about volunteering at the hospital, you can reach Cheryl Flint at 294-4342.



4th ANNUAL SHOW  
DEDICATED TO SPORT FISHING

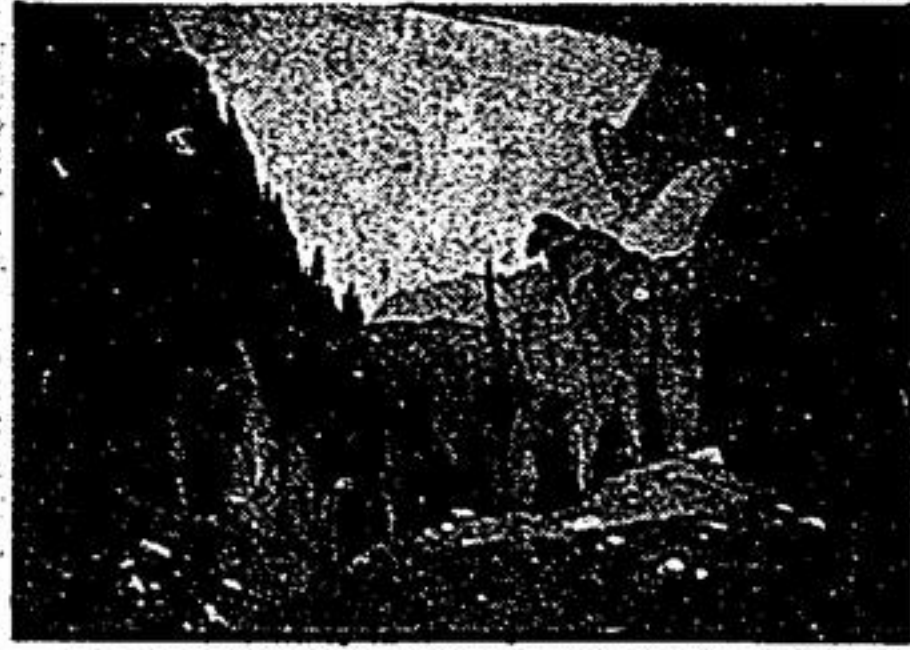
Features  
**BOB IZUMI**  
REAL FISHING SEMINARS

WEDNESDAY FEB. 22 - FRIDAY FEB. 24 12 noon - 10:00 pm  
SATURDAY FEB. 25 10:00 am - 9 pm  
ADULTS \$6.00 SENIORS & STUDENTS \$4.00  
CHILDREN UNDER 12 FREE (if accompanied by an adult)

DON'T LET THE BIG ONE GET AWAY  
AT THE METRO EAST TRADE CENTRE  
Hwy. 401 and Brock Road, Pickering

Canadian National Sportsmen's Shows  
A non-profit corporation dedicated to Canada's Outdoor Heritage.

### A.J. CASSON



PASSING STORM APXX11 S/N  
By A.J. CASSON Size 29" X 31 1/2" (Framed)

From a rare series of ten original graphics produced by A.J. Casson in 1981. Edition of 60 plus 25 artist proofs (AP) all working materials and plates destroyed. Paper aquarelle arches 300 GRS/M2 Neutral pH 140LB. 100% Rag watercolour paper.

The series of ten original graphics requiring as many as sixty-three specially hand-mixed individually laid colours.

NOTE: These are not photomechanical reproductions. The complete series on view at the gallery, each framed to museum specifications and fastidiously presented.

An opportunity to own an original print by the last living member of the group of seven.

Gallery OPEN 9 a.m. - 6 p.m. Mon. to Fri.; 10 a.m. to 4 p.m., Sat. 10:00 a.m. to 4 p.m.



**BUCKINGHAM** 250 Cochrane Dr. #4  
FINE ART LTD. Markham, Ont.  
479-3747

### INCOME TAX TIME WE ARE READY TO HELP YOU

Filling out your Income Tax Return may seem like a lonely business. It doesn't have to be. At Revenue Canada Taxation we understand your needs and we are ready to help you.

Between February 20th and March 31st we are offering group information sessions at the Scarborough District Office for seniors, those in receipt of simple T4 income and those who file only to claim the Provincial and Federal Refundable Tax Credits.

Our specialists will provide these residents of The Scarborough Area with information on how to complete their returns.

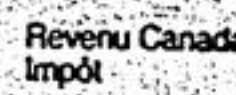
Pre-registration is necessary in order to attend.

### THERE IS NO CHARGE

For further details call

**973-2838**

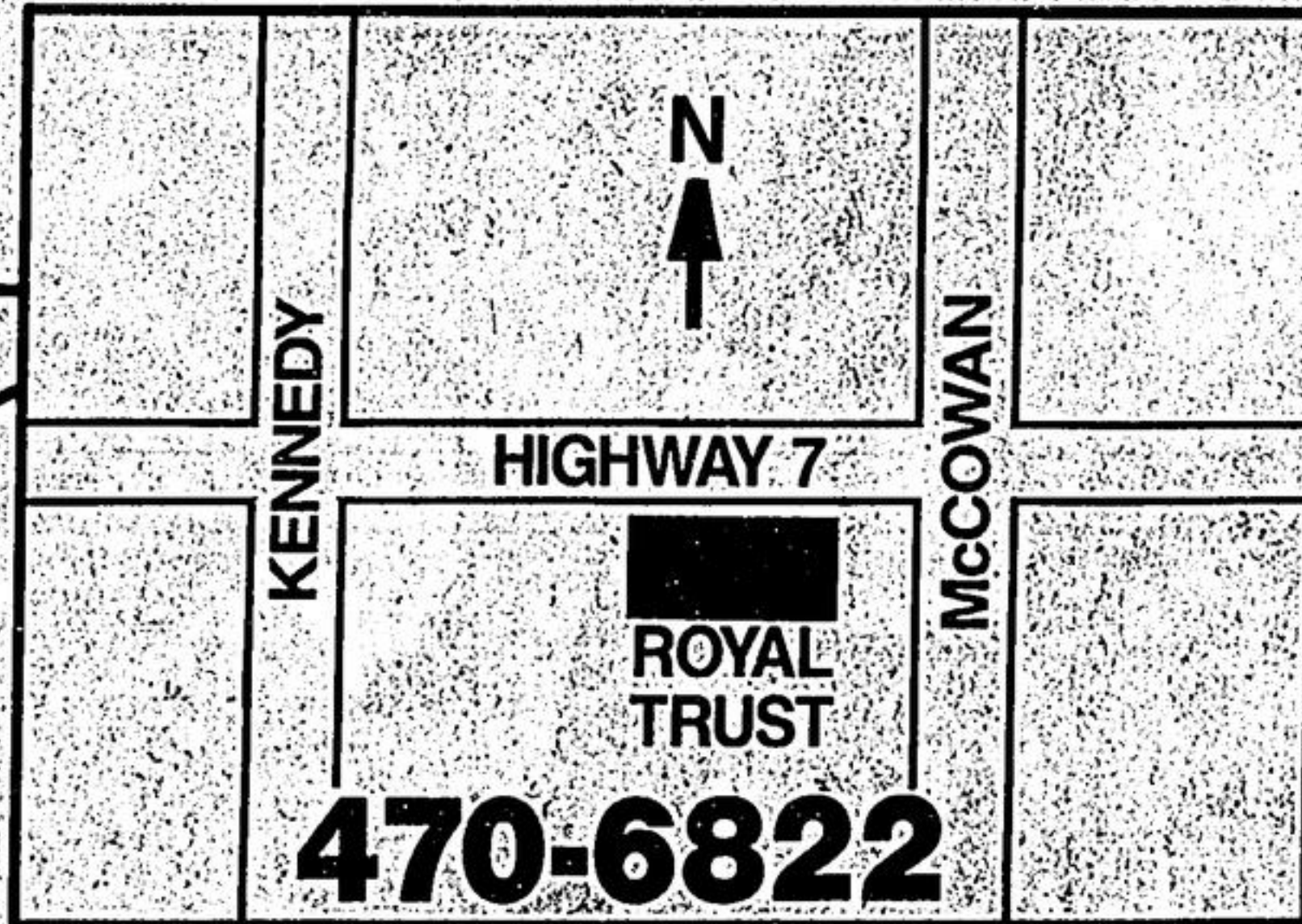
between 9:00 a.m. and 4:00 p.m.



# Follow the Smart RRSP Money to Royal Trust

Call us for our extended RRSP hours.

Ask for your  
chance to WIN<sup>†</sup> an  
IBM Personal System/2<sup>††</sup>  
A WINNER  
IN EVERY BRANCH!  
IBM MODEL 25



<sup>†</sup>No purchase necessary. Contest ends March 1, 1989.

For details, visit us today at: 4961 Hwy. #7, Markham



**ROYAL  
TRUST**

Where advice comes first™

This RRSP Season speak to a Royal Trust Account Manager if you have a minimum portfolio value of \$50,000. And go home with the latest stockmarket game "TAKEOVER", as our gift to you without any obligation. Offer good while supplies last.