

Now! The Standard Trust

MORE FOR YOUR MONEY

RRSP

MORE SERVICES

No fees! Instant Tax Receipts.
No Line-ups.
Instant RRSP Loans

MORE INTEREST

Highly competitive rates.

MORE OPTIONS

Choose your favourite plan:
GIC Plan.
Special Savings Plan.
Short Term Plan.
Self-Administered Plan.



STANDARD TRUST

Member - Canada Deposit Insurance Corporation

Custom Tailored To Your Needs.

39 MAIN ST. MARKHAM N. MARKHAM

RRSP HOTLINE: 294-6865

Call now to save time and avoid line-ups.



Firefighters save Coppins Corners' house

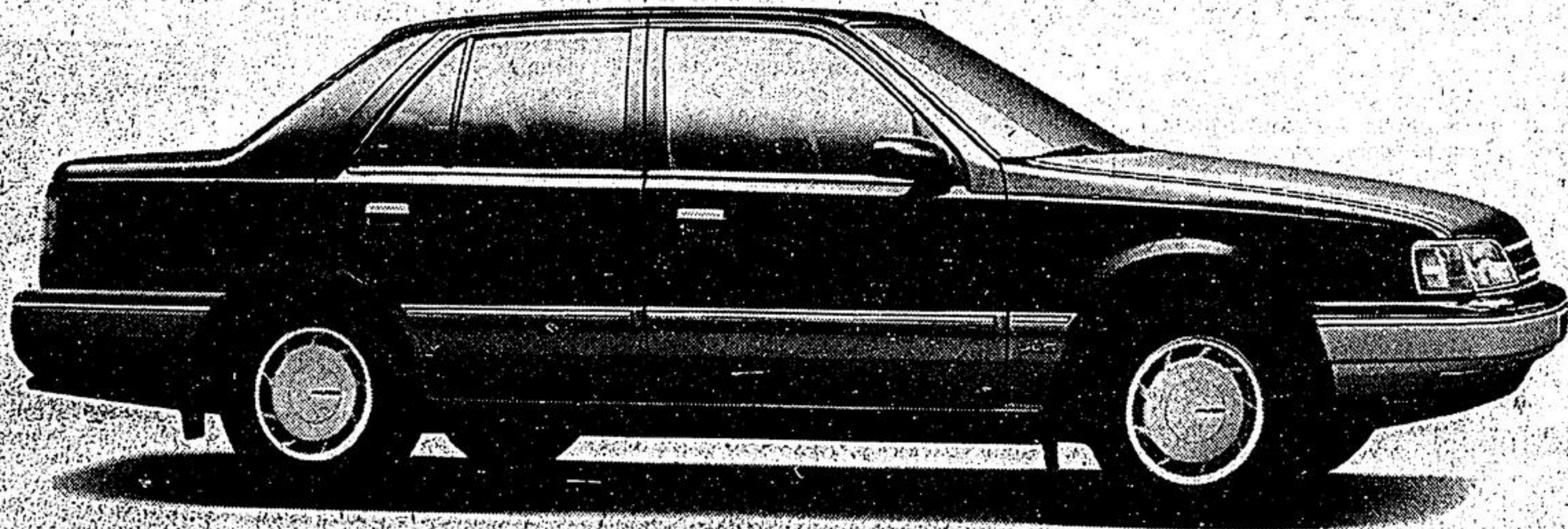
Volunteers from Uxbridge and Claremont successfully battled a house fire that started in an adjacent garage on the property of Jim Auckland, Coppins Corners, Uxbridge Twp. Although the garage was destroyed, the house was saved. — Jim Thomas

Editor's Mail

Is big really better?

Dear Editor:
Rationalization, competitiveness, streamlining, integration, amalgamation, economically viable and retraining — what big words!
Some of these have been manufactured by the business world while others have been known for years. What they usually mean are jobs lost, bigger profits and higher prices to the consumer as competition becomes less and less.
During the past week, we've been confronted by three large take-overs — breweries, gasoline and airlines.
I doubt very much if the consumer will benefit by any of these mergers. What's certain, many workers will lose their jobs.
Real free enterprise in the higher spheres of business and industry is a thing of the past. Now we're controlled by corporate conglomerates who are given free rein by Government to do, more or less, what they like.
According to the industries concerned, the loss of jobs can be offset by early retirement, attrition and re-training. This says nothing for new employment.
Personally, I think the retraining gimmick is more or less worthless.
First, most of those who presumably will be retrained, are people with families with a set style of life, with mortgages to pay and no desire to move to another location where there may or may not be jobs waiting for them and where they may have to start at the bottom again.
After they've been retrained — in what, nobody knows, does the Government know there's going to be a job waiting for them in their new careers and where they now reside?
Who pays for their move and arranges new accommodation? This is all very unsettling for those who lose their jobs.
Whatever way you look at it, business will profit; the worker will lose and the consumer will pay more.
Business says, being bigger makes them more competitive. I say, gobbling up the opposition makes them less competitive.
Sincerely,
Adam Johnstone,
R.R. 1, Stouffville

THE NEW ORIENT EXPRESS.



You don't just drive the all-new Sonata. You travel in it. And you do so in a style to which you will readily become accustomed.
Comfort starts with 10 cubic feet more interior room than you find in Camry and Accord. So you can stretch your legs and elbows, and you don't have to take off your hat!
Power starts with a bigger standard engine than Camry or Accord or Mazda 626; 2.4 litres of overhead cam, multi-point fuel injected,

4-cylinder energy delivers exhilarating power.
Creature comforts are plentiful: AM/FM cassette stereo with 4 speakers, tilt steering wheel and power steering, remote power trunk and fuel door release, and remote dual outside mirrors are all standard luxuries.
And at \$12,990* (which is thousands less than Camry, Accord or 626) you have plenty of money left over to enjoy your travels.
Your Hyundai dealer welcomes you aboard.

Sonata
Settle for more.

HYUNDAI
Cars that make sense.

*Manufacturers suggested retail price for 1989 Sonata GL, taxes, licence, freight and P.D.I. not included. See your individual dealer for freight and P.D.I. charges.

Hyundai of Toronto
955 Eglinton Avenue E.
Toronto 425-4488

Downtown Hyundai
951 Queen Street East
Toronto 461-2323

Auto Trend
11262 Yonge Street
Richmond Hill
884-8841

Agincourt Hyundai
4910 Sheppard Ave. E.
Scarborough 291-2929

Limbert's Motors Ltd.
95 Eagle Street
Newmarket 895-3222

Auto Seven
5829 Hwy. 7
Markham 471-0099

Rotom Hyundai
1957 Eglinton Avenue East
Scarborough 752-4720

Jack Frame Hyundai
285 Old Kingston Road
Scarborough 283-7669

Venmar Hyundai
335 Rexdale Blvd.
Rexdale 748-2555

The cost questioned

Dear Editor:
The Lemonville Cemetery Board's request for financial aid in strengthening multi-piece tombstones is understandable. I question the need.
I wonder if the province fully appreciated the ramifications when this 'order' went out.
There's more than one burying ground involved here. It relates to all cemeteries across Ontario.
The fact a child died under an overturned tombstone is tragic. But freak accidents occur every day. I believe the Ministry in charge of such things overreacted.
Sincerely,
Wilbur Hewston,
R.R. 2, Stouffville

CITY DRIVING SCHOOL

- Registered and approved by the Ontario Safety League to educate drivers in Ontario
- New courses for all ages start every week
- Shop and computer
- Day, evening, Saturdays and vacation breaks
- 25 hours of classroom instruction
- 15 Private driving lessons (Automatic 600 min)
- Enquire about our gearshift course
- Lifetime Membership

REGULAR COURSE FEE \$279

ECONOMIST COURSE FEE \$265
WHEN YOU PRESENT THIS AD UPON APPLICATION

Insurance Save 41%
Certificates Within 21 days or less
Income Tax Fully deductible
CAR Certificates available

2500 Eglinton Ave. E. Ste. 228 (at Kennedy Rd.)
2482 Sheppard St. W. Ste. 55 (Near Varsity/Finch Subway)
2457 Finch St. W. Suite 200/Finch Subway
4154 Midway St. W. (at Sheppard Subway)

FREE Pick up 24 Hr. Service
532-2626 or 532-3656