

## Weekly calendar of events

Each week, The Tribune's Community Focus publishes a Calendar of Events. There's no charge for this service. Individuals or organizations are encouraged to call 640-2100 or 649-2292 no later than the Friday preceding publication.

### Wed. Jan. 18

Tom Anderson and his Lime Ridge Old Tyme Fiddlers will provide the entertainment at the Silver Jubilee Club, Stouffville, Wed., Jan. 18 at 8 p.m.

### Thurs. Jan. 19

The Stouffville Friendship Club will meet Thurs., Jan. 19 at 8 p.m., in the Legion Hall, Ninth Line North. For transportation call Marion Murphy at 640-2443.

A Crafts Program (five-year-olds) begins Thurs., Jan. 19 from 1:30 to 2:15 p.m., at the Whitchurch-Stouffville Public Library.

A meeting of the Durham West 4-H Club leaders will be held Thurs., Jan. 19 at 8 p.m., in Agricultural Office, Uxbridge.

### Fri. Jan. 20

A French Program for children three-and-a-half to five years, begins Fri., Jan. 20 at 10:30 a.m., at the Public Library, Stouffville.

### Sat. Jan. 21

Sat. Jan. 21 is 'Martin Johannesen Night', at Latham Hall, Stouffville. Dinner will be served at 6:30 p.m., with a fun program to follow. Friends of Mr. Johannesen and all persons associated with soccer in Whitchurch-Stouffville are invited.

### Mon. Jan. 23

Seniors are invited to bring their lunch and watch a video in the Silver Jubilee Club, Mon., Jan. 23 at 12:30 p.m. Home Support Services will provide tea and transportation. Persons needing a ride are asked to call 640-6554. Community residents under 60 years are also invited.

The Smile Theatre Company is presenting the 'Skylarks', Mon., Jan. 23 at 7:30 p.m., in the Parkview Village Auditorium, Ninth Line South, Stouffville. Admission is \$3.

### Tues. Jan. 24

The Family & Children's Services of York Region is holding a foster parents' information meeting at the Markham Neighborhood Support Centre, 5871 Hwy. 7 (intersection of Hwys. 7 and 48, Markham) Tues., Jan. 24 at 7:30 p.m. For additional information call Gloria or Darlene at 731-3150 between 9 a.m. and 4:30 p.m.

The Stouffville Singles Support Group will meet Tues., Jan. 24 at 8 p.m., in the lounge of St. James Presbyterian Church, Main Street East, Stouffville. Guest speaker - Rev. Herb Gale.

The annual meeting of the Uxbridge Agricultural Society will be held Tues., Jan. 24 at 8 p.m., in the Agricultural Board Office, Uxbridge.

### Wed. Jan. 25

The Stouffville Art Group will meet Wed., Jan. 25 at 9:30 a.m., in the Silver Jubilee Club, Main and Market Streets. For additional information contact Alma Johnson at 640-2568.

Stouffville seniors wishing to play bridge on Wed., Jan. 25 at 1 p.m., in the Silver Jubilee Club are asked to contact Alma Johnson at 640-2568.

The Whitchurch-Stouffville Historical Society will meet on Wed., Jan. 25 at 7:30 p.m., in the board room of Parkview Village, Ninth Line South, Stouffville. Lumbering in Whitchurch will be the topic of interest and discussion.

# Farmers benefit from machinery legislation

Tough, new farm machinery legislation which strengthens warranties and requires the provision of emergency repair parts has received final legislative approval.

The Farm Implement Act also provides for the repair or replacement of a new farm implement which fails to perform during its first 10 days or 100 hours of actual use.

The Act received royal assent on Dec. 15, 1988.

"This is an important piece of legislation that provides farmers

with significant new rights," said Agriculture and Food Minister Jack Riddell in a press release.

"Farmers spend more than \$250 million a year on farm implements and repair parts and need protection on these large investments."

The legislation provides a formal process for the resolution of problems encountered in the sale, service, maintenance, safety and warranty of farm implements.

In addition, it creates the Ontario Farm Implements Board,

which will register dealer and distributors of farm implements, mediate disputes between purchasers and dealers or distributors, and supervise safety measures relating to farm implements.

Standardized sales contracts and minimum warranties will also be required under the legislation.

"We developed this legislation in co-operation with industry groups, farm organizations and other ministries," Mr. Riddell said.

## Kids find cow 'amazing'

While the 1988 Markham Fair's "Amazing Cow" at Old MacDonald's Farm looked unlike your average bovine to most veteran farmers, to hundreds of school children it was indeed "amazing."

The exhibit, organized by Dr. Lorne Smith, proved extremely interesting and educational, chairman Don Miller told the Fair's annual meeting last Wednesday.

Dr. Smith explained the many contributions made by the cow to humanity including statistical information on how much it eats, how much it drinks and how much milk it produces.

There were 29 different animals on display.

REUPHOLSTER WITH TOROMARK



### WHY PAY MORE FOR YOUR REUPHOLSTERY?

Toromark Furniture Markham's Oldest Upholstery Shop, in business since 1950.

- Make your old furniture like new
- We offer 6 monthly payments at no extra charge
- Thousands of in-store samples, or call for an estimate
- 5 year workmanship guarantee

YOU MUST SAVE WITH TOROMARK FURNITURE

### Don't Wait Call 294-2581 - 477-2055

**TOROMARK FURNITURE HOUSE**  
#7 Hwy. in Markham just west of 48

REUPHOLSTER WITH TOROMARK

**The VILLAGE BUTCHER & Delicatessen**  
OPEN 7 DAYS

SPECIALS 12.99 - 13.99

Chicken Breast Roast	1.39 - 100 g
Pastrami	1.19 - 100 g
Corned Beef	1.19 - 100 g
Homemade Wiener	1.99 lb - 4.40 kg
TBone Steak	5.85 lb - 12.90 kg
Stew Beef Lean	2.99 lb - 6.60 kg
Sirloin Tip Roast	3.59 lb - 7.90 kg
Ground Beef Lean	1.99 lb - 4.40 kg
Pork Chops Butterfly	3.99 lb - 8.80 kg
Pork Loin Roast (chef style)	2.99 lb - 6.60 kg
Chicken Breast (bone in)	2.68 lb - 5.90 kg
Chicken Legs	.99 lb - 2.18 kg
Veal Scalopini	6.98 lb - 15.40 kg
Veal Stew	3.99 lb - 8.80 kg


50 Lockridge Ave. Unionville (One block west of Warden) **477-9591**

## Is your child ready for end-of-term examinations?

We offer a full range of pre-examination, comprehensive reviews and study strategies in all subjects for grades 9 to 13.

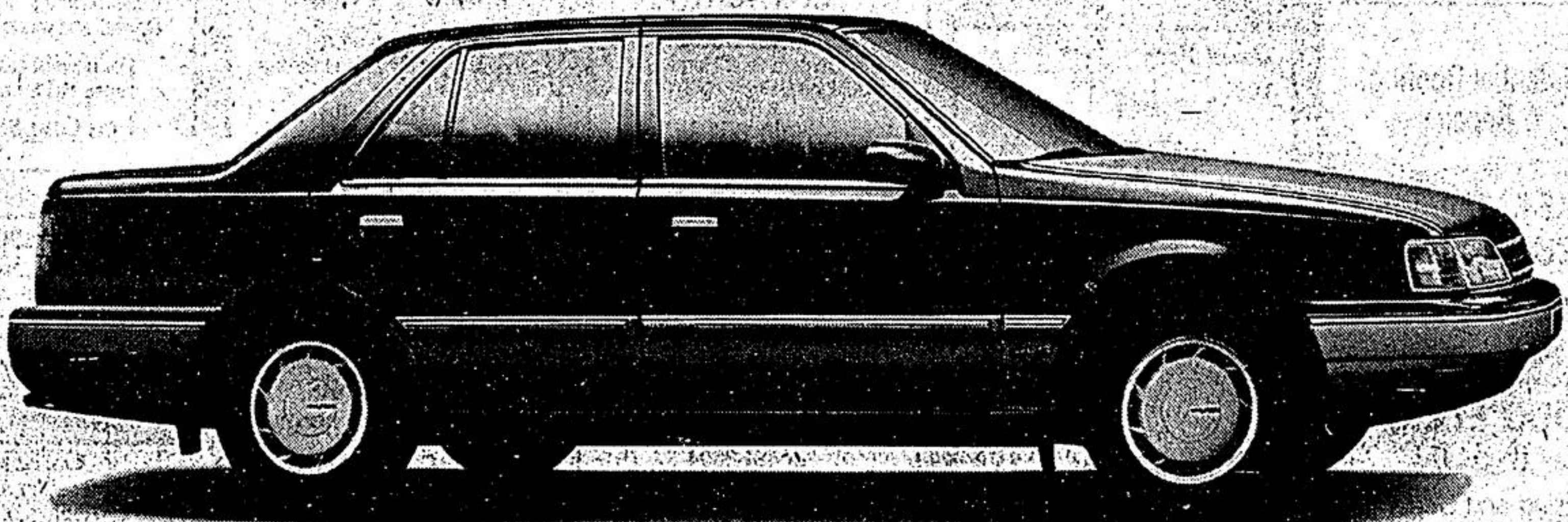
Individual and group instruction.

For more information, call us today!



5293 Highway #7, Suite 203 Markham, Ontario L3P 1B8 Telephone: 294-8757

# THE NEW ORIENT EXPRESS.



You don't just drive the all-new Sonata. You travel in it. And you do so in a style to which you will readily become accustomed.

Comfort starts with 10 cubic feet more interior room than you find in Camry and Accord. So you can stretch your legs and elbows, and you don't have to take off your hat!

Power starts with a bigger standard engine than Camry or Accord or Mazda 626; 2.4 litres of overhead cam, multi-point fuel injected,

4-cylinder energy delivers exhilarating power.

Creature comforts are plentiful: AM/FM cassette stereo with 4 speakers, tilt steering wheel and power steering, remote power trunk and fuel door release, and remote dual outside mirrors are all standard luxuries.

And at \$12,990\* (which is thousands less than Camry, Accord or 626) you have plenty of money left over to enjoy your travels. Your Hyundai dealer welcomes you aboard.

# Sonata

Settle for more.

**HYUNDAI**  
Cars that make sense.

\*Manufacturers suggested retail price for 1989 Sonata GL. Taxes, license, freight and P.D.I. not included. See your individual dealer for freight and P.D.I. charges.

Hyundai of Toronto  
955 Eglinton Avenue E  
Toronto 425-4488

Downtown Hyundai  
951 Queen Street East  
Toronto 461-2323

Auto Trend  
11262 Yonge Street  
Richmond Hill  
884-8841

Agincourt Hyundai  
4910 Sheppard Ave. E.  
Scarborough 291-2929

Limbert's Motors Ltd.  
1195 Eagle Street  
Newmarket 895-3222

Auto Seven  
5829 Hwy. 7  
Markham 471-0099

Rotom Hyundai  
1957 Eglinton Avenue East  
Scarborough 752-4720

Jack Frame Hyundai  
285 Old Kingston Road  
Scarborough 283-7669

Venmar Hyundai  
335 Rexdale Blvd  
Rexdale 748-2555