

Real Estate

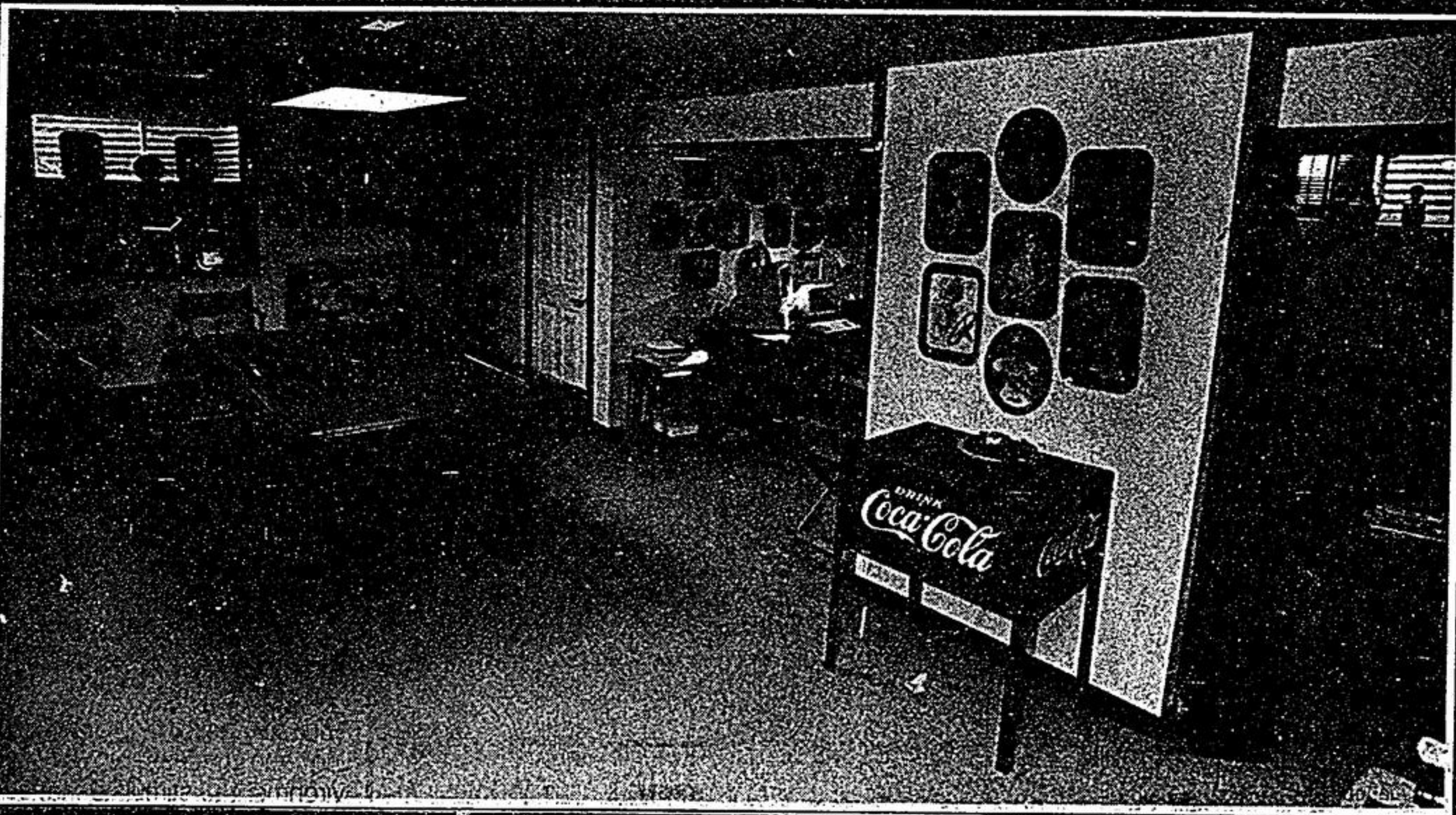
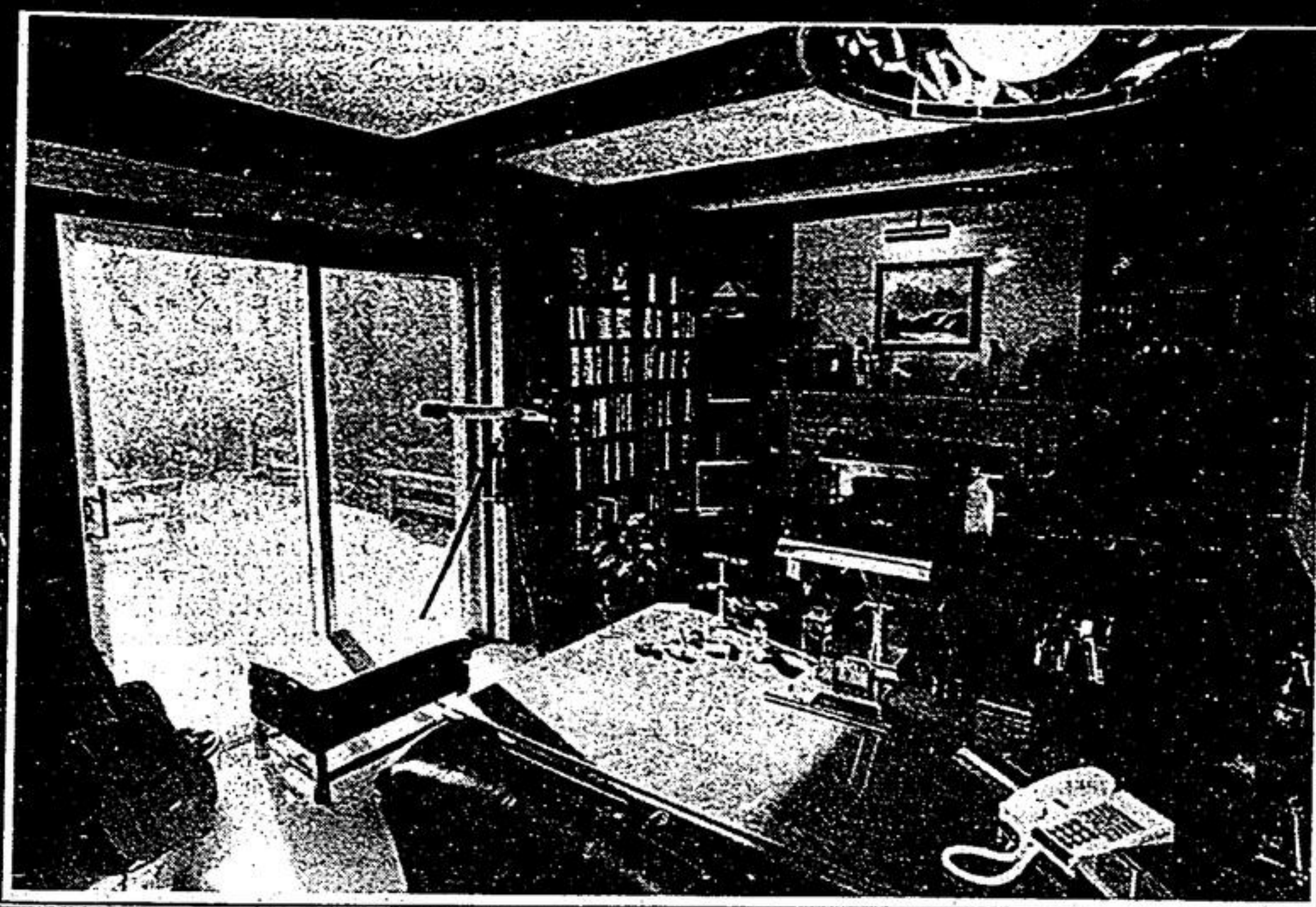
ScotiaMcLeod

Free Booklet
"10 Ways You Could Be Cheating Yourself At RRSP Time"

MARKHAM OFFICE
477-2022

Trusted investment advice since 1921

Home of the week



474-1212 | 640-1200

THE GOOD WILL OF THOSE WE SERVE IS THE FOUNDATION OF OUR SUCCESS

STOUFFVILLE
North-West corner
Hwy 48 & 47 640-1200
Mt. Albert 473-1100
MARKHAM-UNIONVILLE
3882 Hwy 7 East,
Just east of Warden
Unionville 474-1212
PRIVATELY OWNED REAL ESTATE COMPANY

THINKING OF MAKING A CHANGE



We'll help you reach your full potential with a career in real estate. Call **Karen Gerrard, 477-2533**

Century 21
ARMOUR REAL ESTATE INC.
Member Broker



JOHN HURLBUT



SHIRLEY HURLBUT



LOVELY BUNGALOW

In town location, mature landscaping, very appealing, 3+1 bedroom. For viewing contact John Hurlbut or Shirley Hurlbut at 640-1200, 473-1100, or Res: 852-5242.



START THE NEW YEAR RIGHT! 1922 sq. ft. brick and fieldstone split, workshop, inground pool, country lot (0.66 acre) - good commuter, a must see! Call Shirley Hurlbut or John Hurlbut at 640-1200, 473-1100 or Res: 852-5242.



HIGH ON A HILL

Sits this beautiful brick and board and batten home on a 5.82 acres, lovely view, potential estate home, new interior now in the drywall stages - put your imagination to work and invest in its future potential. Toronto calling exchange, 10 min to 404, 4 bedroom, cent. vac, for further information call Shirley Hurlbut or John Hurlbut at 640-1200, 473-1100 or Res: 852-5242.



SANDRA JOHNSTON



SHERRY HAYES



VICTORIAN REPRODUCTION 3/4 ACRE REDUCED!

Full finished basement includes bedroom, w/o, bar or kitchen area, rec. room with fireplace and 1-4 pc. bath. Main floor features separate living and dining rooms, family room, large kitchen with ceramics, Cherrywood hardwood floors, 7' bevelled glass French doors. 2nd floor has 4 bedrooms, master bedroom has fireplace, walk-in closet and large ensuite. Reduced to \$429,900. Home still under construction. Call Sandra Johnston or Sherry Hayes at 640-1200.



NOW ONLY \$337,900. APPROX. 2429 SQ. FT. ON 0.4 OF AN ACRE!

Located in the town of Stouffville
4 bdms., master has ensuite and w/closet
Main floor den
Main floor family room with fireplace
Ceramics throughout kitchen, hall and all baths
Upgrades galore include central air, central vacuum, open circular staircase from 2nd floor to basement plus lots more! Call Sandra Johnston or Sherry Hayes at 640-1200.



HIGHLY RECOMMENDED AND AT ONLY \$269,900

3 + 1 bedroom backsplite with a double car garage, well landscaped. The living room is set apart for formal entertaining. Separate dining room, family sized eat-in kitchen with w/o to yard, finished basement plus an in-law apt. To view this well kept home call Sandra Johnston or Sherry Hayes at 640-1200.



BRIAN ELSON

IF A COUNTRY SETTING IS WHAT YOU'RE SEEKING

This property has lots of space on its premium 3/4 acre lot. The home is a spacious 3 bedroom, with w/o from dining room and family room. Priced to sell at \$279,900. Give me a call today. Brian Elson at 640-1200.



EXQUISITE COUNTRY ESTATE

49 Scenic acres, multi-level spacious home overlooking large pond, semi-circled with trees. Original barn and outbuildings. Established and proposed estate subdivisions in immediate area. Call for a private showing TO-DAY! Elaine Kalmbach / at 640-1200.



ELAINE KALMBACH



KIM REESOR

'RENOVATORS'

2 bdrm. cottage located on quiet street, deeded beach rights, great potential. Listed \$115,000. Call Kim Reesor at 640-1200.

BRICK BUNGALOW - \$277,000

One of a kind, open concept, custom kitchen with w/o, main floor family room, fireplace, 3 bdms., full basement, finished 2 pc., sauna, shower, situated on landscaped lot in sought after area of Stouffville. Call to see with Kim Reesor at 640-1200.



KATHY CLULOW STOUFFVILLE GERRY MICHAEL UXBRIDGE

The best kept secret in the real estate business

That's the full commission program at Family Trust. Surprised? It's true. Family Trust's proprietary FLEXCOM system provides eight distinct payment options, including 100% commission. At Family Trust, you can choose the payment plan best suited to your current needs and circumstances without upsetting your sales career by moving from one company to another. Stouffville - 640-2082 Uxbridge - 852-3443 294-1372 ext. 243 Canada's largest privately owned real estate company