

Markham Heating
 & AIR CONDITIONING SYSTEMS
 191 Wellington St. E. Unit 7
 Markham
 471-1748
 Craftsmanship
A Fine Tradition

Tribune
Focus

Community
 Sports
 Leisure
 Entertainment

Serving Whitchurch-Stouffville, Uxbridge and area

FOR A
 FREE
 PROPERTY
 EVALUATION
 CALL VAN BATT
 640-4560
 RE/MAX IMPERIAL
 REALTY LTD.

A Metroland Community Newspaper

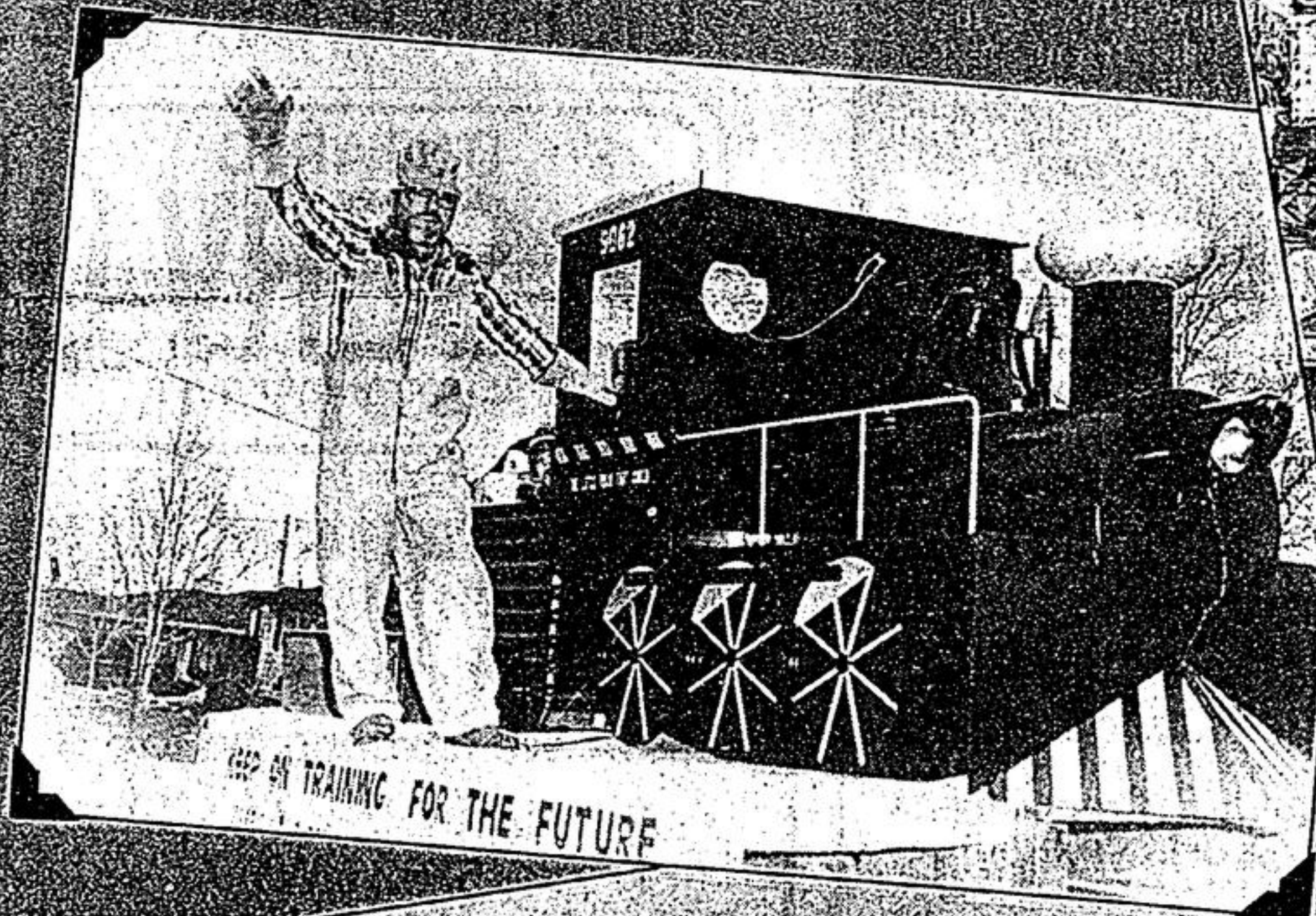
Wednesday, December 7, 1988

Christmas is coming!

Santa rolls into Stouffville



The star of the show, Santa Claus, lit up the faces of children along the parade route at the Stouffville Santa Claus parade. At right, students at St. Mark's school became the Marlian Tabernacle Choir for the parade. Their float won the award for most original entry. Christmas in the future was the theme of this year's parade.



Miss Markham Fair Queen (above) Laina Oad waves to the crowd at the parade. At top, Ralph Perry conducted this train entered by Giltech Canada of Uxbridge.

Mount Albert Containers entered this gingerbread house (above) with the gingerbread lady at the door. At top, the Stouffville Newcomers Club created the S.S. Christmas Star Ship. Below from left to right, John Williams of Altona entered the parade as a clown. Gil Kelly, 27, of Stouffville is greeted by another clown. Below right, Kathryn Spafford and Todd James, both 4, are seen with a fluffy white rabbit.

