

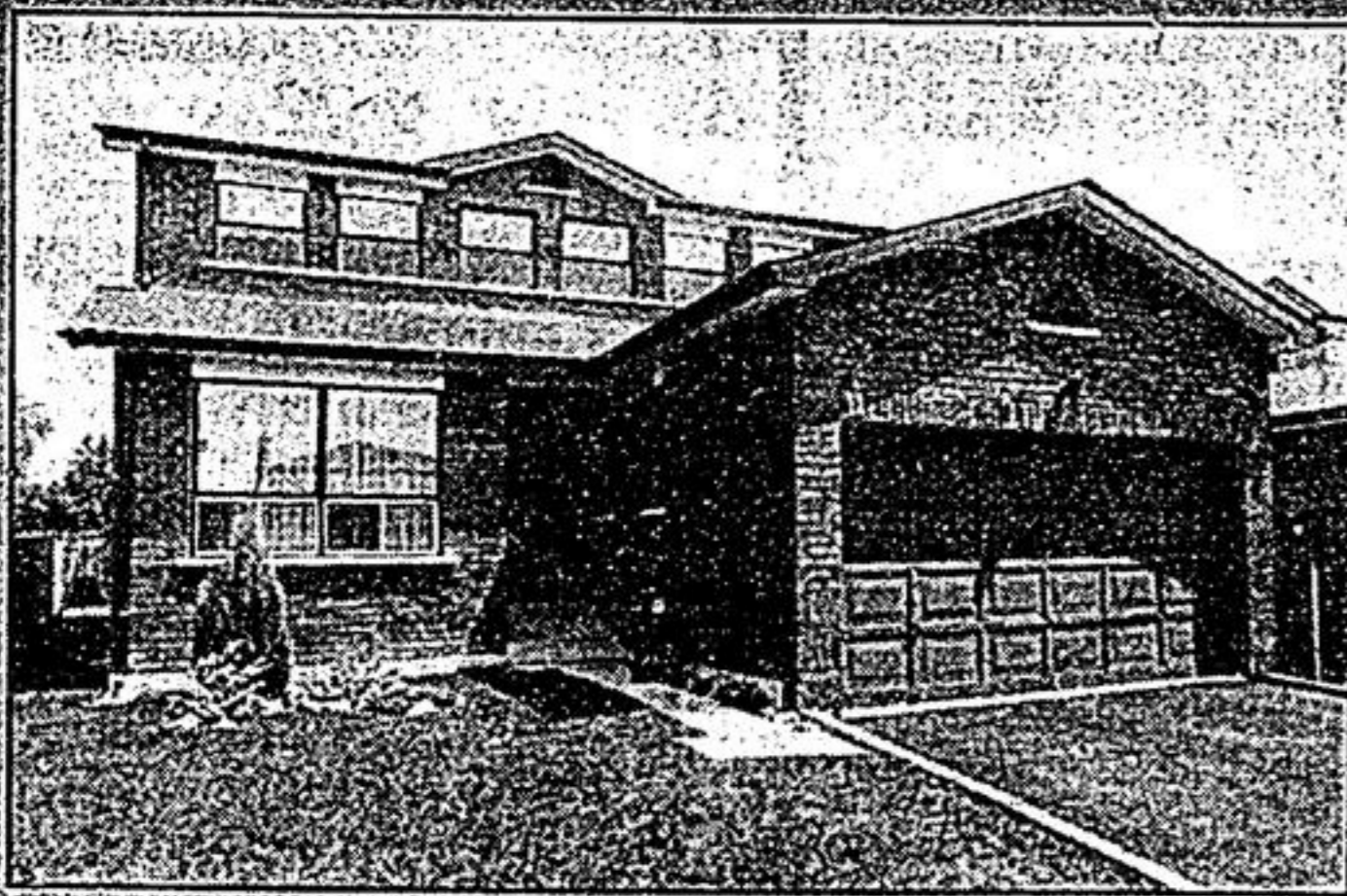
# Real Estate

Economist & Sun / The Tribune



## Home of the week

This home is located in the heart of Markham within walking distance of Main Street and shopping at 11 Byer Drive. The house is listed with Safeguard Real Estate Ltd. for \$290,999. It features four bedrooms, with an ensuite bath in the master bedroom. On the main floor there's a family room with fireplace and an eat-in kitchen with a walkout to a deck. An added feature is central air conditioning. For more information about this house contact Adriana Guirguis or Jim S. Khawil at 471-4900.



JOANNE McNEILL



BRIAN MEHARG

## ARE YOU READY TO EARN WHAT YOU'RE WORTH?

We're looking for people who are ambitious enough to go for the gold... and get it. You'll be backed by the resources of the largest real estate organization in the world, including an international V.I.P. referral system and on-going training through our exclusive Career Trak system.

Find out what over 7,200 CENTURY 21 neighbourhood professionals across Canada have going for them.

CALL TODAY:

JOANNE McNEILL UXBIDGE 852-6106 640-2600  
BRIAN MEHARG STOUFFVILLE 640-3131 473-1979



GERRY MEHARG LTD. MEMBER BROKER



STOUFFVILLE  
OPEN HOUSE SUNDAY 2-5  
9 Sleepy Hollow Lane

Hwy. 47 South of Bloomington. 4250 sq. ft. executive home, 3 car garage, 4 large bedrooms, backs onto golf course. Estate lot. \$484,000.

**493-1078**



SADIE MORANIS  
realtor

- Up to 80% Commission
- No Desk Fees
- Double End Bonus
- Trip Bonus
- Car Telephone Allowance
- Paid Advertising

FOR CONFIDENTIAL  
INTERVIEW CALL  
DARCY WARNER  
471-8800



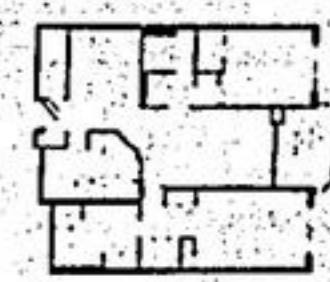
Re/Max Markville Realty Ltd. 471-6600



DIANE BLACKBURN



SUSAN HIGGINS



### FANTASTIC LOCATION

Entertaining living & dining rm. Private sunroom, full ensuite off master. 2nd bdrm. & bath: A view of the Pond.

Diane Blackburn & Susan Higgins, Bus. 471-6600/24 Hr. Pager  
Re/Max Markville Realty Ltd. Rtr. (\*Sales Representative) (\*\*Associate Broker)



JUST LISTED! \$249,900

Brinkley & Steeles - All you have to do is move into this 2,000 ft. 2 bdrm. home, which features: 3 baths, country kitchen family rm. combination, central air, elec. garage door openers, upgraded carpeting, neutral decor. This home sits on an extra large premium lot. Shows like a model home. For further details call Nancy Lawson, 294-2990.



NEAR MARKHAM AND SHEPPARD  
Drastically reduced for quick sale. 6 rooms, 3 bdrms., finished bsmt., 1-4 pc., 1-2 pc., fenced lot, deck and many extras. Call Joanne Pagliocca (Sales Rep.), 889-2200 or Home, 471-0501.

Homelife Bayview Realty Ltd.