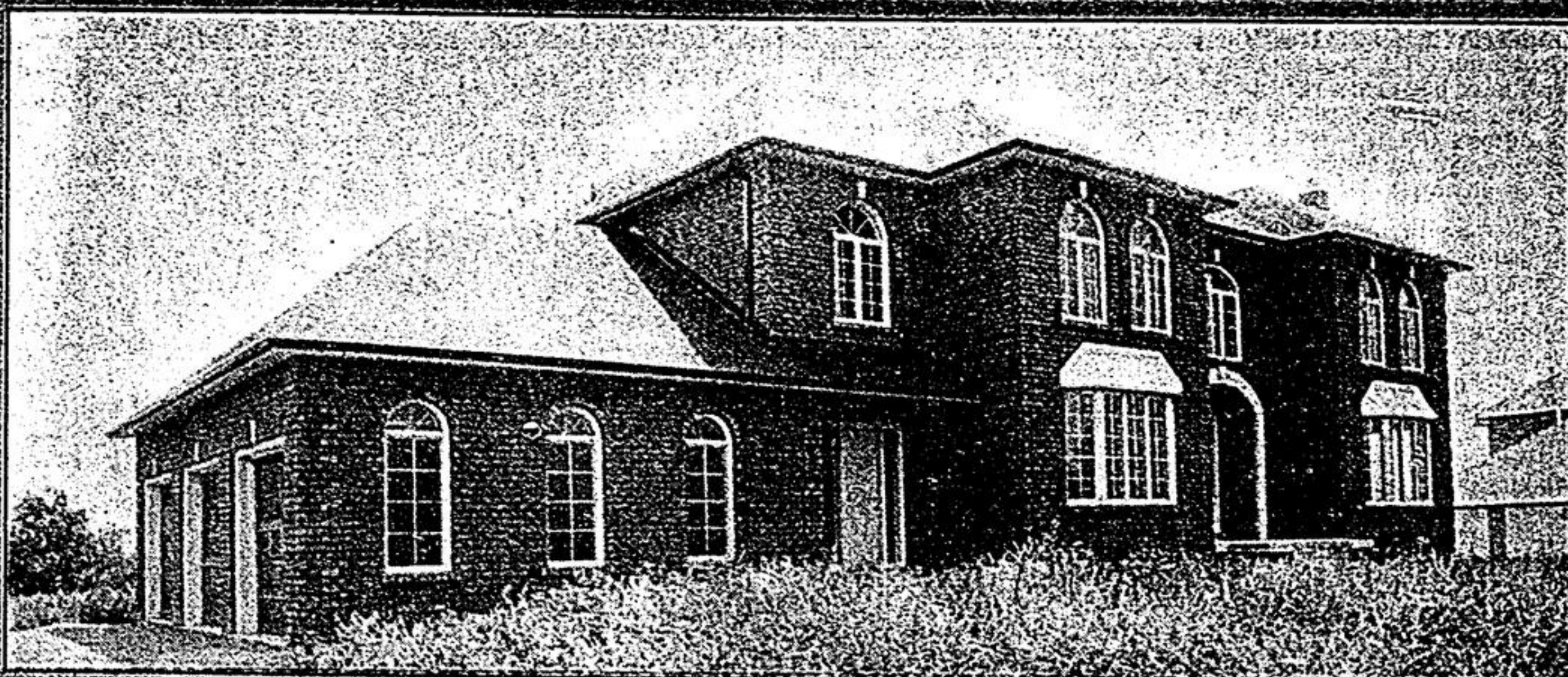


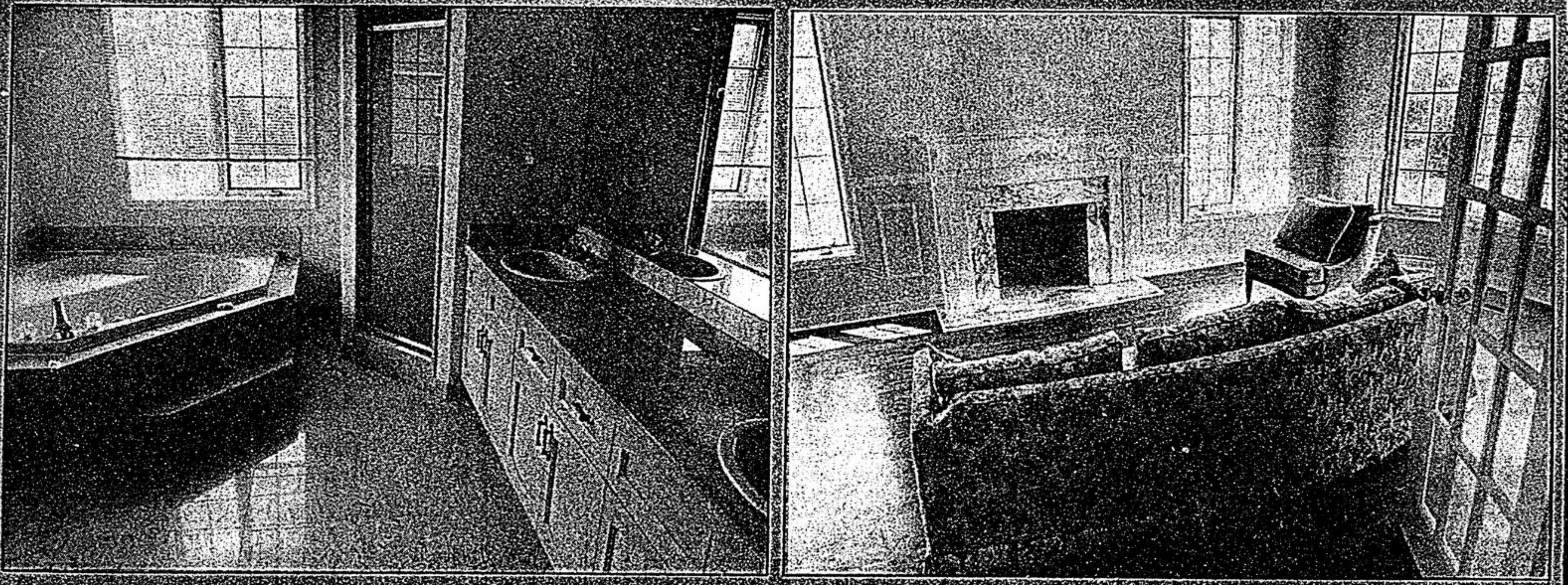
Real Estate

Economist & Sun / The Tribune



Home of the Week

Home of the Week located at 7550 Yonge St. near Warden Ave. and Major Mackenzie Dr. is listed for \$1.2 million. The four bedroom two storey house features a formal dining room, gourmet kitchen with tennair barbecue, traditional living room with marble fireplace and a marble floor. The house is listed with Family Trust and the agents Roden, Antrobus. She can be reached at 294-1572.



WATERFRONT ACREAGE LAKE SIMCOE

460 ft. sandy shoreline. Approx. 35 ac. wooded. South of Barrie. 4 cottages with potential. \$1,900,000. Bowes & Cocks Limited Real. Tor. 705-721-8558 Don or Sandy.

BOWES & COCKS
LIMITED REALTOR

OPEN HOUSE

Wed. Aug. 3 7-9
Sun. Aug. 7 2-4 P.M.

56 Burwell Cres.

Lovely 3 bedroom home, pool size lot, finished basement, 1 1/2 baths for only \$229,900.

471-1056

STOUFFVILLE OPEN HOUSE SUNDAY 2-5 9 Sleepy Hollow Lane

Hwy. 47 South of Bloomington. 4250 sq. ft. executive home, 3 car garage, 4 large bedrooms, backs onto golf course. Estate lot. \$484,000.

493-1078

5 ACRE BUILDING LOT
VIVIAN FOREST
FAULKNER AVENUE
McCOWAN ROAD, NORTH
OF AURORA SIDEROAD
\$275,000

call 294-4832

PRIVATE SALE LICENSED RESTAURANT

And 6 unit motel on almost 1 acre. Located just 7 miles north of corner Hwy. 48 & 7.

Best Offer

Call 640-2900



474-1212 640-1200

"THE GOOD WILL OF THOSE WE SERVE IS THE FOUNDATION OF OUR SUCCESS"

STOUFFVILLE
North-West corner
Hwy 48 & 47 640-1200
Mt. Albert 473-1100

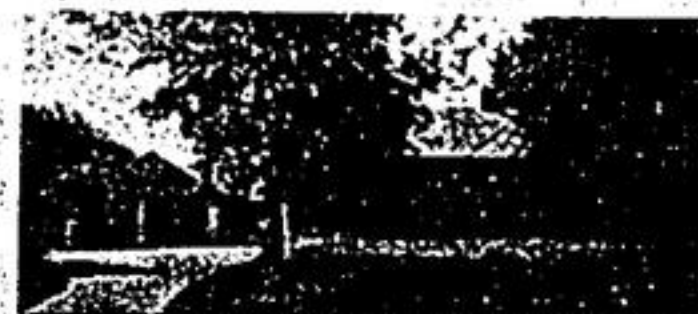
MARKHAM-UNIONVILLE
3882 Hwy 7 East,
Just east of Warden
Unionville 474-1212

PRIVATELY OWNED REAL ESTATE COMPANY



Sandra Johnston Elaine Kalmbach

HORSE LOVERS . . . NOW IS THE TIME!
To buy yourself almost 5 beautiful acres near Cherry St. Ideal for horses - fenced paddocks and entire property - 3 stall barn - 4+2 bedroom brick bungalow. Inground pool - 3 car garage. HURRY! Call Elaine Kalmbach or Sandra Johnston at 640-1200.



COUNTRY PROPERTY - STOUFFVILLE ROAD FRONTAGE
- 1/2 acre with mature trees
- Backs onto open fields
- Brick veneer bungalow renovated 6 years ago
- Custom ceramics
- Skylight
- Euro kitchen
- Heat pump
- Elmira woodstove
- ACT FAST! Call Elaine Kalmbach or Sandra Johnston at 640-1200.



GREAT STARTER HOME
\$149,000 - 2 bedroom with walkout, woodstove, on almost 1 acre country property near Mt. Albert. Call Caroline Holroyd at 640-1200 or Res: 473-1317.

175 ACRES NEAR MT. ALBERT
Beautiful panoramic setting, rolling high & dry land. Includes 3 bedroom farmhouse. Asking \$3,400 per acre. Call Caroline Holroyd at 640-1200 or Res: 473-1317.



SHERRY HAYES

\$159,900 - * Finished basement
* Eat-in kitchen with walkout
* Single car garage
* Toronto calling exchange
Call Sherry Hayes at 640-1200.



OVER 50 ACRES -
* Toronto calling exchange
* Possible VTB
* Includes buildings
* Act fast, only \$580,000
Call Sherry Hayes at 640-1200.



LOOKING FOR A HOME ON 1/4 OF AN ACRE?
* Main floor laundry facilities
* Eat-in kitchen with walkout
* Main floor family room with a brick fireplace
* Master bedroom features an ensuite with a large step-up tub and a show stall
* Backyard has southern exposure
* Oversized double car garage and paved driveway
* ON TOWN WATER.
Call Sherry Hayes at 640-1200.

BUILDING LOT
50' x 200' - Stouffville area. Call Brian Elson at 640-1200.

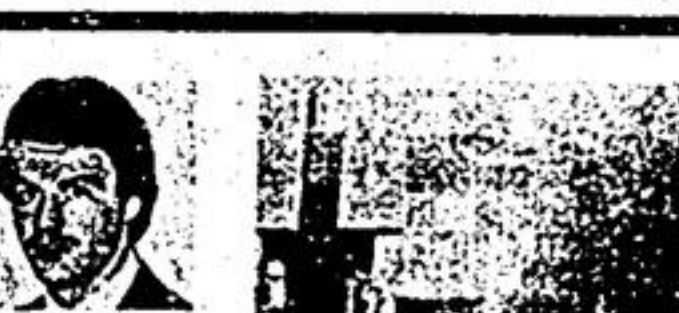


2436 SQ. FT. GREENPARK

* 75' x 105' lot
* Ceramics
* Main floor laundry
* Floor to ceiling fireplace in family room
* 4 bedrooms - master has ensuite and walk-in closet
* Central air is just one of the many upgrades.
Listed at only \$299,900. Call Sherry Hayes at 650-1200 to view this lovely home.



LOOKING FOR A WORKSHOP?
* 32' x 18' garage/workshop insulated with approx. 10' door
* Main floor laundry room
* Eat-in kitchen
* 60' x 100' lot - nicely landscaped.
To view this home, call Sherry Hayes at 640-1200.



BRIAN ELSON
\$177,900
Beautiful 4 bed...-house in Unionville. Ready to move. Call Brian Elson at 640-1200.



4 BEDROOM BRICK BUNGALOW
This newly decorated home looks like new. Features a large eat-in kitchen with walkout to deck. A very spacious home with an open concept. Call Brian Elson at 640-1200.



EARL ELSON ALAN ELSON

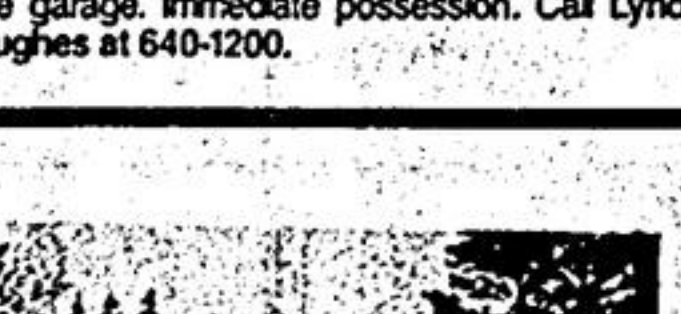


CLAREMONT AREA
2 acre lovely treed lot, approx. 1350 sq. ft. bungalow, large double garage plus workshop 25' x 40'. Come and see this one today. Call Earl Elson at 640-1200.

10 ACRES PARTIALLY TREED
Building permits available, still time to build this year or invest in the future. Call Alan Elson at 640-1200.



IN-LAW APT:
Spacious bungalow on quiet court features large kitchen/family room combination. Walkout to deck, rec. room with fireplace and complete sep. 2 bedroom in-law apt. Lovely brick home with double garage. Immediate possession. Call Lynda Hughes at 640-1200.



IMMEDIATE POSSESSION
Need a home that's immediately available? This could be the one for you. Located on a well treed 1/2 acre lot this home can be bought for \$199,900. Call Brian Elson at 640-1200.



Home Life/Town Living Realty Limited
Realtor-Member

640-2225 473-2440



STREAM AND POND CUSTOM HOME
New 2700 Sq. ft. on 3 1/2 acres in Stouffville. Oak staircase & kitchen cabinets, french doors, formal dining room, sunken living room with fireplace, ensuite with jacuzzi bath, two walkouts to large deck, full basement with R/I fireplace and washroom, triple garage. Quality built throughout. Asking: \$595,000.



LARGE MATURE LOT 3 + 1 BEDROOMS
New custom kitchen with oak flooring, fireplace, w/o to large deck, 2 washrooms, finished basement, plaster const. Tastefully decorated, maintenance free, just move in and put your feet up. Walk to all amenities of Stouffville. Asking: \$239,000.

FOR INFORMATION ON THE ABOVE CALL: Marty Valleeu, 640-2225 or RES: 640-5729

COMMERCIAL LAND
3 Acres of hwy. property close to subdivision Uxbridge area. \$275,000.

CORNER INVESTMENT
745 Feet of Hwy. frontage on #47 south of Uxbridge. Booming area of future investment. \$274,000.

POSSIBLE SUBDIVISION
Beautiful 25 acres for estate subdivision in Uxbridge. \$750,000.

FOR INFORMATION ON ANY OF THE ABOVE, CALL Shirley de Koning, 640-2225 or RES: 705-357-2280.