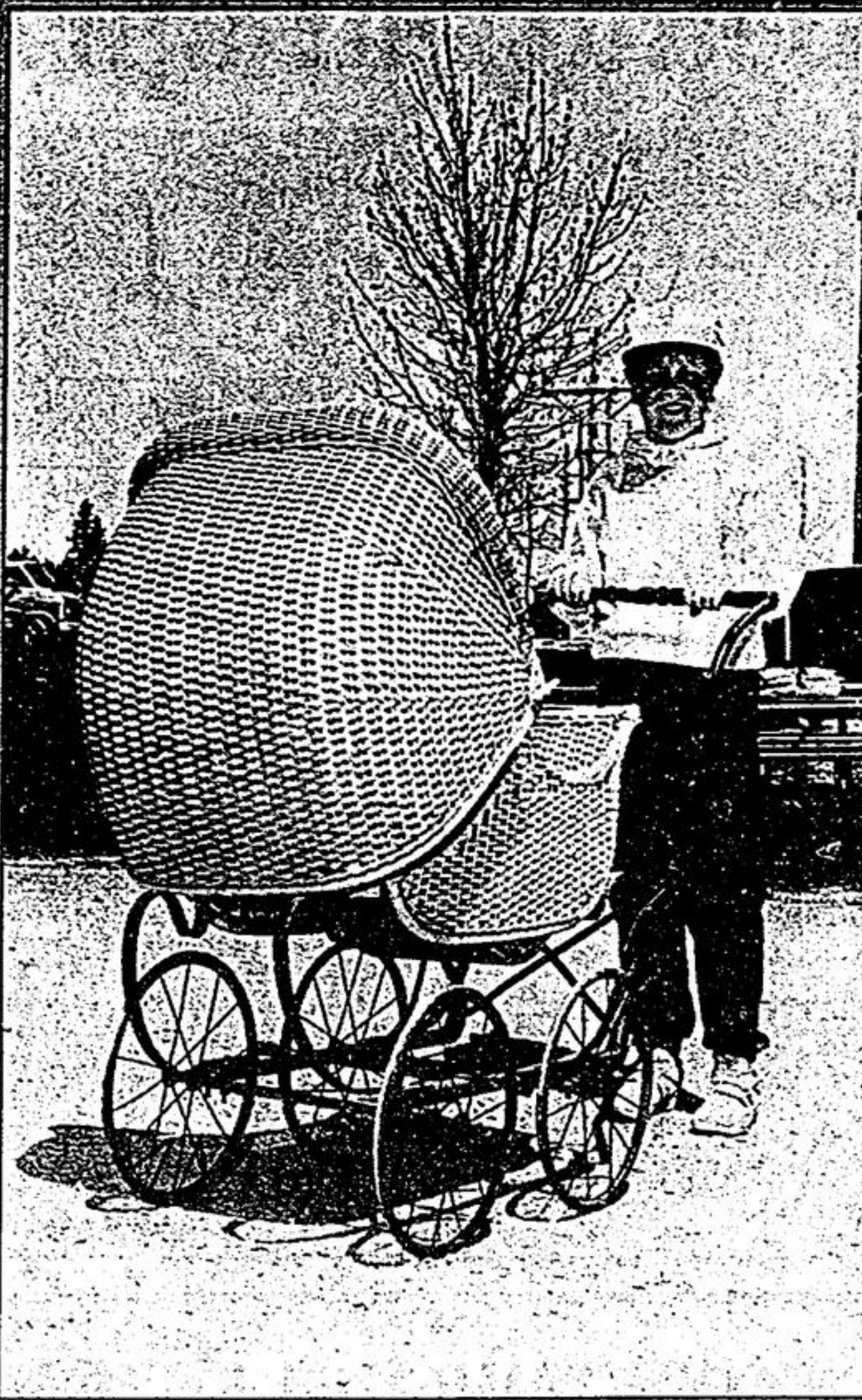


Antique Show draws a crowd



Christ Church Anglican, Stouffville, hosted its annual Antique Show and Sale Friday night and Saturday at Markham Rail grounds. A good crowd attended. While making the rounds, The Tribune's cameraman spotted these smiling subjects — Beth Boy-



man (left), Windlane Drive, Stouffville, with an age-old spinning wheel priced at \$295. Jenny Sense (centre), Maystone Court, Stouffville, with a circa 1900 baby carriage, priced at \$245 and Amy Sled-



(right), also of Maystone Court, with a unique ash sifter valued at \$57.50. — Jim Thomas

Orchard Park pupils 'shadow' Tribune editor

STOUFFVILLE — Recently three students from Orchard Park School, Stouffville, visited The Tribune to observe first-hand a 'day in the life of a weekly newspaper editor'. The pupils were — Kevin Cargill, Derek Kimmerly and Mary-Lynn Thomas.

Following this experience, Editor Jim Thomas received the following letters:

Blue Jay insignia on your keyboard and how did you obtain it? I also would like to obtain one.

Perhaps George Bell once used it to keep track of his batting average.

you to work. I learned alot, especially how to operate the computer. I thank you very much for taking the time to show me the kind of work you do.

The Children's House Day Care Centre, Nursery School

22 Church St. N., Stouffville

"The home away from home for your child"

- Spaces available — Register Now
- New longer hours — 7 a.m.-6 p.m.
- Full day program — Nursery school A.M.-P.M.
- Summer program — Part time available
- Government Subsidy Available
- Ages 18 months to 5 years

640-2905 New supervisor Sharon Kinsman 7 a.m.-6 p.m.

231-5713 New Directors Brian & Sheila Keogh (after hours)

Dear Mr. Thomas: On behalf of our intermediate students and staff, we wish to express our thanks to you for taking time out of your busy schedule to allow three students to 'job shadow' you.

Sincerely, Derek Kimmerly

Dear Dad: I thank you for taking me with

Sincerely, Mary-Lynn Thomas

It helps the students to better understand what your career involves by sharing your experiences and asking questions. All pupils will gain information about different occupations during class presentations.

Thank you for your part in making our Career Awareness Program a success.

Sincerely, Doreen Brown, Counsellor, Orchard Park School.

Dear Mr. Thomas: I really enjoyed my visit to your newspaper. I learned a great deal about your word processor. Thanks for allowing us to write one of your stories and for the tour of your Office. I really enjoyed it.

Sincerely, Kevin Cargill,

Dear Mr. Thomas: Thank you for allowing me to visit The Tribune. Operating the word processor was a lot of fun. I enjoyed writing the story about Club 404. I learned a lot and enjoyed it. I wish I could type as fast as you without looking at the keys or the screen. One additional question: Why do you have the



The future?

The future was now at Whitchurch-Highlands Public School, Wednesday, as Grades 7 and 8 staff teachers and students unveiled their predictions of the space age in years to come. Summing up this theory was the welcome banner at the school's entrance related to the future of the Toronto Maple Leafs and Blue Jays. Optimistic students are Katrina McFadden, (left), and Meagan Austin; both 12 and in Grade 7. For story see Page C-7.

—Chris Garbutt

TOWN OF WHITCHURCH-STOUFFVILLE 1988

Citizen of the Year NOMINATIONS FOR 1988

NOW BEING ACCEPTED UNTIL WED. JUNE 17TH

"Citizen of the Year, 1988"

I WOULD LIKE TO NOMINATE...

Name _____

Address _____

PLEASE ATTACH SUPPORTING REASONS

Mail or drop off your nominations with supporting reasons to: The Tribune, Box 40, Stouffville, L0H 1L0

EARN EXTRA INCOME BECOME A TRIBUNE CARRIER IN STOUFFVILLE

ROUTES ARE AVAILABLE IN YOUR AREA. CALL NOW FOR YOURS!

640-2100

IT PULLS A TILLER, CULTIVATOR, BACKHOE, MID-MOUNT MOWER, FLAIL MOWER, DISC HARROW, POST HOLE DIGGER, LOADER, BOX SCRAPER, PLOW, SNOWBLOWER, REAR BLADE AND ITS OWN WEIGHT.

A compact Kubota tractor pulls a surprising number of hardworking implements. And there are more than a dozen Kubota diesel tractors under 40 horsepower. So you're sure to find exactly the combination you need. Kubota tractors and implements. They're made for each other.

KUBOTA
Nothing like it on earth.

B & W Farm Service
R.R. #5 (705) 357-3760
Sunderland, Ont. (705) 357-3192

B & W Farm Service, Sunderland, Ont. 5 mi. S. of Sunderland