

Real Estate

Economist & Sun / The Tribune

294-2200/640-2100

FirstCall

Are you qualified for real estate sales but not actively involved?
Contact me for a description of the exciting opportunities offered through the FirstCall Referral Associate program.
L.Y. Betty Webber, Manager Family Trust Corporation Markham.
294-1372

PRIVATE SALE

OPEN HOUSE SAT. AND SUN.
1 - 4 P.M.
3 NATALIE CRT.

Semi detached close to new hospital, schools and public transit. 3 bedrooms 2½ baths, family room with fireplace built in dishwasher partially finished basement huge fenced yard with deck \$209,000
294-6065



OPEN HOUSE
SUN. MAY 15, 2-4 p.m.
8 Knights Place
(Bloomington & 9th Line area)



STOUFFVILLE JUST REDUCED
Attractive 4 bedroom plus family room, magnificent treed ½ acre on cul de sac. Newly finished rec room with wet bar and walkout. Flexible possession. \$299,000. Call Mark Draper or Don Rawlings, 764-7111, Homelife Heritage.



JOANNE MCNEILL



BRIAN MEHARG

ARE YOU READY TO EARN WHAT YOU'RE WORTH?

We're looking for people who are ambitious enough to go for the gold... and get it. You'll be backed by the resources of the largest real estate organization in the world, including an international V.I.P. referral system and on-going training through our exclusive Career Trak® system.
Find out what over 5,800 CENTURY 21 neighbourhood professionals across Canada have going for them.

CALL TODAY:

JOANNE MCNEILL 852-6106/640-2600
BRIAN MEHARG 640-3131/473-1979



GERRY MEHARG LTD.
MEMBER BROKER

MIHOREAN & ASSOCIATES LTD.

REAL ESTATE & APPRAISALS

4701 Hwy. #7 Markham

477-1777

OPEN HOUSE MAY 15
2-4 P.M.
309 FINCHAM AVE.

Something for everyone. Markham detached, all brick 4 bedroom, 3 baths main floor, family and laundry room, many upgrades. Approx. 2500 sq. ft. immaculate and priced to sell. Call Alana English 477-1777 Pager 390-3637, res: 640-8525.



Re/Max Markville Realty Ltd. Ritr. 471-6600



Johanna Parker*



Toni Sullivan**

STUNNING UNIONVILLE BUNGALOW \$287,000

2 fireplaces, hardwood floors, professionally landscaped lot, fully fin. basement, walking distance to village boutiques. Original owners. Pride of ownership.

Call Toni Sullivan** Bus: 471-6600

DOWNTOWN UNIONVILLE EXECUTIVE

Over 2500 square feet of upgraded home. Very entertaining and unique. Kidney shaped pool, finished basement with sauna. Not another one like it in all of Unionville.

Call Johanna Parker* Bus: 471-6600/Res: 471-6755.

NEW LISTING DESIRABLE LOCATION \$237,900

All brick home with Central Air, 3 large bedrooms, main floor family rm. & fireplace, finished rec. room, *4 pc. ensuite with skylite*. Huge deck of kitchen has southern exposure. Walk to schools, parks, and soon to the new hospital.

Call Johanna Parker* or Toni Sullivan** Bus: 471-6600.

Re/Max markville realty ltd., ritr. (*Sales Representative) (**Associate Broker)

RE/MAX

Re/max Scugog Realty Ltd. 640-6755

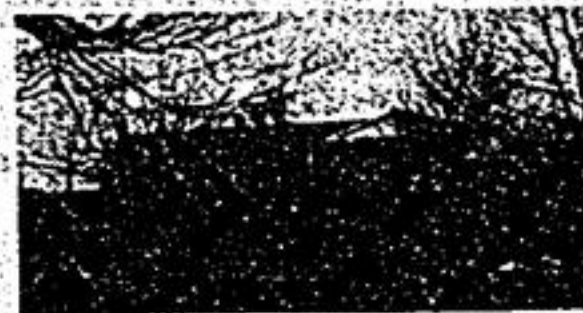


LEE WELDON



UXBRIDGE - \$186,900.

Solidly built raised bungalow in mature area, lovely oak floors, spacious living/dining "L" opening to new solarium with French doors & cathedral ceiling, fireplace. Heated workshop. 2 baths. Vendor has bought.



52 ACRES - PANORAMIC VIEW!
2 minutes from Uxbridge, sprawling rancher on crest of hill, pond, some woods, bank barn. Just listed at \$439,000.

Call Lee Weldon
640-6755, 1-800-263-3288
Re/Max Scugog Realty Ltd.



GILLESPIE REAL ESTATE CLAREMONT CLAREMONT

Location, Location, Location. How often we hear these words. This 1400 sq. ft. bungalow sits on 10 acres, with 380 ft. frontage on Brock Road. Custom built home with plaster walls, extra high basement with finished rec. room, raised bedroom area with 3 good sized bedrooms, floor to ceiling brick fireplace in living room with fan integrated heater. The dining room has a walk-out, and an old fashioned breezeway connects the double drive-thru garage to the house. All this is offered at a very realistic asking price of just \$299,000.



Call Peter Gillespie or Shelagh Mulveney for an appointment to view
649-3336, 640-3336 or 649-3102.

Country Lane

985-7351

Hwy. 7A & High 54, Port Perry, Ontario
P.O. Box 1970 L0B 1R0



TASTEFULLY DECORATED THROUGHOUT

3 bedroom brick home on 1½ acre lot. Large kitchen with oak cabinetry, formal dining room, master ensuite has Roman tub and skylight; a pleasure to show. Listed at \$228,900. 10 minutes from Port Perry.



LARGE 4 BEDROOM

Brick and aluminum Port Perry home backs onto bush and creek. Separate, formal dining room; curved oak staircase, main floor family and laundry room, large master bedroom has 4 pc. ensuite, double garage. Listed at \$219,000.



CENTURY HOME

Reinstated to complement its heritage. Original trim has been restored to its natural finish, new wiring, plumbing, heating & insulation, a seldom found property in the downtown core with C-6 zoning. Listed at \$269,900. Call for details.



BEST OF BOTH WORLDS

Country retreat Century brick home. 4 bedrooms, tastefully decorated throughout, 73 acres nestled quietly near Woodville, large, new workshop 60' x 40'; excellent view. Don't miss this opportunity at \$283,000.



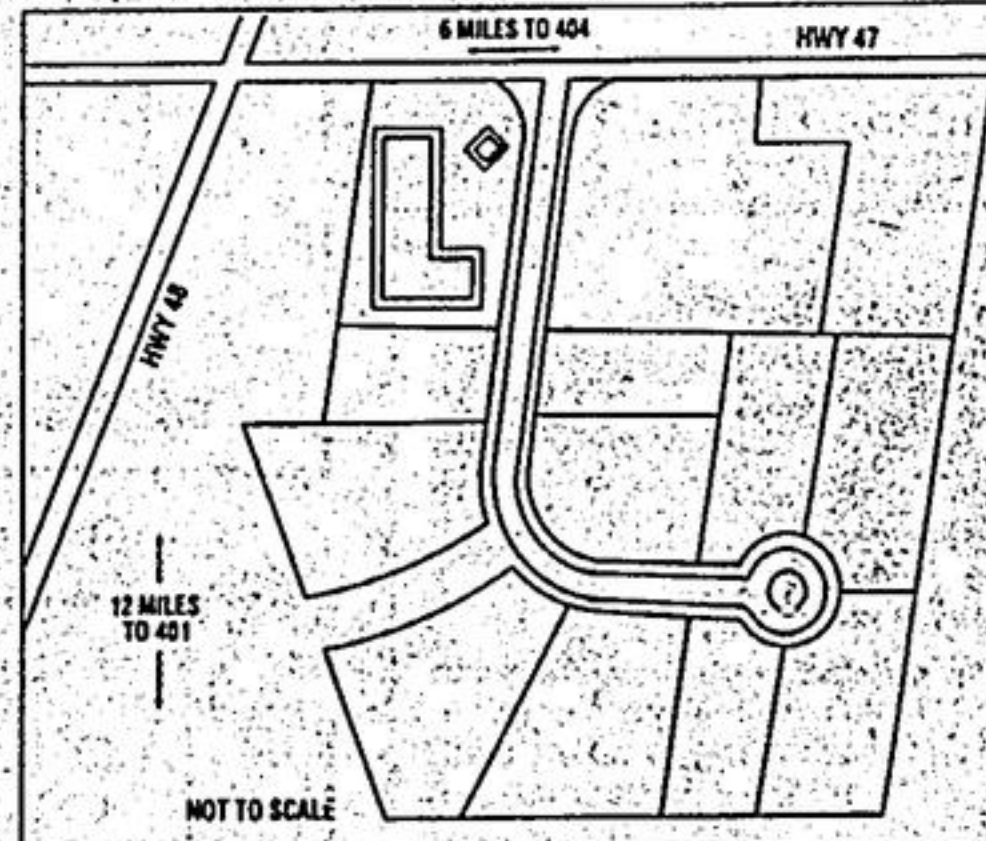
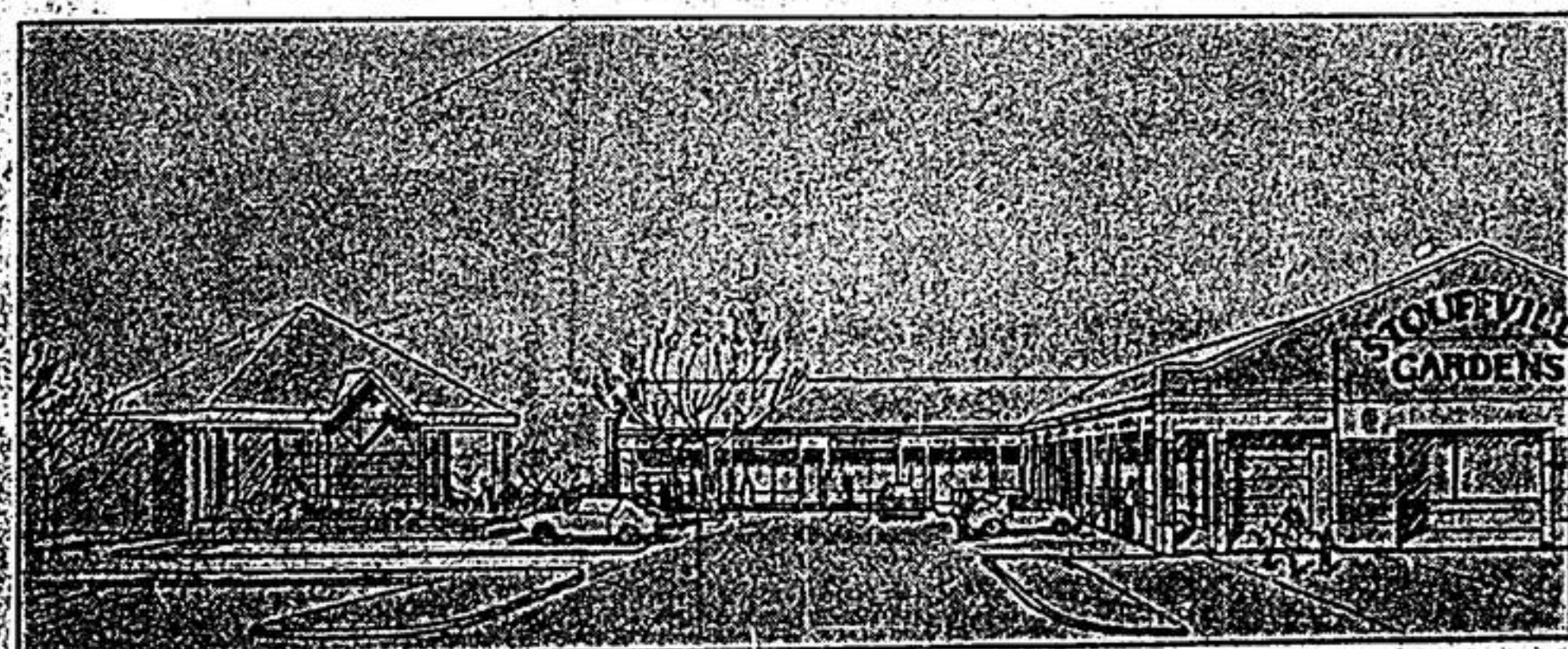
EQUESTRIANS!

30 ACRE HORSE RANCH. Listed at \$435,000. 48 x 30 coloured steel barn with horse stalls and storage area, beautiful brick home with 2 plus 2 bedrooms, dining room, main floor family and laundry room, 3 baths, large recreation room with floor to ceiling fieldstone fireplace, walkout to patio, 2 car attached garage, paved drive, highway frontage. This property is immaculate, has an excellent setting and shows very well. 16 miles North of Oshawa - Toll Free 1-800-263-3764.

20 ACRE BUILDING SITE. High & dry - permits available - 15 minutes northwest of Port Perry. Listed at \$89,900.

Please Call TOLL FREE 1-800-263-3764

ROBIN PARISH 705-439-2173
KEITH PUCKRIN Res. 985-2489
RALPH FAIRMAN Res. 985-2160
F.R.L. C.R.A. Res. 986-4335
WINDA WALSH Res. 986-5250
YVONNE BURNETT Res. 985-9395
GAIL SCALA Res. 985-9395



*Office Condominiums

*Industrial-Commercial Condominiums

• From \$70.00 a sq. ft.

* Commercial - Retail Complex

• From \$12.00 per sq. ft.

* Lot For Sale \$249,000/Acre

*Units from 700 sq. ft.

*Units For Sale or Lease

*Prominent Location on Main Entrance to the Village of Stouffville.

Wide Range of Uses, Sizes, Price Range — IDEAL INVESTMENT

stouffville gardens

W.J. Warren
and Co. Ltd. Realtor

477-8188