

Calendar of Events

The Tribune's Community Focus publishes a weekly Calendar of Events listing upcoming activities in the area. Individuals or groups wishing to use this free service should call 640-2100 or 649-2292 no later than the Friday preceding publication.

April 28

Music Mania '88 opens Thursday, April 28 and continues through Saturday, April 30 at 8 p.m., in the auditorium of Stouffville Dist. Secondary School. Tickets available at Card's Hardware and Stouffville Printing.

A Foot Clinic will be held at the Silver Jubilee Club, Thursday, April 28 from 8:30 to 11:30 a.m. Blood-Pressure Testing is also available. For additional information and transportation call Jean at 640-6554.

The Whitchurch-Stouffville Newcomers' Club will meet at the Legion Hall Thursday, April 28 at 7:30 p.m. A pot-luck dinner will be enjoyed. Officers for 1988 will be elected. For additional information call Jo York at 640-4776.

A benefit performance of 'The Owl and the Pussycat' will be held Thursday, April 28 at The Deer Park Inn, Stouffville, at 8 p.m. Proceeds will subsidize the purchase of wheelchairs for occupational therapy at York County Hospital, Newmarket. Admission is \$12. For reservations call 853-2210.

The annual meeting of the Canadian Mental Health Association, (York Region Branch), will be held Thursday, April 28 at 5:30 p.m., in the Newmarket Public Library, 438 Park Street, Newmarket.

April 29

The Markham-Stouffville Hockey Oldtimers will hold their annual reunion, dinner and dance, Friday, April 29 at 8 p.m., in the Whitchurch-Stouffville Recreation Complex, Ninth Line North.

The Town and Country Home Show opens Friday, April 29 and continues through Sunday, May 1 at Markham Fairgrounds, McCowan Road and 18th Avenue. Hours April 29 and 30 are 10 a.m. to 10 p.m., May 1 from 10 a.m. to 6 p.m.

The Board of Management of the Markham Theatre for the Performing Arts is holding a gala Spring Ball, Friday, April 29 at the Bayview Golf and Country Club. For tickets, (\$125 per person), call Frank Anderson, (964-1700), or Brenda Houston, (479-0204).

The Take A Break organization, (TAB), will meet Friday, April 29 from 9:30 to 11 a.m., in Stouffville United Church, Church Street North. For additional information call Brenda, (640-4006) or Sydna, (640-4189).

Senior bridge players will meet at the Silver Jubilee Club, Stouffville, at 1 p.m., Friday, April 29. In the evening, a euchre party is planned at 7:30 p.m.

April 30

An Artisan's Sale will be held at Parkview Village, 70 Ninth Line South, Stouffville, Saturday, April 30 beginning at 10 a.m., with a quilt auction at eleven. Box lunches will be available in the dining room at noon for \$5.50.

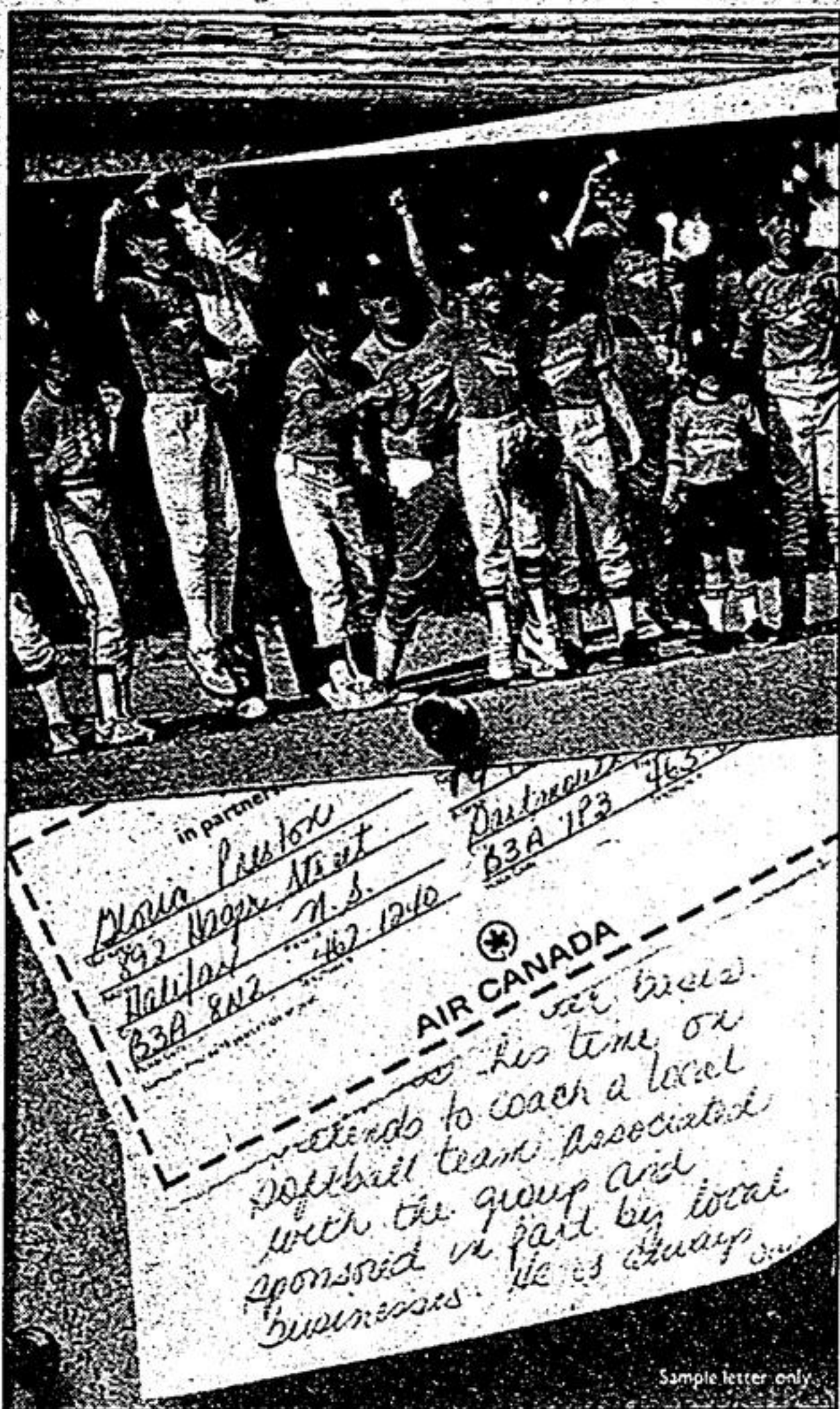
The Whitchurch-Stouffville Little League Theatre is holding registrations for spring 'Creating A Clown' workshops, Saturday, April 30 in the Public Library. The fee is \$10 for members; \$15 for non-members. For additional information call Steve Payne, (642-0026).

The Scout-Cub Paper Drive is Saturday, April 30 beginning at 9 a.m. Bundles should be tied and left at a convenient pick-up point. Seniors requiring assistance are asked to call Gladys Clarkson, (640-1941).

May 2

The Seniors' Video Club will meet at 1:30 p.m., Monday, May 2 in the Silver Jubilee Club. 'The Ballad of the Irish Horse' will be shown. Persons requiring transportation are asked to call Jean at 640-6554.

WE'RE SEARCHING FOR A HEART OF GOLD



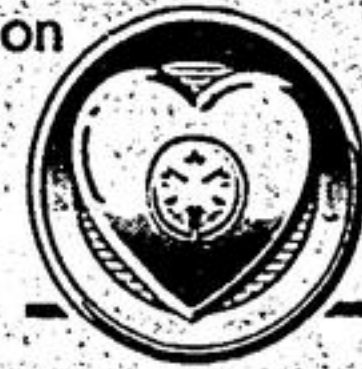
Selflessness. Willingness. Understanding. Qualities you may see in someone you know. Someone who goes out of his or her way to make your community a better place to live.

Air Canada, in partnership with your community newspaper, would like to salute these individuals who bring so much to your community. That's why we created Air Canada's "Heart of Gold" Award.

Now's the time to speak out on behalf of these individuals. Make your nomination for

Air Canada's "Heart of Gold" Award today. It's time we all said thanks.

Complete the form below and include a note, or letter, giving the special reasons why you feel the person you're nominating makes your community a better place to live. Mail it to this newspaper care of Air Canada's "Heart of Gold" Award.



Air Canada's "Heart of Gold" Award in partnership with your community newspaper

My nominee for Air Canada's "Heart of Gold" Award is:

Your name:	Nominee's name:
Address:	Address:
City:	City:
Province:	Province:
Postal Code:	Postal Code:
Telephone #:	Telephone #:

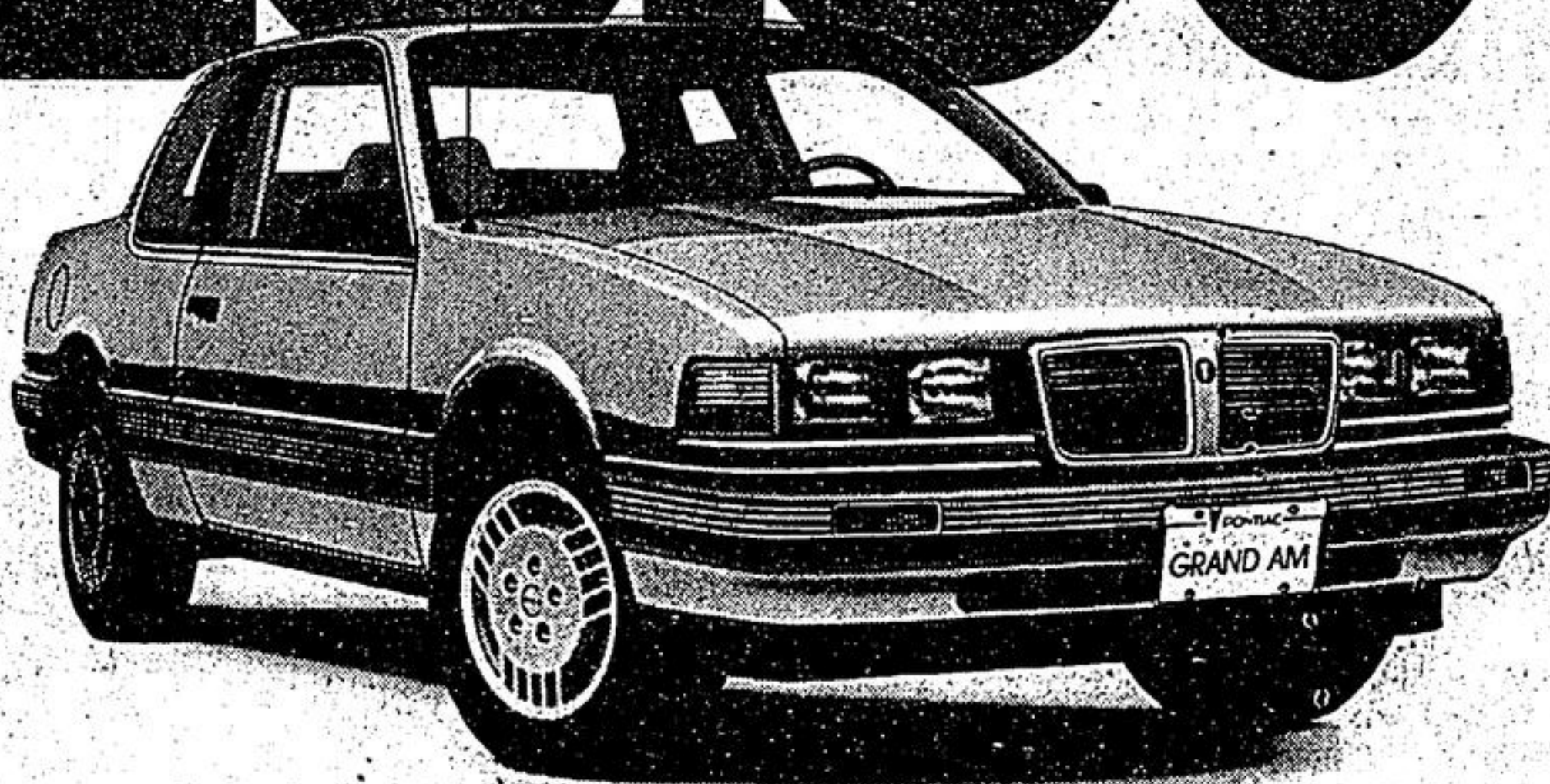
Nominee must be 19 years of age or over.

AIR CANADA

Right Now You Can Get It All For..

UNDER \$13,500*

BEAT THE ONTARIO SALES TAX INCREASE! BUY AND TAKE DELIVERY BEFORE MAY 22 88.



NEW 1988 PONTIAC GRAND AM 2-DOOR COUPE

Sporty Styling With Practical Qualities and AUTOMATIC TRANSMISSION

OVER 50 EXCITING STANDARD FEATURES

- Including:
- Power
 - 2.5 litre 4 cyl. electronic fuel injected engine
 - Automatic transmission
 - Performance
 - Front wheel drive • Power rack and pinion steering • Power front disc/rear drum brakes
 - MacPherson strut front suspension
 - Front stabilizer bar • Full coil suspension
 - "All Season" steel-belted radial tires
 - Reliability
 - Light weight Delco-GM Freedom II Plus battery
 - Extensive anti-corrosion protection
 - Sporty Styling
 - Metallic paint • Dual rectangular headlamps with

- halogen high beams • Soft Ray tinted glass
- Custom tri-port wheel covers • Wide body side moldings • Black rocker panel • Front floor console • Sport steering wheel
- Convenience & Comfort
- AM/FM stereo with clock, dual front and rear speakers
- Fluidic windshield washer system • Sport LH remote mirror • Rear window defroster • Side window defoggers • Inside hood release • Fuel door remote release • Headlamp-On warning
- Easy entry reclining bucket seats with cloth trim
- Cut-pile carpeting • Acoustic insulation package
- AND MUCH MORE!

Lease from as low as **\$267/mo.**
MAKE NO DOWN PAYMENT
 *Based on 60 month GML lease to qualified retail buyers provided Security Deposit may be required. Some lease conditions may apply. 24, 36, and 48 month plans also available. Freight charges, insurance, license, and applicable sales taxes not included. See your individual dealer for freight charges.
 Dealer may lease for less. SEE YOUR PARTICIPATING GM DEALER FOR FULL DETAILS.

TOTAL NOW GM BACKS YOU BETTER! NEW 3 YEAR/80,000km TOTAL* COVERAGE. See your dealer for complete details.

INCLUDES \$500 CASH BACK DIRECT FROM GENERAL MOTORS†

YOUR LOCAL PONTIAC DEALERS

PONTIAC • BUICK • CADILLAC • GMC TRUCKS

†Manufacturer's suggested retail price for this new 1988 Pontiac Grand Am is \$13,375 equipped as described. Price includes \$500 Cash Back direct from General Motors. Dealer may sell for less. Vehicles may not be available immediately from dealer stock. Dealer order may be required. Freight charges, insurance, license, and applicable sales taxes not included. See your individual dealer for freight charges.

*\$500 CASH BACK offer available with the retail purchase of any new '87 or '88 Pontiac Grand Am purchased and delivered on or before May 31, 1988. You may choose to keep the cash, or you may apply it to your transaction. Offer includes dealer participation. Offer does not apply to fleet purchases. See your participating GM dealer about corresponding fleet incentives available on selected models.

SEE YOUR PARTICIPATING GM DEALER FOR FULL DETAILS. VEHICLE MAY NOT BE EXACTLY AS SHOWN. GOLDEN HORSESHOE GM DEALERS ASSOCIATION, c/o 180 Lesmill Road, Don Mills, Ontario, M3B 2T5

We're Right here for you.