

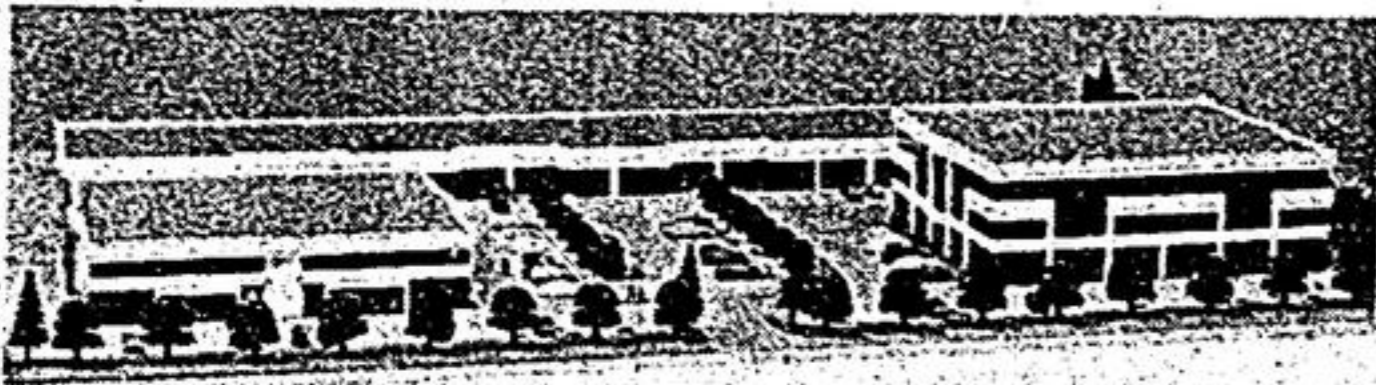
Real Estate

Economist & Sun / The Tribune

294-2200/640-2100

OFFICE INDUSTRIAL/CONDOMINIUMS MARKHAM, ONTARIO

PRESTIGE OFFICE AND LIGHT INDUSTRIAL UNITS



- Invest in your own office in the heart of Markham
- Strategically located at Warden Ave. and 14th Ave.
- Units from 653 square feet and up
- 75% financing available
- exciting design with ample parking

RIVER HEIGHTS
G.R.O.U.P

Visit our presentation centre and see the Architectural models and Video Presentation.

470-7171

Presentation Centre
3000 Steeles Ave. East
At Woodbine

RIVER HEIGHTS
G.R.O.U.P

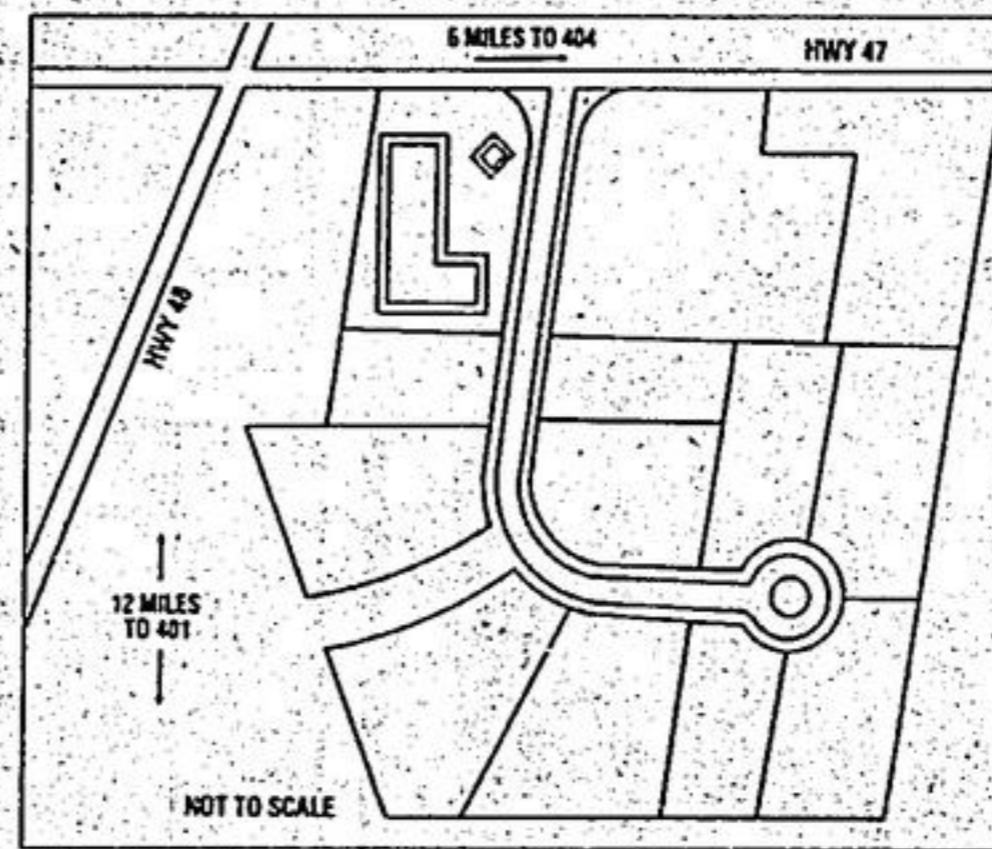
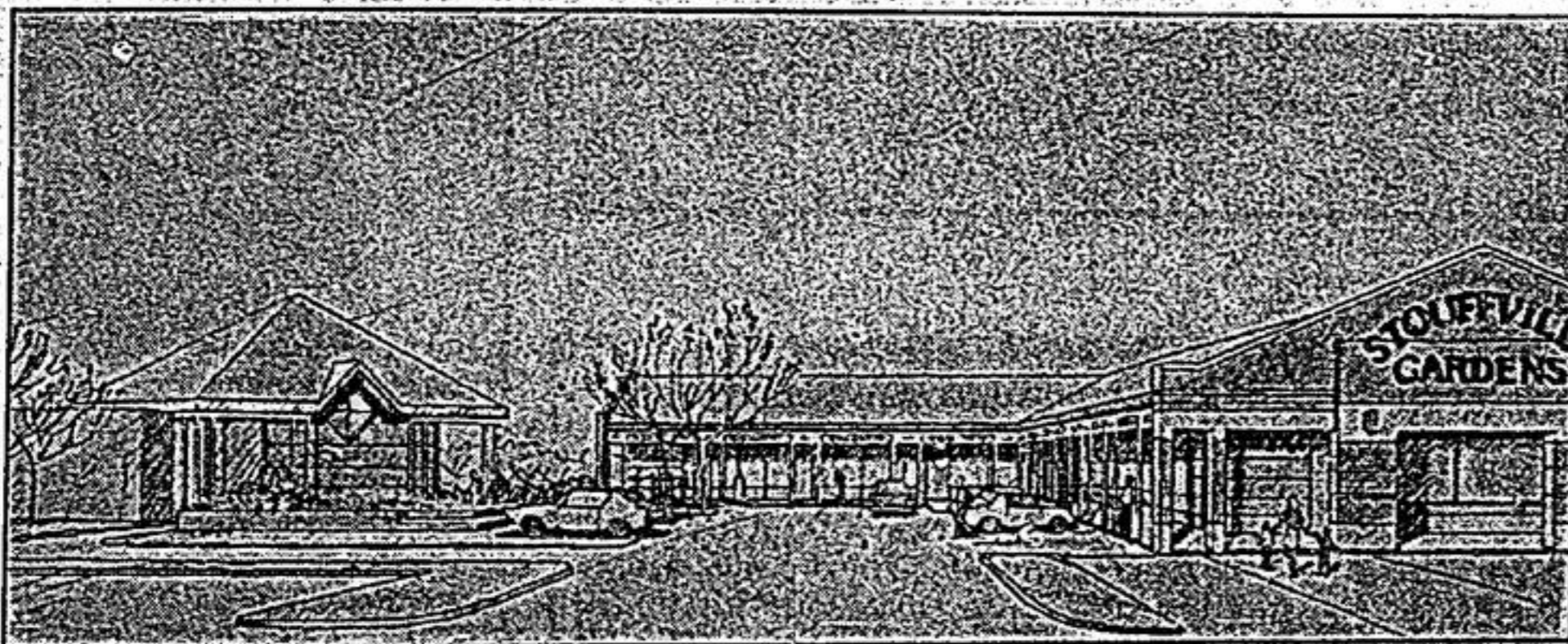


IS REAL ESTATE
THE CAREER FOR YOU?
WOULD YOU LIKE TO ASK

- HOW DO I BEGIN?
- WHAT EXPERIENCE DO I NEED?
- HOW MUCH TIME IS INVOLVED?
- HOW SOON CAN I EARN?
- AM I SUITED TO A REAL ESTATE CAREER?
- WHEN CAN I START?

CALL A LEADER IN REAL
ESTATE TRAINING
FAMILY TRUST CORPORATION

- UNIONVILLE—LINDA KILLACKY—477-1270
- MARKHAM—BETTY WEBBER—294-1372
- MILLIKEN—LESLIE CAVENDER—297-1335
- STOUFFVILLE—KATHY CLULOW—640-2082
- UXBRIDGE—GERRY MICHAEL—852-3443



*Office Condominiums

*Industrial-Commercial
Condominiums

- From \$70.00 a sq. ft.
- * Commercial - Retail Complex
- From \$12.00 per sq. ft.
- * Lot For Sale \$249,000/Acre

*Units from 700 sq. ft.

*Units For Sale or Lease

*Prominent Location on Main
Entrance to the Village of
Stouffville.

Wide Range of Uses, Sizes, Price Range — IDEAL INVESTMENT

stouffville gardens

W.J. Warren
and Co. Ltd. Realtor

477-8188

GILLESPIE
REAL ESTATE SERVICES INC.
P.O. BOX 222 CLAREMONT ONT.



CLAREMONT
1 1/2 storey Victorian Reproduction home
on 1/2 acre fully fenced lot in quiet village.
Features include sunroom and brick patio.
A must to see! \$255,000. For an appointment
to view call: Shelagh Mulvaney 649-
3336/649-3102/640-3336



JOANNE MCNEILL



BRIAN MEHARG

ARE YOU READY
TO EARN WHAT
YOU'RE WORTH?

We're looking for people who
are ambitious enough to go for the
gold... and get it. You'll be
backed by the resources of the
largest real estate organization in
the world, including an
international V.I.P.® referral
system and on-going training
through our exclusive Career
Trak® system.
Find out what over 5,800
CENTURY 21 neighbourhood
professionals across Canada have
going for them.

CALL TODAY:

- JOANNE MCNEILL
UXBRIDGE
852-6106/640-2600
- BRIAN MEHARG
STOUFFVILLE
640-3131/473-1979



GERRY MEHARG LTD.
MEMBER BROKER

GENE BEATTY

PAT SINCLAIR

404 & STOUFFVILLE SIDEROAD
CONTRACTORS - LANDSCAPERS - HOBBYISTS
Great location and lots of room for vehicles etc.
many barns and outbuildings including facilities
for 10 indoor car/truck parking. An antique col-
lectors dream, a home business owners desire.
Four bedroom home features potential loft on
3rd floor and new solid pine kitchen. Lots of
room to garden on close to 2 acres. \$499,900. Call
Pat Sinclair or Gene Beatty, 888-1640 or 773-
6163 / 727-1941

RE/MAX Above the Crowd! RE/MAX
Re/Max York Group Realty Inc.

OPEN HOUSE
SAT. APR. 16
1-4 p.m.
16th Ave. and
McCowan Area
20 Benhurst Crt.

Quiet Crt. premium lot 3 bed-
room, 3 baths, dbl. garage.
\$259,900.

427-7337
RED CARPET ADVANTAGE
REAL ESTATE

STOUFFVILLE
PRIVATE SALE

3 bedroom backsplit on
quiet court. Many upgrades.

\$197,900
Call 887-5211

PRIVATE SALE
MARKHAM VILLAGE
FINCHAM AREA

Georgian 2 storey, 3,000 sq. ft., 4
bedroom, 4 baths, 2 ensuite 1-5
pc., 1-3 pc., main floor library,
laundry, family room with fire-
place, greenhouse kitchen, pagoda
deck, c. air, c. vac, 2 garage
door openers. Brick walkways
landscaped fenced, mail delivery.
\$334,900. On quiet cres. Call:
294-2119

PRIVATE

Sturgeon Lake 84 ft. waterfron-
tage 2200 sq. ft. permanent house
3 bedrooms, 2 baths, dining
room, livingroom with fireplace
family room, with air tight electric
heat.

1-705-324-0413

Century 21
ARMOUR REAL ESTATE INC.
Member Broker

CONGRATULATIONS!!!



Wendy Stimson
Karen Gerrard, Manager of Cen-
tury 21 Armour Real Estate Inc.,
Unionville would like to congratu-
late Wendy Stimson on attaining
the exclusive "MILLION DOLLAR
CLUB" designation in the first
quarter of 1988. We wish Wendy
much continued success! Please
feel free to call Wendy at 477-
2533.

STOUFFVILLE
PRIVATE SALE

Custom raised bungalow in subdivi-
sion, approx. one acre plus private
beach lot. All fenced. Only \$329,000.

640-2194

GALLO
REAL ESTATE LTD.
474-1212 640-1200

ANNOUNCEMENT



BRIAN ELSON
Gallo Real Estate Ltd., is pleased to wel-
come Brian Elson to the Stouffville Sales
Team. He has completed the Real Estate
course and holds a B.A. in Economics.
Brian has been managing a small home
repairs business in the Stouffville area for
the past 5 years and would welcome calls
to assist you with any of your Real Estate
needs. Call Bus: 640-1200 or Res: 640-
6553.

FirstCall

Are you qualified for real estate sales but
not actively involved?

Contact me for a description of the
exciting opportunities offered through the
FirstCall Referral Associate program.
L.Y. Betty Webber, Manager Family
Trust Corporation Markham.

294-1372

METCALF
REALTY ASSOCIATES
40 KING ST. EAST
OSHAWA, ONT. L1H 1B3



OPEN HOUSE
Sun. Apr. 17
2-5 p.m.
BEAVER RIDGE ESTATES,
Cannington
77 Beaver Ridge Drive
Reduced to \$129,900
3 bedrooms, family room with airtight
stove, separate dining room, deck and
fenced yard. 40 minutes from Markham,
Hwy. 7 to Hwy. 12, north to Cannington,
left on Country Lane. Follow signs.
Pat Mapplebeck
1-728-1862 or 1-571-2300