

Crash injures three



A two-car collision at the intersection of McCowan and Stouffville Roads, Saturday, injured three people. The 1983 Honda, (above), was driven by Gordon Relf, Bethesda Sideroad, Whitchurch-Stouffville.

This 1986 Oldsmobile was driven by Dora Barnes of Scarborough. Both drivers and a passenger in the Relf vehicle were taken by ambulance to York Central Hospital, Richmond Hill. The Honda was northbound. The Oldsmobile was travelling west. Both cars were write-offs. —Jim Thomas

Sunkist FRUIT MARKETS

No Rainchecks
We reserve the right to limit quantities.
Prices in effect until Tuesday, Mar. 22

PRODUCE

FRESH FROM CALIF.
CAN. NO. 1 FIRST OF THE SEASON! TENDER

Asparagus
99¢
LB. LIMIT 5 LBS.
\$2.18 kg

FRESH FROM SOUTH AMERICA
FANCY CRISP JUICY

Granny Smith Apples
59¢
LB. \$1.30 KG

FRESH FROM CALIF.
CRISP & TENDER GREEN OR RED

Leaf Lettuce
49¢
EA.

FRESH FROM CALIF. OR MEXICO, CAN. NO. 1 GRADE SWEET & JUICY

Cantaloupes
99¢
EA.

FRESH FROM CALIF.
CAN. NO. 1 LARGE CRISP

Celery Stalks 59¢
EA.

FRESH FROM THE FLORIDA SUNSHINE TREE! SWEET

Florida Juice Oranges \$1.99
5-LB. BAG

FRESH FROM MONT. GREENHOUSES
CAN. NO. 1 TENDER TASTY

English Cucumbers 2/99¢

FRESH FROM CALIF.
CAN. NO. 1 TENDER

Spinach 79¢
BUNCH

GROCERIES & DELI

St. Lawrence
Corn Oil
3.99
3 LT JUG

F.B.I. Juices
Assorted Flavours
79¢
1 LT. PKG.

Jello
Jelly Powders
3 FOR 99¢
85 GR.

Ivory Dishwashing
Detergent
\$2.99
1.5 L. JUG

Motts Clamato
Regular & Spicy
\$1.69
1-L. BOTTLE

Scotties
Facial Tissues
89¢
PKG. OF 200

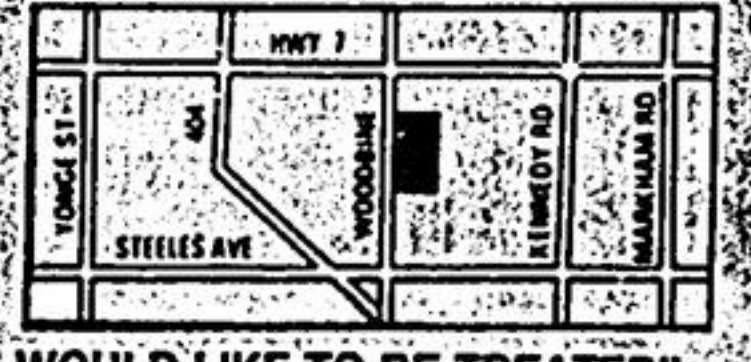
Mariposa
Gourmet Turkey
\$3.49
LB. \$7.69 KG

Italian
Romano Cheese
\$4.99
LB. \$11.00 KG

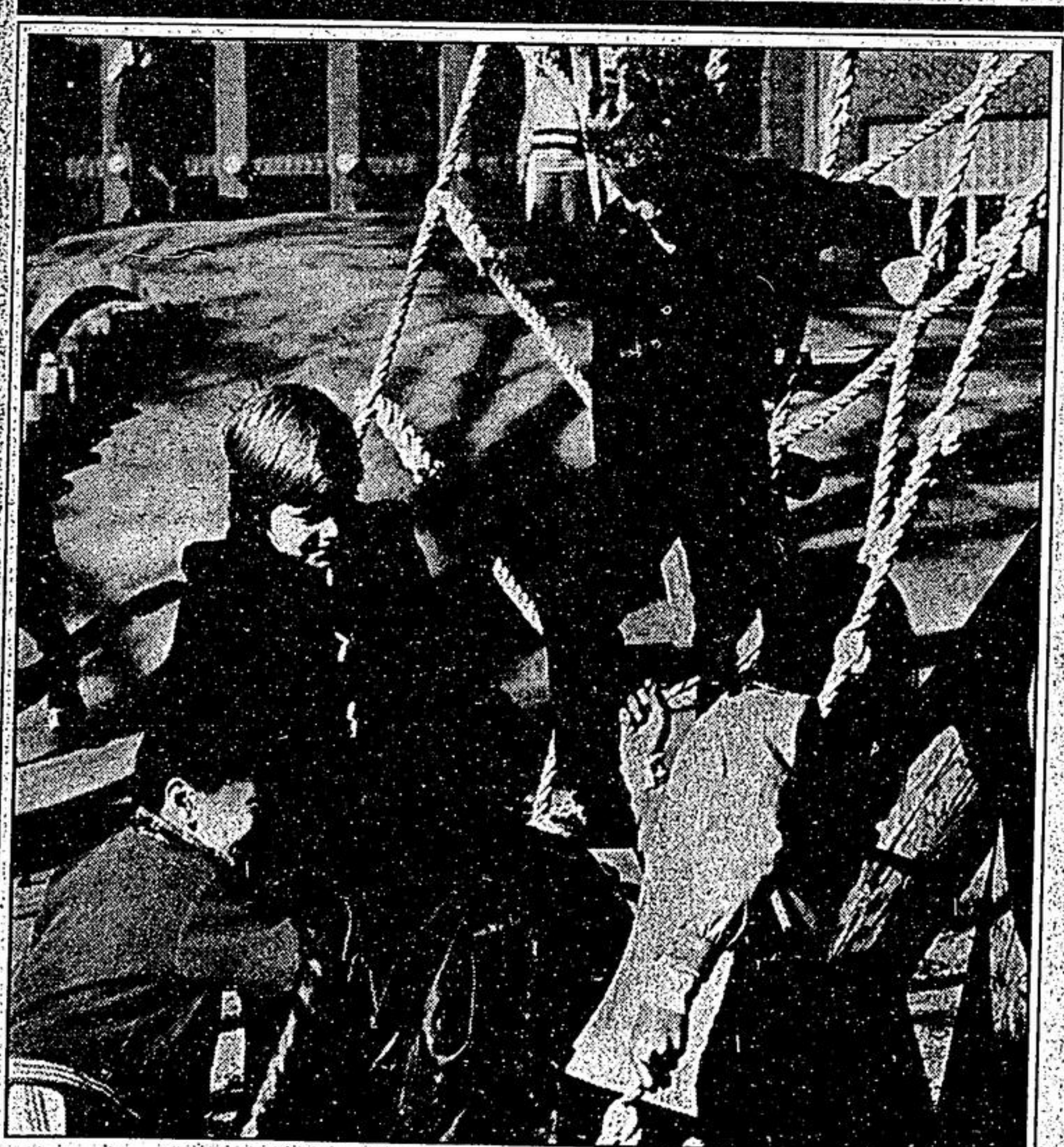
TRY OUR DELICIOUS DELI PARTY TRAYS!!!

7155 WOODBINE AVE.
475-1971

BUSINESS HOURS:
Mon. 8 a.m. - 9 p.m. Thurs. 8 a.m. - 10 p.m.
Tue. 8 a.m. - 9 p.m. Fri. 8 a.m. - 10 p.m.
Wed. 8 a.m. - 9 p.m. Sat. 7 a.m. - 9 p.m.
Sun. CLOSED



"WE TREAT OUR CUSTOMERS AS WE WOULD LIKE TO BE TREATED"



Child Care: Opening New Doors

The availability of quality, affordable and flexible child care is a key to opening up the future for many women in Canada.

The Government of Canada has recognized the importance of accessible child care in assuring women's economic equality by introducing The National Child Care Strategy—a balanced mix of program initiatives, offering a

wide range of choices to women who work inside or outside the home.

Highlights of the program include:

- the addition of 200,000 new child care spaces;
- the creation of a \$100 million Child Care Initiatives Fund for developmental projects for child care and special needs groups;

- the increase of the Child Care Expense Deduction from \$2,000 to \$4,000 for children six and under or with special needs;
- the phase in of a \$200 supplement to the Child Tax Credit for children six and under.

As Minister Responsible for the Status of Women, I invite you to learn how you and your family can benefit from the National Child Care Strategy.

Please write to me:
Barbara McDougall,
Minister Responsible for
the Status of Women,
House of Commons
Ottawa, Ontario K1A 6A6