

Uxbridge audiences welcome Anne of Green Gables return



An estimated 1,500 people attended three performances of 'Anne of Green Gables' at Uxbridge Secondary School, March 3, 4 and 5. The lead role of 'Anne' was played by Julie Henderson, (left). Applying a final touch-up is Michelle Garbutt, wife of show director John Garbutt.



Two members of the Avonlea Ladies' Aid, Jennifer Prentice, (left), as Mrs. MacPherson and Marianne Smith as Mrs. Pye, had prominent parts. Jennifer is 14 and in Grade 9. Marianne is 15 and in Grade 10. Both are members of the USS Music Theatre group, hosts of the show.



Kerry Prentice, (Marilla Cuthbert), introduces Julie Henderson, (Anne Shirley), to a new dress while Steve Kerr, (Matthew Cuthbert), looks on. In the play, Marilla and Matthew, sister and brother had their hearts set on adopting a boy. Then Anne arrived.



'And they lived happily ever after.' At least so it seems as Anne, (Julie Henderson), holds hands with boyfriend Gilbert Blythe, (Rick Bagshaw). The production's director was John Garbutt of Stouffville. The assistant director was Sharron Marshall and the producer, Bruce Brandon. — Jim Thomas

Fantastic performance -director

By JIM THOMAS
UXBRIDGE — Director John Garbutt called it 'fantastic'.

That will do. For it's difficult to come up with descriptives that do justice to a performance like 'Anne of Green Gables' presented by Music Theatre students of Uxbridge Secondary School.

The musical, that played to an appreciative audience of close to 1,500 people over three nights, had all the qualities to make people laugh and cry, even at the same time.

The production, involving a cast of 100, was totally extra-curricular with no class time whatsoever, Mr. Garbutt explained.

The brilliance of the acting, bordering on the professional, was all the more outstanding due to the fact many of the participants are from Grades 9 and 10.

Mr. Garbutt called them "very mature."

If not in age, certainly in perfection. The students' stage presence was unbelievable.

The roles were perfectly selected, including Anne, (Julie Henderson); Marilla Cuthbert, (Kerry Prentice); Matthew Cuthbert, (Steve Kerr); Gilbert

Blythe, (Rick Bagshaw); Dianna Barry, (Alisa Whittaker); Mrs. Blewett, (Elaine Tustin) and Miss Stacey, the Schoolmistress, (Amy Peck).

Performances by the Avonlea Ladies' Aid far surpassed acting

excellence expected from a high school stage. These parts were played by — Karen Winterstein, Jennifer Prentice, Mariana Djurakov, Nadia Brown and Marianne Smith.

The show was so personally pre-

sented, the audience felt a part. This was accentuated when members of cast left the stage and frolicked through the gym.

The lines that had to be learned, particularly by those in lead roles, boggled the minds of listen-

ers. The accompaniment provided by Richard Watson and Anne Baker, (piano); and Heather Thompson, (oboe); added to the

enjoyment of the show. The associate director was Sharron Marshall. The producer was Bruce Brandon.

— Jim Thomas

The *Care & Share Shoppe* Presents:
The Biggest Sale Ever!!



Pre-Inventory, Sale-Huge Savings Now
Select Your Gifts early!

50% off Moccasins - fur-lined and trimmed
Sizes Childrens 7 - Adult 6



Large Supply of beautiful brass tables
All shapes and sizes - just perfect for
your new living room, family room etc.

A Program of
Mennonite Central
Committee
Working toward a better world

39 Main St. W.
Stouffville Ont. Box 475
L4A 7Z7
(416) 640-1410

HOURS:
Tues. - Sat. 9:30 - 5:30
Friday 9:30 - 9:00

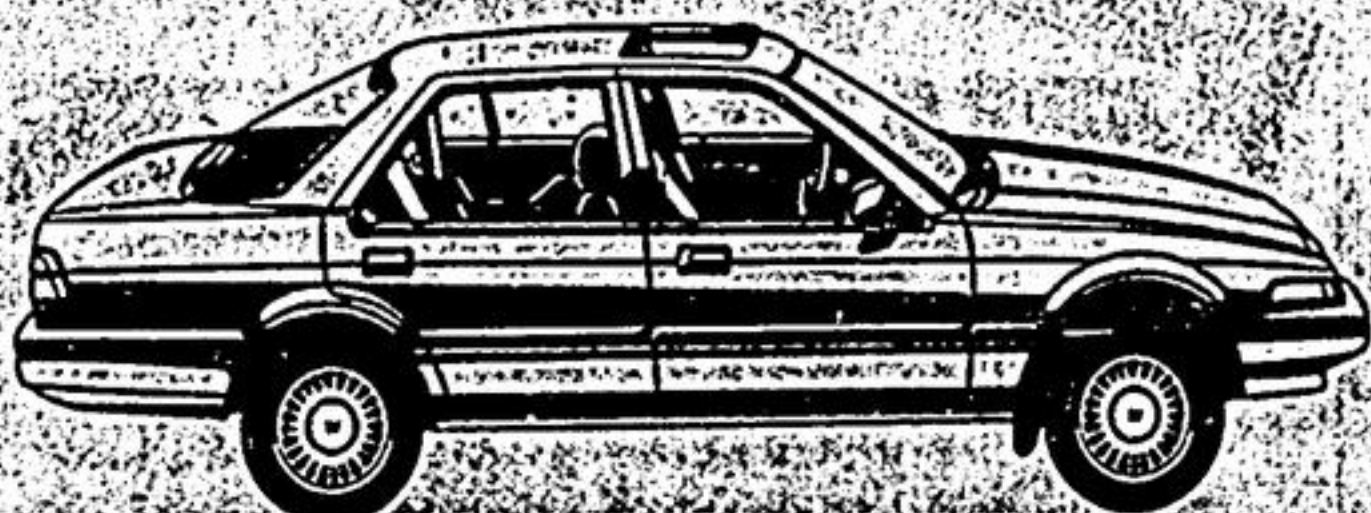
WINTER BREAK CONCERT

at
SPRINGVALE BAPTIST CHURCH
(Stouffville Road at Kennedy)

Wed. Mar. 16th
7 P.M.

FEATURING:
"The Light Singers" from
Liberty University
Lynchburg, Virginia

Plan now to attend this inspiring evening of music
Everyone welcome



HONDA ACCORD LX

Get to
Know Us
Better!

**RICHMOND HILL
HONDA**



11623 YONGE ST. SOUTH
884-9274 773-4542

Stouffville Rd.
Richmond Hill
Honda
Origin Mills