



# RE/MAX®

Re/Max Markville Realty Ltd. Rltr. 471-6600



JIM TREACY\*

**THE TREACYS\*  
OUR FAMILY  
WORKING FOR  
YOURS**



JOSEPHINE TREACY\*

**DON'T LIST YOUR HOME THROUGH THE TREACYS..... UNLESS**

- 1) YOU WANT A COMMITMENT IN WRITING REGARDING THE SERVICES TO BE PROVIDED.
- 2) YOU NEED A BUSINESS-LIKE APPROACH TO EVALUATING YOUR MOST VALUABLE ASSET.
- 3) YOU WANT TWO PEOPLE CONSTANTLY WORKING ON YOUR BEHALF.
- 4) YOU CAN PUT UP WITH THE CONSTANT COMMUNICATIONS REGARDING SELLING ACTIVITIES.
- 5) YOU MUST MAXIMIZE THE RETURN ON YOUR MOST MAJOR INVESTMENT.
- 6) YOU'RE READY TO MOVE IN A HURRY.

**SOLD IN FEBRUARY**



**EVERYTHING WE TOUCH TURNS TO SOLD**

**THE TREACYS\*, JIM AND JOSEPHINE, RES. 477-6274 BUS. 471-6600 (24 HR. PAGER)**

Re/Max markville realty ltd. rltr. (\*Sales Representative) (\*\*Associate Broker)

RE/MAX RE/MAX RE/MAX RE/MAX RE/MAX RE/MAX RE/MAX RE/MAX RE/MAX RE/MAX RE/MAX RE/MAX RE/MAX

(Toronto Direct) 640-4151  
(Mt. Albert) 473-3600



**Farquharson** REALTY LIMITED **realtor**

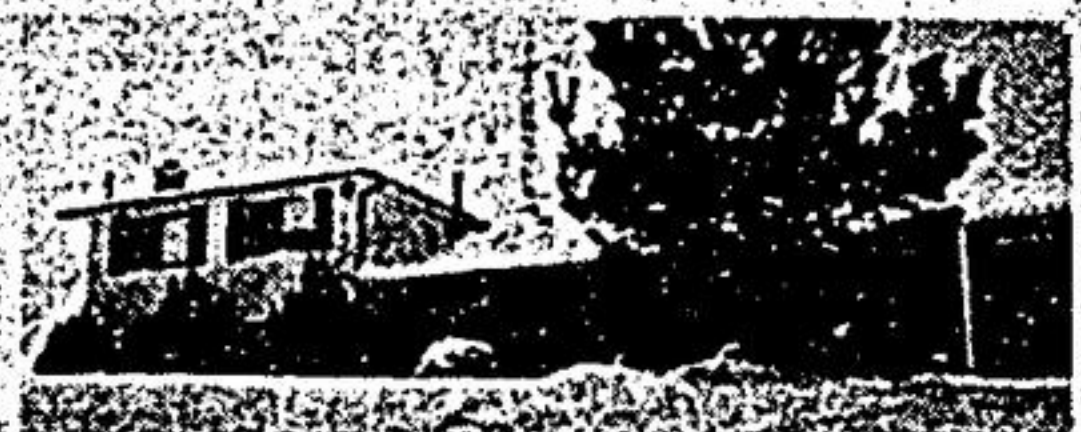
114 Main Street West, Stouffville, Ontario L0H 1L0  
"SERVING OUR COMMUNITY SINCE 1956"



**GRACIOUS VICTORIAN - UXBRIDGE**  
Outstanding 4 bdrm. home on oversized fenced lot - deluxe decorating, gourmet kitchen, elaborate mouldings & trim, gleaming hardwood, fireplace plus large heated garage/workshop/office. A home to be proud of at \$254,900. Jeannine Sheridan 640-4151 or 640-4101.



**STOUFFVILLE EAST - 10 ACRES**  
4 bdrm. country brick bungalow features hardwood floors, plaster construction, heat pump, air conditioning, 2 fireplaces, 3 baths, family room with walkout. Small outbuilding & fenced paddock. Ideal for the hobby farmer - won't last at \$299,900. Call Jeannine Sheridan 640-4151 or 640-4101.



**GOODWOOD EAST - 3 ACRES**  
Rambling 4 bdrm. sidesplit home features gorgeous view and easy access for commuters. Upgraded bldm. family room with fireplace, in-law or nanny suite. Won't last! \$264,900. Call Jeannine Sheridan 640-4151 or 640-4101.



**QUALITY PLUS - CUSTOM BUILT**  
Uxbridge - super 3 plus bdrm. backsplit, large country kitchen, separate dining room, pine den; 2 car garage, family room with brick fireplace & walkout to 1/2 acre professionally landscaped lot. Asking \$219,900. Call Colleen Brown 640-4151 or 852-7004.



REAL ESTATE LIMITED



**MARKHAM 5 BEDROOM**  
Southern exposure, nearly new, entrance from side door & garage to main floor laundry rm. modern master with make-up vanity & Roman tub, close to schools, quiet crescent, 2 walk-outs to recessed covered patio. \$269,900.00. Marg Perkins & Don Nelson 294-2990.

*Nature and Elegance*



**Luxurious Country Estates to be built on 1 to 1 1/2 Acre treed lots, built by Terresca Developments Inc. an International known Builder.**

Most scenic Country Estate Subdivision in Whitchurch Stouffville just east of #404 & Aurora Sdr. with its rolling hills, the Vivian Forest nearby for riding, skiing, jogging etc. several golf courses to choose from, Markham Shopping Mall within 10 min. It is a perfect place to raise a family. Several models to choose from, Builder may alter plans to suit within price range, additional space at extra cost. Room for tennis court, pool. Quality constructed homes, energy efficient, all brick, fully air conditioned, heat pump, large foyer, depending on models 2 storey high solarium, Jacuzzi, 4 bedrooms, several baths, sauna, library, Nanny's room or apartment for in-laws, fireplaces, family room, walkout kitchen with servery, separate dining area, several walkouts to decks, patio or garden, broadloom or hardwood, many extras. Summer possession. Some of the models are:  
The "Sonata", a sprawling Bungalow at \$470,000.  
The "Rhapsody", a stately 2 storey at \$547,000.  
The "Symphony" the largest one, over 4,000 sq. ft. at \$595,000.  
Please call for more details, plans and lot sizes.

**Joanne Schulz**  
REAL ESTATE BROKER

Woodbine Ave. & Davis Dr.  
Newmarket 853-1614. T.L. 773-6171  
Res: Uxbridge 852-3264  
REALTOR