

**Markham Heating**  
 & AIR CONDITIONING SYSTEMS  
 191 Wellington St. E., Unit 7  
 Markham  
 471-1748  
 Craftsmanship  
*A Fine Tradition*

# Tribune Community **FOCUS**

Doug Hackert  
 640-5339



**Stouffville Aluminum Siding & Windows**  
 Specializing in Replacement doors and windows

Serving Whitchurch-Stouffville, Uxbridge and area

A Metroland Community Newspaper

Wednesday, February 3, 1988

## Former SDSS star athlete

# Jim Hill teaches what he learned

By BRUCE STAPLEY  
**STOUFFVILLE** — When Jim Hill was a student attending Stouffville District Secondary School back in the '60s, starring on volleyball teams coached by Jim Rehill, he had no idea he'd one day be in a position to influence teenagers just as his own high school coach had done.

"Jim Rehill had a strong influence on my life," says Jim, who, for the past two years has been instrumental in the Guidance program at Brebeuf College School on Steeles Avenue in Willowdale. "He's a genuine human being, who gives so much to his students. I still consider him a very close friend."

The Rehill authority has been very apparent in Jim's teaching career, one that began at Brebeuf with 12 years in the physical education department. "I have fond memories of going to high school here," says the Stouffer Street resident. "The advantage of attending a school in a small town was great. For instance, I had an opportunity to be involved in many different sports."

Jim's proficiency at volleyball and basketball is still talked about by Jim Rehill today. And likewise, Jim's own career as a high school coach has been that much

more successful because of Mr. Rehill.

"I'm what you'd call an intense coach," says Jim. "I expect commitment and I've always obtained it." So much so his coaching record in basketball doesn't include a single losing season. His clubs have been to the T.D.C.A.A. finals on two occasions.

Jim's graduation from SDSS was followed by four years of physical education studies at Laurentian University in Sudbury. His basketball skills there helped carry the team to the Canadian National's in 1970.

He then spent a year at Queen's University in Kingston, before accepting a teaching position at Brebeuf, where he's remained ever since.

Jim was offered the chairmanship of the school's phys ed. department, but chose instead to pursue his growing interest in guidance. "I believe coaching and teaching physical education led to knowing kids on a different level," he says. "You come to realize you've really been involved in guidance all along."

With guidance now an important part of the high school program, Jim feels his own background gives him something to

offer kids by way of encouragement and understanding.

"The change has been good," he says. "I was getting a little stagnant and the aches and pains were beginning to catch up."

There's a price to pay, however. "I find I'm not as mentally fresh for coaching at the end of the day after talking with the kids about their career concerns, teachers, girlfriends and everything else. Sometimes there's a lot of pressure."

Jim says once again, his experiences at SDSS have gone a long way to helping him in his new area of specialization. "I was lucky. I had several teachers who took an interest in their students, people like Jim Rehill and John Marshall. This rubbed off on me."

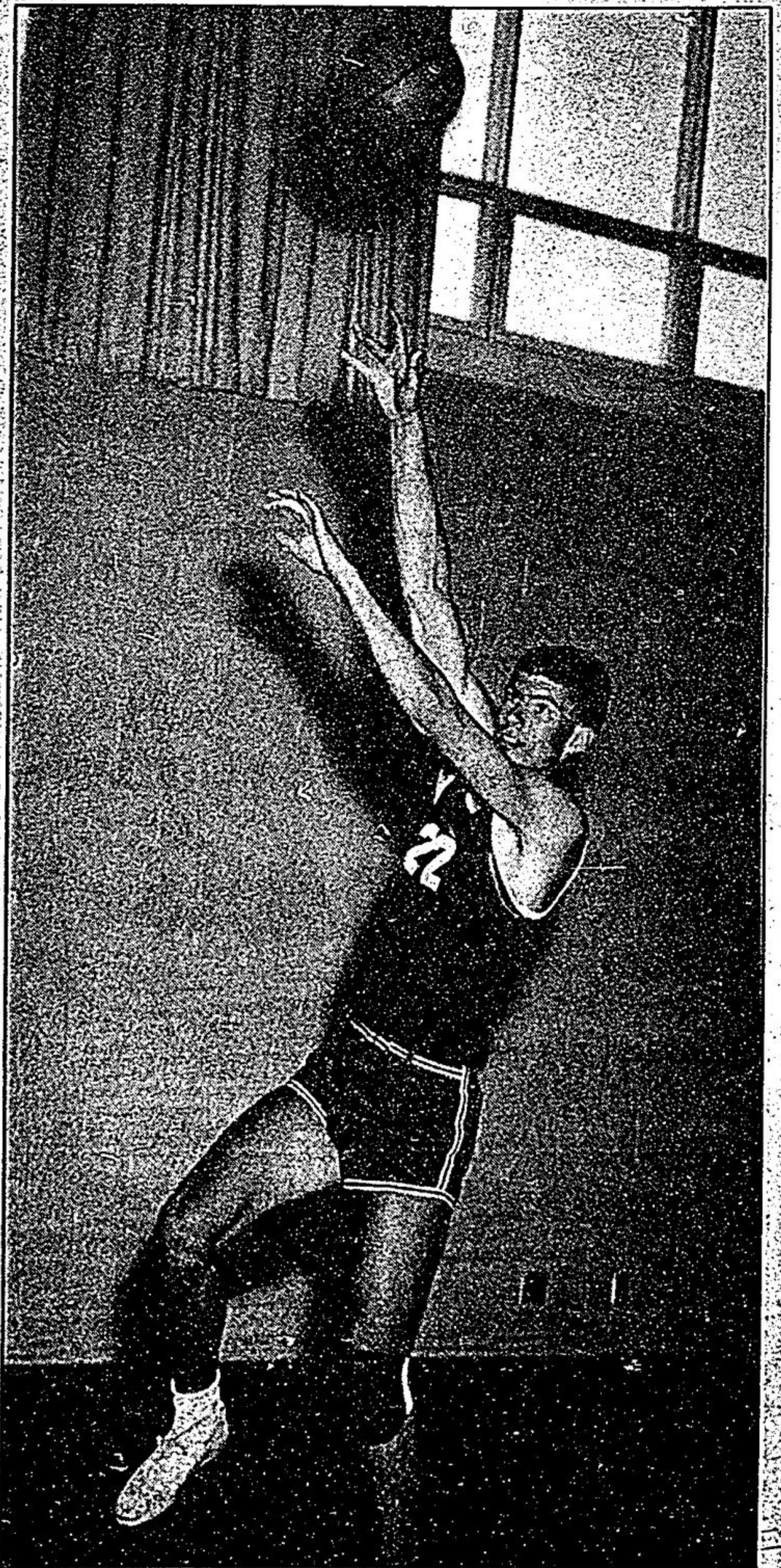
In discussing the teaching profession in general, Jim feels it's a good career choice if a person commits himself to it. "If you're only in it for security and money, you won't last."

He insists today's teacher must be a dedicated professional who enjoys young people. "And you must be comfortable with yourself," he insists. "Once you gain confidence you no longer see students as threats."

As for Jim's assessment of today's kids, he's optimistic.

"There's lots of good out there," he maintains. "Even when you become discouraged, something always happens to restore your faith."

Jim Hill — the right man for the right job, with an assist from Jim Rehill and the others whose patience and guidance continue to bear fruit.



**Shooting for success**

Jim Hill takes a shot at the basket during his final year at Stouffville District Secondary School in 1965. The local resident is now a guidance instructor at Brebeuf College School in Willowdale. He credits his career choice to the teachers he had at SDSS including Jim Rehill and John Marshall. Although his university major was physical education, he transferred to the guidance department, although he still coaches sports at Brebeuf.

## Museum hosts special events

In honor of Heritage Week celebrations Feb. 14 to 20, the Whitchurch-Stouffville Museum is hosting three special events.

On Sunday, Feb. 14, from 1 to 4 p.m., Ruth Burkholder and Marjorie Richardson will be conducting a genealogy workshop. This is especially for those who would like to get started finding their family roots, but assistance will be given to anyone with questions about their genealogy.

Monday, Feb. 15, 10 a.m. to 3 p.m., will see the Crafters give demonstrations of their skills. These will include spinning,

weaving and in-class instruction.

There will also be a tour for those interested in the behind-the-scenes workings of the Museum.

Lastly, on Thursday, Feb. 18, from 12 to 5 p.m., the 'EduKit' Coordinator will be present with kits created by the Museum for in-class instruction. There are eight in total on different topics, reflecting the history of Whitchurch-Stouffville.

The Museum will be open all week at its regular hours, 10 a.m. to 5 p.m., Monday to Friday. Refreshments will be served on each of the three special days.

**Ask Dr. Meade**  
 .../C-2

**Harness making**  
 .../C-3

**Dickson Hill student rep**  
 .../C-5 and 6

**Calendar of events**  
 .../C-8

**Sax player settles down**  
 .../C-9