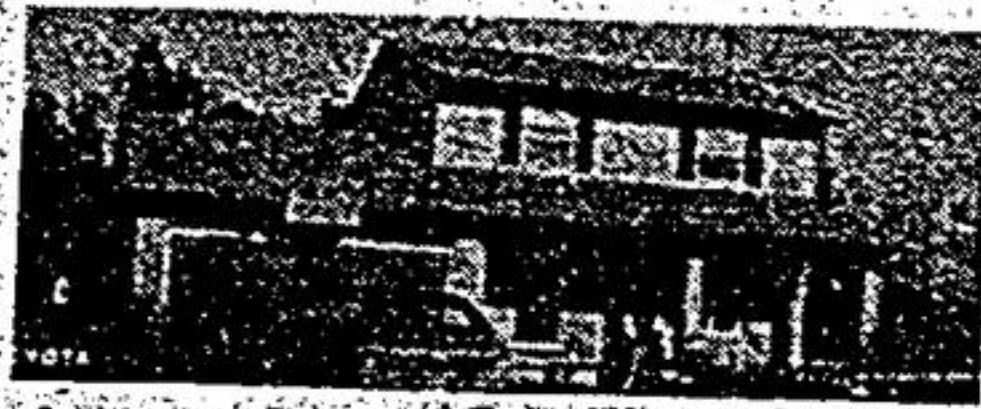


OPEN HOUSE WEEKEND

TAKE A LOOK AROUND YOUR NEXT HOME THIS WEEKEND.

OPEN HOUSE



OPEN HOUSE
SAT. JAN. 30 2 TO 4 P.M.
3 ROYAL OAK RD. MT. ALBERT
Ravine lot, cul-de-sac, 4 bdrm. B/R & AL home, main fl. fm. rm., 2 W/O, large deck, part fin. bsmt., W/O backs onto conservation area, 25 min. to Markham, dble. gar. Hostess Margo Greenaway 640-3131 or 473-2546.

OPEN HOUSE



OPEN HOUSE
SUN. JAN. 31 2-4 P.M.
BRICK BACKSPLIT \$184,900.
Main St. E. to Stouffer North to Stouffer E. to Vanzant (follow signs). Kim Reesor 640-3131.

OPEN HOUSE



OPEN HOUSE
SAT. & SUN. 2 P.M. - 4 P.M.
STOUFFVILLE - VIEW OF LAKE
1/4 acre estate home. 1-yr. old beauty, 4 bdrms., 2 1/2 bths., W/O bsmt., sep. liv. & din. rms., M/F fam. rm. W/Fpl., superb European kit., use of private beach - only \$327,900. Call John Morrison 640-3131.

OPEN HOUSE



OPEN HOUSE
JAN. 31, 2-4 P.M.
20 BERNICK CRES. STOUFFVILLE
Spacious 2 st. 4 bdrm. + den. Cent. vac. sec. sys., mn. fl. laundry & much more! \$269,900. Call Denise Pettitt today 640-3131



DON GELDART



IN SEARCH OF EXCELLENCE
1.8 ACRES STOUFFVILLE
Stunning 3 bdrm. bung., prof. decor, large eat-in kit. with loads of cupboards, spacious liv. & din. rooms, fin. basement with beautiful brick fireplace. Call Don Geldart 640-3131.

OPEN HOUSE



KELLY BURROWS
OPEN HOUSE
SAT. JAN. 30 2-4 P.M.
46 LLOYD ST. STOUFFVILLE
Main St. east of tracks, south on Lloyd St. 2 bdrm. bung. \$169,900. Kelly Burrows 640-3131.

OPEN HOUSE

OPEN HOUSE
JAN. 30, 2-4 CLAREMONT
Appealing 3 bdrm. bung. on 1 ac. country lot, W/O basement, rec. room with airtight stove, listed at \$187,500. Call Glenda McPherson for details 640-3131 or 649-2053.



KIM REESOR

GREAT STARTER \$154,000.
Solid brick 3 bed. in Stouffville. Lots of wood trim, hardwood flrs. Kim Reesor, Carla Magnante 640-3131.



VICTORIAN BEAUTY!!!
Stouffville - wood flrs., 5 btrs., 1/2 ac. treed. \$289,000. Kim Reesor 640-3131.



CONNY HIPPMANN



BE READY FOR SUMMER
Buy now — move in Spring! 4 bdrms., den, fam. rm., frpl., lrg. liv. & din. rm. Enjoy roses and grow your own vegetables. Beautiful lot min. to Markham & 404. Call Frank or Conny Hippmann 640-3131.



GREAT COMMUTING
Appealing 3 bdrm. bung. on 1 1/2 ac. country lot, w/o basement, rec. room with airtight stove. Listed at \$187,500. Call Glenda McPherson for details 640-3131 or 649-2053.



FRANK HIPPMANN

OPPORTUNITY KNOCKS
Close to 404 Woodbine area. Proposed comm.-ind. 7 rm. bung., large l/r, frpl., large kit., 20 x 40 barn, with hydro & water. \$330,000. Call Frank Hippmann 640-3131, 640-1149.



MURRAY WAGG

A COUNTRY HOME IN NORTH PICKERING
\$269,000 buys you this spacious country home. 2 1/2 lovely treed ac., lge. pond for summer and winter fun. Durham 23 km. N. of Hwy. 7. Call Murray Wagg 640-3131.



ROSS HETHERINGTON

PRIME INVESTMENT PROPERTY
51 ac. on Stouffville town water, 1/4 mi. N. of Main St., level land, good house and barn. Call Ross Hetherington 640-3131, Res. 640-2441.

WE'RE LOOKING FOR A ...
Special kind of family to enjoy classic 4 bdrm. home on quiet street in Stouffville. Sunny kit., fam. rm. with f/p, lux. master suite. Call Norma Larkin 640-3131.

STOUFFVILLE
640-3131/473-1979
UXBRIDGE
852-6106/640-2600
PORT PERRY
985-7371



GERRY MEHARG LTD.
Member Broker

STOUFFVILLE
640-3131/473-1979
UXBRIDGE
852-6106/640-2600
PORT PERRY
985-7371

PRIME INDUSTRIAL LOTS
1.14 - 4.56 acres
ZONED - SERVICED - READY TO GO
From \$250,000 Per Acre
CALL KEN McDONALD
477-7181

Peter Le Grice
Real Estate Ltd. Realtor

UNIONVILLE RAVINE
Custom Bramalea, executive, 2600 sq. ft. 4 baths, upgrades, Heated pool, 2 decks, w/out basement, interlocking. \$286,900.
477-9373.

PARKINSON RD. MARKHAM
PRIVATE SALE

Spotless, 2 storey, 2000 sq. ft. home, 3 bdrm., 2 1/2 baths, f.p., c. air, neutral decor, dbl. garage. \$206,500.

471-1845

PRIVATE SALE

UNIONVILLE COUNTRY ESTATE DRIVE

State home on 1 acre beautifully landscaped 4 bdrm., 4 baths, triple garage, concrete pool, many extras. Call:

887-1096