

ENTRUST FINANCIAL CORPORATION



BILL BLAINÉY

Entrust Financial Corporation is pleased to announce the appointment of Bill Blainey as a mortgage representative. Bill will be joining Cathy Edwards & Dianne Hewitt in the Markham and Unionville areas. Bill has lived in Markham all his life and looks forward to serving his friends and meeting new clients in this area.

WE OFFER:

- arranged 1st and 2nd Mortgages
- bad credit or low income accepted
- buying of VTB's
- refinancing or debt consolidation
- institutional, private and open funds

So if you are having problems arranging financing, give us a call:

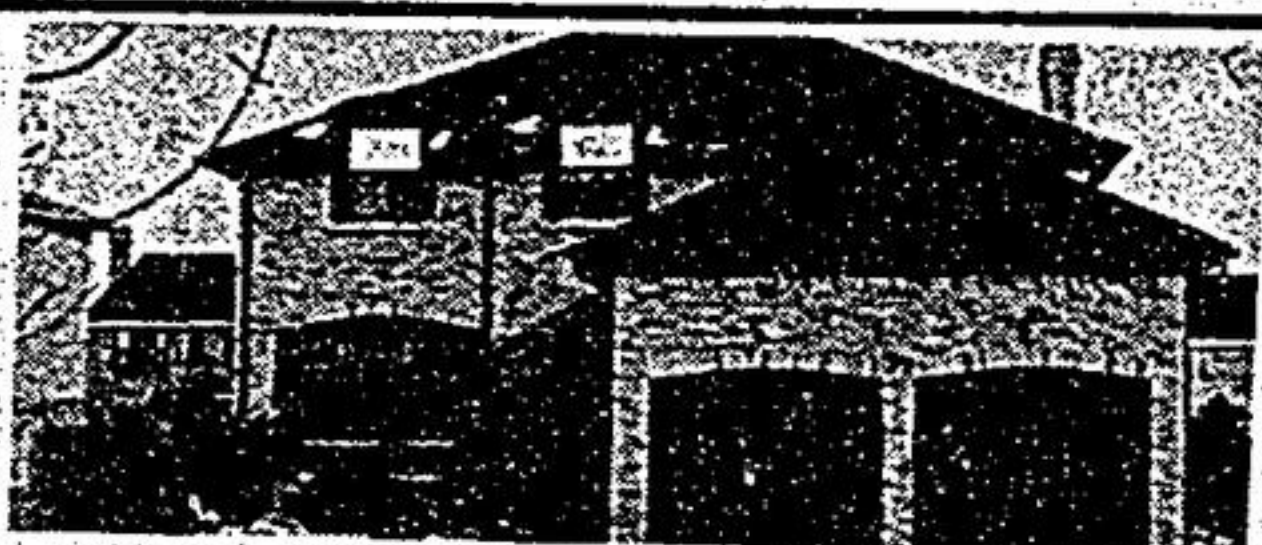
445-1234 (on Pager)

7 DAYS A WEEK - 7 A.M. TO 11 P.M.

5 year CMHC funds 11 1/4% — closing March 1, 1988 or sooner.
5 year conventional funds 11 1/2%, 60 day commitment.



JOHN WANNOP



UNIONVILLE'S EXCLUSIVE ADDRESS

Luxurious master retreat with 5 pc. ensuite and dressing rm. Large sunny greenhouse kit. with w/o to (huge) two tiered deck. Adjoining D/R with french drs. to formal liv. rm. Relax in the cozy M/F fam. rm. beside the old brick F/P, wet bar and stained oak floors with w/o to deck. Open concept professionally fin. bsmt. boasts F/P, wet bar, three pc. bath. and study +. Offered at \$409,000. For further info. or to view call John G. Wannop W.J. Warren Real Estate 477-8188 or Home Number 471-1596.



FOR SALE
W.J. WARREN
477-8188



REAL ESTATE LTD. REALTOR
477-2223

BEAUTIFUL ESTATE LOT IN AREA OF PRESTIGIOUS HOMES
Wooded and potential pond site. Woodbine and Bethesda Sideroad. Asking \$165,000.

Call Marge Miller Sales Rep.

HOWARD S. LEE REAL ESTATE LTD.
477-2223 or 221-3797

INDUSTRIAL LOT FOR SALE

1.51 ACRES

IGW Zoning (Open Storage)
\$302,000.

Aurora Road & Hwy. 404

294-1671

UNIONVILLE RAVINE

Custom Bramalea, executive, 2600 sq. ft. 4 baths; upgrades, Heated pool, 2 decks, w/out basement, interlocking.
\$286,900.

477-9373.

FirstCall

Are you qualified for real estate sales but not actively involved?

Contact me for a description of the exciting opportunities offered through the FirstCall Referral Associate program.

L.Y. Betty Webber, Manager Family Trust Corporation Markham.

294-1372



dawn & mike ireton



MR. INVESTOR!

Here's an income-producing prime commercial property worth investigating. This most attractive bldg. has a Main St. location, 3 storefront offices with excellent professional tenants and 2 spacious apartments. A price of \$489,900 makes this one of the best commercial buys in Stouffville. Call mike or dawn ireton 773-9335.



KAREN GERRARD

If you're ready to work you should consider a career in real estate!
Call Karen Gerrard
477-2533



ARMOUR REAL ESTATE INC.
Member Broker

BRICK BUNGALOW GOODWOOD - 3/4 ACRE

Spacious 3 bedroom home with large 2 car garage, 2 fireplaces, r-i. central vac, built-in dishwasher, skylight, oak trim throughout, spring possession. Asking \$206,900.

Phone 640-7883 after 5 p.m.
Serious inquires only
No agents please

Century 21

GERRY MEHARG LTD.
Member Broker



JOHN MORRISON



STOP LOOKING NOW THIS IS IT!!

Fabulous estate home, 3/4 ac. Stouffville & North. 4 bdrm. sep. liv. & din rm. huge kit. m/f fam. rm. w/o bsmt. pl. finished. Overlooks lake, 1/19th of private beach. \$327,900. Call to view John Morrison 640-3131.



BALLANTRAE 3/4 ACRE HOME

Cust. brick 1 yr. old 4 bdrm. 2 1/2 bths, shows like a model. A must see only \$319,900. Call John Morrison 640-3131 or Res. 640-3988.



STOUFFVILLE IN TOWN

3300 sq. ft. 6 bdrm. 3 1/2 baths, only 2 yrs old. 1/G cust. pool all fenced, c/air, c/vac. gourmet kit, fam. rm. w/pl. many up-grades, only \$299,000. Call John Morrison 640-3131 or Res. 640-3988.



ANTIQUE BUFFS INVITED

Stately home, most renovating done, new insul. drywall, wiring, wonderful oak trim & pocket doors, 11" basebds, beautiful stairway, in Mount Albert, \$189,900. Margo Greenaway 640-3131.

CUSTOM SIDESPLIT \$232,000

Quality plus, 4 bdrm. beautiful fm. rm. pine or ash parquet floors cust. pine kit. cupbds. pella windows, mahogany Trm. energy efficient on 2 ac. 35 min. from Markham. Margo Greenaway 473-1979, 640-3131.



BUNGALOW ON 2 ACRES

Mt. Albert. 3 bdrm. 1 1/2 yr. old, marble foyer, large eat-in kit. oak cupbds. 50' deck, 3 walkouts firepl. A lovely newer home, in desired area. Margo Greenaway 640-3131 or 473-1979.

BEAUTIFUL BUILDING LOT

Kirkfield east-14 ac. \$30,000 a great investment or build your dream home, permits avail. Buy now. Margo Greenaway 640-3131 or 473-1979.

MT. ALBERT RAVINE LOT \$186,000

4 bdrm. 2 storey on cul-de-sac great fm. home main fl. fm. rm. with fr. pl. & w/o to deck & nature. 7 yrs. old, backs onto conservation area. A good buy. Margo Greenaway 640-3131 or 473-1979.

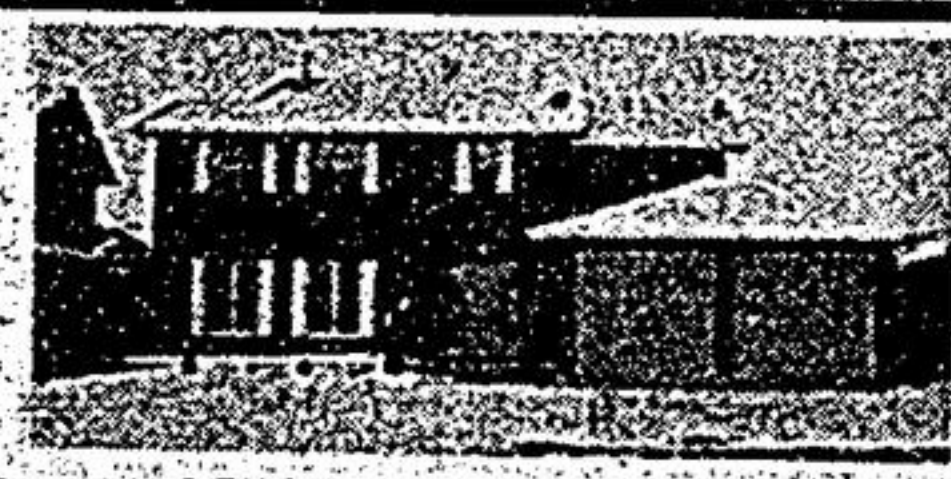


COUNTRY LIVING BETHESDA

Desirable estate location. One owner home parklike 150' x 200' lot. Circular Dr. 5 bed. fam. rm. f/d stone f.p. liv & din rm. overlooking country splendor. \$295,000. Frank or Conny Hippman 640-3131, 640-1149.



DENISE PETTITT



AFFORDABLE LUXURY!

Beautiful 4 + bdrm. home, open concept, fam. rm/kit. area a must to see. Call Denise Pettitt 640-3131 for details.



KIM REESOR
RES: 640-4138

JUST STARTING OUT \$154,000

3 br. brick loads of charm with wood trim & hardwood flrs. Carla Magnante & K. Reesor. 646-3131.

A WELCOME HOME \$184,900

Situated on a quiet court mature landscaping, large kit overlooks fr/airtight stove a pleasure to show. K. Reesor 640-3131.

UNDER CONSTRUCTION!! \$239,000

New Stouffville Greenpark, 60' frontage many features. K. Reesor 640-3131.



KELLY BURROWS



STOUFFVILLE GREENPARK

2280 sq. ft. new home features mn. flr. fam. rm. with floor to ceiling f/p form. din. rm. spacious kit. with w/o 4 bed 3 baths. Call Kelly Burrows 640-3131, 640-7886.

LLOYD ST. \$169,900

Stouffville immac. 2 bdrm. fin. rec. rm. w/woodstove and washroom, 1 car gar. Call Kelly Burrows 640-3131, 640-7886.



DON GELDART



OFTEN SOUGHT. SELDOM FOUND 1.8 AC. STOUFFVILLE

Charming cust. built 3 bdrm. bung. prof. pine decor, large eat-in kit. with loads of cupboards, spacious liv. & din. rooms. fin. basement with pool table room & large brick fireplace. Call Don Geldart. 640-3131.

THE LARGEST REAL ESTATE ORGANIZATION IN THE WORLD.
EACH OFFICE IS INDEPENDENTLY OWNED AND OPERATED.

© and (TM) trademarks of Century 21 Real Estate Corporation.