

# Century 21

GERRY MEHARG LTD.  
Member Broker

**STOUFFVILLE**  
640-3131 / 473-1979

**UXBRIDGE**  
852-6106/640-2600

**PORT PERRY**  
985-7371

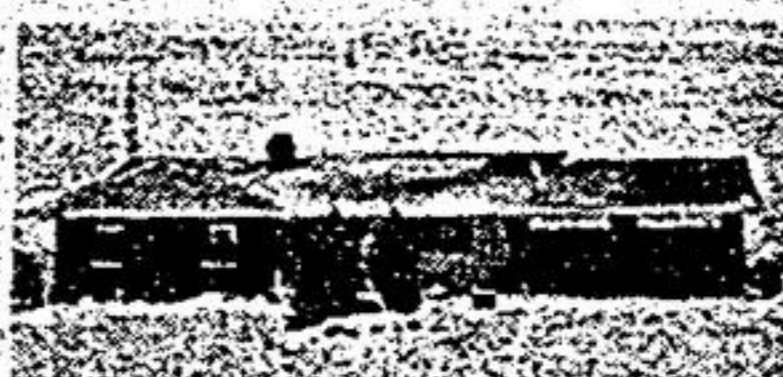


**KELLY BURROWS**

**LLOYD ST. \$169,900**  
Stouffville, immaculate 2 bdrm. Finished rec. rm. w/ woodstove and washroom, 1 car garage. Call Kelly Burrows, 640-3131, 640-7886.



**BUSINESS OPPORTUNITY IN GOODWOOD**  
Excellent high traffic location. Business plus well maintained living quarters listed at \$330,000. Call Don Geldart, 640-3131.



**OFTEN SOUGHT — SELDOM FOUND**

Absolutely stunning custom built 3 bdrm. bung. prof. decor. large eat-in kit. with loads of cupboards, spacious liv. & din. rooms, fin. bsmt. with beautiful brick fireplace. Call Don Geldart, 640-3131.

**TIRED OF RENTING!!**  
Just right for starting out, brick 3 bdrm. in town of Stouffville, just \$154,000. Kim Reesor or Carla Magnante, 640-3131.

**CLASSIC CENTURY — \$289,000**  
Located on large private yard in Stouffville. 5 large bdrms., formal lr. & dr. One of a kind. Call Kim Reesor, 640-3131.



**KIM REESOR**



**JUST LISTED — JUST LISTED**

Quiet court location, mature landscaping entertain friends, kit. overlooks fam. rm., 2 baths. Call to see Stouffville. Kim Reesor, 640-3131.



**BRAND SPANKING NEW**  
Large spacious Greenpark in Stouffville, bright kit. Large lot, call for many extras. Kim Reesor, 640-3131.



**19TH AVE. — \$299,000**  
Call Kim Reesor, 640-3131.



**EXECUTIVE COUNTRY LIVING**

**NOW REDUCED!!**  
¾ acre in Ballantrae. Cust. 4 bdrm. estate home. Beautiful setting for this 1 year old house. Now only \$319,900. To view call John Morrison, 640-3131 or res. 640-3988.

**THINKING OF SELLING YOUR HOME?**

Let's have a cup of coffee together, so that I may show you how my marketing plan for your home will give you the highest possible price in the shortest possible time.

Call me now for a FREE evaluation of your property.

**John Morrison**  
Off. 640-3131  
Home 640-3988.



**PRESTIGE LOCATION \$279,000**

6 bdrm. exec. home in Stouffville. All the luxuries you expect - HW floors, sunken liv., sep. din., gourmet kit., M/F fam. w/fpl., c/air, c/vac, pool, w/o bsmt. plus Nanny suite. To view call John Morrison 640-3131.



**STOP LOOKING NOW - THIS IS IT!!**

Fabulous estate home - ¾ ac., Stouffville north, 3 bdrm., sep. liv. & din. rm., huge kit., M/F fam. rm., W/O bsmt. pt. finished, overlooks lake, 1/19th of private beach - \$327,900. Call to view John Morrison 640-3131.



**STOUFFVILLE - LAKE AREA**  
Cust. built 4 bdrm. home, large fenced lot, kit. with W/O to deck, fam. rm. w/fpl., fin. bsmt., dble. gar. A definite must see. Only \$229,000. Call John Morrison or Muriel Edwards 640-3131.

**SUPER STARTER \$139,900. JUST LISTED!**

In Zephyr, 3 bdrm. bung. on ¾ ac., open concept, cust. brick home, next to horse park, so bring your horses. To view call John Morrison 640-3131 or 473-1979.



**MT. ALBERT STATELY HOME**

\$189,900. 4 bdrm. Most renovating done with quality plus - on Alice St. 66' x 132' lot. Frpl. in den, oak trim, 11' basebd., double gar. Ready for your antiques. Margo Greenaway 640-3131 or 473-1979.



**2 ACRE RAVINE LOT**

Mt. Albert. 1½ yr. bung., marble entrance, 3 walkouts, deck along entire back, magnificent view. \$229,900. Margo Greenaway 640-3131 or 473-1979.

**BUY NOW BEFORE INFLATION**

Good investment or build your retreat home. 14 acres. \$30,000. Just east of Kirkfield. Call Margo Greenaway 640-3131 or 473-1979.



**MARGO GREENAWAY**  
RES. 473-2546



**GARRY KNOTT**  
RES. 281-3320



**KIM REESOR**  
RES. 640-4138



**EARL DOWSNELL**  
RES. 705-426-7024

**UXBRIDGE OFFICE**



**DENNIS IRWIN**  
RES. 852-5009



**TOM DORAN**  
RES. 705-357-3848



**BUD MORRISON**  
RES. 852-5307



**SHIRLEY LONG**  
RES. 705-357-3886



**OPEN HOUSE**

11:00 TO 1:30

THURS. JAN. 14

3 ROYAL OAK RD

Mount Albert. \$186,000. Super fm. home; 4 bdrm.; ravine lot on cul-de-sac, main fl. fm. rm., fr/pl., w/o to deck - also part fin. bsmt. with w/o. Hostess Margo Greenaway 473-1979 or 640-3131.

**FOR RENT**

Stouffville 4 bed. house, 2 fireplaces, fin. basement, large lot near schools. \$1500/mo. plus util. Jan. 15 occ. Call Ross Hetherington 640-3131, 640-2441.

**CANNINGTON EAST**

98 acre farm, 75 acs. workable, very productive soil, large barns, 4 bedroom home, oak floors, tastefully decorated, pool, walkout, deck; \$184,900. Dick Fintelman 640-3131, res. 852-5531.

**THE LARGEST REAL ESTATE ORGANIZATION IN THE WORLD.**  
EACH OFFICE IS INDEPENDENTLY OWNED AND OPERATED.  
© and (TM) trademarks of Century 21 Real Estate Corporation.