

Real estate

New Century 21 office

Century 21 has opened its first franchised real estate office in Thornhill, Century 21 Markhill Ltd.

Located at 7666 Yonge Street (at John St.), Century 21 Markhill boasts of its unique office — a totally renovated heritage home, saved from the ax of developers and integrated into a new and modern shopping plaza development, in the heart of Old Thornhill.

Phenomenal growth

"We chose Yonge and John St. as the location of our new office because of the phenomenal growth of the area. By providing our sales associates with a modern, well-equipped office with lots of parking, and within easy access of the areas they service, and management support available all day and all night, homeowners listing with our office can expect maximum service from all our sales associates," says Justin Montano, owner/manager of the new franchise, with 17 years of real estate sales experience, seven of them in the Metro Toronto and surrounding areas and an MBA graduate of UCLA.

Linked worldwide

As part of the Century 21 system, Century 21 Markhill is linked to approximately 6,700 Century 21 offices throughout Canada, the United States, Japan, and 4 European countries — the U.K., France, Belgium, and the Netherlands, via the Century 21 VIP Referral System. This network of independently owned and operated offices means wider exposure for listed properties, more options for

buyers and an efficient system for national and international relocation.

In addition, Century 21 Markhill sales associates have access to the most definitive career development program available in the real estate industry today — the CareerTrak Training Program.

Career path

Under this program, Century 21 sales associates have the opportunity to develop a career path in any area of real estate such as: residential sales, industrial, commercial, and investment sales, referral/relocation, or sales management.

The CareerTrak program enables Century 21 sales associates to thoroughly prepare themselves to more professionally service clients through training in every aspect of the real estate process: listing, selling, financing, business planning and more.

Moreover, homeowners listing with our office will now benefit from more than \$35 million (US) international advertising campaign, designed to attract more buyers — internationally, nationally, regionally, and locally," said Montano. "Added to all of this is our own clear and up-to-date knowledge of the rapidly changing local real estate market."

In 1986 alone, Century 21 brokers and sales associates participated in approximately 700,000 real estate transactions, representing approximately \$50 billion (U.S.) in gross sales.

Century 21 Markhill's new phone number is 764-8833.

Commercial/Industrial REAL ESTATE

INTRODUCING

stouffville gardens

IDEAL INVESTMENTS
PRECONSTRUCTION
PRICES

- ★ Office Condominiums
- ★ Industrial-Commercial Condominiums
- ★ Commercial-Retail Complex
- ★ Lots For Sale
- ★ Units from 700 sq. ft.
- ★ Units For Sale or Lease
- ★ Prominent Location on Main Entrance to the Village of Stouffville

Wide Range of Uses, Sizes, Price Range
IDEAL INVESTMENT

477-8188



W.J. WARREN & CO. LTD. REALTOR

FirstCall

Are you qualified for real estate sales but not actively involved?

Contact me for a description of the exciting opportunities offered through the FirstCall Referral Associate program.

L.Y. Betty Webber, Manager Family Trust Corporation Markham.
294-1372

WANTED

Small acreage suitable for house, will pay cash, any closing, no agents. Call:

221-8324



474-1212 640-1200



NEW LISTING - WEST END OF TOWN
On large lot, 79' frontage, 4 bedroom sidesplit, family room with brick fireplace, rec room, immediate possession, move-in condition, priced to sell at \$199,500. Call Ross Gallo.

5 ACRES

On Hwy 48, handyman's special, 3 bedrooms, aluminum siding home. Asking \$124,900. Vendor will hold a mortgage at 11%. Call Ross Gallo at 640-1200.



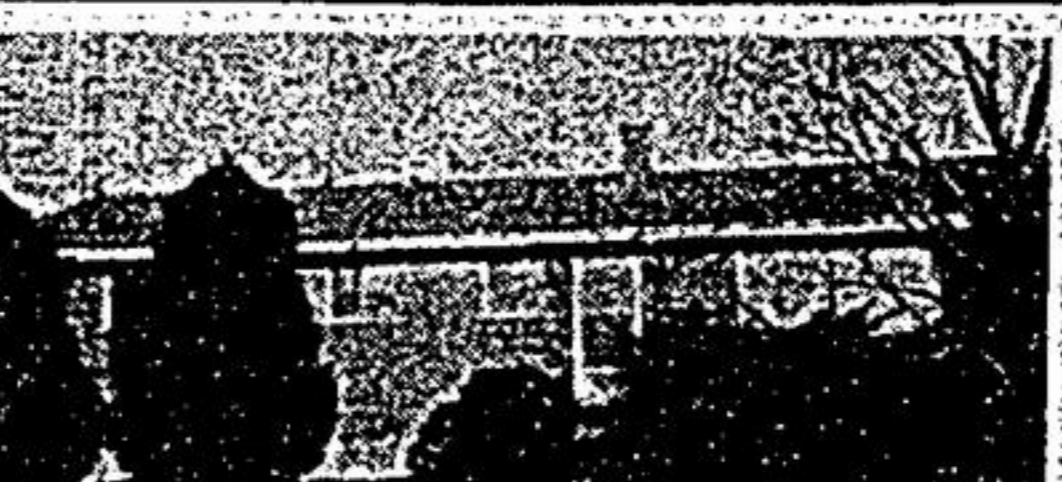
ONE OF A KIND

Situated on 10 acres park-like setting with 6 acres of hardwood bush. This custom home features 4 bedrooms, sunken living room with one wall brick fireplace, walk-out basement, huge rec room with woodstove and much more. Call Ross Gallo.



SPRAWLING CUSTOM RANCH BUNGALOW

On 1/2 acre lot. Features superb construction, large foyer with circular staircase to basement area. Huge family room with beautiful corner fireplace, spacious kitchen with walkout, main floor laundry, 3 baths, 3 car garage. 1 YEAR NEW! Come and compare. Immediate possession. Listed at \$249,900. Call Ross Gallo.



ATTENTION FARMERS

We have available a good corner farm located on a paved road 5-10 minutes out of Port Perry and composed of 96 acres featuring a 20 year old, 4 bedroom brick home. The outbuildings consists of an L-shaped barn, pig barn, large steel drive shed and 2 steel grain bins. Don't hesitate, the price is right and finance available. Call Alan Elson or Earl Elson at 640-1200.

YOUR DREAM A HORSE FARM?

We have one waiting for your inspection. Complete with arena, 18 box stalls, separate quarantine barn and 3 bedroom house, all on gorgeous rolling 30 acre parcel with year round stream. Call Earl Elson or Alan Elson at 640-1200.

THE GOOD WILL OF THOSE WE SERVE IS THE FOUNDATION OF OUR SUCCESS



NEARLY NEW! BARELY USED!
\$238,500. Approximately 7 months old, 2200 sq. ft. Stouffville Greenpark home, 4 bedrooms, centre hall plan (open), southern exposed backyard. Backs onto park. Call Sherry Hayes at 640-1200.



MT. ALBERT - \$129,900.

Excellent starter home, large kitchen and living room with hardwood floors, stone fireplace, skylight, just over 1/3 acre. All this and more on Town services. Call Sherry Hayes at 640-1200.



47 1/2 ACRES OF ROLLING LAND WITH POND

Uxbridge - 1 mile north of Claremont. Suitable for horses or cattle with storage barn. Brick bungalow, 3+ bedrooms, family room with bar and rec room. Call John Hurlbut or Shirley Hurlbut at 640-1200, 473-1100 or Res: 852-5242.



LARGE LOT

Cozy 2+ bedroom home, excellent starter or retirement home, close to town, neat as a pin and ready to move in. Only \$119,900. To view call Alan Elson or Earl Elson at 640-1200.

10 ACRES

Excellent investment or a place to build your own castle, featuring a local Toronto phone area, great for commuting, rolling topography. Only \$179,900. Call Earl Elson or Alan Elson at 640-1200.

EXCLUSIVE HARDWOOD LOT

Gorgeous 8.5 acre parcel minutes from town of Stouffville, easy access to 404, ready to build, only awaiting your plans and expertise. To view call Alan Elson or Earl Elson at 640-1200.

STOUFFVILLE

North-West corner Hwy 48 & 47 640-1200

Mt. Albert 473-1100

MARKHAM-UNIONVILLE

3882 Hwy 7 East, Just east of Warden Unionville 474-1212

PRIVATELY OWNED REAL ESTATE COMPANY